



## Emagic Technology Co., LTD.

Address: RM206, No 1, No 146, Guanlan Avenue, Xinhe Community, Fucheng street,  
Longhua district, Shenzhen, China TEL: 0755-27215455

Email: info@emagictek.com

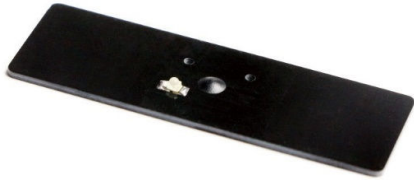
W: www.emagictek.com

whatsapp: +86131 6479 0119

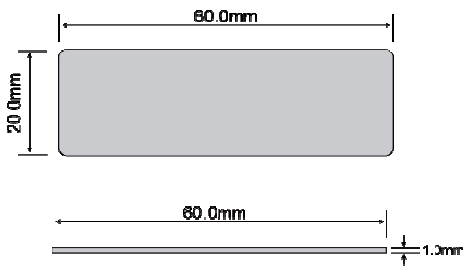
### EM-T46 SPECS--- UHF RFID Tag with Light

Physical Characteristics	
Dimensions	60x20mm; thickness: 1.0mm (Off-metal) or 3.0mm (On-metal)
Weight	About 2.5g/ 7.5g
Material	PCB
Colour	Black
Mounting Methods	Adhesive
Communication	
RFID	RFID
Barcoding	
Not support	
RFID	
Frequency	US(902-928MHZ), EU(865-868MHZ)
Protocol	ISO18000-6C (EPC global UHF Class 1 Gen 2 )
IC type	XBL2005-KX
Memory	EPC 128bits USER 1312 bits, TID 96bits
Write Cycles	1 time
Functionality	Read/write
Data Retention	50 Years
Applicable Surface	Non-metallic surface/ Metal Surfaces
Read range(Fix Reader): (Model: T26L, off metal)	Up to 11.0m,US(902-928MHZ), Off Metal Up to 11.0m,EU(865-868MHZ), Off Metal
Read range(Fix Reader): (Model: T26LM, on metal)	Up to 7.0m,US(902-928MHZ), On Metal Up to 5.6m,EU(865-868MHZ), On Metal
Read range(Handheld Reader): (Model: T26L, off metal)	Up to 5.0m,US(902-928MHZ), Off Metal; light-on read range up to 3.0m,Non-metallic surface. Up to 5.0m,EU(865-868MHZ), Off Metal
Read range(Handheld Reader): (Model: T26LM, on metal)	Up to 4.0m, US(902-928MHZ),On Metal; light-on read range up to 3.0m,Metallic surface. Up to 3.0m, EU(865-868MHZ),On Metal
Other functions	
Not applicable	
Developing environment	
SDK	-
User Environment	
IP Rating	IP67

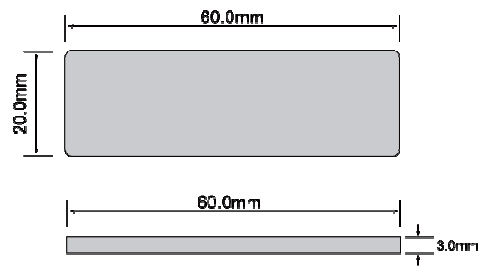
Operating Temp.	-20°C to +80°C
Storage Temp.	-20°C to +80°C
Humidity	5% RH - 95% RH non condensing
<b>Accessories</b>	
Not applicable	



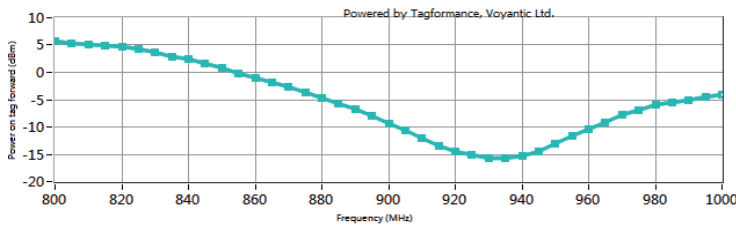
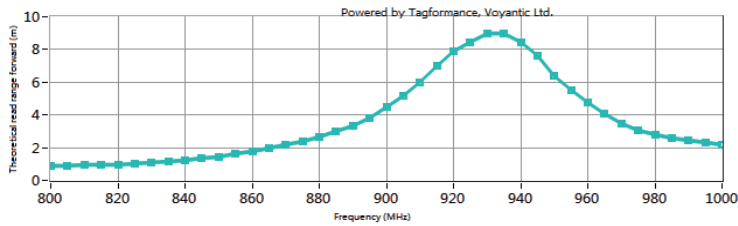
EM-T26L (Off-metal)



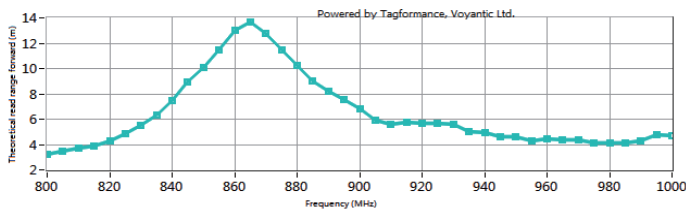
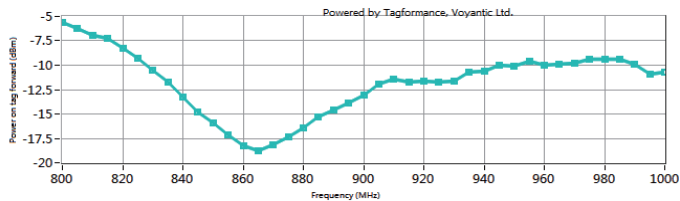
EM-T26LM (On-metal)



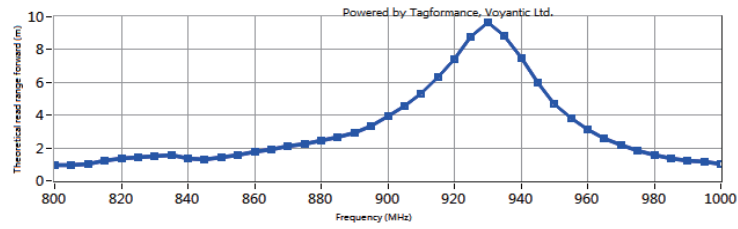
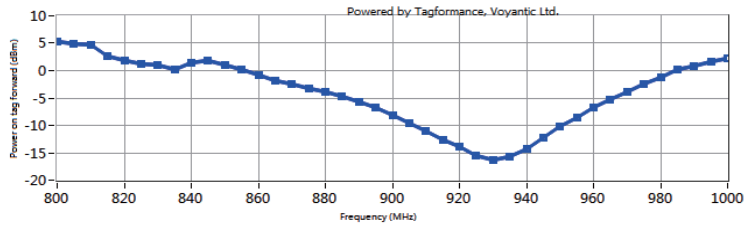
**U1 (US) 902-928MHz, EM-T26L:**



**E1 (EU) 865-868MHz, EM-T26L:**



**U1 (US) 902-928MHz, EM-T26LM:**



**E1(EU) 865-868MHz, EM-T26L:**

