



## Emagic Technology Co., LTD.

Address: RM206, No 1, No 146, Guanlan Avenue, Xinhe Community, Fucheng street,  
Longhua district, Shenzhen, China TEL: 0755-27215455

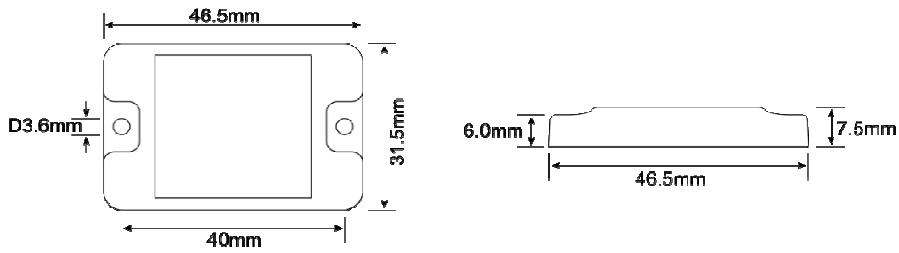
Email: info@emagictek.com

W: www.emagictek.com

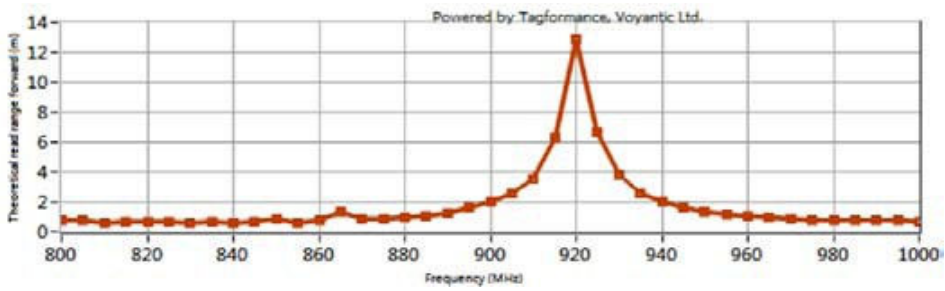
whatsapp: +86131 6479 0119

### EM-T45 SPECS---Embeded in Concrete UHF RFID Tag

Physical Characteristics	
Dimensions	46.5x31.5mm, Hole: D3.6mmx2; thickness: 7.5mm
Weight	About 22g
Material	PPS
Colour	Black
Mounting Methods	Embedded in concrete
Communication	
RFID	RFID
Barcoding	
Not support	
RFID	
Frequency	US(902-928MHZ), EU(865-868MHZ)
Protocol	ISO18000-6C (EPC global UHF Class 1 Gen 2 )
IC type	Alien Higgs-3 (Monza M4QT, Monza R6, UCODE 7XM+ or other chips are customizable)
Memory	EPC 96bits (Up to 480bits), USER 512bits, TID 64bits
Write Cycles	100,000 times
Functionality	Read/write
Data Retention	50 Years
Applicable Surface	Metal Surfaces
Reading range when embedded 5cm depth in concrete: (Handheld Reader)	2.2m, US(902-928MHZ) 2.1m, EU(865-868MHZ)
Reading range when embedded 10cm depth in concrete: (Handheld Reader):	2.0m, US(902-928MHZ) 1.9m, EU(865-868MHZ)
Other functions	
Not applicable	
Developing environment	
SDK	-
User Environment	
IP Rating	IP68
Operating Temp.	-25°C to +100°C
Storage Temp.	-40°C to +150°C
Humidity	5% RH - 95% RH non condensing
Accessories	
Not applicable	



**U1 (US) 902-928MHz, metal surface:**



**E1(EU) 865-868MHz, metal surface:**

