



## Emagic Technology Co., LTD.

Address: RM206, No 1, No 146, Guanlan Avenue, Xinhe Community, Fucheng street,  
Longhua district, Shenzhen, China TEL: 0755-27215455

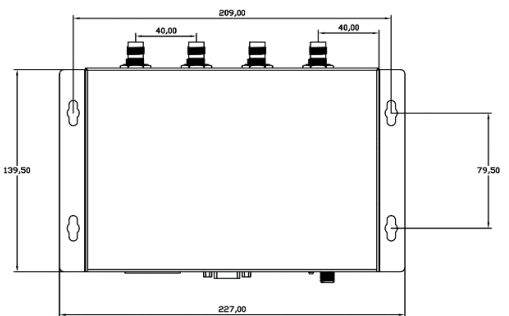
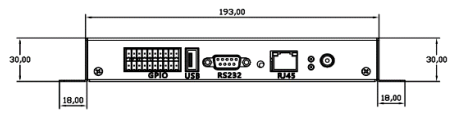
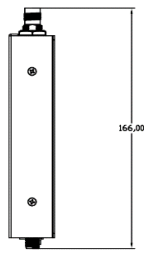
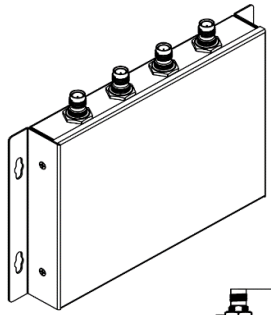
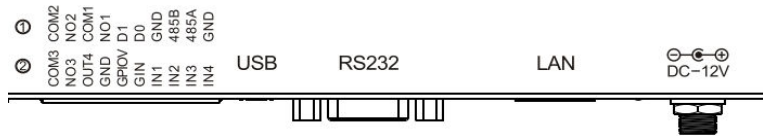
Email: info@emagictek.com

W: www.emagictek.com

whatsapp: +86131 6479 0119

### RF1471 SPECS--- 4 ports UHF RFID Reader

Physical Characteristics	
Dimensions	209*139.5*30mm
Weight	TBC
Interfaces	10/100 Base-T Ethernet interface, 232/485 serial port optional, wiegand, GPIO
Antenna ports	4 TNC reverse ports
Indicator	power light, working condition light
Power supply	DC 9-15V
Communication	
Communication way	T Ethernet, RFID; optional: RS232 (485)
Barcoding	
Not support	
RFID	
RFID chip	E710 IMPINJ
Frequency	865-868 MHz / 920-925 MHz / 902-928 MHz (customizable)
Protocol	ISO18000-6C (EPC global UHF Class 1 Gen 2 )
Read range	≥10meters (8dbi antenna)
Read Speed	≥400tags/s
Power consumption	Standby: 2.5W; Working: 15W (Max)
Tag cache	1000tags
Output power	5-33 dBm (+/-1.0dBm adjustable)
Other functions	
Not Applicable	
Developing environment	
SDK	support
User Environment	
Operating Temp.	-20°C +60 °C
Storage Temp.	-20 °C~+70 °C
Humidity	5% RH - 95% RH non condensing
Accessories	
Optional	Adapter



## Applications



Parking lot Management



Automotive and Transportation



Personnel management



Logistic Management



Product Line Management



Library Book Management