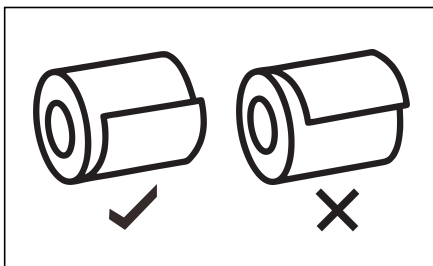


Thermal Receipt Printer

User Manual

Remove the used roll paper core if any, and insert the roll paper. The correct direction of the paper is shown in the illustration below.



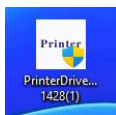
Self-Test Page:

Turn off the power first. Keep press the "Feed" button don't loose and in the meantime turn on the power. The test page will print automatically and then can loose the "Feed" button. If need to print normal paper, please restart the printer and then can in normal working status.

Driver Installation on Windows by USB Connection

1.Connect with Windows via USB interface, turn on the power of printer.

2.Double click the "PrinterDriver".



3.Choose the "Install" and click the "Next".



☒ Install printer driver

☐ Remove printer driver



4.Choose the "USB" and click the "Next".



Designated port

☒ USB

☐ Network

☐ Bluetooth

☐ Parallel

☐ Serial

☐ Customization



5. Click the "Next".

Printer Driver Wizard V1.0.10

Select USB printer

	USB port	PID-VID
<input checked="" type="checkbox"/>	USB003	VID_0416 PID_5011

USB test

Back Next Cancel

6. Choose the "POS-80" and click the "Next".

Printer Driver Wizard V1.0.10

Designated printer

	Model	Port	Status	Installation status
<input type="checkbox"/>	POS-58			
<input checked="" type="checkbox"/>	POS-80			

Back Next Cancel

7. Click the "Next".

Printer Driver Wizard V1.0.10

Designated printer name

Enter the name of the printer

Printer name: POS-80 (1)

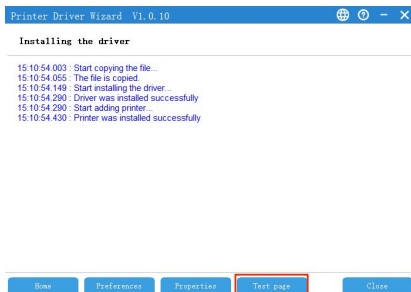
☒ Use this printer as the default printer

Back Next Cancel

8. Click the "Next".

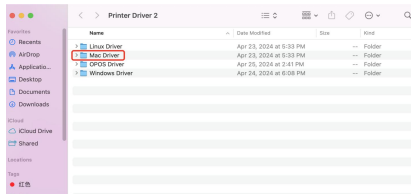


9. Install successfully and then can print test page.

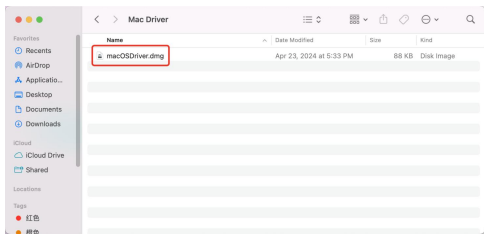


Driver Installation on Mac by USB Connection

1. Connect with Mac via USB interface, turn on the power of printer.
2. Double click the driver file.



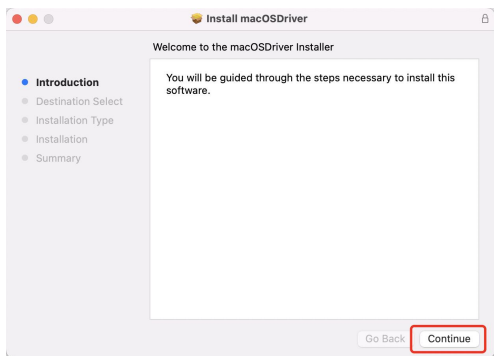
3.Double click the "macOSDriver.dmg".



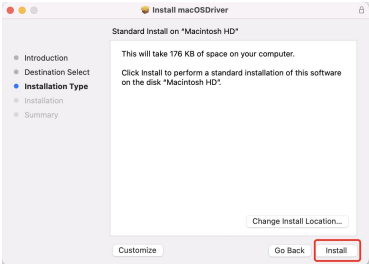
4.Double click the "macOSDriver_singed.pkg".



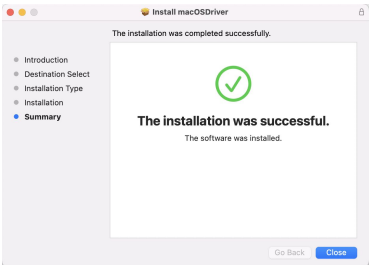
5.Double click the "Continue".



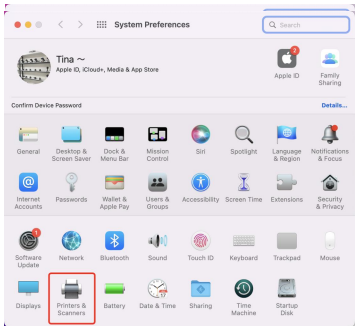
6.Double click the "Install" and type the password(your own mac password)



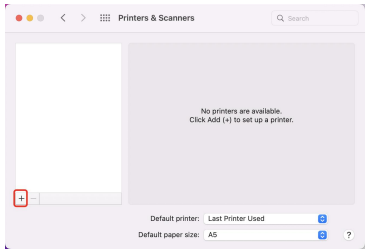
7.Click the "Close".



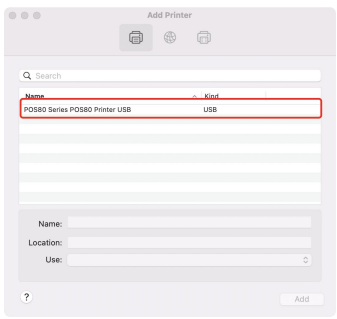
8.Choose the "System Preferences", and click the "Printers and Scanners".



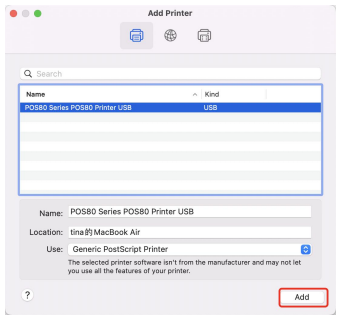
9.Click the "+".



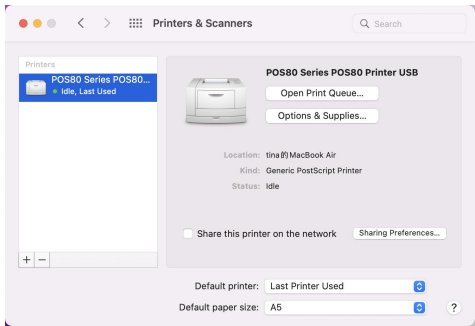
10.Click the "POS80 printer USB" and wait a few seconds, it will appear datas.



11.Click the "Add" and wait a few seconds, it will configure automacally.



12.Installation Successful.

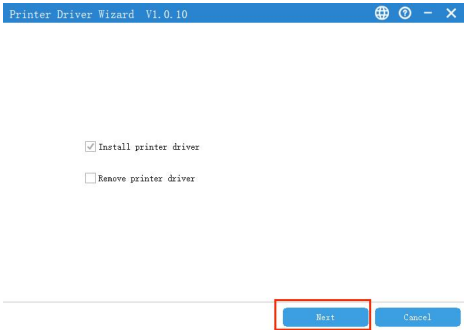


Driver Installation on Windows by LAN Connection

- 1.Connect with Windows via LAN interface, turn on the power of printer.
- 2.Double click the "PrinterDriver".



- 3.Choose the "Install" and click the "Next".



4. Choose the "Network" and click the "Next".

Printer Driver Wizard V1.0.10

Designated port

☐ USB

☒ Network

☐ Bluetooth

☐ Parallel

☐ Serial

☐ Customization

Back Next Cancel

5. Choose the "POS-80" and click the "Next".

Printer Driver Wizard V1.0.10

Designated printer

	Model	Port	Status	Installation status
<input type="checkbox"/>	POS-58			
<input checked="" type="checkbox"/>	POS-80			

Back Next Cancel

6. Click the "Next".

Printer Driver Wizard V1.0.10

Enter the IP address and the IP port name

IP address: 192.168.1.100

Port name: 192.168.1.100_3

Back Next Cancel

7. Click the "Next".

Printer Driver Wizard V1.0.10

Designated printer name

Enter the name of the printer

Printer name: POS-80 (1)

☒ Use this printer as the default printer

Back Next Cancel

8. Click the "Next".

Printer Driver Wizard V1.0.10

Prepare to install driver

Driver name: POS-80 11.3.0.1

Port name: 192.168.1.100_3

Printer name: POS-80 (3)

Set as default printer or not: Yes

Back Next Cancel

9. Install successfully and then can print test page.

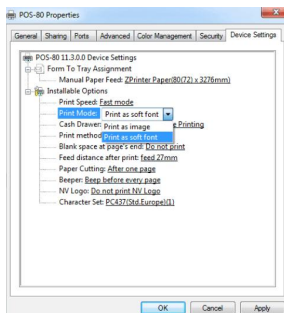
Printer Driver Wizard V1.0.10

Installing the driver

15:10:54.003 : Start copying the file...
15:10:54.055 : The file is copied.
15:10:54.149 : Start installing the driver...
15:10:54.290 : Driver was installed successfully
15:10:54.290 : Start adding printer...
15:10:54.430 : Printer was installed successfully

Home Preferences Properties Test page Close

10. We can also change the setting by "Device Setting" (print method setting, cash drawer setting, paper cutter setting etc)-As below image shown:

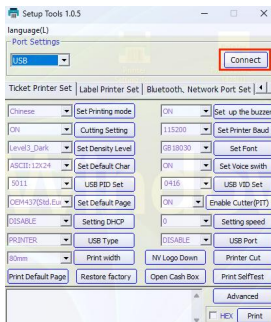


Driver Installation on Windows by Wifi Connection

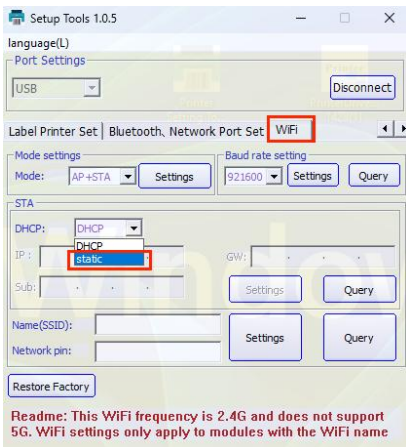
1. Connect with Windows via USB interface, turn on the power of printer and enable the Wifi on PC.
2. Double Click the tool "Printer Setting Tools".



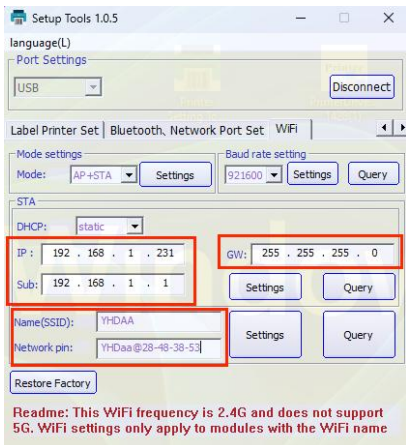
3. Click the "Connect".



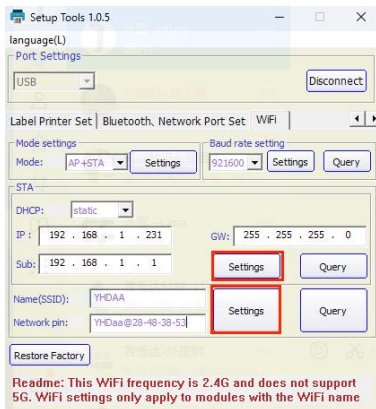
4. Click the "Wifi" and choose the "static".



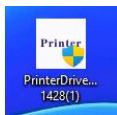
5. Set the IP address and link your own local wifi.



6.Click the "setting".



7.Double click the "PrinterDriver".



8.Choose the "Install" and click the "Next".



9. Choose the "Network" and click the "Next".

Printer Driver Wizard V1.0.10

Designated port

☐ USB

☒ Network

☐ Bluetooth

☐ Parallel

☐ Serial

☐ Customization

Back Next Cancel

10. Choose the "POS-80" and click the "Next".

Printer Driver Wizard V1.0.10

Designated printer

	Model	Port	Status	Installation status
<input type="checkbox"/>	POS-58			
<input checked="" type="checkbox"/>	POS-80			

Back Next Cancel

11. Type the IP address we set and click the "Next".

Printer Driver Wizard V1.0.10

Enter the IP address and the IP port name

IP address: 192.168.1.231

Port name: 192.168.1.231

Back Next Cancel

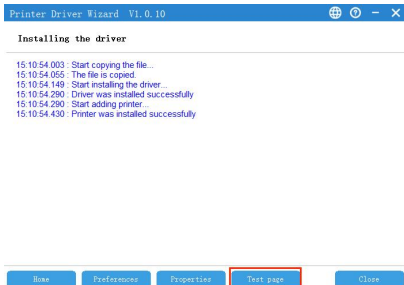
12. Click the "Next".



13. Click the "Next".

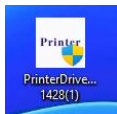


14. Install successfully and then can print test page.

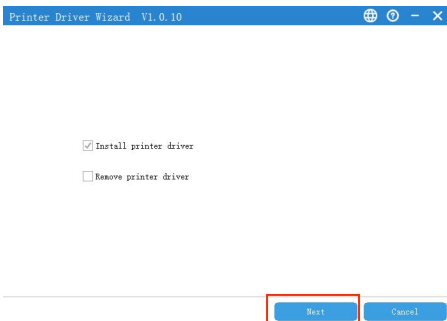


Driver Installation on Windows by Bluetooth Connection

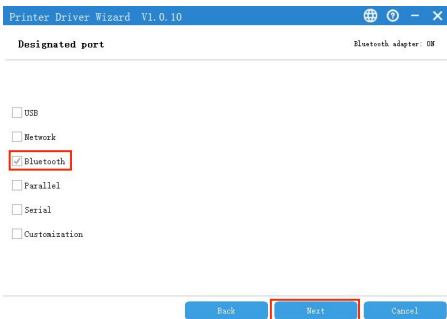
1. Turn on the power of printer, enable the bluetooth function on PC.
2. Double click the "PrinterDriver".



3. Choose the "Install" and click the "Next".



4. Choose the "Bluetooth" and click the "Next".



5. Choose the "POS-8380" and click the "Next".

Printer Driver Wizard V1.0.10

Select Bluetooth printer

	Name	Bluetooth Address
<input type="checkbox"/>	YIN-5838L	DC-0B-51-A7-CE-4A
<input checked="" type="checkbox"/>	POS-8380 Paired	66-32-AE-C5-96-04

Bluetooth pairing code:

1234

Back Next Cancel

6. Choose the "POS-80" and click the "Next".

Printer Driver Wizard V1.0.10

Designated printer

	Model	Port	Status	Installation status
<input type="checkbox"/>	POS-58			
<input checked="" type="checkbox"/>	POS-80			

Back Next Cancel

7. Click the "Next".

Printer Driver Wizard V1.0.10

Designated printer name

Enter the name of the printer

Printer name: POS-80 (1)

☒ Use this printer as the default printer

Back Next Cancel

8. Click the "Next".



9. Install successfully and then can print test page.

