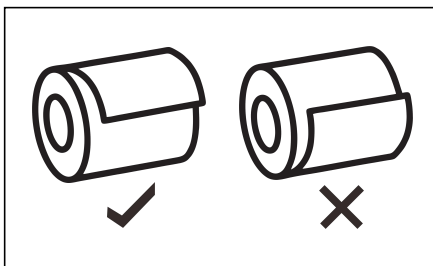


Thermal Label Printer

User Manual

Remove the used roll paper core if any, and insert the roll paper. The correct direction of the paper is shown in the illustration below.




Self-Test Page:

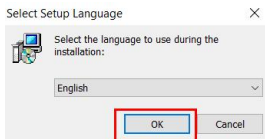
Turn off the power first. Keep press the "Feed" button don't loose and in the meantime turn on the power. The test page will print automatically and then can loose the "Feed" button. If need to print normal paper, please restart the printer and then can in normal working status.

Driver Installation for Windows by USB Connection

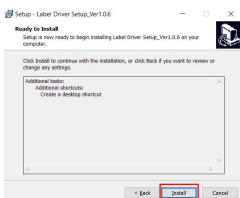
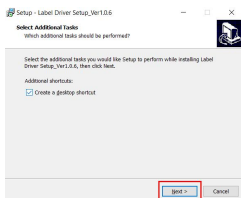
- 1.Connect with Windows via USB interface, turn on the power of printer.
- 2.Double click the "LabelPrinter_V1.0.6".

Name	Date modified	Type	Size
 LabelPrinter_V1.0.6	1/2/2024 1:46 PM	Application	2,388 KB

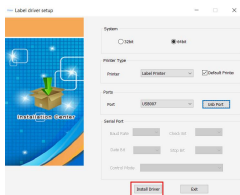
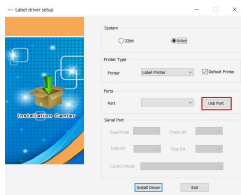
- 3.Choose the language to English and click the "OK".



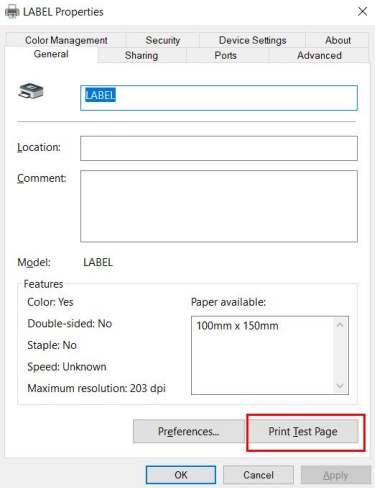
- 4.Click the "Next ".
- 5.Choose the and click the "Install".



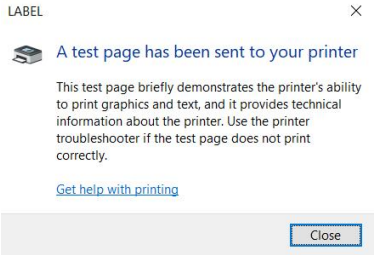
- 6.Click the "Usb Port" and then it will show the information.
- 7.Click the "Install Driver".



8.Install successful, click the "Print Test Page".

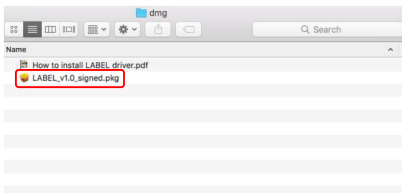


9.Printer will print test page then can check the information.

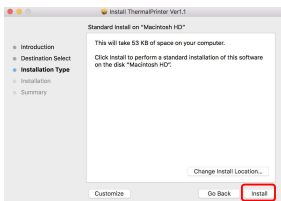
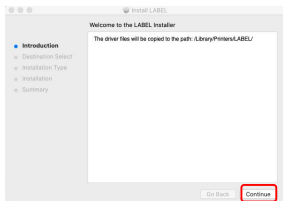


Driver Installation for Mac by USB Connection

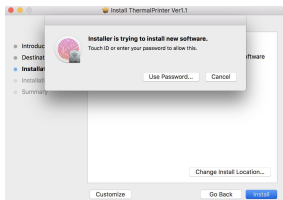
1. Double click the LABEL .dmg.
2. Double click "LABEL_V1.0_signed.pkg" to install the driver.



3. Click "Continue" button.
4. Click "Install".

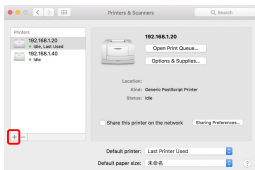
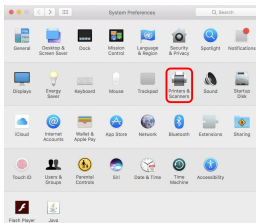


5. Use Touch ID or Enter your password.
6. Click "Close" to finish.



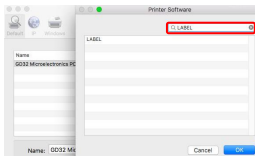
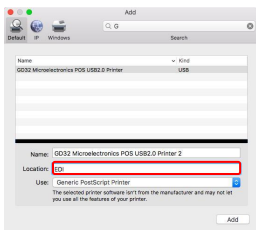
7.Open "System Preferences", and click "Printers and Scanners".

8.Click "+" to add a new printer.



9.Turn on your printer, and choose "LABEL", select "Select Software" under "Use" drop down menu.

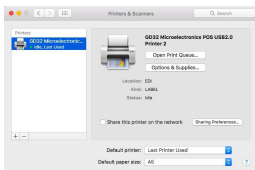
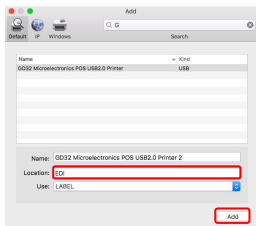
10.Input "LABEL", and choose "LABEL".



11.Click "Add".

12.Use Touch ID or enter your password.

13.Finish.

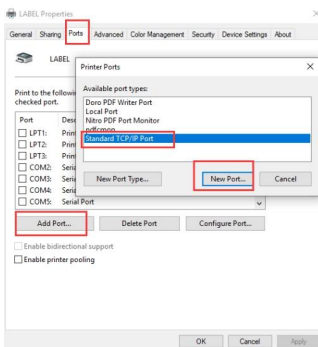


LAN Port Driver Installation

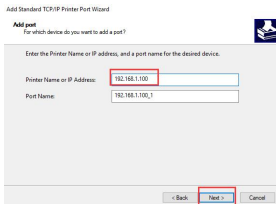
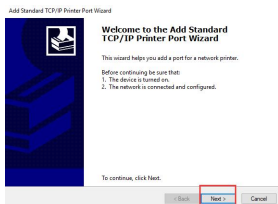
Get the local IP address from Self-test page.

The method of printing Self-test page: Hold down the FEED button in the shutdown state, and then press and hold the POWER button to power on, when you see the "ERROR" Red right is ON, then release the FEED button. You can get the IP address from the self-test page(Default IP address:192.168.1.100)

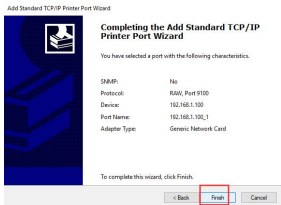
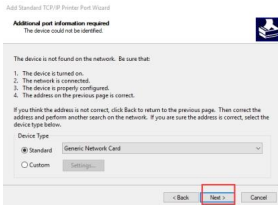
1.Open the printer properties interface and select"port",as shown in the figure below: Select "Add Port", as shown below:



2.Select"Next",show as below:

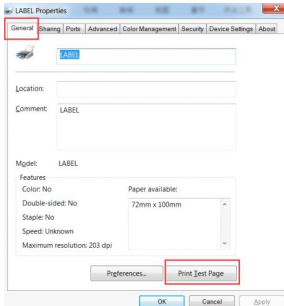
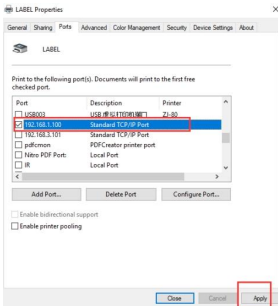


3. Select Standard "Generic Network Card" and Next:



4. After "Finish", and then click "Apply":

5. You can click the "Print Test Page" to have a test:



If the printer prints a normal page, that means the LAN port can be used normally.

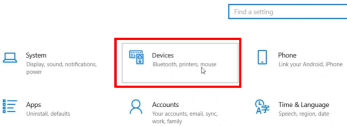
Note: if you need to modify the printer IP, you can refer to "CD"- "tools"- "Printer setting tools" file inside the IP setting method to set up; If it is a WIFI interface, you can refer to "CD"- "tools"- "WIFI setting tools" for relevant Settings.

Driver Installation for Windows by Bluetooth Connection

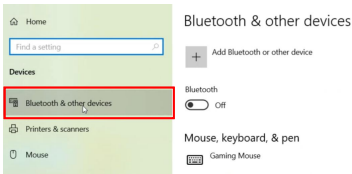
- 1.Turn on the power of printer.
- 2.Click the Windows and then click the setting.



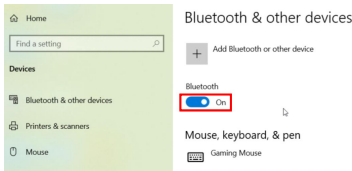
- 3.Click the "Devices"



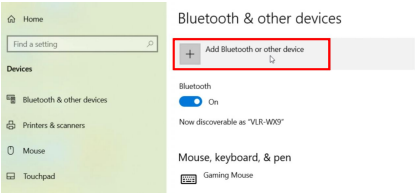
- 4.Click the "Bluetooth and other devices"



- 5.Turn on the Bluetooth.

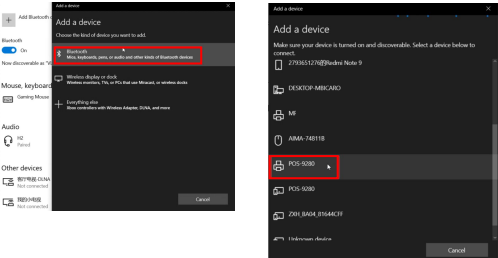


6.Click the "+"



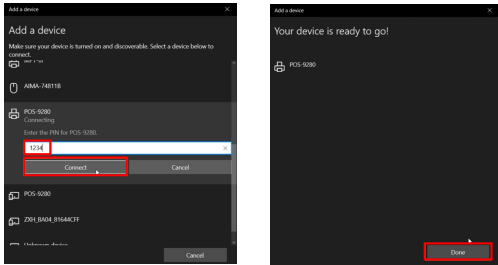
7.Click the bluetooth.

8.Choose the "POS-9280", please mind need to choose the correct printer symbol.



9.Type the pin code "1234" and then click Connect.

10.Bluetooth connect Successful.



11.Click the "more bluetooth options".

Bluetooth & other devices

+ Add Bluetooth or other device

Bluetooth

On

Now discoverable as "VLR-WX9"

Mouse, keyboard, & pen

Gaming Mouse

Related settings
Devices and printers

Sound settings

Display settings

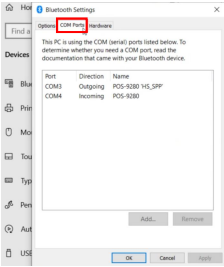
More Bluetooth options

Send or receive files via Bluetooth

Get help

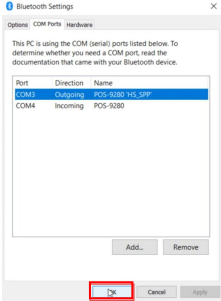
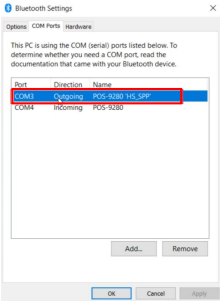
Give feedback

12.Click the "COM ports".



13.Check which one is outgoing port, for example now is COM3, we need to use this port later, just remember this port.

14.Click the "OK".



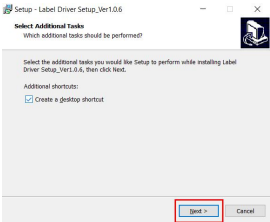
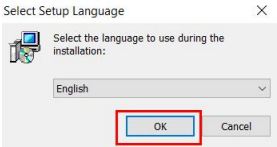
15. Bluetooth connection done, now install driver via bluetooth.
16. Double click the driver file.

MACOS	4/23/2024 5:33 PM	File folder
WINDOWS	4/25/2024 2:43 PM	File folder

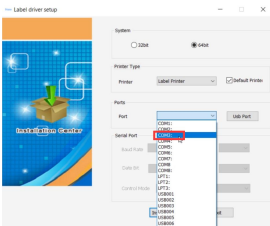
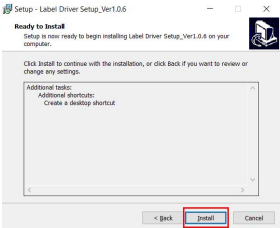
17. Double click the "LabelPrinter_V1.0.6".

Name	Date modified	Type	Size
LabelPrinter_V1.0.6	1/2/2024 1:46 PM	Application	2,388 KB

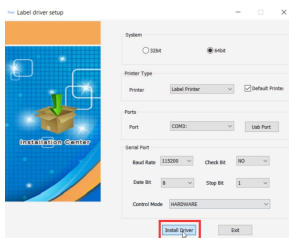
18. Choose the language to English and click the "OK".
19. Click the "Next".



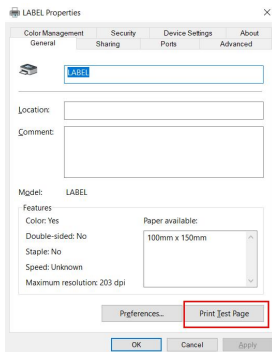
20. Choose the and click the "Install".
21. Choose the port (the bluetooth outgoing port, for example COM3, step 13 shown)



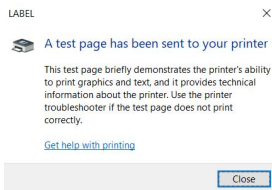
22. Click the "Install Driver".



23. Install successful, click the "Print Test Page".

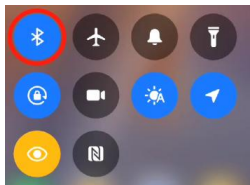


24. Printer will print test page then can check the information.

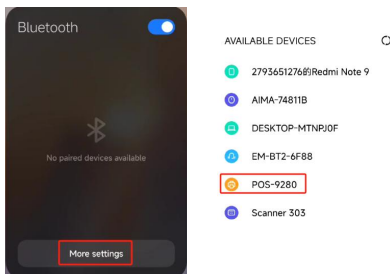


Label Editing Software with Android System via Bluetooth Connection

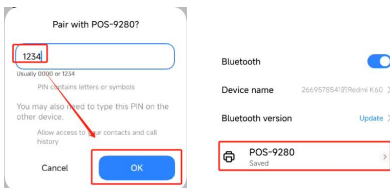
1. Turn on the power of printer.
2. Turn on the bluetooth.



3. Click the "More Setting".
4. Click the "POS-9280".



5. Type the pin code "1234" and then click the "OK".
6. Pair Successful.



7.Open the label editing software App, please scan below QR code to download the APP.



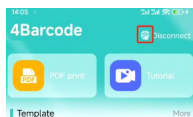
4Barcode

Android editing software
Install Password:1234

8.Click the printer symbol.

9.Choose the "Bluetooth Connection".

10.Choose the "POS-9280".



11.Connection Successful.

Connected successfully

Label Editing Software with IOS System via Bluetooth Connection

1.Turn on the power of printer.

2.Turn on the bluetooth.



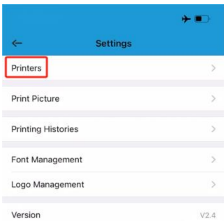
3.Open the label editing software App, please scan below QR code to download the APP.



Zlabel

IOS editing software
Install Password:1234

- 4.Click the setting symbol.
- 5.Choose the "Printers".



- 6.Choose the POS-9280.
- 7.Bluetooth connect successful.

