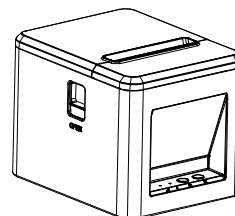


Thermal Receipt Printer User Manual



Warning :

No part of this manual can be changed without agreement. The company reverses the rights to modify the technology, components, software and hardware. You may ask the distributors for more product information. No part of chapter in this manual can be copied or transmitted in any format without permission.

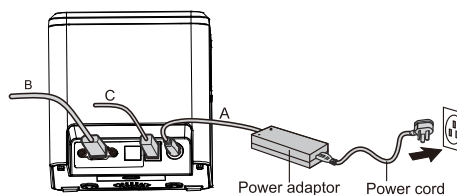


Note: The model pictures and interfaces shown in the manual are for reference only, please refer to the actual product.

Please keep use manual for reference

What is in the box:

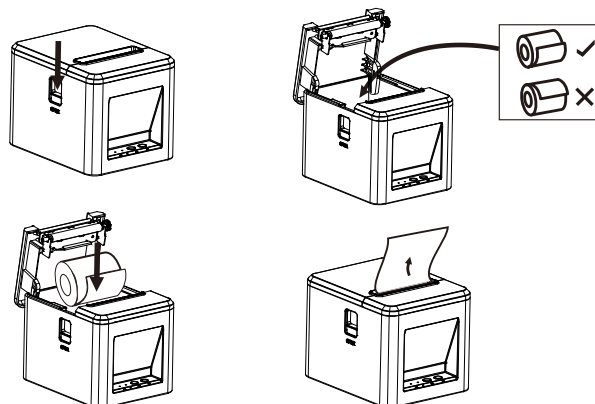
- | | |
|---|----|
| (1). 80mm Thermal Receipt Printer | ×1 |
| (2). AC adapter (with one AC cable power cord) | ×1 |
| (3). Data Cable except for Ethernet port | ×1 |
| (4). User's Manual | ×1 |
| (5). 80mm roll Paper | ×1 |
| (6). Software Disc(optional) | ×1 |



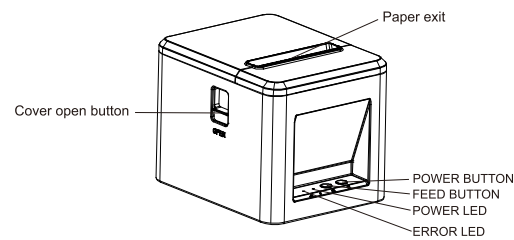
Paper roll installation

Follow the steps below to install the roll paper:

- (1). Open the roll paper cover.
- (2). Insert the roll paper as the following illustration shows.
- (3). Pull out a small roll of paper, and close the roll paper cover.
- (4). Tear up the spare roll paper.



Function overview



Button name, indicator LED light and function

- (1) **Power button** (⏻)
Press this button to turn on/turn off printer.
- (2) **FEED button** (↶)
Press this key to feed paper, if you keep pressing this key, it will feed paper continuously.
- (3) **Power indicator** (💡)
When this light is on, it means the printer is powered on, and when this light is off, it means the printer is powered off.
- (4) **Error indicator** (⚠️)
When the printer is out of paper, the error lights such as cutter error and print head overheating will flash.

Operating Condition	Flashing method	Describe
cover with paper	Error	ERROR light off
Closed cover out of paper	Error	ERROR light is always on
Out of paper when opening the cover	Error	ERROR light is always on
open cover with paper	Error	ERROR light is always on
Cutter abnormal	Error t1 t2	ERROR light flashes
print head overheating	Error t1 t2	ERROR light flashes faster

3

Cautions:

- (1) Be sure to install your printer on a stable surface and prevent it from vibration and impact.
- (2) Do not use and store in locations subject to high temperature, humidity or pollution levels.
- (3) Connect the power adapter into a properly grounded outlet. Do not share the same plug socket with large-scale electrical motor or other motors which may cause the power supply voltage fluctuations.
- (4) Avoid water or other conductive materials like metal get into the intern of printer. If it happens, unplug the AC power cord immediately.
- (5) Do not print without paper, or it will damage the rubber roller and thermal printhead.
- (6) Unplug your printer before leaving it unused for an extended period.
- (7) Never dissemble or modify the printer for repair or reconstruction.
- (8) Be sure to use the original specified power source.
- (9) Quality roll paper is recommended for premium printing and product maintenance.
- (10) Be sure to turn the product off when plugging and unplugging.
- (11) Place the plug socket around the product for convenience.
- (12) This product is used only below 5000 meters above sea level in tropical climate conditions

Clearance

Timely clean the printhead if one of the below conditions occurred:

- (1) Unclear printing.
- (2) Unclear vertical column in printing paper.
- (3) Noisy feeding.

Cleaning steps are as follows:

- (1) Turn off the printer and open the roll paper cover. Remove the roll paper if any.
- (2) After printing, the thermal head can be very hot. Wait to let it cool before cleaning.
- (3) Clean the thermal elements of the thermal head with a wrung -out cotton moistened with an alcohol solvent.
- (4) Wait till the ethanol completely volatilized to close cover. Then print self-test page.

5

Self Test

The self-test method is as follows: After the printer is connected, press and hold the power button and the paper feed button at the same time, when the ERROR light flashes once (about 3 seconds), release the power button and the paper feed button, and the printer will print the current status and printer settings.

Method to enter hexadecimal mode

After the printer is connected, press and hold the power button and the paper feed button at the same time, release the power button and the paper feed button for about 10 seconds, then you can enter the printer data hexadecimal dump mode, and the printer prints "Hexadecimal Dump" on the paper roll.

Reset

After the printer is connected, press and hold the power button and the paper feed button at the same time, the printer will make two beeps in about 20 seconds, and then the ERROR light flashes once. At this time, release the power button and the paper feed button, and the printer has been initialized.restore to factory settings, the printer prints out self-test information.

How to solve paper jam

- (1) **Method 1**
Re-start printer.
- (2) **Method 2**
Open the battery cover near paper exit. Turn the white gear on the cutter. Only the cutter back to initial position, can the cover be opened.
Caution: Do not damage the printhead and auto cutter by open the cover forcibly.

4



Notice:

- (1) Please make sure power off when maintaining printer.
- (2) Don't touch or scratch printing head surface, roller and sensors.
- (3) Avoid gas, acetone or other organic solvent.
- (4) Wait till alcohol completely volatilized, close top cover and connect power again.
Try print self test to make sure it works properly.

