

Thermal Printer

User Manual

About the button using:

- ◆ Long press the button about two seconds and hear the first "Beeps" can turn on or turn off the power.
- ◆ In power on status, quick press the button for three time can switch the working mode(label/receipt).
- ◆ In power on status, keep press the button till we hear the third "Beeps" it can print self-test page.
- ◆ In power on status and in the label working mode, keep press the button till we hear the second "Beeps" it can test the paper gap.

Please scan QR code to download CD Files

Download Link:

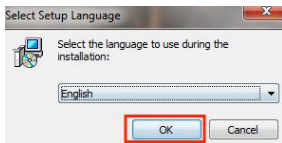
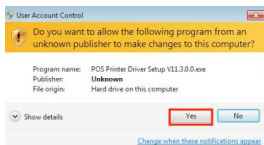
<http://www.barcoderead.net/printer/58F.zip>



Label Driver Installation for Windows by USB Connection

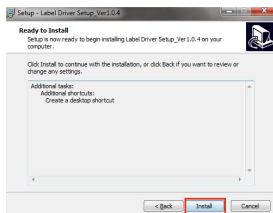
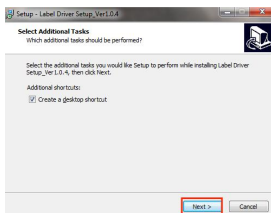
Note: Please make sure the printer is turn on, and the paper is in right direction before this step.

1.Insert the CD driver, and find the driver in the menu (58 printer driver software), then click it to start the installation, you will see the pictures as below which need to choose the language:



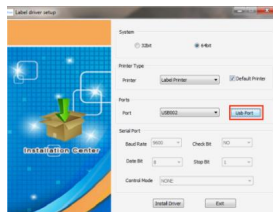
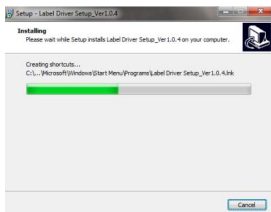
2.Choose the language you will use, and click" OK", you will see following picture. Click "Next".

3.You will see following picture, please click the "Install" to continue.



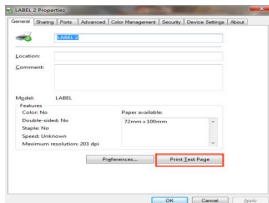
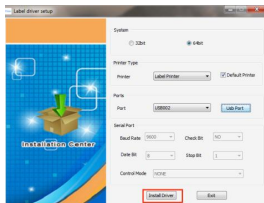
4.The driver installing, please do not operate it.

5.After the installation, you will see the following picture, please click the "Usb Port" and then it will detect the USB port automatically.

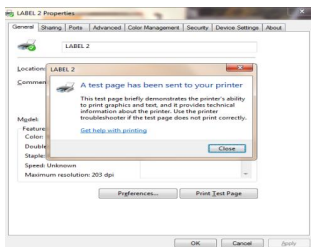


6.After it detected port, please click the "Install Driver".

7.When finish, please find the printer name "Label".



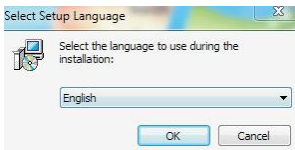
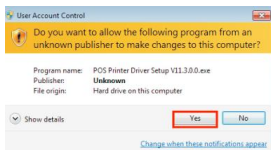
8.Click the print Test page, then the printer will print the test page, it means printer driver install successfully.



Receipt Driver Installation for Windows by USB Connection

Note: Please make sure the printer is turn on, and the paper is in right direction before this step.

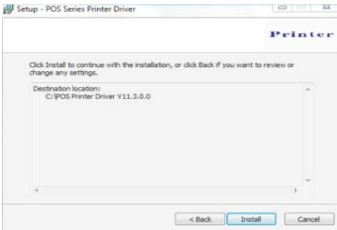
1.Insert the CD driver, and find the driver in the menu (58 printer driver software), then click it to start the installation, you will see the pictures as below which need to choose the language:



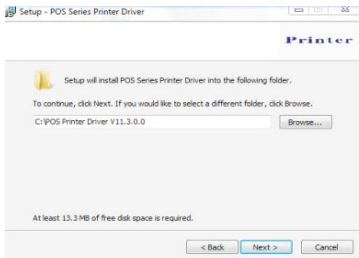
2.Choose the language you will use, and click" OK", you will see following picture. Click "Next".



3.Then you will find following picture, just click "I accept", then "Next".



4.You will see following picture, you can choose the default path, also can save the driver to anywhere you want.



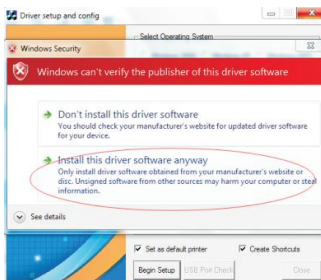
5. Click "Next", then you will find following picture, here choose "Install". If your PC have any anti virus software, please allow this install.



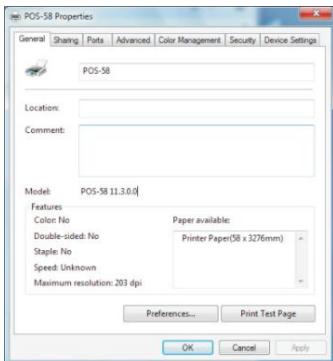
6. After the installation, you will see the following picture, choose the system of the PC you using and the the model of printer you using (POS 58Series Printer). Then click "USB Port Check". If the installation is successful , the printer will print some words to show the installation is OK.



7. Click "Begin Setup", You will see following picture, choose "Install", Then "install this driver anyway".



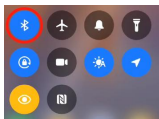
8. When finish, please find the printer driver "POS 58" in the control panel of your PC, then right click the "Printer Property", you will find the following picture.



Select your printer port that matches the "port" option, select the printer you want to feature in the "device settings". In conventional option "Print Test Page" to verify that OK. If the Test print is OK, then the printer can working now. If it shows: Error, Please click "Ports" again, choose: USB001, or USB002 , or USB003.

Label Editing Software with Android System via Bluetooth Connection

1. Turn on the power of printer.
2. Turn on the bluetooth, find the YHD-58F and type the pin "0000"



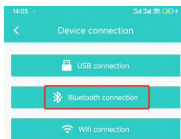
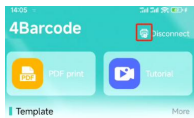
3. Open the label editing software App, please scan below QR code to download the APP.



4Barcode

Android editing software
Install Password:1234

4. Click the printer symbol.
5. Choose the "Bluetooth Connection".
6. Choose the "YHD-58F".



7. Connection Successful.

Connected successfully

Label Editing Software with IOS System via Bluetooth Connection

1.Turn on the power of printer.

2.Turn on the bluetooth.



3.Open the label editing software App, please scan below QR code to download the APP.

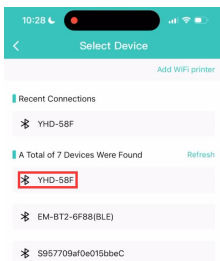
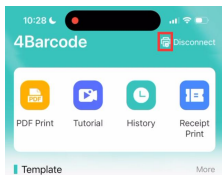


4BarCode

IOS editing software
Install Password:1234

4.Click the printer symbol.

5.Choose the "YHD-58F".



6.Bluetooth connect successful.

Bluetooth Connection Successful