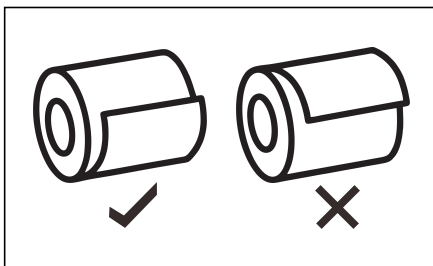


# **Thermal Receipt Printer**

## **User Manual**

Remove the used roll paper core if any, and insert the roll paper.  
The correct direction of the paper is shown in the illustration below.



### **Self-Test Page:**

Turn off the power first. Keep press the "Feed" button don't loose and in the meantime turn on the power. The test page will print automatically and then can loose the "Feed" button. If need to print normal paper, please restart the printer and then can in normal working status.

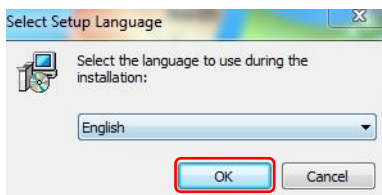
## Driver Installation for Windows by USB Connection

1.Connect with Windows via USB interface, turn on the power of printer.

2.Double click the "POS Printer Driver ".



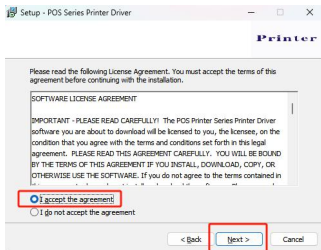
3.Choose the language to English and click the "OK".



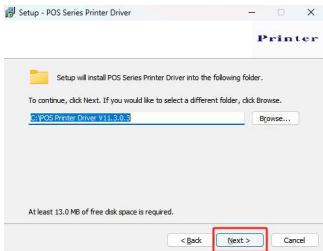
4.Click the "Next ".



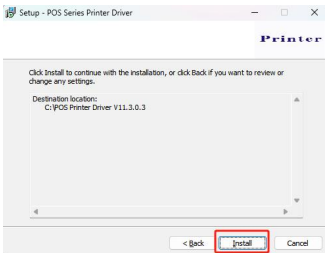
5. Choose the "Accept" and click the "Next".



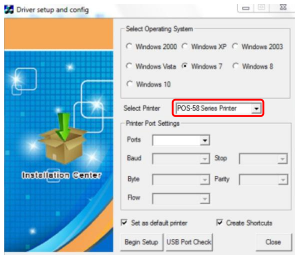
6. Click the "Next".



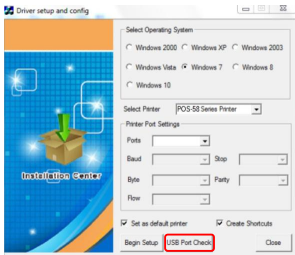
7. Click the "Install".



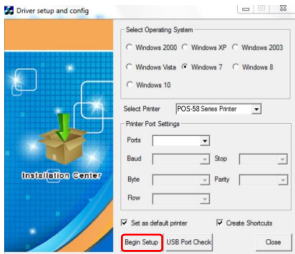
8.Choose the "POS-58 " .



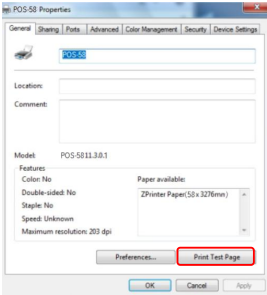
9.Click the "USB Port Check" and it will auto detect the interface you plug:



10.Click the "Begin Setup".

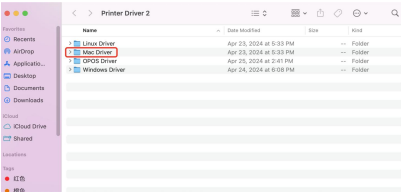


11.Installation Sucessful! You could print the test page now.

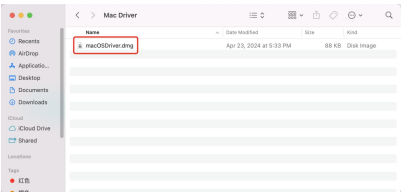


## Driver Installation for Mac by USB Connection

- 1.Connect with Mac via USB interface, turn on the power of printer.
- 2.Double click the driver file.



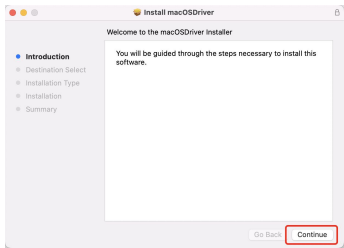
- 3.Double click the "macOSDriver.dmg".



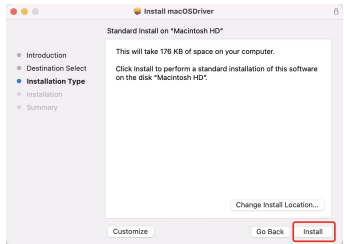
4.Double click the "macOSDriver\_singed.pkg".



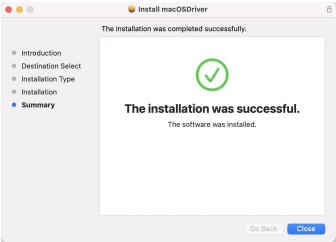
5.Double click the "Continue ".



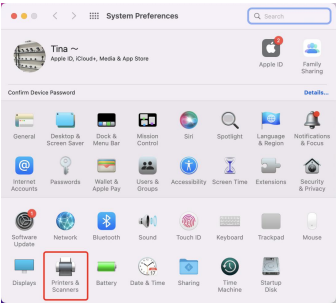
6.Double click the "Install "and type the password(your own mac password)



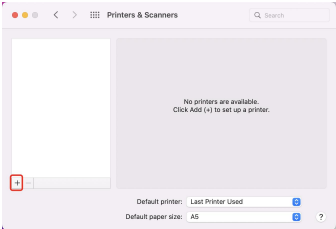
7.Click the "Close".



8.Choose the "System Preferences", and click the "Printers and Scanners".

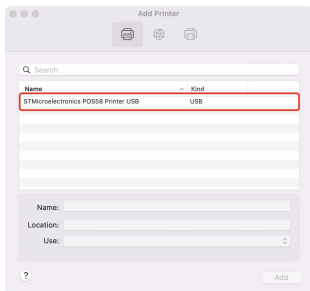


9.Click the "+".

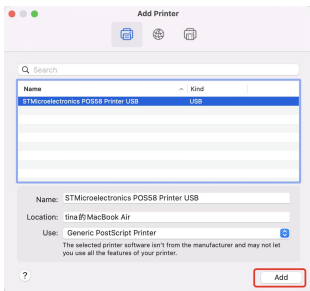




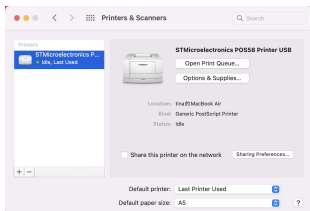
10. Click the "POS58 printer USB" and wait a few seconds, it will appear data.



11. Click the "Add" and wait a few seconds, it will configure automatically.



12. Installation Successful.

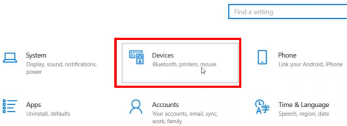


# Driver Installation for Windows by Bluetooth Connection

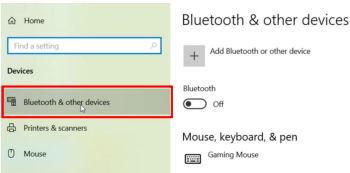
- 1.Turn on the power of printer.
- 2.Click the Windows and then click the setting.



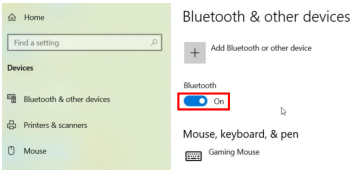
- 3.Click the "Devices"



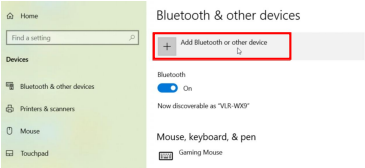
- 4.Click the "Bluetooth and other devices"



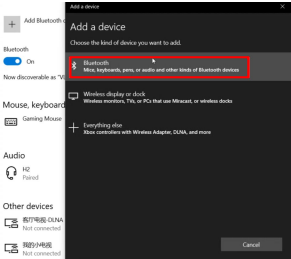
- 5.Turn on the Bluetooth.



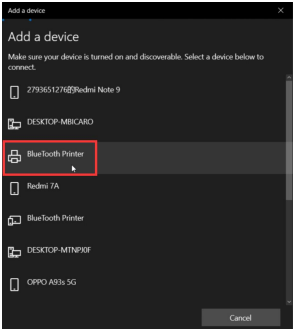
6.Click the "+"



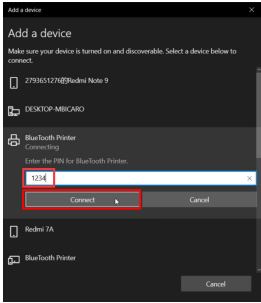
7.Click the bluetooth.



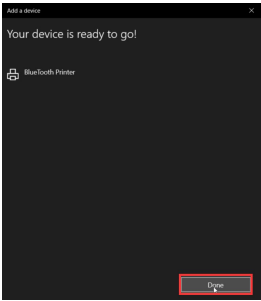
8.Choose the "BlueTooth Printer", please mind need to choose the correct printer symbol.



9.Type the pin code "1234" and then click Connect.



10.Bluetooth connect Successful.



11.Click the "more bluetooth options".

#### Bluetooth & other devices

+ Add Bluetooth or other device

Bluetooth  
On

Now discoverable as "VLR-W93"

Mouse, keyboard, & pen

Gaming Mouse

Related settings  
Devices and printers

Sound settings

Display settings

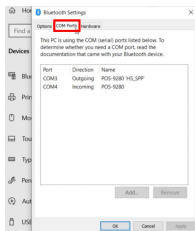
More Bluetooth options

Send or receive files via Bluetooth

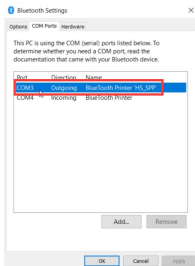
Get help

Give feedback

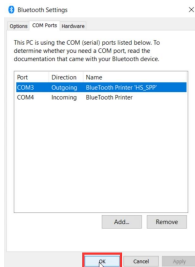
12.Click the "COM ports".



13.Check which one is outgoing port, for example now is COM3, we need to use this port later, just remember this port.



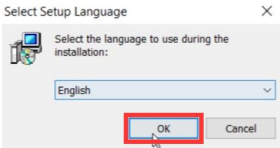
14.Click the "OK".



15. Bluetooth connection done, now install driver via bluetooth.
16. Double click the "POS Printer Driver".

Name	Date modified	Type
 POS Printer Driver V11.3.0.3	8/23/2023 4:19 PM	Application

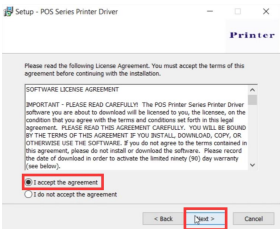
17. Choose the language to English and click the "OK".



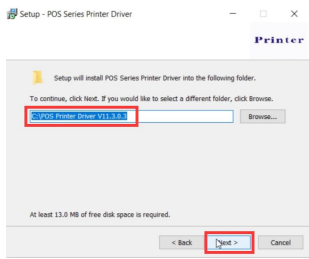
18. Click the "Next".



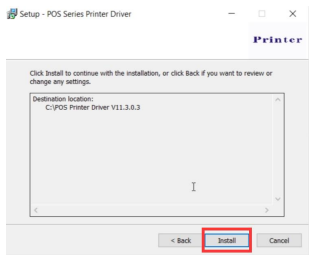
19. Choose the "Accept" and click the "Next".



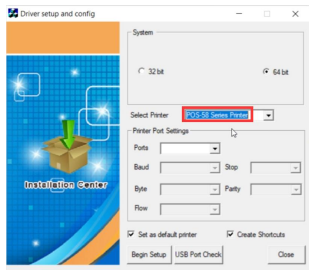
20.Click the "Next".



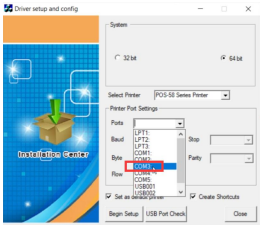
21.Click the "Install".



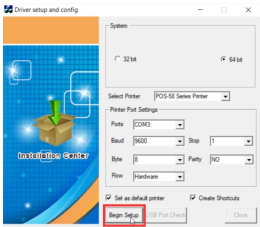
22.Choose the "POS-58".



23.Choose the port(the bluetooth outgoing port, for example COM3, step 13 shown)



24.Click the "Begin Setup".



25.Installation Sucessful! You could print the test page now.

