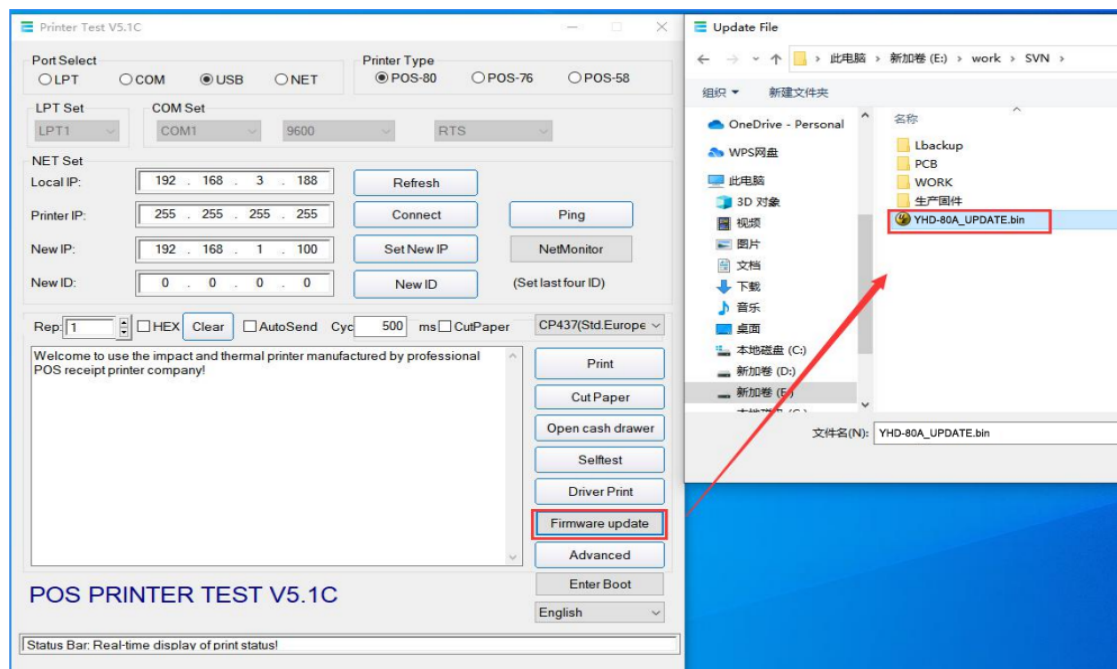


Update instructions

1. Open "Printer Test V5.1C" programs
2. If Label Printer Click "enter boot" into update mode, If not label printer, jump this step to step 3.

The screenshot shows the 'Printer Test V5.1C' application window. At the top, there are radio buttons for 'Port Select' (LPT, COM, **USB**, NET) and 'Printer Type' (POS-80, POS-76, POS-58). Below these are dropdown menus for 'LPT Set' (LPT1) and 'COM Set' (COM1, 9600, RTS). The 'NET Set' section includes input fields for 'Local IP' (192.168.3.188), 'Printer IP' (255.255.255.255), 'New IP' (192.168.1.100), and 'New ID' (0.0.0.0), along with buttons for 'Refresh', 'Connect', 'Ping', 'Set New IP', 'NetMonitor', and 'New ID'. A 'Rep:' field is set to 1, with checkboxes for 'HEX', 'Clear', 'AutoSend', and 'Cyc' (500 ms), and a 'CutPaper' checkbox. A large text area on the left contains a welcome message. On the right, a vertical stack of buttons includes 'Print', 'Cut Paper', 'Open cash drawer', 'Selftest', 'Driver Print', 'Firmware update', 'Advanced', **Enter Boot**, and 'English'. The title bar reads 'POS PRINTER TEST V5.1C' and the status bar at the bottom says 'Status Bar: Real-time display of print status!'.

3. Such as the following "Firmware update -> Update File"



4. Choose firmware that is upgraded by file, such as YHD-80A_Update.bin, upgrade. At this time, two LED flickers on the printer at the same time, do not turn off printer power.

Upgrade Success.