

# ESDFLOR

---

Static Control Vinyl Floor Covering

## Homogeneous ESD Vinyl Tile

导静电地板

导静电卷材地板

静电耗散型地砖

PVC STATIC DISSIPATIVE FLOOR TILE

PVC STATIC ELECTRICITY CONDUCTIVE TILE

Waterproof

Flame retardant

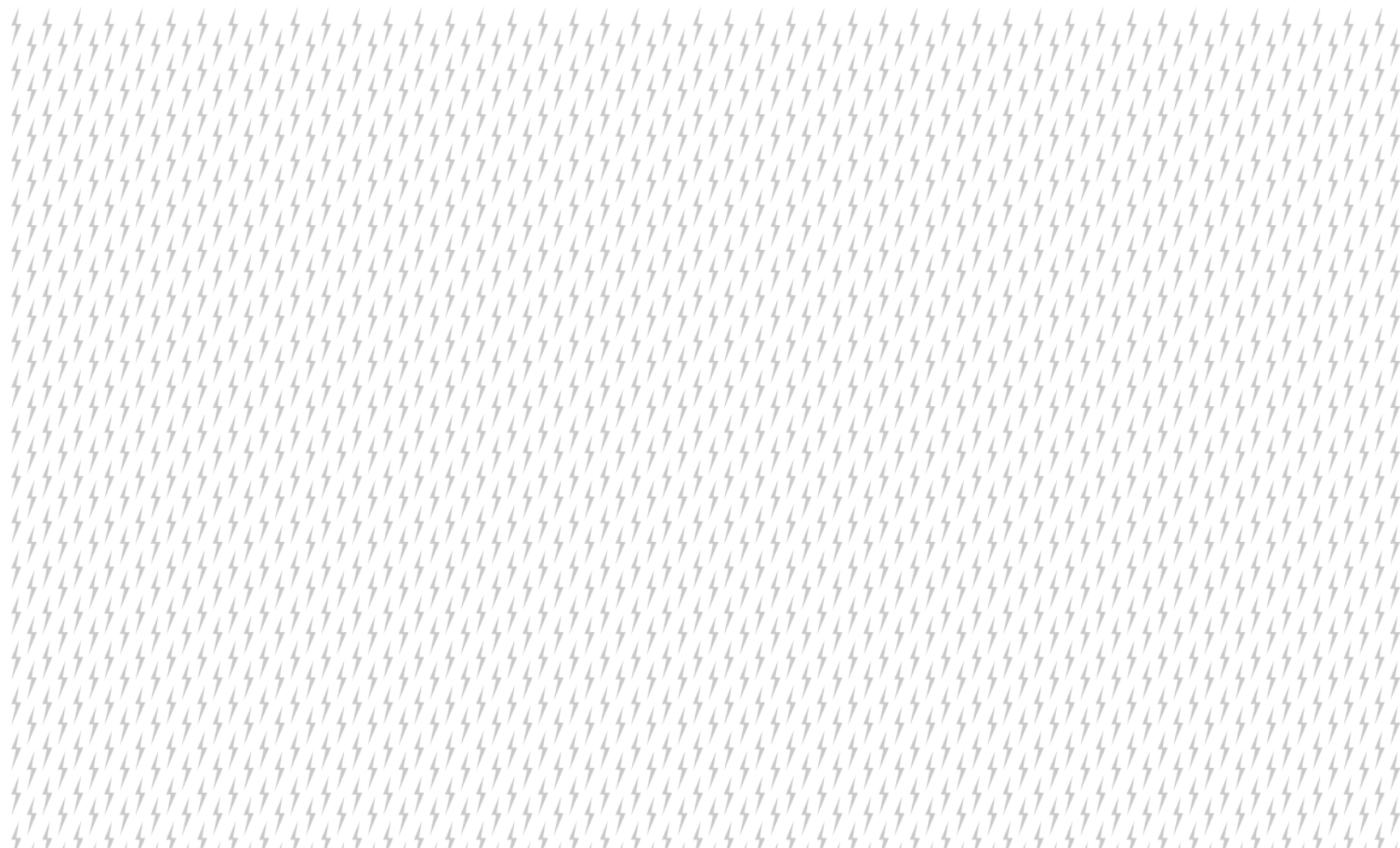
Wear resistant

Sound absorption

Stable size

Chemical resistance

Heat conduction



## 产品简介 INTRODUCTION OF CONSTRUCTION

由聚氯乙烯树脂、增塑剂、稳定剂、偶联剂及导电材料等物质组成，利用塑料粒子界面间形成的导电网络导电，具有永久性防静电功能。

This product has permanent anti-static function because it uses conductive static network formed at the interface of plastic particles.

## 应用范围 APPLICATIONS

广泛适用于电子、微电子、电信环境、网络地板、洁净室、计算机房等有精密仪器和设备动作的场所。

Widely applied to Electronics, microelectronics, telecommunications, network floor, clean room, computer room and other precision instrument and room for equipment operation.

## 质量控制及保证 WARRANTY

- 产品出厂前已进行导电性能测试，符合质量标准。
- 销售代表可现场指导或提供施工技术主持。
- 在购买一年内，产品绝无材料及工艺的缺陷，如遵照施工规范进行安装和维护，可保证其10年的保质期（人为造成和自己施工除外）

以上保证明确取代任何其他的保证，包括但不限于任何暗含的商务可行性或特殊用途的保证。

- The products conductive properties have been tested before out of the factory, in compliance with quality standards.
  - The sales representatives can also provide technical guidance or support in the job site.
  - Within 1 year from purchase, no product defects in the materials and technology, Compliance with regulations for the installation and maintenance, there is 10 years guarantee (except for human reasons and install by buyers themselves)
- Above guarantee replaces any other assurances, including, but not limited to, any guarantee implied in the business feasibility or special purposes.

## 注意事项 ATTENTION

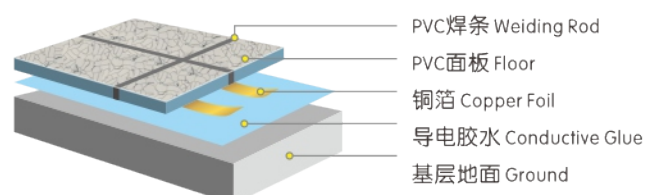
- 由于地板具有不渗透性，便于清洁表面污垢。
  - 使用时切忌锋利的硬物划伤地板，保持表面光滑。
  - 清洗地板时用中性清洁剂擦洗，用清水冲洗后晾干，再上防静电蜡。
  - 严重脏或带黑点可以用地面清洁机器来清洁。
- Because floor is impermeable, the surface dirty is easy to clean.
  - Avoid sharp scratches on the floor by hard object, and maintain a smooth surface.
  - Clearing the floor by neutral detergent, dry after washing, then coat with antistatic wax.
  - Serious dirty or spots can be used to clean the floor cleaning machine.

## 安装 INSTALLATION

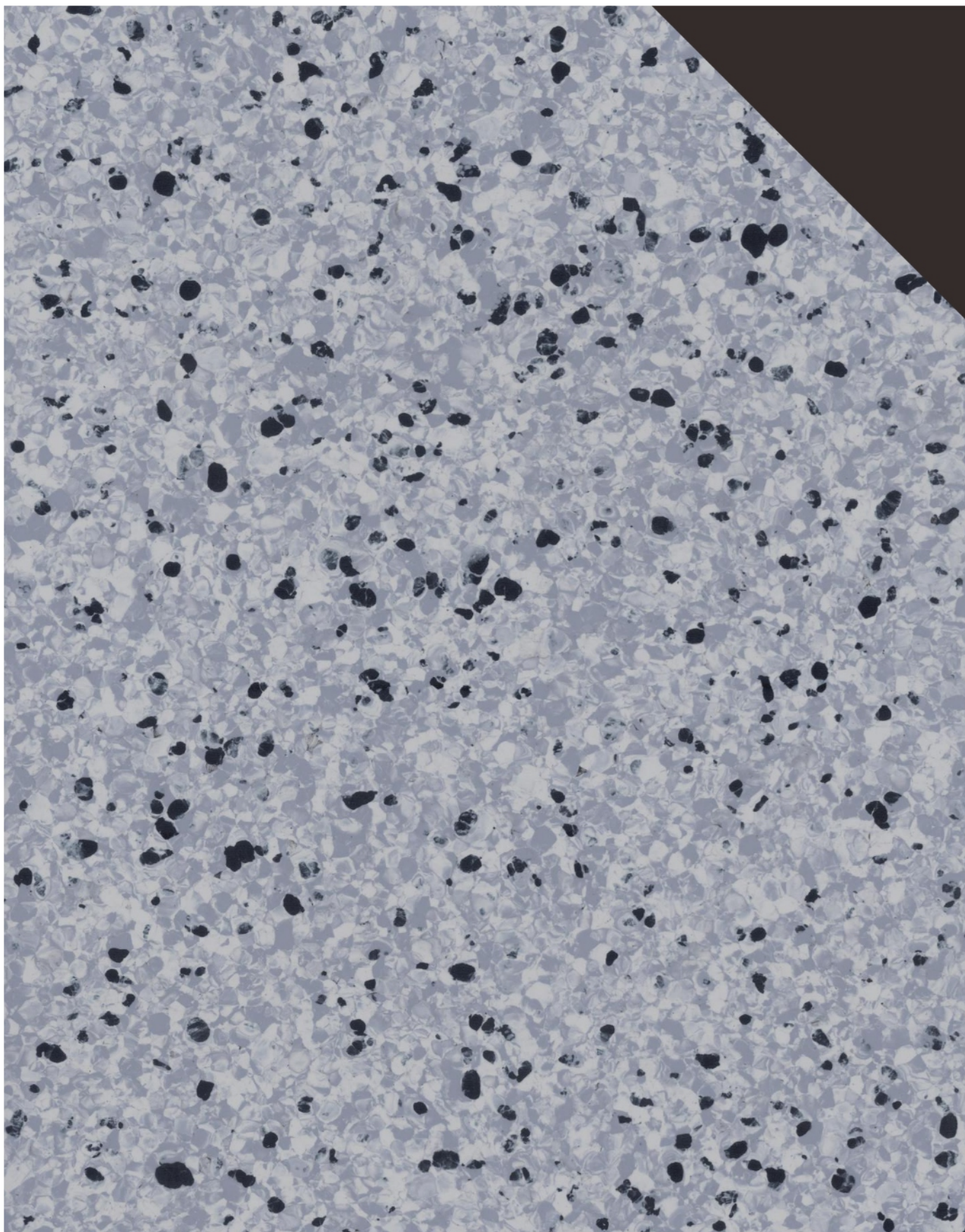
导静电地砖或静电耗散型地砖应该被安装在水平的、光滑的、无裂缝的基础地面上。残余湿度应该根据CM DUMB测试在2.5%以下。地砖、胶水及安装区应达到安装前24小时内至少18度的温度，用质量好的10欧姆以下的导电胶水来粘地砖。并进一步的安装细节问题，欢迎联系我们。

Conductive tile and Static-Dissipative tile should be installed on sub floors that are leveled, smooth and free of cracks. Residual humidity should be under 2.5% tested with the CM Dumb test. Tiles, adhesive and installation site should reach a temperature of at least 18°C at least 24 hours before installation, and paste the tiles with qualified conductive glue below 10 Ohm for further details on installation methods, please ask us.

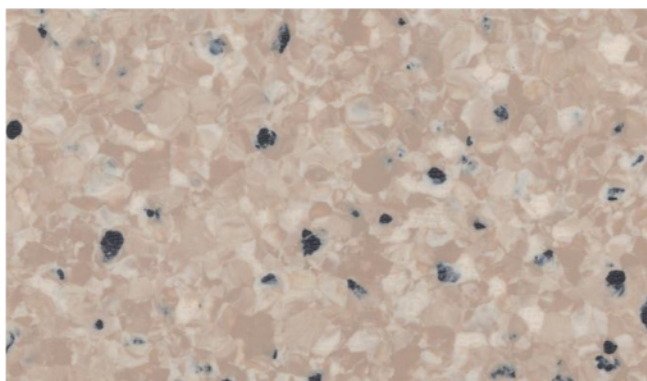
安装示意图



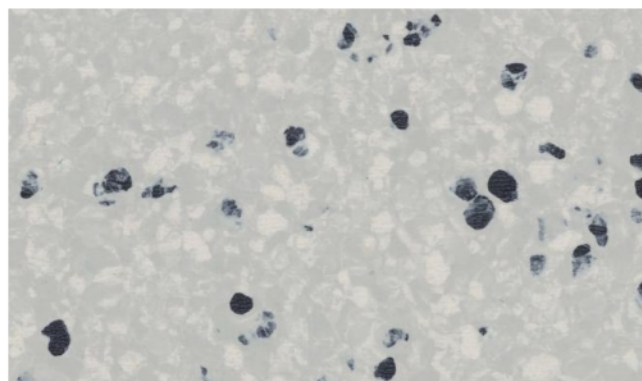




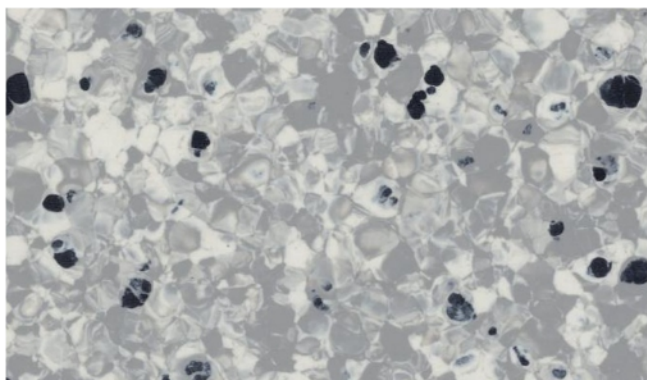




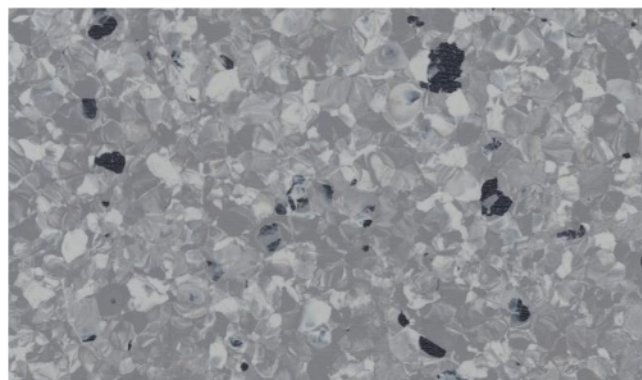
ESD 819-011



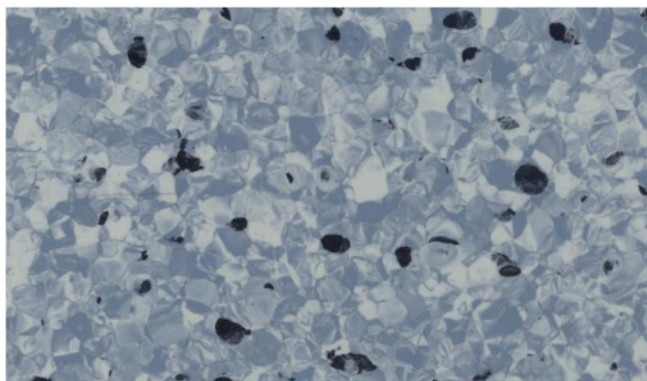
ESD 819-020



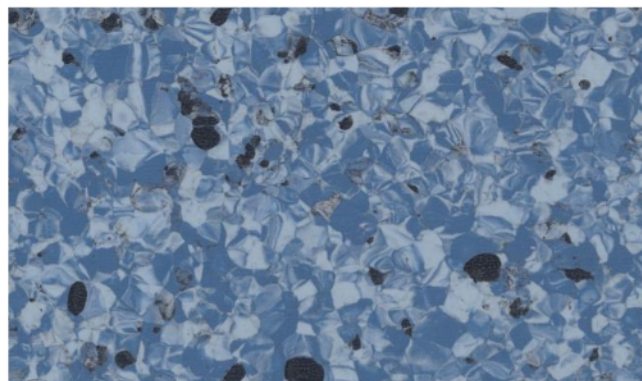
ESD 819-013



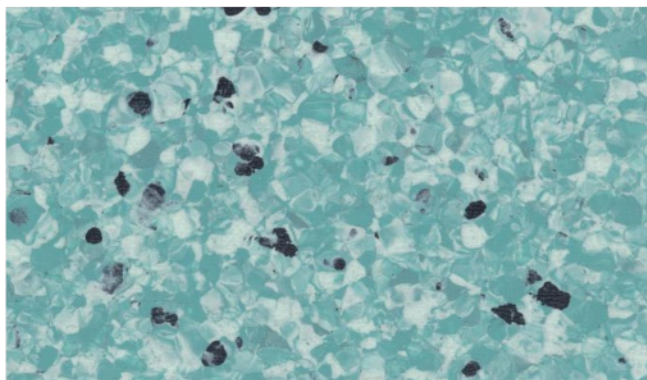
ESD 819-014



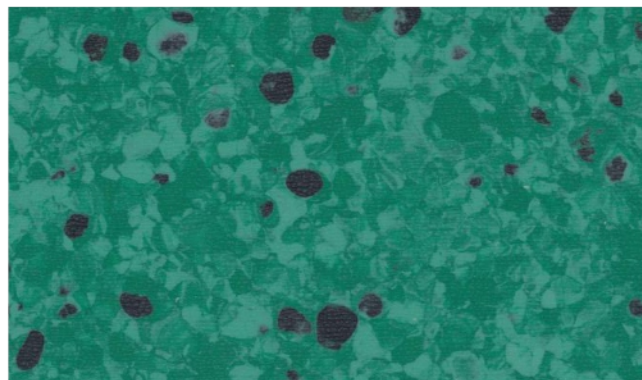
ESD 819-018



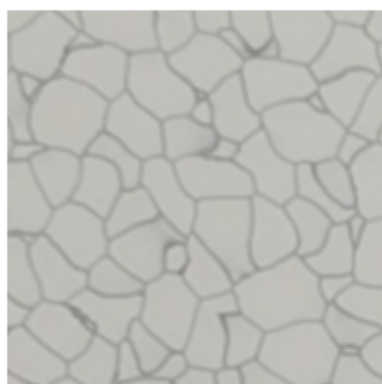
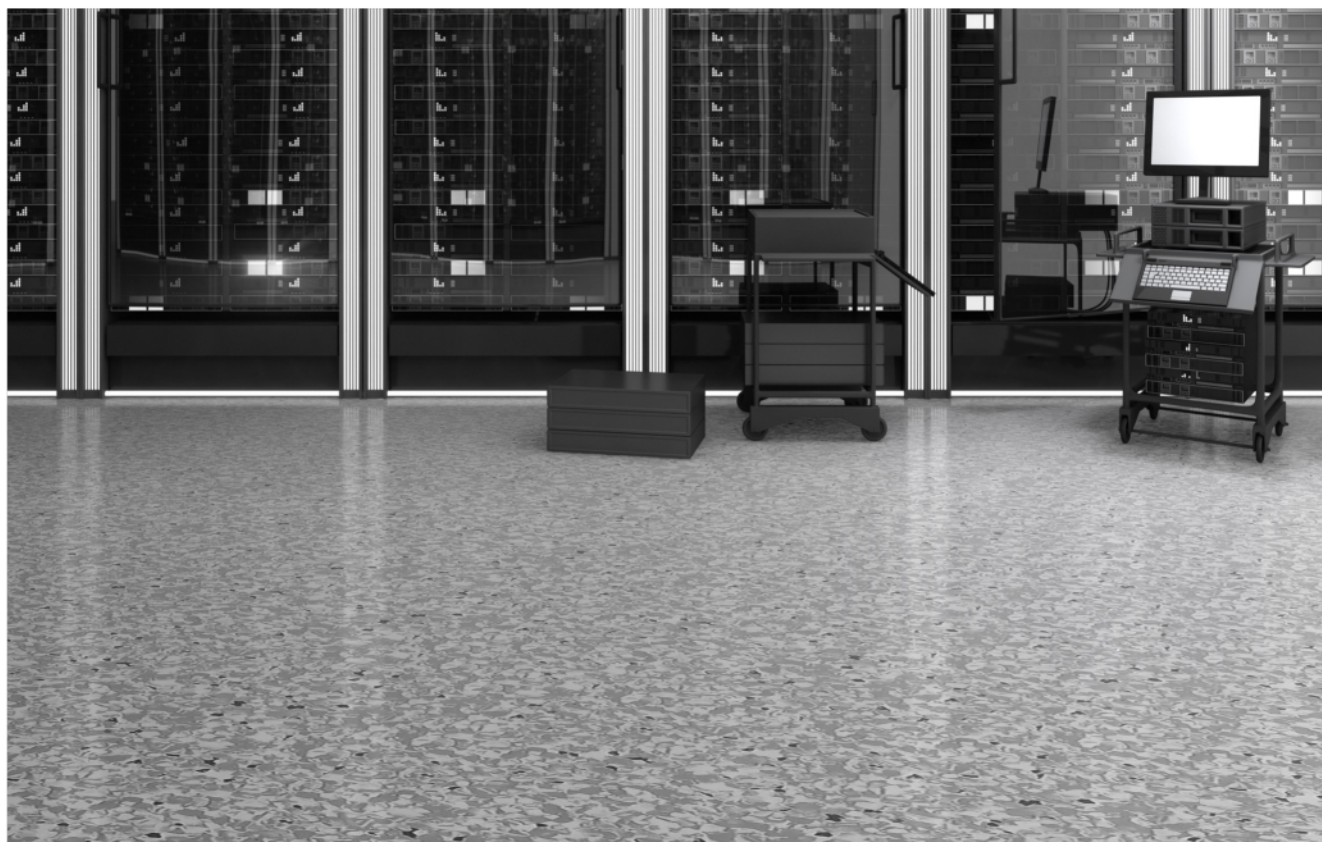
ESD 819-019



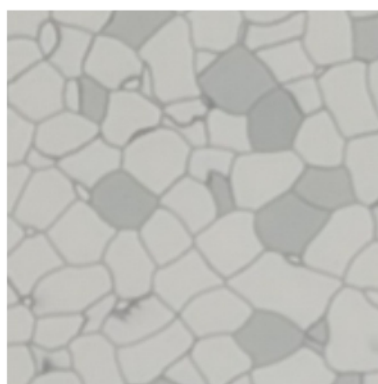
ESD 819-016



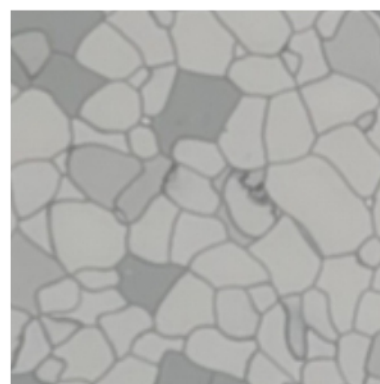
ESD 819-021



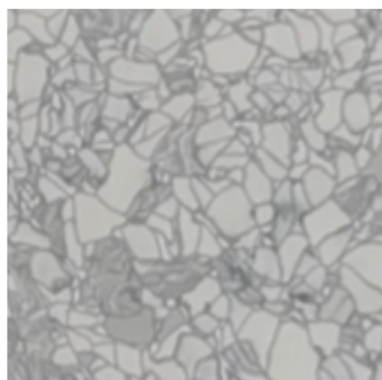
ESD 819-861



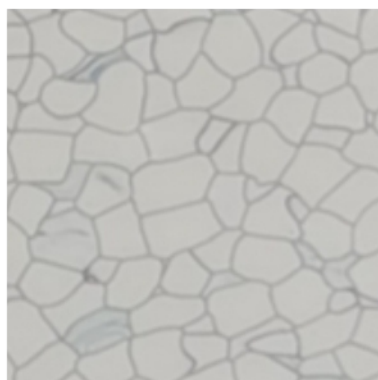
ESD 819-863



ESD 819-864



ESD 819-867



ESD 819-961



ESD 819-962



# ESDFLOR

## Homogeneous ESD Vinyl Tile Static Control Vinyl Floor Covering

### ANTI-STATIC PVC FLOOR 导静电地板

#### 产品数据 Technical Data

项目		片材型	卷材型
长度 EN 426		600mm	20mm
宽度 EN 426		600mm	2m
厚度 EN 428		2.0/3.0mm	2.0mm
系统电阻值 DIN51953,SJ/T11236-2001		$2.5 \times 10^4 - 10^9 \Omega$	$< 1.0 \times 10^6 \Omega$
静电电压衰减期 SJ/T10694-2006		平均 0.4S	$\leq 0.4S$
摩擦起电电压 SJ/T10694-2006(IVI < 100V)		平均 70V	< 70V
吸音性能 EN ISO 717/2		2dB	2dB
燃烧性能	GB8624-2006	Bfl-s1,t0级	Bfl-s1,t0级
	SJ/T11236-2001	FV-0	FV-0
磨耗量 SJ/T11236-2001 ( $\leq 0.02g/m^2, 100$ 转)		平均 0.014	$\leq 0.02$
残余凹陷度 EN433		$\leq 1mm$	$\leq 1mm$
尺寸稳定性 EN434		$\leq 0.1\%$	$\leq 0.4\%$
色牢度	GB/T11982.1-2005	$\geq 3$ 级	$\geq 3$ 级
	EN ISO 105-B02	$\geq 6$ 级	$\geq 6$ 级
耐化学性 EN423		优秀	优秀
脚轮碾压 EN425		适合	适合