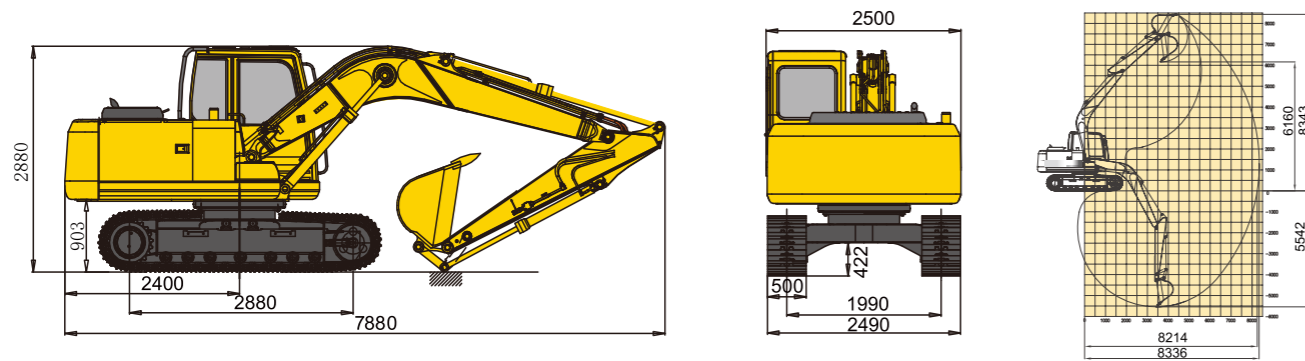


MAIN SPECIFICATIONS

TECHNICAL PARAMETERS

	Name	Date
Basic	Operating weight	14000kg
	Boom length	4600 mm
	Arm length	2500 mm
	Standard bucket	0.56 m ³
	Max.Travel speed	3.3/5.5 km/h
	Max.Swing speed	11.9 rpm
	Grade ability	35°(70%)
	Ground pressure	45 kPa
	Max.Traction force	113 kN
Engine	Engine model	QSF3.8
	Rated power	86 kW/2200 rpm
	Max.Torque	470/1500 N.m/rpm
	Displacement	3.8 L
	Fuel tank	290 L
Hydraulic	Max.Flow(total)	120×2 L/min
	Max.Working pressure	34.3 MPa
	Max.Pilot pressure	3.9 Mpa
	Max.Arm digging force	75 kN(ISO)
	Max.Bucket digging force	116 kN(ISO)
	Hrdraulic oil tank	200 L
	Chassis	Track width
Track shoes number		43(each side)
Carrier rollers number		2(each side)
Track rollers number		7(each side)
Electric	System vottage	24 V
	Battery capacity	24 V,100 Ah×2

RODUCT FEATURES

Cummins HPCR Electronically Controlled Engine. Stable & Reliable, Fuel-efficient

Three-stage Air & Two-stage Fuel Filtering System

Charge Air Cooling System with Parallel Radiator

Dual-pump Double-circuit Constant Power Control Hydraulic System

8 inch LCD Display with Multi Purpose

Camfortable ROPS Cabin with 2.7m³ Operational Space

No Frame Cab Glasses to Enlarge Operation Field of View

Heavy-duty Working Device with High Strength Low Alloyed Steels

OPTIONAL

0.25m³ narrow bucket

0.67m³ loading bucket

0.75m³ loading bucket

Breaking hammer & pipeline

Work warning light

Walking alarm

MP3

Top protecting net

Front protecting net

600mm triple grouser shoes

700mm triple grouser shoes

Track rubber block

24V,120Ah × 2

We May Change Without Notice

ZG150G

SINOMACH-HI International Equipment Co.,Ltd.

额定功率 (Rated Power): 86kW@2200rpm
 操作重量(Operating Weight):14000Kg

斗容量 (Bucker capacity):0.56m³

EXCAVATOR 挖掘机


国机重工集团国际装备有限公司
SINOMACH-HI INTERNATIONAL EQUIPMENT CO., LTD.

Add:No.898 West Huang He Road, Changzhou city, Jiangsu Province, China

PC:213136

Tel:86-519-86781288 86752400

Fax:86-519-86781387

Http://www.sinomachhiglobal.com

E-mail:sales@changlin.com.cn service@changlin.com.cn



V.24011


国机重工集团国际装备有限公司
SINOMACH-HI International Equipment Co.,Ltd.