

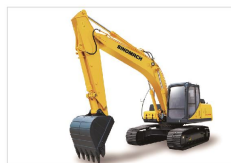
OUR PRODUCTS



Wheel Loader



Motor Grader



Excavator



Backhoe Loader



Vibratory Roller



Pneumatic Roller



Bulldozer



Wheel Excavator



Skid Steer

- Engine model: Kubota V3307T (Tier 3)
- Rated power: 48.9 kW/2000 rpm
- Operating weight: 7.65 t



SINOMACH-HI International Equipment Co.,Ltd.

Add:No.898.Huanghe Road(West),Changzhou City,
Jiangsu Province,China.
P.C:213136
Tel:86-519-86781288 86752400
Fax:86-519-86781387
Http://www.sinomachiglobal.com
E-mail:sales@changlin.com.cn service@changlin.com.cn

DEALER:

2023.02

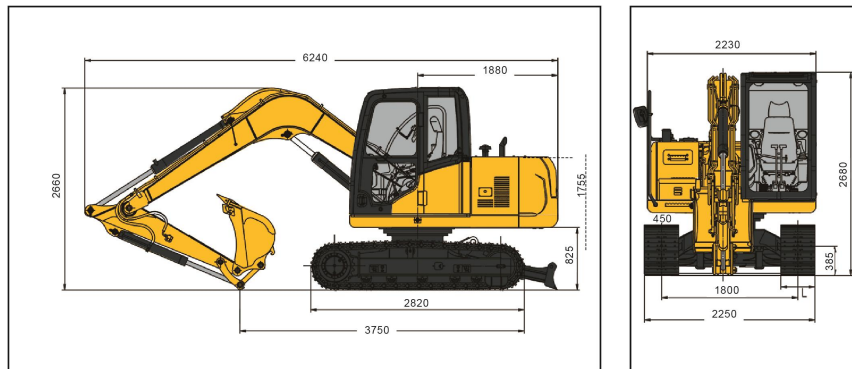


国机重工集团国际装备有限公司
SINOMACH-HI INTERNATIONAL EQUIPMENT CO.,LTD.

Product features

- The Kubota engine conforms to the China-III emission regulation and features high energy-saving and energy-saving and environmental-friendliness, low noise, strong power, and excellent highland adaptability. The aluminum paralleling radiator features large heat dissipation area and good heat dissipation performance.
- The imported hydraulic units from world's renowned brands and the load-sensing hydraulic system with constant power and electronic proportional control supply the oil of required pressure and flow based on the load to minimize the energy loss and realize good motion coordination.
- The accelerator features rapid and accurate control. The application of non-linear multi-dimensional power control optimization improves the working efficiency and reduces the fuel consumption. The preset working modes of Heavy-Load (P), Economic (E), Automatic (A), and Breaking Hammer (B) are at the user's free choice based on the actual working condition. The friendly human-machine interface eases the operations.
- The cab boasts comfortable operation space with broad vision field and the effective color matching of upholstery and reasonable arrangement of controls as per the ergonomic principle. The high performance shock absorbers feature high vibration isolation, low stiffness, and good vibration and shock absorption to guarantee the user's operation comfort.
- The extended and widened wheel tread and track gauge, the enhanced working device, and the reasonably arranged parts guarantee the high safety, stability, and reliability of the machine.
- The streamline appearance design and the coordinated matching between colors and markings forge the China's first-class appearance of machine.

OVERALL DIMENSIONS



- THE SPECIFICATIONS ARE SUBJECT TO CHANGE WITHOUT NOTICE. THE PICTURES MAY INCLUDE OPTIONS. THE ACTUAL COLOR & APPEARANCE OF THE PRODUCT MAY DIFFER FROM WHAT IS SHOWN.

Technical specifications:

	ENGINE	Model	Kubota V3307T
	Type	Water-cooling, turbo charging	
	Quantity of cylinders	4	
	Bore x stroke	94 x 120 mm	
	Displacement	3.3 L	
	Power output	48.9 kW/2000 rpm	
Maximum torque	263.1NM/1400rpm		
	HYDRAULIC SYSTEM	Pump	Imported
	Type	Variable piston pump	
	Maximum discharge flow	160 L/min	
	Control circuit	3.5 MPa	
	Travel circuit	28 MPa	
Swing circuit	23.5 MPa		
	TRAVEL SYSTEM	Travel motor	Variable axial piston motor
	Travel brakes	Lubricated double-disc	
	Parking brake	Pressure release	
	Travel shoes	2 x 39	
	Travel speed	2.9/4.8 km/h	
	Drawbar pulling force	86.5 kN	
	Gradeability	70%	
Minimum ground clearance	385 mm		
	OIL CAPACITY	Fuel tank	120 L
	Cooling system	11 L	
	Engine oil	11 L	
	Hydraulic oil tank	140 L	
	System capacity	160 L	
	SWING SYSTEM	Brake	Pressure Release Mechanical Braking
	Swing speed	11 rpm	
	Tail swing radius	1880 mm	
	Arm digging force	44 KN	
	Bucket digging force	66 KN	
	BUCKET	Bucket capacity	Backhoe bucket 0.32 m (SAE)
	Number of bucket teeth	5	
	Bucket width	860 mm	
	Arm length	1.65 m	
	Maximum digging reach/Maximum digging reach at ground level	6.36 m/6.205 m	
	Maximum digging depth/height	4.12 m/6.945 m	
	Maximum dumping height	4.895 m	
Minimum swing radius	2.04 m		