

Optional Attachment

Rated Power:92kW/93kw
Total Weight:14500Kg



Wheel Loader



Motor Grader



Excavator



Backhoe Loader



Vibratory Roller



Pneumatic Roller



Bulldozer



Truck Mounted Crane



Skid Steer

Wheel Excavator

轮式挖掘机



国机重工集团国际装备有限公司

SINOMACH-HI INTERNATIONAL EQUIPMENT CO., LTD.

Add:No.898 West Huang He Road, Changzhou city, Jiangsu Province, China
PC:213136

Tel:86-519-86781288 86752400

Fax:86-519-86781387

Http://www.sinomachhiglobal.com

E-mail:sales@changlin.com.cn service@changlin.com.cn



V.25011



国机重工集团国际装备有限公司
SINOMACH-HI INTERNATIONAL EQUIPMENT CO.,LTD.

Technical Parameter

Engine model	4BTAA3.9-C125/YC4A125Z-T21
Power	93kw/92kw
Operating Weight (kg)	14500
Bucket capacity (m ³)	0.6

Dimensions

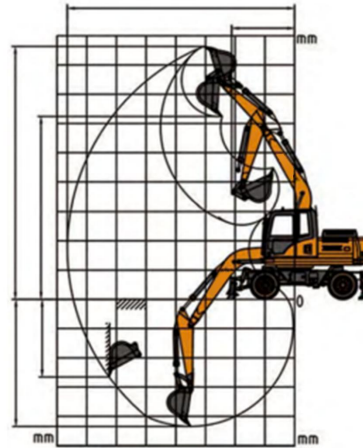
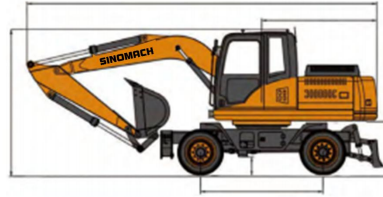
Transportation length (mm)	7900
Transportation height (mm)	3255
Overall width (mm)	2580
Tail turning radius (mm)	2395
Height of turntable (mm)	2500
Track width (mm)	1900
Wheelbase (mm)	2645

Scope of work

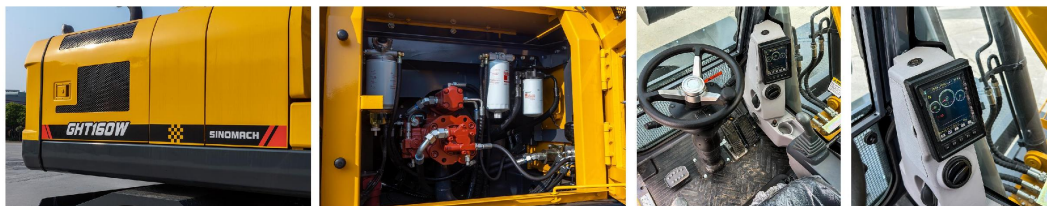
Max excavation height (mm)	8720
Max unloading height (mm)	6300
Max excavation depth (mm)	4865
Max excavation radius (mm)	8060

Working parameters

Hydraulic system pressure (Mpa)	32
Hydraulic system flow (L/min)	2*130
Boom length (mm)	4600
Stick length (mm)	2200
Bucket digging force (kN)	85
Stick digging force (kN)	53
Fuel tank capacity (L)	220
Hydraulic oil tank capacity (L)	180
Climbing slope (%)	≥60
Rotation speed (r/min)	13-14
Max traveling speed (km/h)	30
Bulldozer plate size (mm)	2500*560
Plate lifting height (mm)	450
Plate support height (mm)	60



Parts and details



GHT160w excavator is a new generation of full hydraulic wheel excavator independently developed by SINOMACH. It adopts high-power and low fuel consumption national three standard engine to ensure the strong power and power reserve of the whole machine. The accurate matching of high-efficiency hydraulic system and bridge box ensures the random switching of working state and waking state. The hydraulic system of the whole machine is matched with imported hydraulic components, which has the characteristics of "high reliability, high reliability and high reliability". At the same time, it can provide a variety of special configurations to meet the needs of different countries and customers.



A variety of accessories are available



Comfortable

- The spacious and comfortable cab provides excellent all-round view.
- The new suspension seat in line with ergonomics improves the driver's operation comfort.

Configure

- The third national standard engine adopts new developed fuel saving technology and has strong power.
- The original imported hydraulic system is perfectly matched with the engine, providing accurate flow and improving operation efficiency.

Intelligence

- Intelligent driving computer is adopted, with big data analysis and storage function, timely warning prompt.

Comfortable

- Full time four-wheel drive, equipped with high and low gear, with high-speed walking ability, can achieve rapid transition.
- High driving power, so that the vehicle has a flexible ability to get rid of difficulties, to ensure strong off-road performance.