

GKT285R

ELECTRIC SELF-PROPELLED SCISSOR LIFT

SINOMACH

- **A HYDRAULIC LOAD SENSITIVE SYSTEM WITH CHARACTERISTICS OF ON-DEMAND FUNCTIONS**
- **A MAXIMUM WORKING ANGLE OF 50 DEGREES AS STANDARD**
- **EQUIPPED WITH FLOATING BRIDGE**

DIMENSION

Max. Working Height	28.5m
Max. Platform Height	26.5m
Max. Outreach	21m
Maximum horizontal work amplitude	21.6m
A Length (stowed)	12.05m
B Width (stowed)	2.5m
C Height (stowed)	2.8m
D Wheelbase	3.0m
Ground Clearance	0.44m
Platform Size	2.44*0.9*1.1m

PERFORMANCE

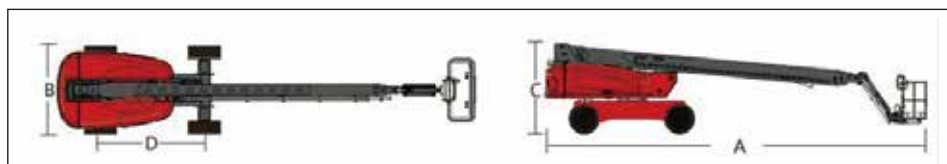
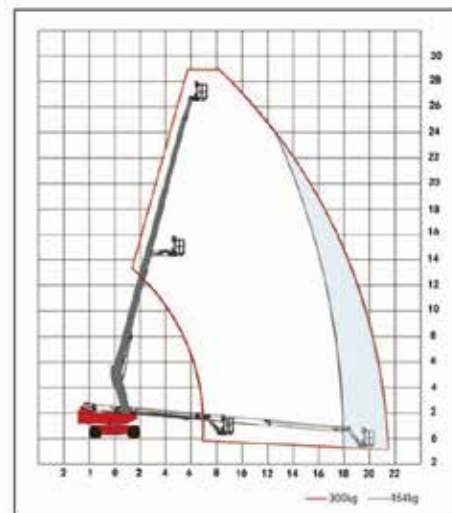
Lift Capacity (Restricted/Unrestricted)	454/300kg
Max. Load number (Restricted/Unrestricted)	3pers/2pers
Drive Speed (Stowed)	5.1km/h
Drive Speed (Raised)	1.1km/h
Gradeability (4WD)	45%
Turntable Rotation (Angle/Continuity)	360°continuous
Platform Rotation	180°
Max. Tilt Angle(front to back/side to side)	5°/3°
Turning Radius (Inside/Outside)	3.6/6.88m
Turntable Tailswing	1.8m
Max. Lateral Force (Restricted/Unrestricted)	400N
Max. Wind Speed	12.5m/s
Tire Specification/ Type	355/55D625(foam filled tire)

POWER

Drive wheels number x Steering wheels number	4x2
Engine (power/speed/specification/brand)	Deutz TD2.9L4,55.4kW Euro 5 emission standard Wechai WP2.3NG75E441,55.4kW StateIV
Hydraulic Tank Capacity	180L
Diesel Fuel Tank Capacity	130L

WEIGHT

Weight	17110kg
--------	---------



国机重工集团国际装备有限公司

SINOMACH-HI INTERNATIONAL EQUIPMENT CO., LTD.

Add: No.898 West Huang He Road, Changzhou city, Jiangsu Province, China

PC: 213136

Tel: 86-519-86781288 86752400

Fax: 86-519-86781387

Http://www.sinomachglobal.com

E-mail: global@changlin.com.cn service@changlin.com.cn

