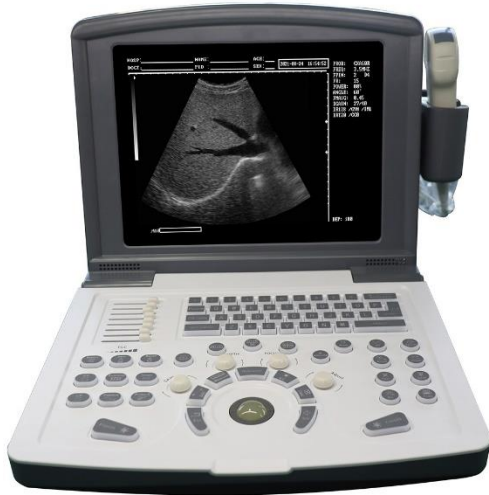


Diagnostic Ultrasound System

(Notebook B/W Ultrasound)

Model: uRason N6



Features:

Feature:

10-inch LCD high-definition display.

-Display mode: B, B/B, B+M, M, 4B.

-Five-level frequency conversion; 8-stage TGC control.

-Probe: Automatic Identification

-Focuses: 4 Section Dynamic Electric Focusing; Dual encoder adjustment

-Image Image Smoothing/ Sharpening, Tissue Harmonic, Histogram, DR, Gamma Correction, Pseudo-Color

-Storage:128 permanent storage; Automatic Report Page

-Ports:SVGA video output; PAL;USB

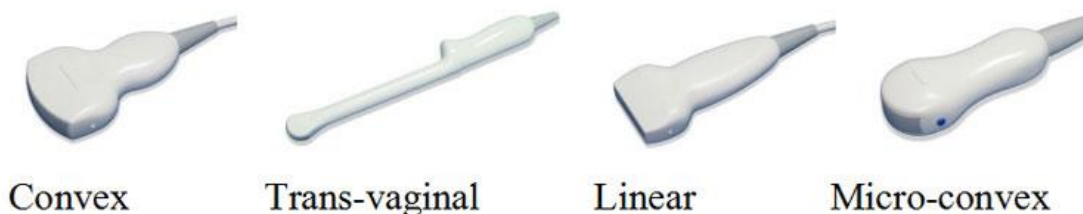
-Optional: 3.5Mhz Convex probe, 6.5Mhz Transvaginal probe; 7.5Mhz Linear, 5Mhz Micro Convex Probe.

Specification:

Index	Contents
Model Name	uRason N6
Type	B/W ultrasound
Image Storage	64 Frames
Display Depth	≥ 160
Scanning Model	Electronic Linear Array, Electronic Convex Array,trans-vaginal

LCD Size	10 Inch
Gray Scale	256 Levels
Image Flip	Up/ Down, Left/ Right, Blake/ White
Imagine processing	Image Smoothing/ Sharpening, Tissue Harmonic, Histogram, DR, Gamma Correction, Pseudo-Color
Measurement	Freehand, Ellips, Distance for Perimeter, Area Volume, Heart, G.A, EDD, BPD-FW, FL, AC, HC, CRL, AD, GS, LMP
Character Display	Date, Clock, Name, PID, Age, Sex, Hospital Name, Doctor
Notation	Full-screen Character Editor, Body Mark, Position Indication
Report	Abdomen and gynecology, Cardiac, Obstetrics, Urology
Display Mode	B, B+B, B+M, M, 4B
Scanning Angle	Adjustable
Cine Loop	≥400 Frames
Output	VGA and PAL video outputs
Power Consumption MAX	100VA
Battery	Built-in 4500mAh
Product Size	289×304×222mm
Carton Size	395×300×410mm
N.W./ G.W.	6kg/ 8kg

Optional Probe



Probe	3.5MHz Convex Probe	7.5MHz Liner Probe	5MHz Micro Convex Probe	6.5MHz Transvaginal Probe
Elements	80	80	80	80
Scan Width	R60	L40	R20	R13

Frequency	2.0/3.0/3.5/4.0/5.5 MHz	6.0/ 6.5/ 7.5/ 10/ 12 MHz	4.5/5.0/5.5 MHz	5.0/6.0/6.5/7.5/9.0 MHz
Display Depth	Adjustable	Adjustable	Adjustable	Adjustable
Scan Depth (mm)	$\cong 160$	$\cong 50$	$\cong 80$	$\cong 40$
Resolution Lateral	$\cong 3$ (depth $\cong 80$) $\cong 4$ ($80 < \text{depth} \cong 130$)	$\cong 2$ (depth $\cong 40$)	$\cong 2$ (depth $\cong 40$)	$\cong 2$ (depth $\cong 30$)
Resolution Axial	$\cong 2$ (depth $\cong 80$) $\cong 3$ ($80 < \text{depth} \cong 130$)	$\cong 1$ (depth $\cong 40$)	$\cong 1$ (depth $\cong 40$)	$\cong 1$ (depth $\cong 40$)
Blind Area (mm)	$\cong 5$	$\cong 3$	$\cong 5$	$\cong 4$
Geometric Position (%) Horizontal	$\cong 15$	$\cong 10$	$\cong 20$	$\cong 10$
Geometric Position (%) Vertical	$\cong 10$	$\cong 5$	$\cong 10$	$\cong 5$





One stop Medical Solution Provider

POWER BY:



LANNX Bio&Med Co.,Ltd

Website: www.lannx.net

E-Mail: sale@lannx.net