

Colku Parking Air Conditioner



Colku Electrical Appliance Ltd.

Tel:
+86 757 87363068

Email:
info@colku.com

Fax:
+86 757 87363067

WeChat:
+86 18028121075

WhatsApp:
+852 95188163

Web:
www.colku.com

Add: No.84 Area B, Leping Industry Park, Sanshui Dist, Foshan City
Guangdong Province, China 528137

About Colku

Colku Electrical Appliance Ltd. was founded in 1989. With the 50000m² workshop and 4 automatic assembly lines, we have the production capacity of 2000 units per day. During the past 25 years, Colku has become a top OEM/ODM manufacturer of truck air conditioner and portable refrigerator. We offer the service from product design, structure build up, molding producing, first sample making, certificates applying to final production. Our factory covers processes including plastic injection, plastic absorber forming, metal lazer cutting, punching, bending, logo printing, foaming injection, compressor producing and final assembling. Colku pays high attention to Quality Control System, and implemented the ISO 9001 and IATF 16949 Systems. With our MES controlling system, we have strict control on each step from incoming materials, semi-products processing, foaming, assembling, electrical testing, leakage detecting, final checking, sampling and ex warehouse.

Figures

- 36 years of manufacturing experience
- 25 years experience of manufacturing & innovation in mobile refrigeration industry
- 4 factory sites, 50000 square meters production workshop
- 4 automatic assembly lines, 300+ employees with 60000 sets monthly output
- 22 cooperation international leading brands
- Products export to 56 countries
- 1 Million units export volume



Patents and Certificates



IATF16949, ISO9001, ISO14001, ISO45001&ISO10012 Management Systems
Products complies UL ETL SAA GS CE CB Certificates and 100+ Patents

Contents

01-04

For Heavy Duty Truck
HT22 | HT23 | HT28 | RS33 | G40

05-06

For Medium Truck
MT20 | MT20A

07-10

Split-type Back/Rooftop Mounted
CB26 | CB26A | CB26H | CT26

11-12

Scroll Compressor Type
EH20 | EH20A | EL20 | EL20A

13-14

Air Conditioning Installation Steps
DC Rooftop Air Conditioner | Split-type DC Air Conditioner

15-16

Air Conditioning Installation Effect
Special Mounting Kit For Special Model | Installation Effect

For Heavy Duty Truck

DC Rooftop Air Conditioner

HT22 | HT23 | HT28 | RS33 | G40

HT22



- * COP 3.0
- * Twin-rotor compressor, fast cooling

HT23



- * COP 3.1
- * Powered twin rotary compressor, high efficiency

Product Parameters	HT22	HT23
Cooling Capacity	2200W	2300W
COP	3.0	3.1
Input Voltage	DC 24V	DC 24V
Refrigerant	R410a/330g	R410a/450g
Working Temperature	16~55°C	16~55°C
Current	8-37A (35°C ambient temp)	8-37A (35°C ambient temp)
Evaporator Air Volume	380m ³ /h	400m ³ /h
Setting Temperature	15~30°C	15~30°C
Weight	31kg/net,39kg/gross	30kg/net,38kg/gross
Product Size		
Air Distributor Size	350mm*345mm*140mm	350mm*345mm*140mm
Outer Body Size	976mm*894mm*210mm	928mm*872mm*188mm
Package Size	1040mm*965mm*455mm	1010mm*960mm*380mm
Loading QTY	59sets/20GP 120sets/40GP 130sets/40HQ	72sets/20GP 144sets/40GP 144sets/40HQ



- * COP 3.25
- * Brushless DC Fan,
Low noise & stability

- * COP 3.0, GMCC rotary compressor
- * Upgrade 3 air outlet

- * COP 3.25
- * Fast cooling, high efficiency

Product Parameters	HT28	RS33
Cooling Capacity	2600W	2700W
COP	3.25	3.0
Input Voltage	DC 24V	DC 24V
Refrigerant	R410a/430g	R410a/460g
Working Temperature	16~55°C	16~55°C
Current	8~40A (35°C ambient temp)	8~38A (35°C ambient temp)
Evaporator Air Volume	400m ³ /h	450m ³ /h
Setting Temperature	15~30°C	15~30°C
Weight	31kg/net,39kg/gross	34kg/net,42kg/gross

Product Size	HT28	RS33
Air Distributor Size	350mm*345mm*140mm	513mm*345mm*140mm
Outer Body Size	928mm*872mm*188mm	905mm*890mm*210mm
Package Size	1010mm*960mm*380mm	965mm*965mm*455mm
Loading QTY	72sets/20GP 144sets/40GP 144sets/40HQ	59sets/20GP 120sets/40GP 120sets/40HQ

Product Parameters	G40
Cooling Capacity	2600W
COP	3.25
Input Voltage	DC 24V
Refrigerant	R410a/430g
Working Temperature	16~55°C
Current	36A (35°C ambient temp)
Evaporator Air Volume	380m ³ /h
Setting Temperature	15~30°C
Weight	32kg/net,40kg/gross

Product Size	G40
Air Distributor Size	350mm*345mm*140mm
Outer Body Size	976mm*894mm*215mm
Package Size	1040mm*965mm*455mm
Loading QTY	59sets/20GP 120sets/40GP 120sets/40HQ



For Medium Truck

DC Rooftop Air Conditioner

MT20 | MT20A

DC Rooftop Air Conditioner

MT20



MT20A



**Energy saving,
special for 24V medium truck**

- * COP 3.1
- * Energy saving, waterproof

**Compact design,
special for 12V medium truck**

- * COP 2.8
- * Compact design, hidden mounting

Product Parameters	MT20	MT20A
Cooling Capacity	1950W	1650W
COP	3.1	2.8
Input Voltage	DC 24V	DC 12V
Refrigerant	R410a/345g	R410a/345g
Working Temperature	16~55°C	16~55°C
Current	8~32A (35°C ambient temp)	15~50A (35°C ambient temp)
Evaporator Air Volume	350m ³ /h	350m ³ /h
Setting Temperature	15~30°C	15~30°C
Weight	23kg/net,29kg/gross	23kg/net,29kg/gross
Product Size		
Air Distributor Size	370mm*228mm*64mm	370mm*228mm*64mm
Mounting Cover Size	520mm*360mm*91mm	520mm*360mm*91mm
Outer Body Size	725mm*700mm*185mm	725mm*700mm*185mm
Package Size	792mm*760mm*352mm	792mm*760mm*352mm
Loading QTY	126sets/20GP , 252sets/40GP , 294sets/40HQ	

Split-type Back/Rooftop Mounted

DC Air Conditioner

CB26 | CB26A



Split-type Back/Rooftop Mounted DC Air Conditioner

CB26



Split-type, back mounted, suitable for vehicle without skylight

- * COP 3.0
- * Place external machine vertically with back mounted

CB26A



Split-type, back mounted, air conditioner for 12V truck

- * COP 2.8
- * Place external machine vertically with back mounted

Product Parameters	CB26	CB26A
Cooling Capacity	2000W	2000W
COP	3.0	2.8
Input Voltage	DC 24V	DC 12V
Refrigerant	R134a/370g	R410a
Working Temperature	16~55°C	16~55°C
Current	35A (35°C ambient temp)	50A (35°C ambient temp)
Evaporator Air Volume	450m ³ /h	450m ³ /h
Setting Temperature	16~30°C	16~30°C
Air Distributor Weight	7kg/net,13.5kg/gross	7kg/net,13.5kg/gross
Outer Body Weight	21kg/net,24kg/gross	21kg/net,24kg/gross
Product Size		
Air Distributor Size	630mm*330mm*190mm	630mm*330mm*190mm
Air Distributor Package Size	695mm*480mm*302mm	695mm*480mm*302mm
Outer Body Size	700mm*475mm*220mm	700mm*475mm*220mm
Outer Body Package Size	795mm*530mm*335mm	795mm*530mm*335mm
Loading QTY	96sets/20GP , 208sets/40GP ,214sets/40HQ	

Split-type Back/Rooftop Mounted DC Air Conditioner

CB26H | CT26



CB26H



Split-type, back mounted, no need for cutting skylight

- * COP 3.0
- * Place external machine horizontally with back mounted

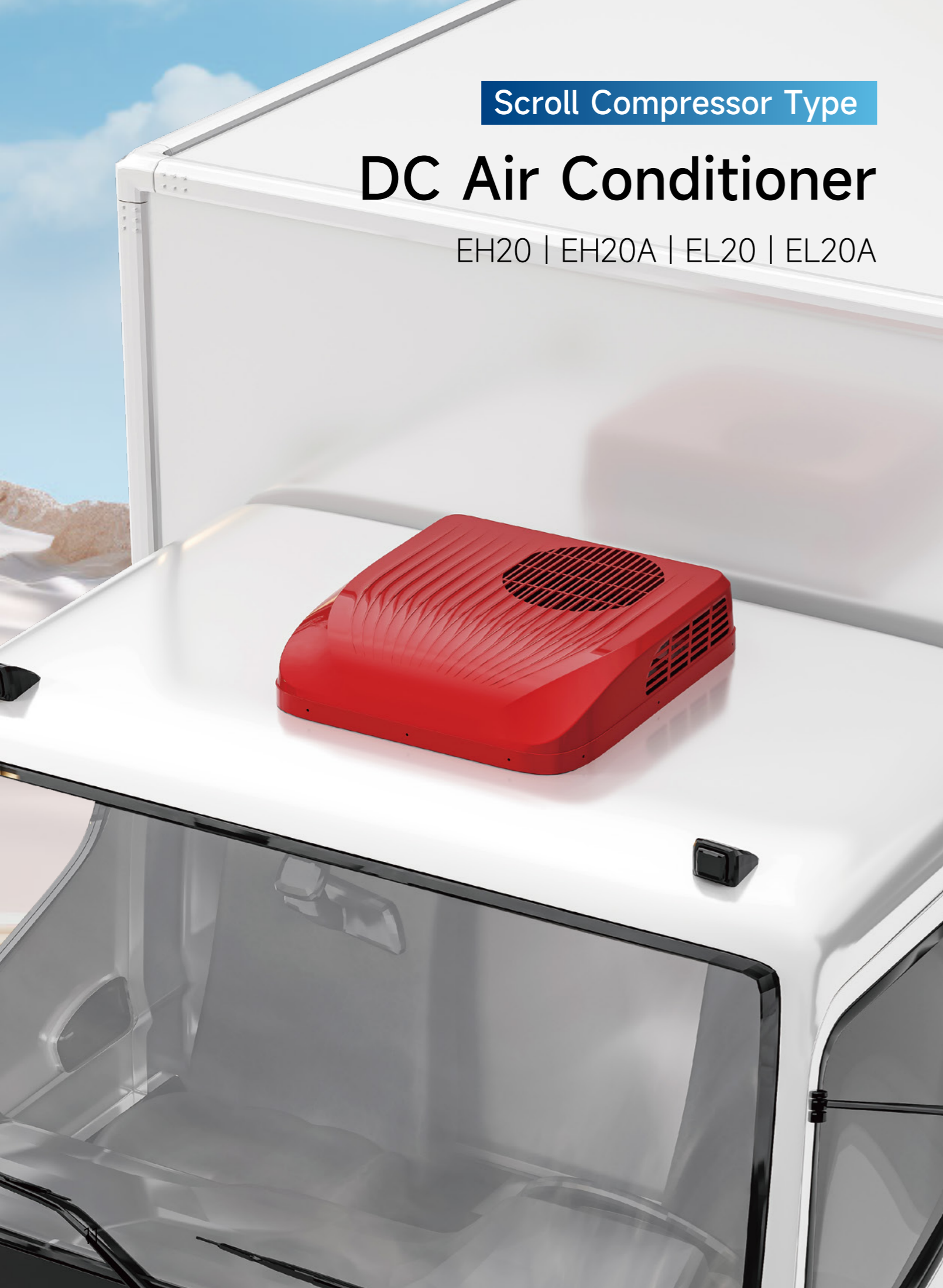
CT26



Split rooftop mounted, hidden design

- * COP 3.0
- * External machine rooftop mounted, hidden in shroud

Product Parameters	CB26H	CT26
Cooling Capacity	2000W	2000W
COP	3.0	3.0
Input Voltage	DC 24V	DC 24V
Refrigerant	R134a/370g	R134a/370g
Working Temperature	16~55°C	16~55°C
Current	35A (35°C ambient temp)	35A (35°C ambient temp)
Evaporator Air Volume	450m ³ /h	450m ³ /h
Setting Temperature	16~30°C	16~30°C
Air Distributor Weight	7kg/net,13.5kg/gross	7kg/net,13.5kg/gross
Outer Body Weight	21kg/net,24kg/gross	21kg/net,24kg/gross
Product Size		
Air Distributor Size	630mm*330mm*190mm	630mm*330mm*190mm
Air Distributor Package Size	695mm*480mm*302mm	695mm*480mm*302mm
Outer Body Size	735mm*440mm*220mm	735mm*440mm*220mm
Outer Body Package Size	795mm*530mm*335mm	795mm*530mm*335mm
Loading QTY	96sets/20GP , 208sets/40GP , 214sets/40HQ	



Scroll Compressor Type

DC Air Conditioner

EH20 | EH20A | EL20 | EL20A

DC Air Conditioner

EH20&
EH20A



EL20&
EL20A



For heavy duty truck

- * Upgraded internal and external brushless fans, low noise
- * Scroll compressor, high efficiency

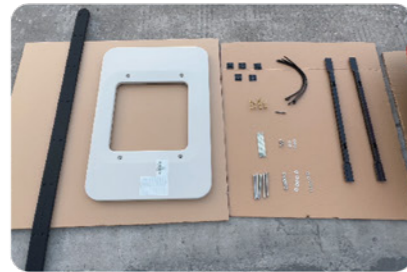
For medium truck

- * Scroll compressor, high efficiency; Ultra-thin body, lightweight design
- * 360° circulating air intake, three-dimensional air supply

Product Parameters	EH20	EH20A	EL20	EL20A
Cooling Capacity	2000W	1800W	1850W	1650W
COP	2.5	2.48	2.5	2.5
Input Voltage	DC 24V	DC 12V	DC 24V	DC 12V
Refrigerant	R134a/430g	R134a/450g	R134a/340g	R134a/310g
Working Temperature	16~55°C	16~55°C	16~55°C	16~55°C
Current (35°C ambient temp)	15~37A	50A	36A	50A
Evaporator Air Volume	380m ³ /h	380m ³ /h	330m ³ /h	330m ³ /h
Setting Temperature	15~30°C	15~30°C	15~30°C	15~30°C
Weight	30kg/net,38kg/gross		22kg/net,28kg/gross	

Product Size	EH20	EL20
Air Distributor Size	350mm*345mm*140mm	370mm*228mm*64mm
Outer Body Size	928mm*872mm*185mm	725mm*700mm*185mm
Package Size	995*940*400mm	792mm*760mm*352mm
Loading QTY	60sets/20GP 120sets/40GP 144sets/40HQ	126sets/20GP 252sets/40GP 294sets/40HQ

How to Install DC Rooftop Air Conditioner



NOTE

The installation accessories may vary slightly among different truck models. Below are the installation steps using universal installation accessories.



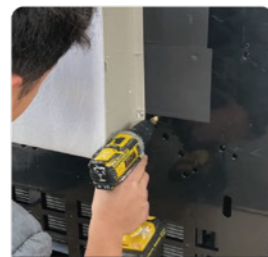
Step01: Remove the sunroof from the truck's roof (if there is no sunroof to remove and cutting is required, the recommended cut-out size is: 380mm front-to-back and 480mm side-to-side)



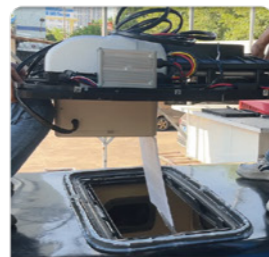
Step02: Clean the area around the sunroof and apply waterproof adhesive tape (if the roof surface is uneven, ensure the waterproof tape is tightly adhered without gaps)



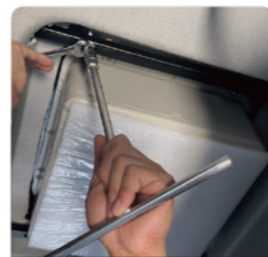
Step03: Apply glass sealant on top of, around, and at the joints of both ends of the waterproof tape.



Step04: Install the core pull nuts on the black base plate of the air conditioner. This step can be done before steps 1, 2, and 3 (if the sunroof size is around 380*480mm, use the universal decorative cover, and the nuts should be installed in holes No. 6 and No. 7. The specific holes to use depend on the actual sunroof size).



Step05: Center the air conditioner on top of the tape.



Step06: Use black iron rods and screws to securely fix the decorative cover.



Step07: Use magic tape and straps to secure the power cord along the back of the truck and route it to the battery location.



Step08: Connect the positive and negative terminals of the power cord to the corresponding positive and negative terminals of the battery.



Step09: Turn on the air conditioner for testing and let it run for 10 minutes. Operate the remote control to observe if the mode and fan speed change normally.

How to Install Split-type DC Air Conditioner



Step01: Select a suitable installation location for the outer unit, mark and drill holes



Step02: Install rivets in the fixing holes of the bracket



Step03: Remove the upper cover of the outer unit, place it in the designated location, and use the matching screws to fix it



Step04: Choose a suitable location for mounting plate, then hang the air distributor on it, and drill the screws into the corresponding holes



Step05: Select a drilling location according to the installation location and pipe routing direction of the air conditioner, then use straps to wrap the internal and outer units links



Step06: Choose a suitable location to separate the drain pipe separately, continue to bandage it. And then use connecting pipes to connect internal and outer units



Step07: Extend the power cord out of the hole and wrap the exposed part of the pipe with a sponge



Step08: Connect the power cord to the outer unit and secure it with a tie, and vacuum for 30 minutes



Step09: Turn on the air conditioner to test the operating effect. If there is no problem, reinstall the upper cover of the outer unit

Special Mounting Kit For Special Model

Installation Effect



Mercedes-Benz



Man



Scania



①



②



③



IVECO



Volvo



Hyundai



④



⑤



⑥