



Brand Product Manual

YuHuang pay more attention to the higher sales volume brought by quality.

YH FASTENER - Your Trusted Precision Manufacturing Partner

Our Product Range

Spring Plunger Standard Parts

It is used for positioning and locking of industrial parts products, including clamping, rotational positioning and sound positioning.

- Spring Plunger (Video demonstration)
- Threaded plunger (Video demonstration)
- Multi-Pin Plunger (Video demonstration)
- Universal Ball (Video demonstration)
- Ball Lock Pins & Slot Pins (Video demonstration)
- Turning (Video demonstration)
- CNC Machining (Video demonstration)
- Index Pin (Video demonstration)

About Enterprises

YH FASTENER- Win-win cooperation

YH FASTENER

As a specialist manufacturer specialising in precision components, YH Fastener offers high quality ball actuators, springs, spring actuators, turned parts and CNC machined products.



YH Office

Why Choose YH?

Our in-house R&D team continually optimises product performance. For example, our stainless steel locating balls and spring thimbles feature rigorous material upgrades using SUS316 for extreme environments, ensuring superior fatigue resistance.



YH Workshop

Strict Quality Control?

We have established a full-process quality control system, strictly controlling from R&D to production. We ensure quality through professional quality inspection and continuously optimize to win trust with quality.

Production Indicators

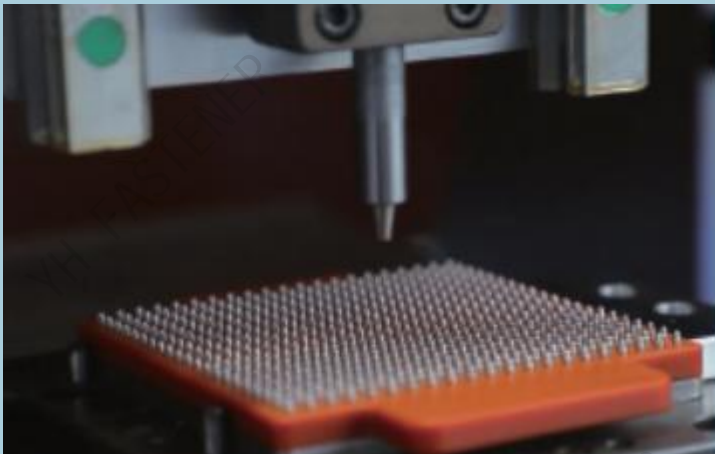
Scientifically formulate production targets, strictly implement them and monitor them in real time, and continuously optimize them through data analysis to ensure efficient achievement.



Product Assembly Workshop



Spring Production Workshop



**Fully Automated
Production**

Automation

The shell, spring and assembly are all completed automatically, ensuring more stable quality.



More Production Workshops On Display



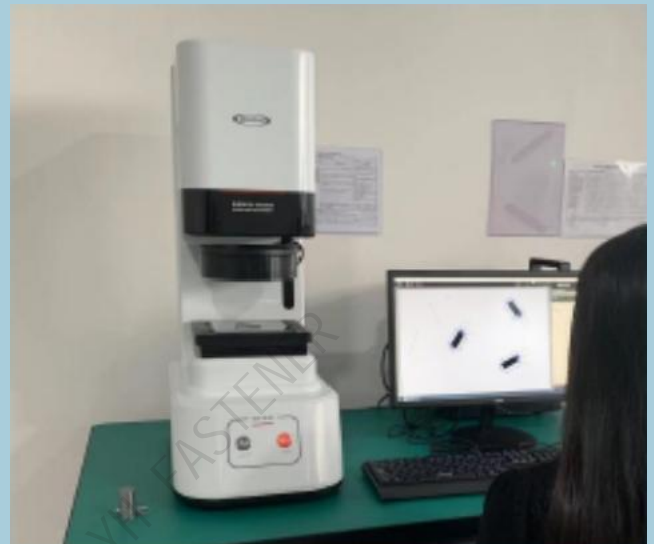
About Quality

YH FASTENER -Win-win cooperation



JISO Elasticity testing equipment

Precise force-measuring machines are adopted to accurately test and record,ensuring the accuracy of the products.



DISOFOO Electronic measurement

After using manual measurement of the product, Further electronic size measurement will be carried out..



REK Batch screening

Before shipment, further batch screening is adopted to ensure the overall quality of the products.



GaoShen Spectrometer

Before the production of the product,the composition of the materials procured should be identified to ensure that the material meets the standards required by the customer and achieves the desired outcomes.



Standard Product

YH FASTENER

Your Trusted Precision Manufacturing Partner

Spring Plunger

Model:DGDS-010



Spring plunger,suitable for a variety of applications,such as locking,including.

Positioning,rotation positioning, and sound positioning.

Component disassembly

The following components are produced separately and then assembled uniformly.◦



Beads

Support material customization



Spring

Support elastic customization



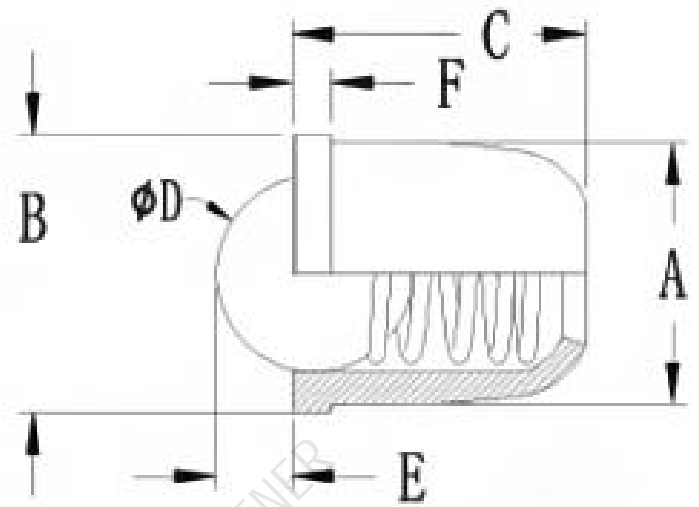
Shell

Support material customization



Specification sheet

Customization is available



Model	Size						The Highest Use Temperature	Pressure Load(N)
	A _{±0.03}	B _{±0.02}	C _{±0.03}	D _{±0.01}	E _{±0.01}	F _{±0.03}		
DGDS-010	1.0	1.5	2.0	0.75	0.25	0.30	+250	2N - 4N
DGDS-015	1.5	2.0	2.0	1.20	0.40	0.50	+250	2N - 5N
DGDS-020	2.0	2.5	3.0	1.50	0.50	0.70	+250	3N - 7N
DGDS-030	3.0	3.5	4.0	2.38	0.80	0.75	+250	3N - 8N
DGDS-040	4.0	4.5	5.0	3.00	1.00	0.90	+250	4N - 9N
DGDS-050	5.0	5.5	6.0	4.00	1.30	1.00	+250	5N - 13N
DGDS-060	6.0	6.5	7.0	5.00	1.70	1.00	+250	5N - 16N
DGDS-080	8.0	8.5	9.0	6.35	2.30	1.10	+250	6N - 25N
DGDS-100	10.0	11.0	13.0	8.50	3.20	1.70	+250	7N - 30N
DGDS-120	12.0	13.0	16.0	10.0	3.90	2.50	+250	8N - 50N

Spring Plunger

Model:DGDS-030



Spring plunger,suitable for a variety of applications,such as locking,including.

Positioning,rotation positioning, and sound positioning.

Component disassembly

The following components are produced separately and then assembled uniformly.◦



Beads

Support material customization



Spring

Support elastic customization



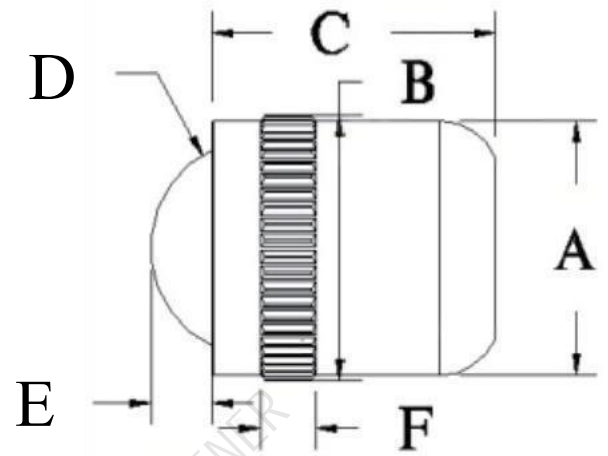
Shell

Support material customization



Specification sheet

Customization is available



Model	Size						The Highest Use Temperature	Pressure Load(N)
	A(± 0.02)	B	C(± 0.05)	D(± 0.01)	E(± 0.10)	F		
HDGDS03-015	1.5	1.5	2.0	1.20	0.4		+250	2N ~ 4N
HDGDS03-020	2.0	2.0	3.0	1.50	0.5		+250	2N ~ 5N
HDGDS03-021	2.0	2.0	4.0	1.50	0.5		+250	3N ~ 6N
HDGDS03-030	3.0	3.05	4.0	2.38	0.8	1.0	+250	3N ~ 8N
HDGDS03-040	4.0	4.05	5.0	3.00	1.0	1.5	+250	4N ~ 9N
HDGDS03-050	5.0	5.05	6.0	4.00	1.3	1.5	+250	5N ~ 12N
HDGDS03-060	6.0	6.05	7.0	5.00	1.7	2.5	+250	5N ~ 15N
HDGDS03-080	8.0	8.08	9.0	6.35	2.3	2.5	+250	6N ~ 23N
HDGDS03-100	10.0	10.09	13.0	8.50	3.2	3.5	+250	8N ~ 38N
HDGDS03-120	12.0	12.10	16.0	10.0	3.9	3.5	+250	10N ~ 50N

Spring Plunger

Model:PZ-020



Spring plunger,suitable for a variety of applications,such as locking,including.

Positioning,rotation positioning,
and sound positioning.

Component disassembly

The following components are produced separately and then assembled uniformly.



Beads

Support material customization



Spring

Support elastic customization



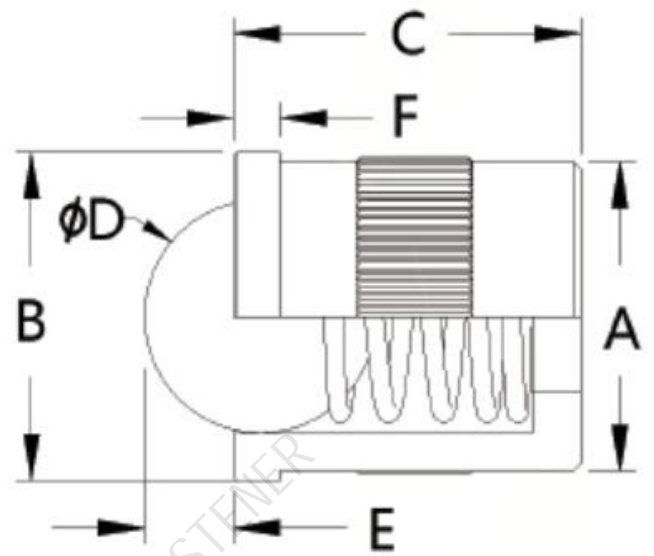
Shell

Support material customization



Specification sheet

Customization is available



Model	Size						The Highest Use Temperature	Pressure Load(N)
	A(+0.03)	B(+0.02)	C(+0.05)	D(+0.01)	E(+0.10)	F(+0.01)		
PZHW-010	1.0	1.5	2.0	0.75	0.25	0.30	+250	2N ~ 4N
PZHW-015	1.5	2.0	2.5	1.20	0.40	0.50	+250	2N ~ 5N
PZHW-020	2.0	2.5	3.0	1.50	0.50	0.70	+250	3N ~ 7N
PZHW-030	3.0	3.5	4.0	2.38	0.80	0.80	+250	3N ~ 8N
PZHW-040	4.0	4.5	5.0	3.00	1.00	0.90	+250	4N ~ 9N
PZHW-050	5.0	5.5	6.0	4.00	1.30	1.00	+250	5N ~ 13N
PZHW-060	6.0	6.5	7.0	5.00	1.70	1.00	+250	5N ~ 16N
PZHW-080	8.0	8.5	9.0	6.35	2.30	1.10	+250	6N ~ 25N
PZHW-100	10.0	11.0	13.0	8.50	3.20	1.70	+250	7N ~ 30N
PZHW120	12.0	13.0	16.0	10.0	3.90	2.50	+250	8N ~ 50N

Spring Plunger

Model:PZ-010



Spring plunger, suitable for a variety of applications, such as locking, including. Positioning, rotation positioning, and sound positioning.

Component disassembly

The following components are produced separately and then assembled uniformly.



Beads

Support material customization



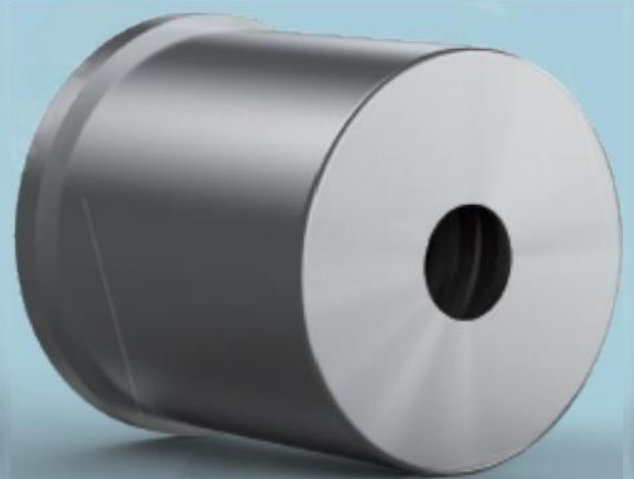
Spring

Support elastic customization



Shell

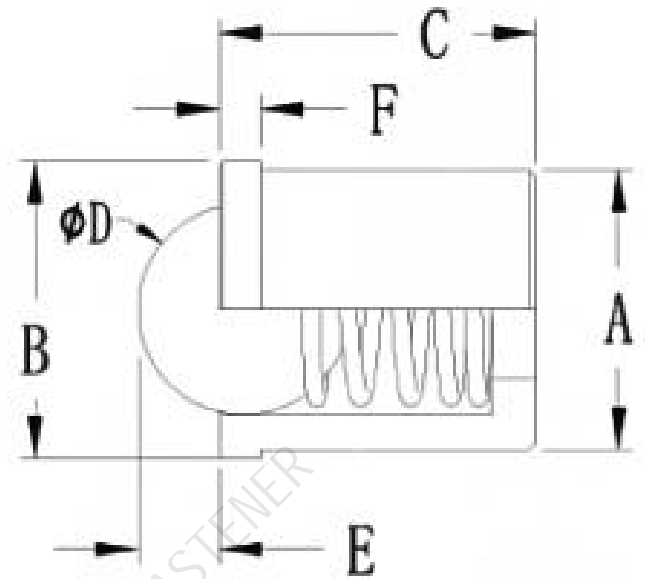
Support material customization





Specification sheet

Customization is available



Model	Size						The Highest Use Temperature	Pressure Load(N)
	A(+0.03)	B(+0.02)	C(+0.05)	D(+0.01)	E(+0.01)	F(+0.01)		
PZ-010	1.0	1.5	2.0	0.75	0.25	0.50	+250	2N - 4N
PZ-015	1.5	2.0	2.0	1.20	0.40	0.50	+250	2N - 5N
PZ-020	2.0	2.5	3.0	1.50	0.50	0.70	+250	3N - 7N
PZ-030	3.0	3.5	4.0	2.38	0.80	0.75	+250	3N - 8N
PZ-040	4.0	4.5	5.0	3.00	1.00	0.90	+250	4N - 9N
PZ-050	5.0	5.5	6.0	4.00	1.30	1.00	+250	5N - 13N
PZ-060	6.0	6.5	7.0	5.00	1.70	1.00	+250	5N - 16N
PZ-080	8.0	8.5	9.0	6.35	2.30	1.10	+250	6N - 25N
PZ-100	10.0	11.0	13.0	8.50	3.20	1.70	+250	7N - 30N
PZ-120	12.0	13.0	16.0	10.0	3.90	2.50	+250	8N - 50N

Spring Plunger(POM)

Model:POM-010



YH FASTENER

Spring plunger,suitable for a variety of applications,such as locking,including. Positioning,rotation positioning, and sound positioning.

Component disassembly

The following components are produced separately and then assembled uniformly..



Beads

Support material customization



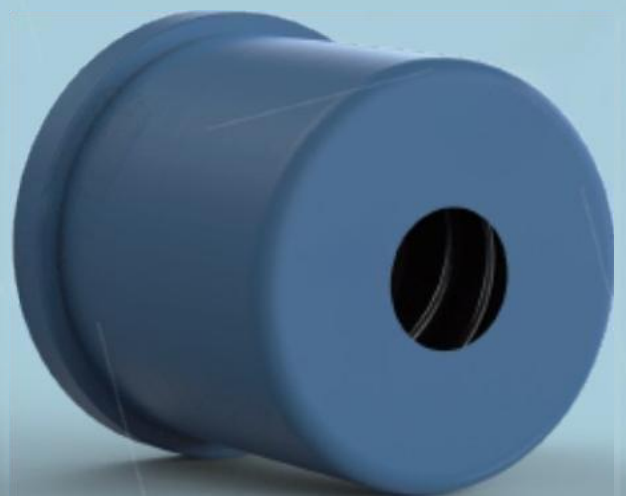
Spring

Support elastic customization



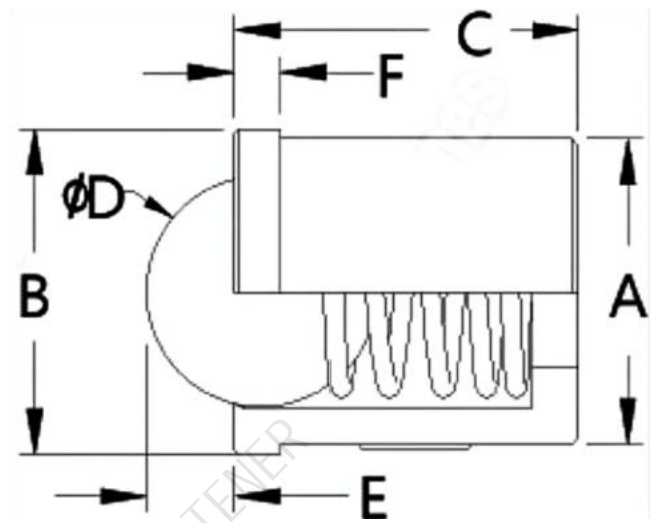
Shell

Support material customization



Specification sheet

Customization is available



Model	Size						The Highest Use Temperature	Pressure Load(N)
	A(+0.05)	B(+0.05)	C(+0.03)	D(+0.01)	E(+0.1)	F(+0.03)		
POM-030	3.0	3.5	4.0	2.38	0.7	0.75	+70	3N ~ 6N
POM-040	4.0	4.5	5.0	3.00	0.9	0.9	+70	4N ~ 10N
POM-050	5.0	5.5	6.0	4.00	1.2	1.0	+70	6N ~ 15N
POM-060	6.0	6.5	7.0	5.00	1.5	1.0	+70	6N ~ 17N
POM-080	8.0	8.5	9.0	6.00	2.0	1.2	+70	8N ~ 30N
POM-100	10.0	11.0	12.0	8.00	2.4	1.5	+70	8N ~ 30N

Spring Plunger

Model:TH-113

YH FASTENER



Spring plunger,suitable for a variety of applications,such as locking,including.

Positioning,rotation positioning, and sound positioning.

Component disassembly

The following components are produced separately and then assembled uniformly.



Beads

Support material customization



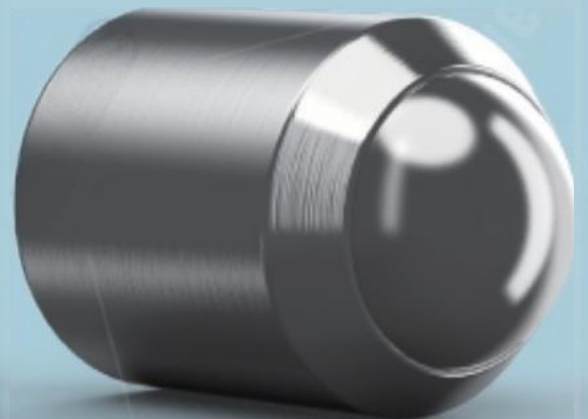
Spring

Support elastic customization



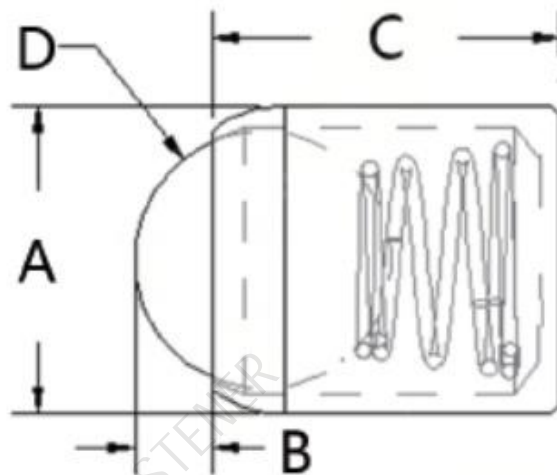
Shell

Support material customization



Specification sheet

Customization is available



Model	Size				The Highest Use Temperature	Pressure Load(N)
	A(±0.02)	B(±0.1)	C(±0.05)	D(±0.01)		
TH-015	1.5	0.3	2.0	1.00	+250	2N ~ 5N
TH-020	2.0	0.5	3.0	1.50	+250	3N ~ 6N
TH-021	2.0	0.5	4.0	1.50	+250	3N ~ 7N
TH-030	3.0	0.8	4.0	2.38	+250	3N ~ 8N
TH-040	4.0	1.0	5.0	3.00	+250	4N ~ 9N
TH-050	5.0	1.3	6.0	4.00	+250	5N ~ 13N
TH-06	6.0	1.7	7.0	5.00	+250	5N ~ 16N
TH-080	8.0	2.3	9.0	6.35	+250	6N ~ 25N
TH-100	10.0	3.2	13.0	8.50	+250	7N ~ 30N
TH-120	12.0	3.9	16.0	10.0	+250	8N ~ 50N

Spring Plunger

Model:TH-115



Spring plunger,suitable for a variety of applications,such as locking,including.

Positioning,rotation positioning, and sound positioning.

Component disassembly

The following components are produced separately and then assembled uniformly.



Beads

Support material customization



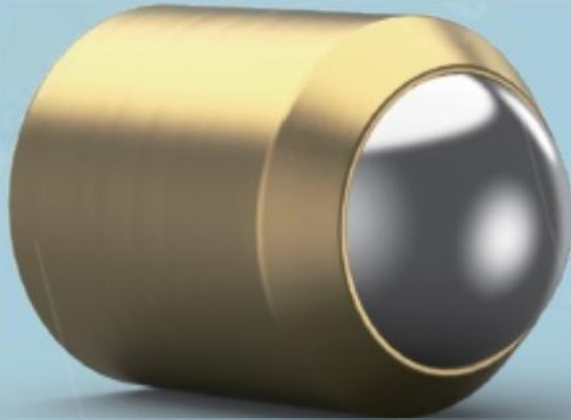
Spring

Support elastic customization



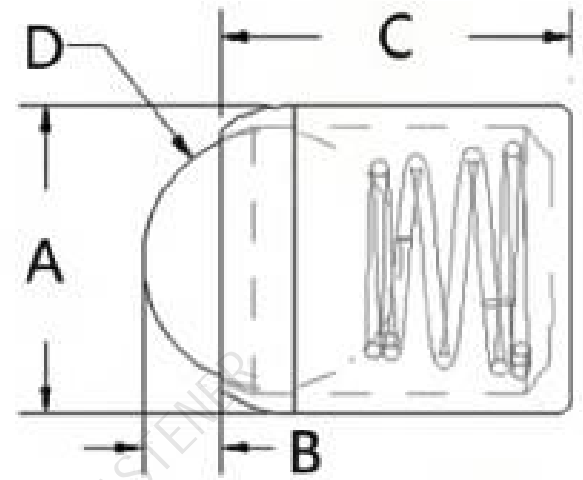
Shell

Support material customization



Specification sheet

Customization is available



Model	Size				The Highest Use Temperature	Pressure Load(N)
	A(-0.02)	B(-0.01)	C(-0.005)	D(-0.001)		
THT-015	1.5	0.5	2.0	1.00	+250	2N - 5N
THT-020	2.0	0.5	3.0	1.50	+250	5N - 6N
THT-021	2.0	0.5	4.0	1.50	+250	3N - 7N
THT-030	3.0	0.8	4.0	2.38	+250	3N - 8N
THT-040	4.0	1.0	5.0	3.00	+250	4N - 9N
THT-050	5.0	1.3	6.0	4.00	+250	5N - 13N
THT-06	6.0	1.7	7.0	5.00	+250	5N - 16N
THT-080	8.0	2.5	9.0	6.55	+250	6N - 25N
THT-100	10.0	3.2	15.0	8.50	+250	7N - 30N
THT-120	12.0	3.9	16.0	10.0	+250	8N - 50N

Spring Plunger

Model:TH-116



Spring plunger,suitable for a variety of applications,such as locking,including.

Positioning,rotation positioning, and sound positioning.

Component disassembly

The following components are produced separately and then assembled uniformly.。



Beads

Support material customization



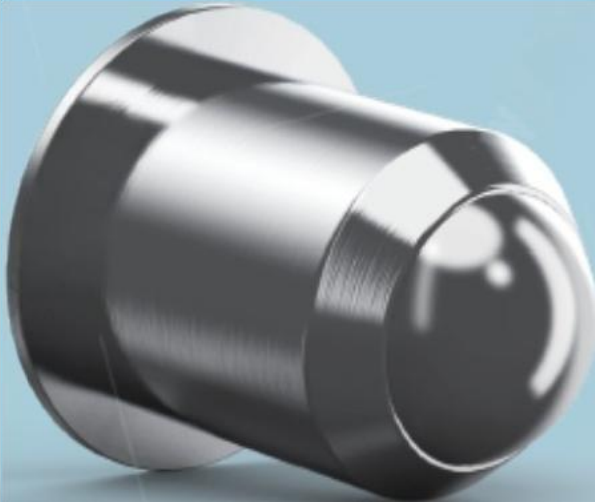
Spring

Support elastic customization



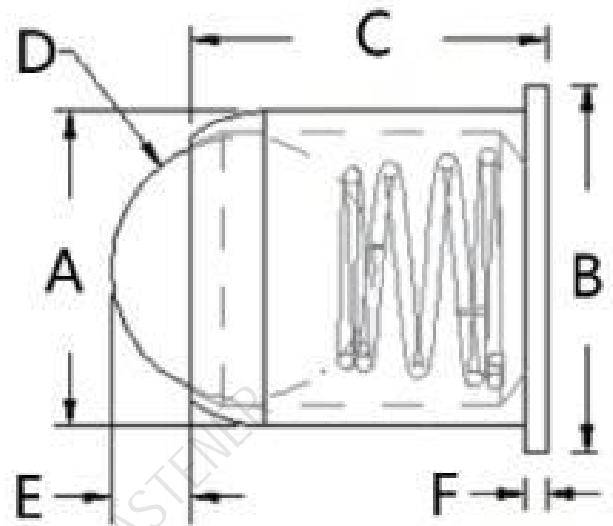
Shell

Support material customization



Specification sheet

Customization is available



Model	Size						The Highest Use Temperature	Pressure Load(N)
	A(+0.02)	B(+0.1)	C(+0.03)	D(+0.01)	E(+0.1)	F		
TH-015	1.5	2.5	2.0	1.20	0.4	0.30	+250	2N - 5N
TH-020	2.0	3.5	3.0	1.50	0.5	0.50	+250	3N - 7N
TH-030	3.0	4.5	4.0	2.38	0.8	0.75	+250	5N - 8N
TH-040	4.0	5.5	5.0	3.00	1.0	0.90	+250	4N - 9N
TH-050	5.0	6.5	6.0	4.00	1.3	1.00	+250	5N - 13N
TH-060	6.0	7.5	7.0	5.00	1.7	1.00	+250	5N - 16N
TH-080	8.0	9.5	9.0	6.35	2.3	1.10	+250	6N - 25N
TH-100	10.0	11.5	13.0	8.50	3.2	1.7	+250	7N - 30N
TH-120	12.0	13.5	16.0	10.00	3.9	2.5	+250	8N - 50N

Universal Ball

Model:GZ-010



YH FASTENER

Composed of high-strength inner and outer rings.
For the height of the equipment

Efficient operation provides
reliable guarantee.

During actual operation, the wear-resistant cage evenly separates the balls to prevent them from colliding and rubbing against each other, ensuring that they roll stably along the predetermined trajectory.

Meanwhile, the balls continuously roll in a loop within the raceways of the inner and outer rings.



Universal Ball

Model:GZ-020

YH FASTENER

Composed of high-strength inner and
outer rings.
For the height of the equipment

Efficient operation provides
reliable guarantee.

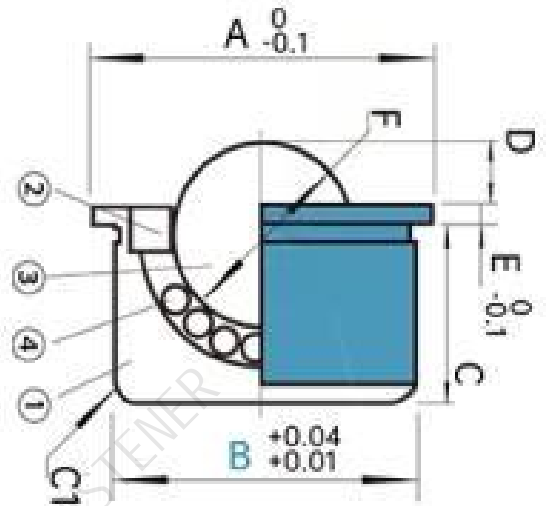
During actual operation,the wear-resistant cage evenly
separates the balls to prevent them from colliding and
rubbing against each other,ensuring that they roll stably
along the predetermined trajectory.

Meanwhile,the balls continuously roll in a loop within
the raceways of the inner and outer rings.



Specification sheet

Customization is available



Model	Size						The Highest Use Temperature	Pressure Load(N)
	A	B	C	D	E	F		
GZ-020-L4	9	7.5	4	1.1	1	4	+250	12 (1.2) 6 (0.6)
GZ-020-L5	11	9	5	1.2	1	4.76	+250	14 (1.4) 7 (0.7)
GZ-020-L6	13	11	6	1.5	1	5.56	+250	41 (4.2) 27 (2.8)
GZ-020-L9	17	15	9	2.5	1	8.75	+250	55 (5.6) 34 (3.5)
GZ-020-L10	20	18	10	3.5	1	10.32	+250	62 (6.3) 55 (5.6)
GZ-020-L14	26	24	14	5.3	1.5	15.87	+250	69 (7)
GZ-020-L17	32	30	17	6.3	2	19.05	+250	82 (8.4)

Flange Plunger

Model:FL-050



YH FASTENER

Spring plunger,suitable for a variety of applications,such as locking,including.

Positioning,rotation positioning, and sound positioning.

Component disassembly

The following components are produced separately and then assembled uniformly.◦



Beads

Support material customization



Spring

Support elastic customization



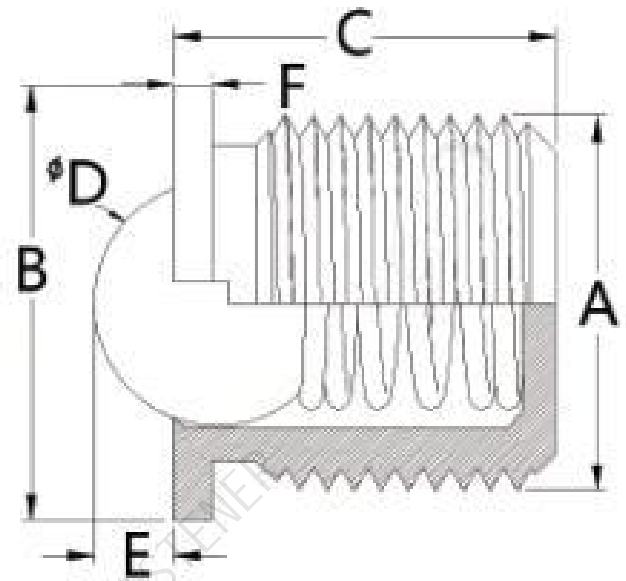
Shell

Support material customization



Specification sheet

Customization is available



Model	Size						The Highest Use Temperature	Pressure Load(N)
	A(mm)	B(+0.02)	C(+0.02)	D(+0.15)	E(+0.02)	F		
FL-004	4	6	4	2.38	0.7	1.5	+250	2N - 4N
FL-005	5	7	5	3.0	0.8	1.5	+250	5N - 13N
FL-006	6	8	6	4.0	1.0	1.5	+250	3N - 12N
FL-008	8	10	7	5.0	1.6	1.5	+250	6N - 20N
FL-010	10	12	9	6.35	1.6	1.5	+250	6N - 22N
FL-012	12	14	11.5	8.0	2.4	1.5	+250	15N - 30N
FL-014	14	16	14	9.0	2.8	1.5	+250	16N - 30N
FL-016	16	18	16	10.0	3.2	1.5	+250	19N - 37N

Threaded Plunger

Model:LWX-010



Spring plunger,suitable for a variety of applications,such as locking,including.

Positioning,rotation positioning,
and sound positioning.

Component disassembly

The following components are produced separately and then assembled uniformly.。



Beads

Support material customization



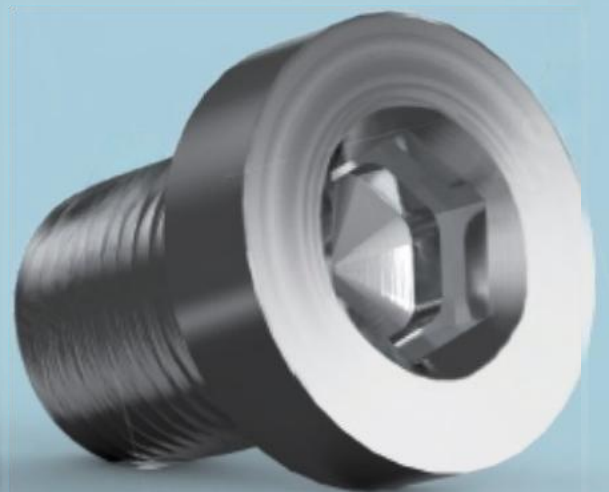
Spring

Support elastic customization



Shell

Support material customization



Spring Plunger

Model:ST-010

YH FASTENER



Spring plunger,suitable for a variety of applications,such as locking,including.

Positioning,rotation positioning,
and sound positioning.

Component disassembly

The following components are produced separately and then assembled uniformly.◦



Beads

Support material customization



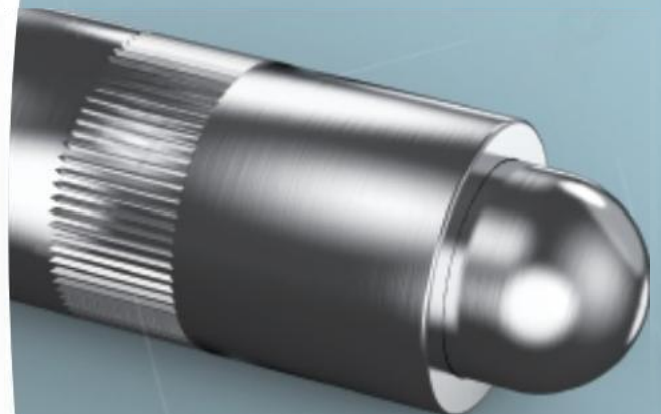
Spring

Support elastic customization



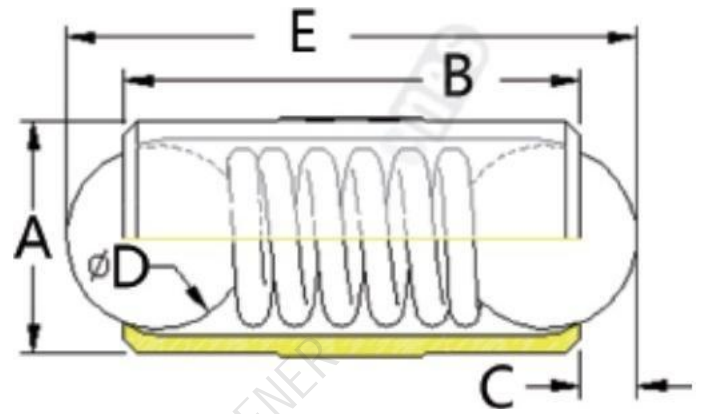
Shell

Support material customization



Specification sheet

Customization is available



Model	Size						The Highest Use Temperature	Pressure Load(N)
	A(+0.02)	B	C	D	E	压花(+0.05)		
ST-025	2.5	5.3	0.7	2.0	6.6	2.52	+250	1.3N ~ 5.5N
ST-030	3.0	7.3	0.8	2.5	8.9	3.03	+250	2.2N ~ 5.5N
ST-040	4.0	9.0	0.9	3.0	10.8	4.03	+250	2.6N ~ 8.5N
ST-050	5.0	10.8	1.2	4.0	13.2	5.03	+250	3.8N ~ 9.5N
ST-060	6.0	12.0	1.5	5.0	15.0	6.03	+250	4.5N ~ 11N
ST-070	7.0	14.0	2.0	6.0	18.0	7.03	+250	5.5N ~ 13N
ST-080	8.0	18.0	2.1	6.5	22.2	8.03	+250	6.5N ~ 17N

Ball Lock Pins

Model: LH-060



The pull-out pin can be easily inserted into the preset hole position, taking advantage of the tight fit between the pin body and the hole wall.

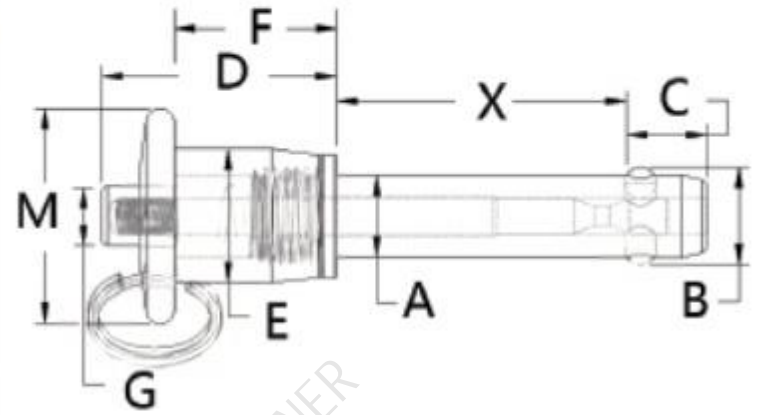
This accessory is widely used in fields such as mechanical manufacturing, automotive maintenance, and mold assembly.

It is particularly suitable for scenarios that require frequent disassembly and assembly or have high requirements for positioning accuracy. It is an ideal choice to ensure the reliability and flexibility of component connections.



Specification sheet

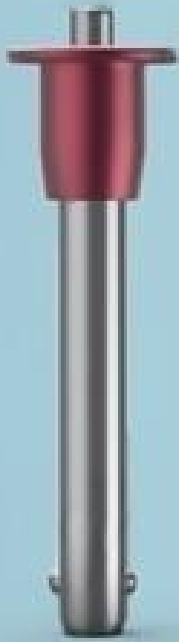
Customization is available



Model	Size									The Highest Use Temperature	Pressure Load(N)
	A(+0.1)	B	C	D	E	F	G	M	X		
L07-05	5.0	5.6	6.00	23.4	13.0	16.3	5.8	20.5	35.0	+250	可定制
L07-06	6.0	7.0	6.66	23.4	13.0	16.3	5.8	20.5	40.0	+250	可定制
L07-08	8.0	9.4	8.00	23.4	13.0	16.3	5.8	20.5	45.0	+250	可定制
L07-10	10.0	12.0	9.00	25.8	14.6	17.6	7.4	25.0	50.0	+250	可定制
L07-12	12.0	14.4	9.90	32.7	17.9	21.7	10.5	34.6	50.0	+250	可定制

Ball Lock Pins

Model: LH-070



The pull-out pin can be easily inserted into the preset hole position, taking advantage of the tight fit between the pin body and the hole wall.

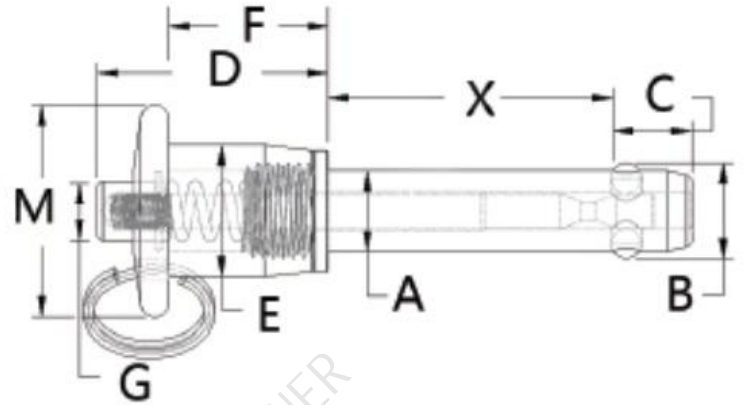
This accessory is widely used in fields such as mechanical manufacturing, automotive maintenance, and mold assembly.

It is particularly suitable for scenarios that require frequent disassembly and assembly or have high requirements for positioning accuracy. It is an ideal choice to ensure the reliability and flexibility of component connections.



Specification sheet

Customization is available



Model	Size									The Highest Use Temperature	Pressure Load(N)
	A(+0.1)	B	C	D	E	F	G	M	X		
L07-05	5.0	5.6	6.00	23.4	13.0	16.3	5.8	20.5	35.0	+250	可定制
L07-06	6.0	7.0	6.66	23.4	13.0	16.3	5.8	20.5	40.0	+250	可定制
L07-08	8.0	9.4	8.00	23.4	13.0	16.3	5.8	20.5	45.0	+250	可定制
L07-10	10.0	12.0	9.00	25.8	14.6	17.6	7.4	25.0	50.0	+250	可定制
L07-12	12.0	14.4	9.90	32.7	17.9	21.7	10.5	34.6	50.0	+250	可定制



Pull Ring Plungers

Model: LH-080



The pull-out pin can be easily inserted into the preset hole position, taking advantage of the tight fit between the pin body and the hole wall.

This accessory is widely used in fields such as mechanical manufacturing, automotive maintenance, and mold assembly. It is particularly suitable for scenarios that require frequent disassembly and assembly or have high requirements for positioning accuracy. It is an ideal choice to ensure the reliability and flexibility of component connections.



Index Pin

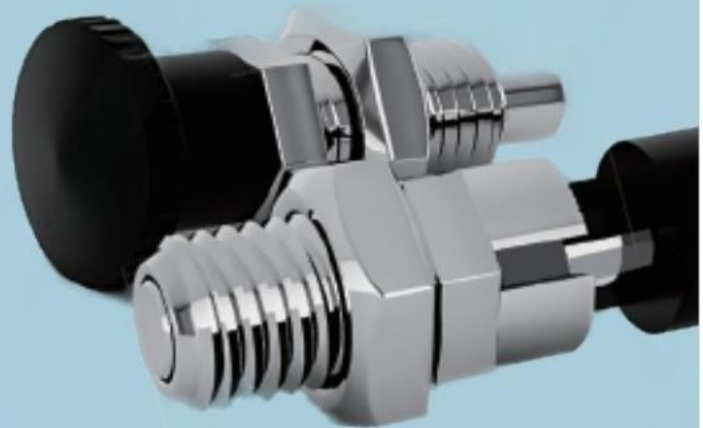
Model:FD-N253



The pull-out pin can be easily inserted into the preset hole position, taking advantage of the tight fit between the pin body and the hole wall.

This accessory is widely used in fields such as mechanical manufacturing, automotive maintenance, and mold assembly.

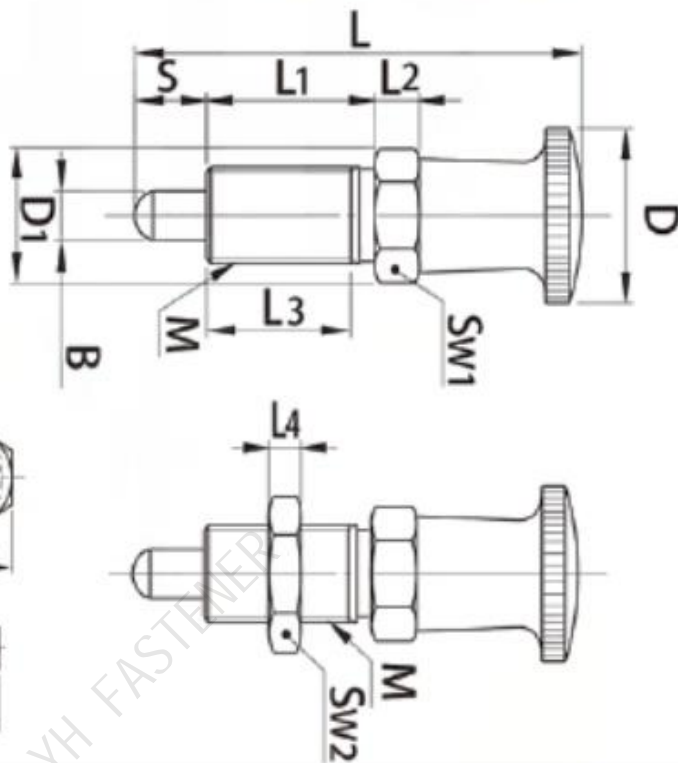
It is particularly suitable for scenarios that require frequent disassembly and assembly or have high requirements for positioning accuracy. It is an ideal choice to ensure the reliability and flexibility of component connections.





Specification sheet

Customization is available



Reset type

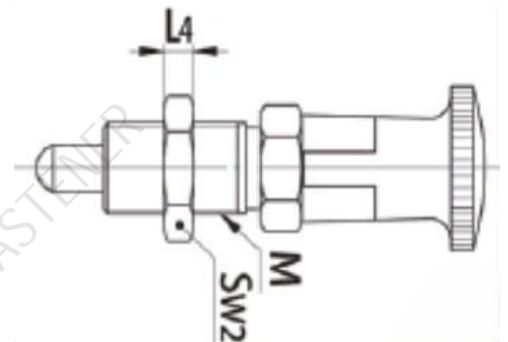
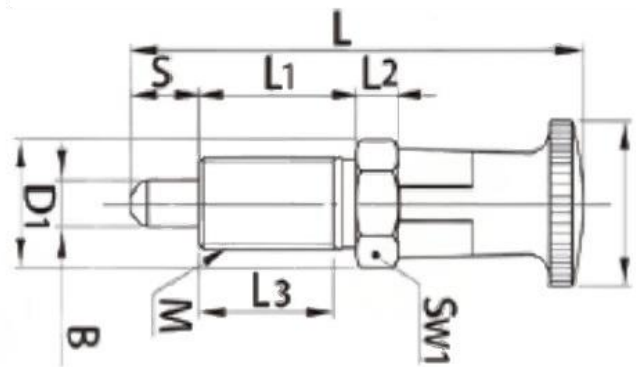
M	螺距 粗牙	B	S	D	D1	L	L1	L2	L3	L4	L5	SW1	SW2	SR	N
M5	0.5	2	5	10	8.1	35	15	3	14	2.7	1.5	7	8	1	定制
M6	0.75	2.5	5	12	9.2	36	15	4	13.5	3.2	1.5	8	10	1.3	定制
M8	1	4	4	15	11.5	40	16	5	14	4	1.5	10	13	2	定制
M8L	1	4	6	15	11.5	42	16	5	14	4	1.5	10	13	2	定制
M10	1	5	5	18	13.8	45	17	5	15	5	2	12	16	2.5	定制
M5	1	5	8	18	13.8	48	17	5	15	5	2	12	16	2.5	定制
M6	1.5	6	6	21	16	54.5	20	6	17	6	2.5	14	19	3	定制
M8	1.5	6	10	21	16	58.5	20	6	17	6	2.5	14	19	3	定制
M8L	1.5	8	7	26	21.5	68	26	8	23	8	3	19	24	4	定制
M10	1.5	8	12	26	21.5	73	26	8	23	8	3	19	24	4	定制

Specification sheet

Customization is available



Self-locking type



M	螺距 粗牙	B	S	D	D1	L	L1	L2	L3	L4	L5	SW1	SW2	SR	N
M5	0.5	2	5	10	8.1	35	15	3	14	2.7	1.5	7	8	1	定制
M6	0.75	2.5	5	12	9.2	36	15	4	13.5	3.2	1.5	8	10	1.3	定制
M8	1	4	4	15	11.5	40	16	5	14	4	1.5	10	13	2	定制
M8L	1	4	6	15	11.5	42	16	5	14	4	1.5	10	13	2	定制
M10	1	5	5	18	13.8	45	17	5	15	5	2	12	16	2.5	定制
M5	1	5	8	18	13.8	48	17	5	15	5	2	12	16	2.5	定制
M6	1.5	6	6	21	16.2	54.5	20	6	17	6	2.5	14	19	3	定制
M8	1.5	6	10	21	16.2	58.5	20	6	17	6	2.5	14	19	3	定制
M8L	1.5	8	7	26	21.9	68	26	8	23	8	3	19	24	4	定制
M10	1.5	8	12	26	21.9	73	26	8	23	8	3	19	24	4	定制

Index Pin

Model:FD-N254



The pull-out pin can be easily inserted into the preset hole position, taking advantage of the tight fit between the pin body and the hole wall.

This accessory is widely used in fields such as mechanical manufacturing, automotive maintenance, and mold assembly.

It is particularly suitable for scenarios that require frequent disassembly and assembly or have high requirements for positioning accuracy. It is an ideal choice to ensure the reliability and flexibility of component connections.



Regular customization

Your Trusted Precision Manufacturing Partner

Spring Plunger

Model:OS-233



Spring plunger,suitable for a variety of applications,such as locking,including.

Positioning,rotation positioning,
and sound positioning.

Component disassembly

The following components are produced separately and then assembled uniformly.。



Beads

Support material customization



Spring

Support elastic customization



Shell

Support material customization



More customized products









