



90° Elbow



Tee

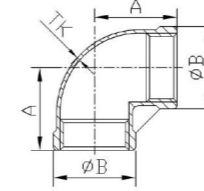


Reduce Tee



Cross

90°Elbow(LB)



Size	1/8"	1/4"	3/8"	1/2"	3/4"	1"	1 1/4"	1 1/2"	2"	2 1/2"	3"	4"
A	16	18	21	25	30	34	40	43.5	53.5	63.5	74	89
B	14	16.5	21	26	32	39.2	47.2	54.5	67	85	97.5	124.5
TK	1.6	1.7	1.5	1.6	1.7	2.1	2.2	2.4	2.7	3.3	2.8	3.8



45° Elbow



Street Elbow

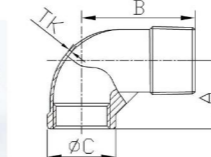


Reduce Elbow



Union F/F

90°Street Elbows(SLB)



Size	1/8"	1/4"	3/8"	1/2"	3/4"	1"	1 1/4"	1 1/2"	2"	2 1/2"	3"	4"
A	18	20	21	22	27	33	38	42	51	64	74	89
B	26	30	31	31	37	46	52	58	67	81	92	108
C	16	1.7	20	26	32	39	47	54.5	67.5	84	96.8	124
TK	2.8	2	2.2	2.2	2.1	2.2	2.5	2.6	2.6	3.3	3	4



45° Elbow



Union SW

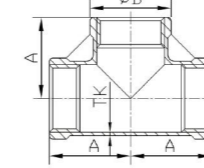


Reduce Banded



Soket Banded

Tees(TB)



Size	1/8"	1/4"	3/8"	1/2"	3/4"	1"	1 1/4"	1 1/2"	2"	2 1/2"	3"	4"
A	16	19	21	25	30	34	40	44	53.5	64	73	93.5
B	14	17	20	26	32	39.2	42	54	67.5	84	97	125.6
TK	1.9	1.5	2.3	1.8	1.9	2.1	2.3	2.4	2.5	3.3	3.3	4.6



Hexagon Bushing



Nipple

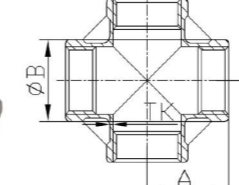


Hexagon Nipple



Reduce Hexagon Nipple

Crosses(+B)



Size	1/8"	1/4"	3/8"	1/2"	3/4"	1"	1 1/4"	1 1/2"	2"	2 1/2"	3"	4"
A	16	18	21	25	30	34	40	44	53.5	64	74	89
B	14	16.5	20	26	32	39	47	54.5	67	84	96.5	124
TK	2	2.3	2.2	1.7	1.8	2.1	2.1	2.1	2.1	3.3	3.3	3.8



Hose Nipple



Barrel Nipple

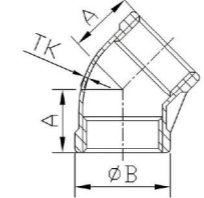


Hose Nipple



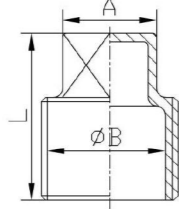
Barrel Nipple

45°Elbows(45°LB)



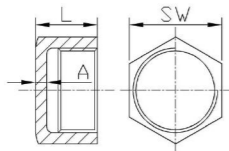
Size	1/8"	1/4"	3/8"	1/2"	3/4"	1"	1 1/4"	1 1/2"	2"	2 1/2"	3"	4"
A	14	16	18	20	25	27	32	33	40	43	50	60
B	14	17.5	21	26	32	39	49	55.2	68	85.5	98	125
TK	2	2	2.2	1.8	1.9	2	2.3	2.3	2.5	3	3	3.8

Square Plug



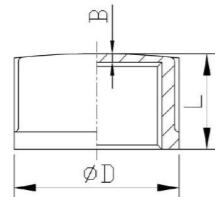
Size	1/8"	1/4"	3/8"	1/2"	3/4"	1"	1 1/4"	1 1/2"	2"	2 1/2"	3"	4"
A	7	8.5	10	11	16	19	21.5	21.3	26.8	32	34	42
L	11	15	16	19	22	25	29.5	30	37	39	44	43
B	0	0	0	15.5	20.5	26.3	35	40.2	50.4	67.6	79.3	101
Note	solid	solid	solid	hollow	hollow	hollow	hollow	hollow	hollow	hollow	hollow	hollow

Hexagon Caps(HCB)



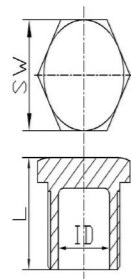
Size	1/8"	1/4"	3/8"	1/2"	3/4"	1"	1 1/4"	1 1/2"	2"	2 1/2"	3"	4"
SW	12.5	15.2	18.7	25	30.7	37.3	46.5	53	64.3	80	92.5	120
L	12.1	15.1	15.5	19	20	23	24	25	29.5	32	34.5	40.5
A	2.4	2.6	3.5	3.7	2.5	3.2	3.3	3.5	3.6	5	4.7	3.8
Square	6	6	6	6	8	8	8	8	8	8	8	8

Round Caps(CB)



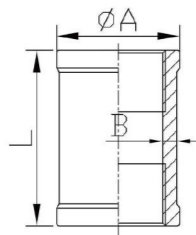
Size	1/8"	1/4"	3/8"	1/2"	3/4"	1"	1 1/4"	1 1/2"	2"	2 1/2"	3"	4"
D	13.5	16.4	20	28	35	40	47.5	53.5	65	82	97.5	122
L	12	15.3	16.3	21	22.2	24	24	30	29.4	32	37	40
B	2.2	2.8	2.5	2.9	3.3	2.2	3	3.8	3.3	3	4.4	4.5

Hexagon Plug



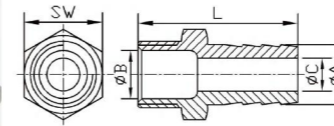
Size	1/8"	1/4"	3/8"	1/2"	3/4"	1"	1 1/4"	1 1/2"	2"	2 1/2"	3"	4"
SW	12	15	18	22	28	36	43.6	50	62	78	92	116
L	14	17	17.8	20.9	25	26.7	30.5	30.6	34.3	39	42	47
ID	0	0	0	15	21	26	35	40.3	51.6	67	78.5	103
Square	6	6	6	6	6	8	8	8	8	8	8	8
Note	solid	solid	solid	hollow	hollow	hollow	hollow	hollow	hollow	hollow	hollow	hollow

Socket Banded



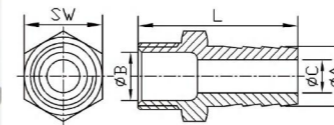
Size	1/8"	1/4"	3/8"	1/2"	3/4"	1"	1 1/4"	1 1/2"	2"	2 1/2"	3"	4"
A	14	16.5	20	26	32	39	47	54.5	67.6	83.3	97	122.5
B	20	22.3	27	31.2	35	40	48	50	58.9	60.8	65.5	79
TK	2	2.4	2.9	1.8	1.9	2.2	2.1	2.5	2.5	2.7	3	3.4

Hose Nipples Long Type (HON)



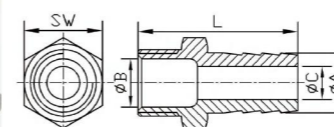
Size	1/8"	1/4"	3/8"	1/2"	3/4"	1"	1 1/4"	1 1/2"	2"	2 1/2"	3"	4"
A	7	9	11	15	20	26	34	40.5	52.5	63.5	76.1	100
SW	11.5	15	18.3	22	28	36	44	50	62	78	91.3	116
L	41	48	48	52.6	61	66	75	82	98.5	116	119.5	127
B	4.3	8	11.3	15.4	20	26.2	35.4	40.2	51	64.7	77	102
C	4.2	5	7	10	15.1	20.4	27.6	33.5	45.5	53.4	66.7	91
Square	6	6	6	6	6	8	8	8	8	8	8	8

Hose Nipples Short Type (HON)



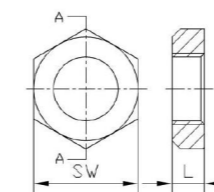
Size	1/4"	3/8"	1/2"	1/2"	1/2"	3/4"	1"
A	11	12	11	13	20	25	27
SW	13.5	17	21.5	21.5	23.5	28.5	36
L	41.5	51.5	47	51.5	56.5	66.5	65
B	9	11	15	15	15	20.4	26
C	7	8.5	7	8.5	15	20.4	22
Square	6	6	6	6	6	6	8

Hose Nipples Short Type (HON)



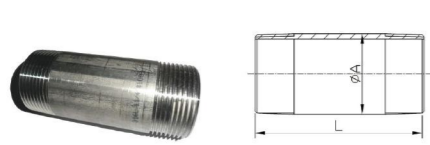
Size	1 1/4"	1 1/2"	2"	2 1/2"	3"	4"
A	34	40.5	52.5	63.5	76.1	100
SW	43.5	50	62	77.5	91.5	115.5
L	66	68.5	82	96.5	105	115
B	35.2	40.4	51.5	64.2	77.3	102.2
C	27.8	33.8	45.7	55	66.8	90.6
Square	8	8	8	8	8	8

Hexgon Nut(LN)



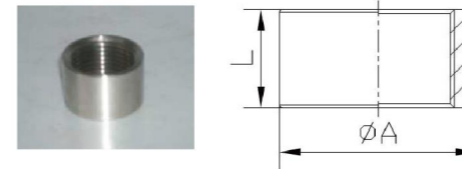
Size	1/8"	1/4"	3/8"	1/2"	3/4"	1"	1 1/4"	1 1/2"	2"	2 1/2"	3"	4"
SW	15	19.2	24	26.5	32	38.5	48	55	68	88.5	101.6	129.5
L	7	6	6.5	8	10	10	11.2	12	13.3	15	17.3	22.3

Barrel Nipples (BN)



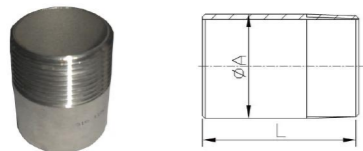
Size	1/8"	1/4"	3/8"	1/2"	3/4"	1"	1 1/4"	1 1/2"	2"	2 1/2"	3"	4"
L	40	40	40	60	60	60	80	80	100	100	120	120
A	10.3	13.7	17.1	21.34	26.67	33.4	42.16	48.26	60.33	76.3	88.9	114.3

Half Couplings (NPT)



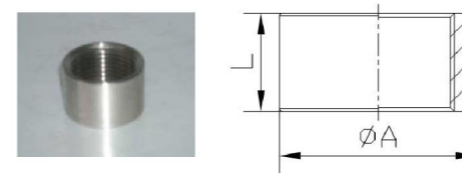
Size	1/8"	1/4"	3/8"	1/2"	3/4"	1"	1 1/4"	1 1/2"	2"	2 1/2"	3"	4"
A	13	17	20	24.2	30.5	38	47	53	65.5	80	95.5	121
L	7.8	9.8	10.5	14.5	15.5	18.8	21.5	21.5	23.7	29.8	31.3	37

Welding Nipples(WN)



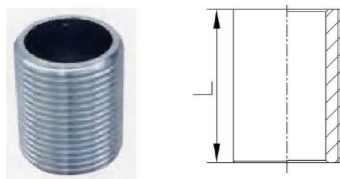
Size	1/8"	1/4"	3/8"	1/2"	3/4"	1"	1 1/4"	1 1/2"	2"	2 1/2"	3"	4"
L	30	30	30	35	40	40	50	50	50	60	70	80
A	10.3	13.7	17.1	21.34	26.67	33.4	42.16	48.26	60.33	76.3	88.9	114.3

Half Couplings (BSP/DIN2999/ISO228)



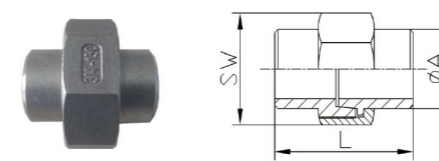
Size	1/8"	1/4"	3/8"	1/2"	3/4"	1"	1 1/4"	1 1/2"	2"	2 1/2"	3"	4"
A	13	17	20	24.2	30.5	38	47	53	65.5	82	94.8	120
L	8	11.5	12	15	17	19	22	22	26	30	33	40

Parrel Nipples(PN)



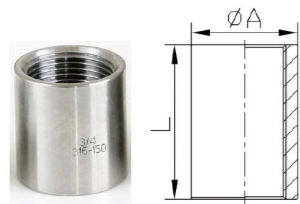
Size	1/8"	1/4"	3/8"	1/2"	3/4"	1"	1 1/4"	1 1/2"	2"	2 1/2"	3"	4"
L (parallel thread)	16	18	22	25	30	35	38	38	45	55	60	70
A (BSPT, NPT thread)	20	24	25	29	32	38	38	44	44	57	64	76

Unions Conical BW



Size	1/8"	1/4"	3/8"	1/2"	3/4"	1"	1 1/4"	1 1/2"	2"	2 1/2"	3"	4"
SW	25.2	30.4	34	37	46	52	64	69.5	85.6	105	117.6	147
A	10.2	13.5	17.2	21.3	27	33.7	42.4	48.2	60.2	76.1	89	114.3
L	33.5	38.5	39.5	45	45	47	52	54	62	67	73	78
Square	8	8	8	8	8	8	10	10	10	10	10	10

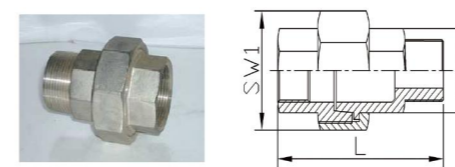
Full Couplings Standard: DIN2986



Size	DN6	DN8	DN10	DN15	DN20	DN25	DN32	DN40	DN50	DN65	DN80	DN100	DN125	DN150
A	14	18.5	21.3	26.4	31.8	39.5	48.3	54.5	66.3	82	95	122	147	174
L	17	25	26	34	36	43	48	48	56	65	71	83	92	92

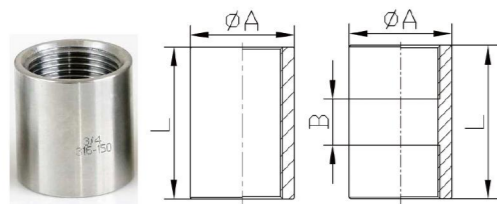
Surface Choice : pipe surface, brushed surface, CNC machining surface.

Unions Conical MF



Size	1/8"	1/4"	3/8"	1/2"	3/4"	1"	1 1/4"	1 1/2"	2"	2 1/2"	3"	4"
SW1	25	30.5	34	37	46	52	64.5	70	86	105	118.2	147
SW2	13	17	20.5	21.6	30	37	46	52	63.5	80	93	117
L	36	42.5	44	53	58	65	71.5	75	88	93	104	111
Square	8	8	8	8	8	8	10	10	10	10	10	10

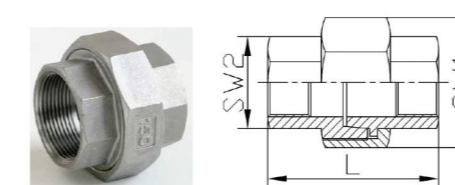
Full Couplings Standard: ISO4144



Size	Thread	1/8"	1/4"	3/8"	1/2"	3/4"	1"	1 1/4"	1 1/2"	2"	2 1/2"	3"	4"
A	DIN299 9/IS	13	17	20	24.2	30.5	37.5	46.5	53	65.6	82	95	120
L	O228/B SPT	17	23.5	24.5	32	34.7	41	45	45	54	63	69	76
A	NPT	13	17	20	24.2	30.5	37.5	46.5	53	65.5	80	95.5	121
L		17	23.5	24.5	32	34.7	41	45	45	54	63	66.5	74
B		3	3	3	3	3	4	4	4	4	5	5	5

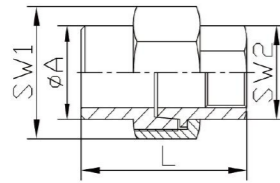
Surface Choice : pipe surface, brushed surface, CNC machining surface.

Unions Conical F/F



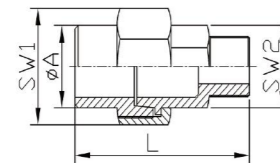
Size	1/8"	1/4"	3/8"	1/2"	3/4"	1"	1 1/4"	1 1/2"	2"	2 1/2"	3"	4"
SW1	25	30.5	34	37	46	52	64.5	70	86	105	118.5	147
SW2	13	17	20.5	21.6	30	37	46	52	63.5	80	93	117
L	26.5	32	34	38	42.5	46.5	52	53	63	73	78.5	87
Square	8	8	8	8	8	8	10	10	10	10	10	10

Unions conical BW/F



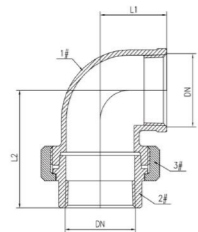
Size	1/8"	1/4"	3/8"	1/2"	3/4"	1"	1 1/4"	1 1/2"	2"	2 1/2"	3"	4"
SW1	25	30.5	34	37	46	52	64	70	86	105	117.6	147
SW2	13	17	20.5	24.5	30	37	46	52	63.5	80	93	117
A	10.2	13.5	17.2	21.3	27	33.7	42.4	48.3	60.2	76.1	89	114.3
L		37	37	40	43.5	46.5	52	53.5	61			
Square	8	8	8	8	8	8	10	10	10	10	10	10

Unions conical BW/M



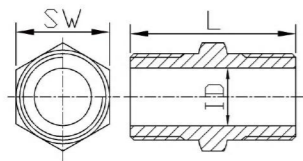
Size	1/8"	1/4"	3/8"	1/2"	3/4"	1"	1 1/4"	1 1/2"	2"	2 1/2"	3"	4"
SW1	25.2	30.5	34	37	46	52	64	70	86	105	117.6	147
SW2	13	17	20.5	24.5	30	37	46	52	63.5	80	93	117
A	10.2	13.5	17.2	21.3	27	33.7	42.4	48.3	60.3	76.1	89	114.3
L		47.5	47	55	59	65	71.5	76	88			
Square	8	8	8	8	8	8	10	10	10	10	10	10

Union Elbow Conical F/F



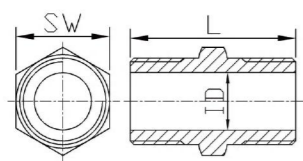
Size	1/2"	3/4"	1"	1 1/4"	1 1/2"	2"
L1	25.2	30.5	34	37	46	52
L2	13	17	20.5	24.5	30	37

Hexagon Nipples (HN, Heavy type)



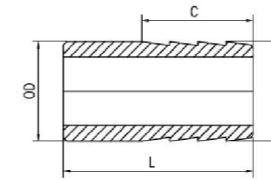
Size	1/8"	1/4"	3/8"	1/2"	3/4"	1"	1 1/4"	1 1/2"	2"	2 1/2"	3"	4"
SW	12	14.5	17.5	22.6	27.7	36	43.5	50	63	77.5	91.5	116
L	23.2	25	28.5	37	41	45.4	50	53.3	61	72	77	83
ID	5.6	9	11.2	14.7	20	26.6	35	40	50	64.3	77.3	101
Square	6	6	6	6	6	8	8	8	8	8	8	8

Hexagon Nipples ISO4144 (HN)



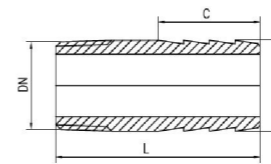
Size	1/8"	1/4"	3/8"	1/2"S	3/4"S	1"S	1 1/4"S	1 1/2"S	2"S	2 1/2"S	3"S	4"S
SW	12	14.5	17.5	22.6	27.7	34	43	48.5	61.2	77.5	91.5	116
L	23.2	25	28.5	34.5	37	42	47.5	47.5	57	61	67.5	80
ID	5.6	9	11.2	15.6	20.7	27	35	40.7	51.7	66.5	78.5	103
Square	6	6	6	6	6	10	10	10	10	10	10	10

Simple Hose Nipple



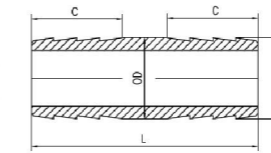
Size	1/8"	1/4"	3/8"	1/2"	3/4"	1"	1 1/4"	1 1/2"	2"	2 1/2"	3"	4"
OD	10	13.72	17.15	21.34	26.67	33.4	42.16	48.26	60.33	76.2	88.9	114.3
ΦA	9.9	13.5	16.95	21.1	26.45	33.1	41.85	47.92	60	75.9	88.5	113.9
C	16	24	24	24	32	32	32	32	32	45	60	70
L	32	38	40	45	60	60	65	65	65	90	100	110

Male Hose Nipple



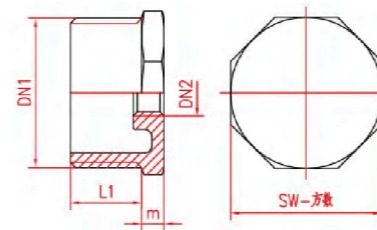
Size	1/8"	1/4"	3/8"	1/2"	3/4"	1"	1 1/4"	1 1/2"	2"	2 1/2"	3"	4"
ΦA	9.9	13.5	16.95	21.1	26.45	33.1	41.85	47.95	60	75.9	88.5	113.9
C	16	24	24	24	32	32	32	32	32	45	60	70
L	34	42	47	50	60	62	63	65	70	105	120	140

Double Hose Nipple



Size	1/8"	1/4"	3/8"	1/2"	3/4"	1"	1 1/4"	1 1/2"	2"	2 1/2"	3"	4"
OD	10	13.72	17.15	21.34	26.67	33.4	42.16	48.26	60.33	76.2	88.9	114.3
ΦA	9.9	13.5	16.95	21.1	26.45	33.1	41.85	47.92	60	75.9	88.5	113.9
C	16	24	24	24	32	32	32	32	32	45	60	70
L	45	50	55	60	70	75	90	90	95	120	150	170

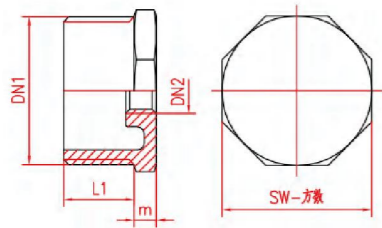
Hex. Bushing ISO4144 Type (HB)



DN1 × DN2	m	L1	SW
1 1/2" × 1 1/2"	6.5	20.5	49
1 1/2" × 3/4"	6.5	20.5	49
1 1/2" × 1"	6.5	20.5	49
1 1/2" × 1 1/4"	6.5	20.5	49
2" × 1 1/2"	7	25	62
2" × 3/4"	7	25	62
2" × 1"	7	25	62
2" × 1 1/4"	7	25	62
2 1/2" × 1"	7	27	34
2 1/2" × 1 1/4"	7	27	34
2 1/2" × 1 1/2"	7	27	34

DN1 × DN2	m	L1	SW
2 1/2" × 2"	7	27	34
3" × 1"	7.5	30	37.5
3" × 1 1/4"	7.5	30	37.5
3" × 1 1/2"	7.5	30	37.5
3" × 2"	7.5	30	37.5
3 1/2" × 2"	7.5	30	37.5
4" × 1 1/2"	8	36	44
4" × 2"	8	36	44
4 1/2" × 2"	8	36	44
4" × 3"	8	36	44

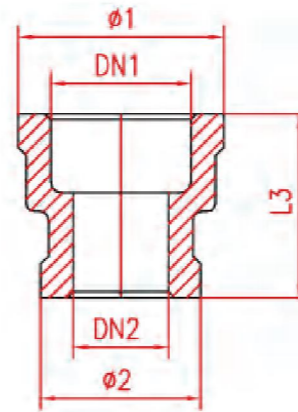
Hex. Bushing Heavy Type (HB)



DN1 × DN2	m	L1	SW
1/4"×1/8"	4	11	15
3/8"×1/8"	3.5	11.5	17.5
3/8"×1/4"	5	12.7	18.5
1/2"×1/8"	4.8	15.2	22.5
1/2"×1/4"	4.8	15.4	22.5
1/2"×3/8"	4.8	15.1	22.5
3/4"×1/4"	5.7	16.6	28
3/4"×3/8"	5.8	16.7	28.3
3/4"×1/2"	5.6	16.9	28.5
1"×1/4"	6.8	19	34.8
1"×3/8"	6.8	19	34.8
1"×1/2"	7	18.9	34.8
1"×3/4"	7.2	18.8	35
1 1/4"×1/2"	8.5	20.5	44
1 1/4"×3/4"	8.5	20.3	43.4
1 1/4"×1"	8.4	20.6	43.9
1 1/2"×1/2"	8	21.5	48.8
1 1/2"×3/4"	8.5	21.5	49
1 1/2"×1"	8.4	21.6	49

DN1 × DN2	m	L1	SW
1 1/2"×1 1/4"	8.2	21.8	49
2"×1/2"	8.2	25.6	62
2"×3/4"	8.4	25.2	62
2"×1"	8.4	25.6	61.8
2"×1 1/4"	8.5	25.5	62.5
2"×1 1/2"	8.8	25.4	62.3
2 1/2"×1"	10.8	28	78.3
2 1/2"×1 1/4"	10.5	28.2	77.8
2 1/2"×1 1/2"	10.7	28.1	78.3
2 1/2"×2"	10.8	28.2	78
3"×1"	10.8	30	89.5
3"×1 1/4"	10.8	30	89.5
3"×1 1/2"	11	29.7	89.7
3"×2"	12	28.5	89.8
3 1/2"×2"	11.8	30.2	92.5
4"×1 1/2"	12	35.8	116.2
4"×2"	12	35.6	115.7
4 1/2"×2"	12	35.6	115.7
4"×3"	13	34.8	115.8

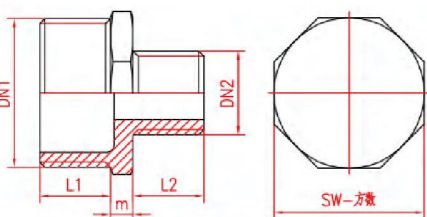
Reduce Socket Banded (RSB)



DN1 × DN2	Φ1	Φ2	L3
1/4"×1/8"	17.1	14	21.1
3/8"×1/4"	22	14.5	25
3/8"×1/8"	22	17	28.1
1/2"×1/4"	26.5	17.3	29.1
1/2"×3/8"	26.1	21	31.7
3/4"×1/4"	32	17	30.8
3/4"×3/8"	32.2	21	33.4
3/4"×1/2"	32.1	27	36.6
1"×1/4"	40	17.2	33
1"×1/2"	39.6	21.2	35.5
1"×3/8"	38.77	26	36.5
1"×3/4"	39.5	32	40
1 1/4"×1/2"	46.1	25	41.2
1 1/4"×3/4"	49	32	42.4
1 1/4"×1"	48.9	39	43.2
1 1/2"×1/2"	55.2	26.3	38.2
1 1/2"×3/4"	52.3	30.8	42

DN1 × DN2	Φ1	Φ2	L3
1 1/2"×1"	55.2	38.5	43
1 1/2"×1 1/4"	55.3	48.5	46
2"×1 1/4"	64.4	25.3	45.5
2"×3/4"	64.5	30.8	45.5
2"×1"	66.3	38.7	49.2
2"×1 1/2"	68.9	49.2	51.2
2 1/2"×1"	67	55.5	51.5
2 1/2"×1 1/4"	82.3	47	53
2 1/2"×1 1/2"	82.2	53	53
2 1/2"×2"	85	65.75	58.3
3"×2"	93.5	66	60
3"×2 1/2"	95.5	81.9	63.3
3"×2 1/2"	95.5	82.2	72
4"×2"	123.5	68.4	68
4"×2 1/2"	124	83.3	68.2
4"×3"	124	97.7	95.5

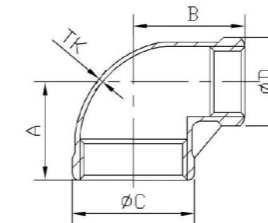
Red.Hex.Nipple (RHN)



DN1 × DN2	m	L1	L2	SW
1/4"×1/8"	5.7	12.1	9.3	15
3/8"×1/8"	5.7	12.2	9.1	18.5
3/8"×1/4"	6	12	12	18.5
1/2"×1/8"	5.5	14.5	8.8	22
1/2"×1/4"	5.8	14.5	11.7	22
1/2"×3/8"	5.5	14.6	12.3	22.5
3/4"×1/4"	6	15.5	11.3	28
3/4"×3/8"	6.6	16.6	13	28.4
3/4"×1/2"	6.3	17	14.5	28.4
1"×1/4"	8.8	19.2	12	35
1"×3/8"	7.2	18.8	12.8	35.3
1"×1/2"	6.3	19	15	34.5
1"×3/4"	7	18.3	16.6	35.2
1 1/4"×3/8"	7.5	20.2	12	44
1 1/4"×1/2"	7.8	20.2	15	44.2
1 1/4"×3/4"	7.7	20.5	16.8	44
1 1/4"×1"	7.8	20.5	18.3	44

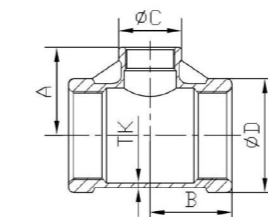
DN1 × DN2	m	L1	L2	SW
1/4"×1/8"	5.7	12.1	9.3	15
3/8"×1/8"	5.7	12.2	9.1	18.5
3/8"×1/4"	6	12	12	18.5
1/2"×1/8"	5.5	14.5	8.8	22
1/2"×1/4"	5.8	14.5	11.7	22
1/2"×3/8"	5.5	14.6	12.3	22.5
3/4"×1/4"	6	15.5	11.3	28
3/4"×3/8"	6.6	16.6	13	28.4
3/4"×1/2"	6.3	17	14.5	28.4
1"×1/4"	8.8	19.2	12	35
1"×3/8"	7.2	18.8	12.8	35.3
1"×1/2"	6.3	19	15	34.5
1"×3/4"	7	18.3	16.6	35.2
1 1/4"×3/8"	7.5	20.2	12	44
1 1/4"×1/2"	7.8	20.2	15	44.2
1 1/4"×3/4"	7.7	20.5	16.8	44
1 1/4"×1"	7.8	20.5	18.3	44

Crosses(+B)



1/2"×3/8"	1/2"×1/4"	3/4"×1/2"	3/4"×3/8"	3/4"×1/4"	1"×3/4"
1"×1/2"	1"×3/8"	1"×1/4"	1 1/4"×1"	1 1/4"×3/4"	1 1/4"×1/2"
1 1/2"×1 1/4"	1 1/2"×1"	1 1/2"×3/4"	1 1/2"×1/2"	2"×1 1/2"	2"×1 1/4"
1 1/2"×1"	1 1/2"×3/4"	1 1/2"×1/2"			

45°Elbows(45°LB)



1/2"×3/8"	1/2"×1/4"	3/4"×1/2"	3/4"×3/8"	3/4"×1/4"	1"×3/4"
1"×1/2"	1"×3/8"	1"×1/4"	1 1/4"×1"	1 1/4"×3/4"	1 1/4"×1/2"
1 1/2"×1 1/4"	1 1/2"×1"	1 1/2"×3/4"	1 1/2"×1/2"	2"×1 1/2"	2"×1 1/4"
1 1/2"×1"	1 1/2"×3/4"	1 1/2"×1/2"			