



# Interactive Flat Panel

Android 14.0

EIBOARD interactive flat panel is an all-in-one smart board supporting Android and Windows operating system, widely used in education and business to enhance learning and collaboration, allowing for more dynamic and engaging presentations.

It adopts infrared touch and zero-gap bonding technology, enhance the writing accuracy and faster respond that makes a better user experience.



Official Website



## 4K Original Panel

Zero-bonding makes writing more accurate, with A grade 4K touch panel.



## Superb System

Latest 8-core system Android 14.0 with storage 8G + 128G



## Wireless Screen Share

Wireless screen share up to 9 devices connected (IOS,Android, Windows).



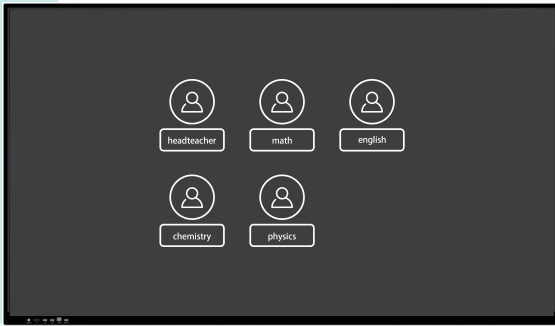
## OTA Update

Providing OTA firmware and software feature updates.



## Customization

Support OEM,ODM, SKD and other customization accordingly.



## Multiple User Logins

It supports 1 manage user and 4 ordinary users, to easily enter to different subject user space when the system is on.

## Multi Users & Convenient Presentation

Smart writing interactive whiteboard supports 20/40 points finger touch, with easy annotation and gesture eraser.



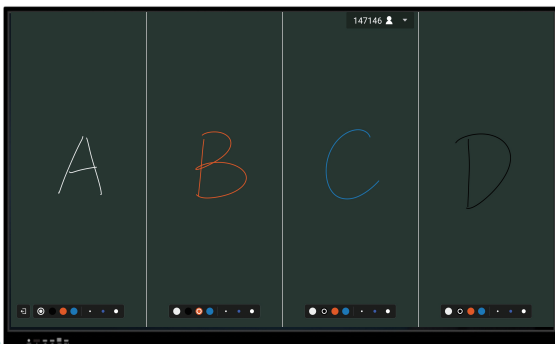
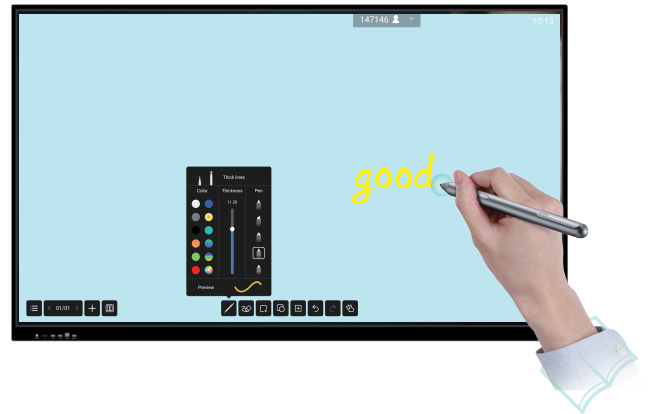
0.5 mm Accuracy



0.006 S Response speed



Gesture Eraser

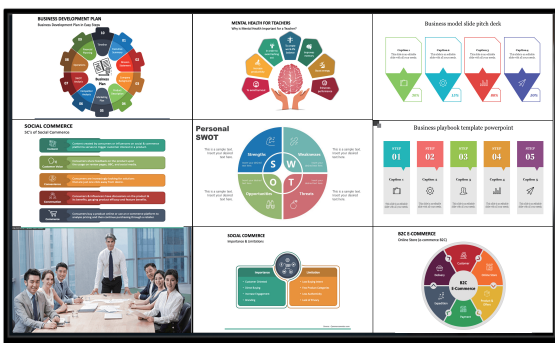
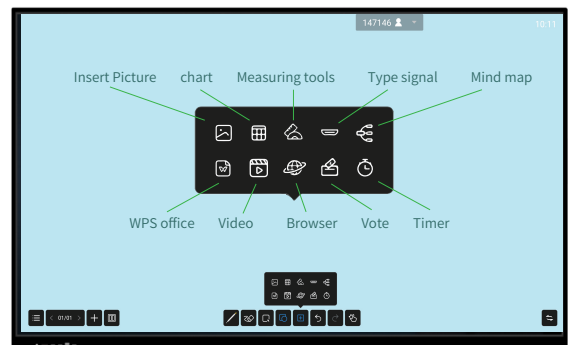


## Multi Screen Writing

It supports split screen writing, two screen, three screen and four screen options for writing in different color simultaneously.

## Multi Tools

Multifunctional and popular tools included in the whiteboard software, eg. insert pictures, chart, math tool, mind map, vote etc..



## Wireless Screen Share

9 users screen share simultaneously supported. It supports to share local screen to selected members in group, also supports reverse control of local screen and annotation.



## General Technical Parameters

LCD Panel	Screen Size	65"
	Screen Type	DLED
	Resolution	3840(H)×2160(V) (UHD)
	Color	10 bit 1.07B
	Active Size	1428.48*803.52mm
	Brightness	400cd/m2
	Contrast	5000:1 (according to panel brand)
	Viewing Angle	178°
	AG Glass	Tempered anti-glare glass surface
	Backlight Lifetime	60000 hours
Electrical performance	Max Power	≤250W
	Standby Power	≤0.5W
	Voltage	110-240V(AC), 50/60Hz
Touch	Touch Technology	IR touch; 20 points; HIB Free drive
	Touch Items	Finger, Pen, any opaque objects
	Response Speed	≤ 6ms
	Operation System	Support Windows, Android, Mac OS, Linux
System	Android 14.0	
Processor	CPU: Cortex-A55 * 8 Cores, 1.2GHz; GPU:Arm Mali-G52 MP2	
Storage	RAM 8GB, ROM 128G	
Network	LAN/WiFi 2.4G+5G, Bluetooth 5.0	
Speakers	Power	15W*2 / 8Ω
Working Environment	Working Temperature	0°C ~ 40°C
	Storage Temperature	- 20°C ~ 60°C
	Working Humidity	10%-90% non-condensing
Accessories	Power cable*1 pcs; Remote controller*1 pcs; Touch pen*2 pcs; QC&Warranty card*1 pcs;Wall mount brackets*1 pcs;	
	HDMI cable, USB cable	
I/O Interfaces	Input Ports: RS232*1, TOUCH USB*1, USB*2, HDMI*1,Earphone*1, LAN IN*1 Output Ports: AV OUT*1, Coaxial OUT*1, HDMI OUT *1 Front Ports: USB*2, TOUCH USB*1, HDMI*1 Other ports: DP*1 , TF*1, OPS slot *1	
Software Apps	Whiteboard, Screen share, File manager, Play Store, Screen record, WPS Office, Browser, Calender, Calculator, Timer, VoteKit, Gallery, etc..	

## Options for Windows System

OPS Type	OPS-C ; 80-Pin
Dimension	195*180*30mm (Dual HDMI)
CPU	Intel I3-1315U, 13th Generation
Memory	8G DDR4
Storage	128G SSD M.2
System	Windows 11 Pro 64 bit License (Factory Loaded)

## Product Dimension

Items / Model No.	FC-65LED ( IA Series )
Packing dimension	1610*1020*190mm
Product dimension	1488.4*892*91.55mm
Wall mount VESA	400*400mm
Weight(N.W/G.W)	38Kgs/45Kgs