

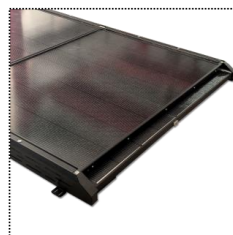
## LIGHT WING SERIES EXPANDABLE SOLAR PANELS

The expandable solar panel is a new installation method that increases the number of panels in limited space and boosts power output. It features a multi-layer design for various expansion options and is ideal for vehicles, mobile homes, and off-grid systems.

Hotian New Energy's second-generation lightweight expandable solar panels uses the conventional solar panel with tempered glass on top to resist hail and debris. The lower layer can be equipped with the patented product of Hotian New Energy: the Dream Series lightweight solar panels, reducing overall weight. The aluminum frame is 30% lighter than the first generation.

### FEATURES

- It supports electric, manual, or combined telescopic methods for convenience and versatility.
- The electric mechanism uses industrial-grade worm gear motors with self-locking, adjustable speed, reversible rotation, and stable performance even after 5,000+ cycles.
- Ball screws ensure smooth movement and reduce jamming risks.
- Heavy-duty slide rails provide wind and shock resistance, ensuring stability.
- The 2.4G remote control minimizes interference from external signals.
- L-shaped corner connectors allow height adjustments and secure installation.
- The aluminum alloy frame is lightweight and strong.
- Optional Dream Series solar panels are 50% lighter and Higher seismic resistance performance.



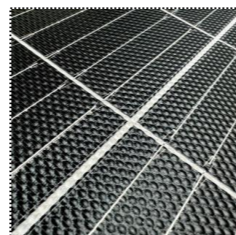
Telescopic structure



Screw fixation



Diversion plate



Lightweight solar panels

### EXPANSION METHODS

- One-to-One: One upper component fixed, one expansion component extends to one side.
- One-to-Two: One upper component fixed, two expansion components extend to both sides.
- One-to-Four: One upper component fixed, four expansion components extend to all four sides.
- Two-to-Two: Two upper components fixed, two expansion components extend to both sides.

### CONTROL METHODS

- Electric control (controlled by remote control or electronic switch)
- Manual control (pure manual control or manual plus electric)

Parameter name	Parameter
Product Name	Second-generation lightweight retractable solar panels
Model	Light Wing S2000A/2-2(1460W)
Telescopic mode	Two-to-Two
Control mode	Remote control & Manual control
Fully retracted size.	2500mm*1620mm*150mm
Fully expanded size	4600mm*1620mm*150mm
Weight	95Kg
Fully retracted power	730W
Fully expanded power	1460W
Number of solar panels	4 PCS (The same specification)
Battery voltage compatibility	12V,24V(Step-down charging) 48V,60V,72V (Boost charging)
Installation method	L-shaped corner connector screw installation
Parameters of a single battery panel STC : Irradiance 1000 W/m <sup>2</sup> , module temperature 25°C, AM 1.5	
Standard power	365W
Peak voltage	24.81V
Peak Current	14.71A
Open Circuit Voltage	30.2V
Short Circuit Current	16.18A
Size	1500*1100*40mm
Net Weight	19Kg(Conventional solar panel) 9.7Kg(Dream Series lightweight solar panel)
System Voltage	DC1000V
Power Error Range	±2%
IP Grade	IP67
OTR	- 40°C — +80°C
TkPower	- 0.38%/°C
TkVoltage	- 0.36%/°C
TkCurrent	+0.06%/°C