

ONPOW71 系列金属钮子开关

series metal toggle switch ALL NEW

支持三色带灯的小型防水金属钮子开关

Miniature waterproof metal toggle switch supporting tri-color lights

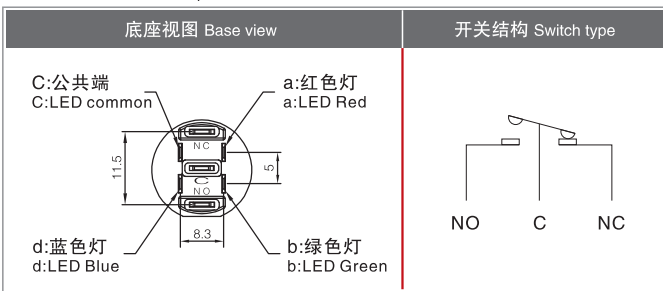
- 超平头部设计，简洁不简单
Ultra-flat head design, simple and elegant
- 使用高强度金属壳体及钮柄，保证使用品质
Use high-strength metal shell and button handle to ensure quality
- 具备良好的“耐震动、防水、耐高低温”性能
Vibration-resistant, waterproof, high and low temperature resistant
- 标配三色带灯(共阴)，搭配线路板可实现三色切换
Tri-color switching can be achieved with the circuit board
- 产品可搭配金属按钮开关，提升面板整体“颜值”
Matching metal button switch makes the panel more upscale



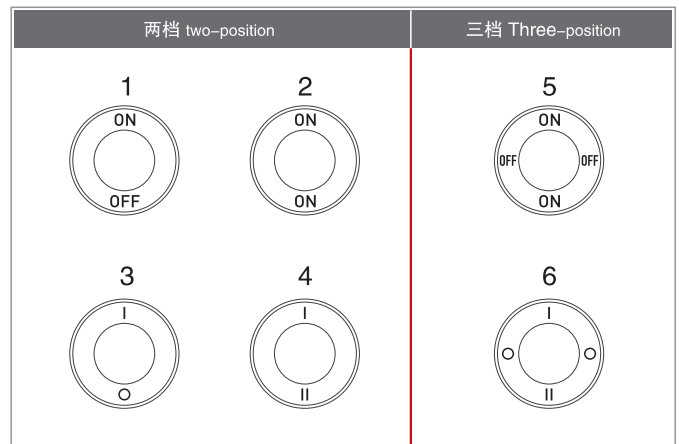
性能特征 Performance characteristic

工作环境温度 Operating temperature	-40°C~+85°C(无冰冻)开关本体周围必须空气流通 -40°C~+85°C(No freezing), keep the air flowing around	工作环境湿度 Operating humidity	45~85%RH(无结露) 45~85%RH(Non condensing)
初始接触电阻 Initial contact resistance	≤50mΩ	绝缘电阻 Insulation resistance	≥1000MΩ(500VDC)
工频耐压 Power frequency withstand voltage	1500V(AC 50Hz), 1min	耐振动性 Vibration resistance	30~50~30Hz, 振幅0.15mm 30~50~30Hz, Amplitude 0.15mm
耐焊锡热 Resistant to soldering heat	320°C, 3s	开关额定值 Switch rating	15A/250V(AC-12) 5A/250V(AC-15)
机械寿命 Mechanical life	50万次以上 ≥500000 cycles	电气寿命 Electrical life	5万次以上 ≥50000 cycles
基座材料 Base material	PA(V0)	尾部配置 Terminal type	接线插片(2.8×0.5mm) Pin terminal(2.8×0.5mm)
螺母扭矩 Torque	约0.6N·m About 0.6N·m	操作力 Operating force	约3N About 3N
拨动角度 Operating angle	24°	面板前端防护等级 Front panel protection degree	IP67

底座说明 Base Description



激光图案选型表 Laser Pattern Selection Table



注:请在型号中填写对应的数字(其他图案可定制).
Note: Please fill in the corresponding number for the model (other patterns can be customized).

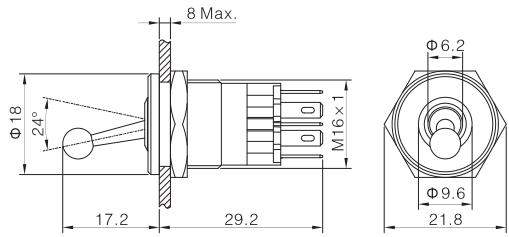
灯珠规格 LED Specifications

LED 寿命 LED life	电流 Current	电压波动范围 Voltage fluctuation range	电路图 Circuit diagram
≥40000 h	<20mA	±10%	<p>共阴(默认) Common cathode(default) 共阳(定制) Common anode(customized)</p>

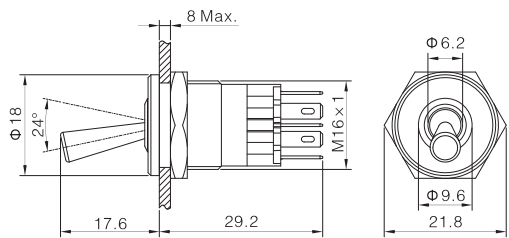
产品图样 Shape 规格参数 Specification 外形尺寸 Dimension



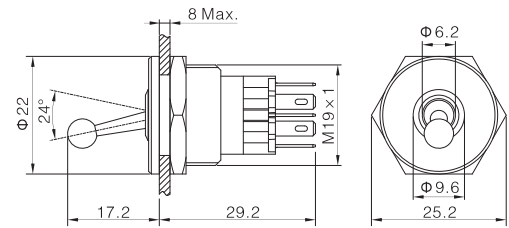
开关组合 Contact structure 1NO1NC
 激光图案□ Laser pattern 参考激光图案选型表 Reference laser pattern selection table
 操作类型■ Operation mode 2:两档 2:two-position
 带灯结构★ Lamp structure 41: 三色共阴(默认) 42: 三色共阳(定制) 41: Common cathode 42: Common anode
 带灯颜色 Lamp color **R G B**
 带灯电压▲ Lamp voltage 6V / 12V / 24V(DC)
 外壳材料◎ Crust material S:不锈钢 / A:黄铜镀黑 S:Stainless steel / A:Black plated brass
 防护等级 Protection degree IP67



开关组合 Contact structure 1NO1NC
 激光图案□ Laser pattern 参考激光图案选型表 Reference laser pattern selection table
 操作类型■ Operation mode 2:两档 2:two-position
 带灯结构★ Lamp structure 41: 三色共阴(默认) 42: 三色共阳(定制) 41: Common cathode 42: Common anode
 带灯颜色 Lamp color **R G B**
 带灯电压▲ Lamp voltage 6V / 12V / 24V(DC)
 外壳材料◎ Crust material S:不锈钢 / A:黄铜镀黑 S:Stainless steel / A:Black plated brass
 防护等级 Protection degree IP67



开关组合 Contact structure 1NO1NC
 激光图案□ Laser pattern 参考激光图案选型表 Reference laser pattern selection table
 操作类型■ Operation mode 2:两档 2:two-position
 带灯结构★ Lamp structure 41: 三色共阴(默认) 42: 三色共阳(定制) 41: Common cathode 42: Common anode
 带灯颜色 Lamp color **R G B**
 带灯电压▲ Lamp voltage 6V / 12V / 24V(DC)
 外壳材料◎ Crust material S:不锈钢 / A:黄铜镀黑 S:Stainless steel / A:Black plated brass
 防护等级 Protection degree IP67



开关组合 Contact structure 1NO1NC
 激光图案□ Laser pattern 参考激光图案选型表 Reference laser pattern selection table
 操作类型■ Operation mode 2:两档 2:two-position
 带灯结构★ Lamp structure 41: 三色共阴(默认) 42: 三色共阳(定制) 41: Common cathode 42: Common anode
 带灯颜色 Lamp color **R G B**
 带灯电压▲ Lamp voltage 6V / 12V / 24V(DC)
 外壳材料◎ Crust material S:不锈钢 / A:黄铜镀黑 S:Stainless steel / A:Black plated brass
 防护等级 Protection degree IP67

