


Short body latching button **ONPOW63 Series**

- Mounting hole diameter: $\Phi 12$
- Switch characteristics: slow-action / single-throw
- Product features: Product features: innovative 12mm "short body self-locking" structure. Suitable for all kinds of scenes; more comfortable high flat keys, in line with the use of habits
- Protection grade: IP65/IP67.



ONPOW63 Series model description

ONPOW63 ☆ ★ - □ ◇ / J / △ / ▲ / ○ / ※



Symbol	Symbol name	Specify
☆	Panel cutout dimension	12: $\Phi 12\text{mm}$ / $\Phi 8, 10, 16, 19, 22, 25\text{mm}$ is under development
★	Front shape	H: High Round / F: Flat Round / B: Spherical
□	Contact structure	10: 1NO / No letter means indicator
■	Operation type	Z: Latching / No letter means Momentary
◇	Lamp type	E:  Ring / No letter means without lamp
◆	Connect type	J: Pin terminal
△	Lamp color	R: Red / G: Green / Y: Yellow / B: Blue / W: White
▲	Lamp voltage	6V / 12V ~24V with internal resistor, Other voltage levels can be customized and need to connect external resistors
○	Shell material	S: stainless steel / A: Aluminium alloy(black)
※	IP Degree	No letter means IP65 / FP: IP67

Note: please carefully read the specific description of the product and select the corresponding code in the table according to different symbols.

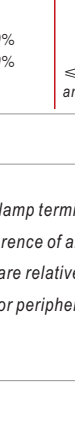
Performance Characteristic

Operating temperature	-25 ~ + 55°C (no freezing) keep the air flowing around illuminated push button
Operation Humidity	45~85%RH (no condensation)
Contact Resistor	$\leq 50\text{m}\Omega$
Insulation Resistor	$\geq 100\text{M}\Omega(500\text{VDC})$
Maximum withstand voltage	1500V, 50Hz AC, 1min
Vibration Resistance	50Hz, Amplitude 1.2mm
Solder-resistant heat	320°C 3s
Switch rating	2A/36VDC
Mechanical Life	$\geq 1000\text{K}$ cycles
Electrical Life	$\geq 50\text{K}$ cycles
Base material	PA
Nut torque	about 0.3Nm
Operation Pressure	around 2.5N
Operation Travel	around 2.4mm
Protecting level	IP65(IP67 can be made), IK07

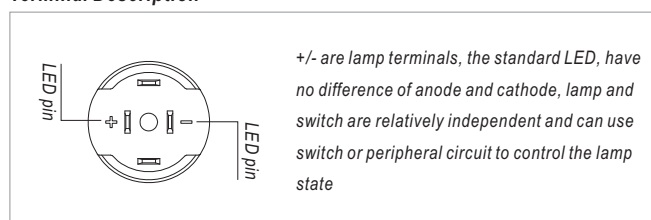
Switching Operation

Type	Diagram	Sign
X		

Lamp ratings

LED Life	Rated Current	Voltage fluctuation	Lamp Circuit Diagram
≥ 40000 hours	$\leq 15\text{mA}$	DC: 10% AC: 20%	 $\leq 24\text{V}$, Use inner protection resistors and no positive or negative distinction.

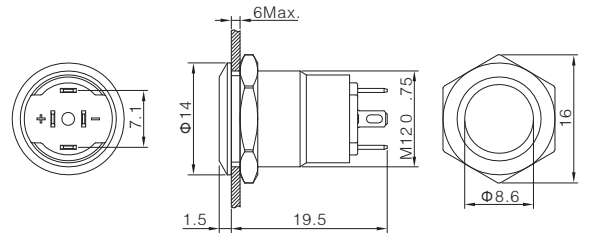
Terminal Description



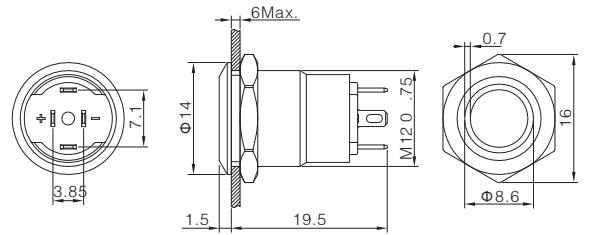
Product Picture	Description	Dimension
-----------------	-------------	-----------



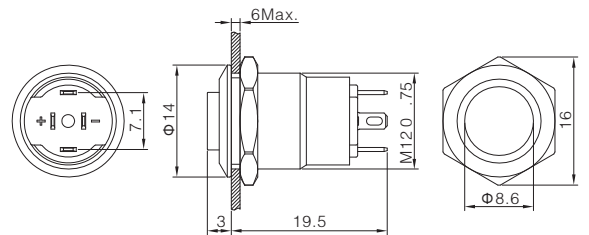
Contact structure 1NO
Operation type ■ Z: Latching / No letter means momentary
Shell material Stainless steel
Tail configuration Terminal pins(2*0.5mm)
IP degree ※ No letter means IP65 / FP: IP67
Applicable accessory M12-12F



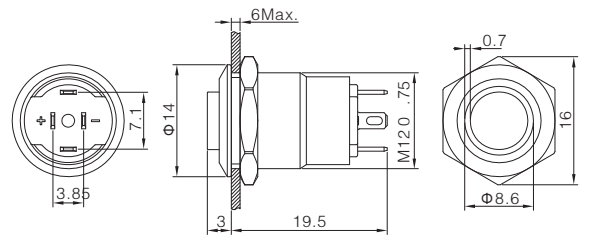
Contact structure 1NO
Operation type ■ Z: Latching / No letter means momentary
LED color ▲ R G Y B W
LED voltage ▲ 6V / 12V ~ 24V
Shell material Stainless steel
Tail configuration Terminal pins(2*0.5mm)
IP degree ※ No letter means IP65 / FP: IP67
Applicable accessory M12-12F



Contact structure 1NO
Operation type ■ Z: Latching / No letter means momentary
Shell material Stainless steel
Tail configuration Terminal pins(2*0.5mm)
IP degree ※ No letter means IP65 / FP: IP67



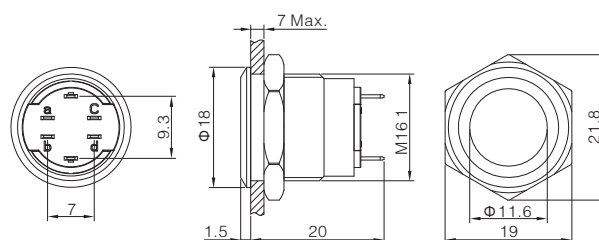
Contact structure 1NO
Operation type ■ Z: Latching / No letter means momentary
LED color ▲ R G Y B W
LED voltage ▲ 6V / 12V ~ 24V
Shell material Stainless steel
Tail configuration Terminal pins(2*0.5mm)
IP degree ※ No letter means IP65 / FP: IP67





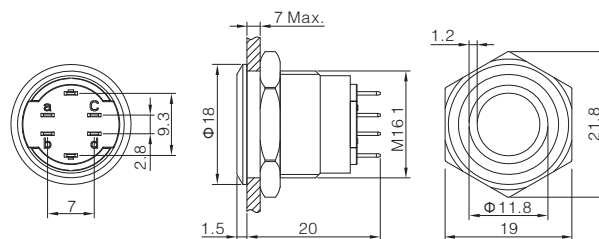
Flat Round
ONPOW6316F-10 ■/J/S/※

Contact structure 1NO
 Operation type ■ Z: Latching / No letter means momentary
 Shell material Stainless steel
 Tail configuration Terminal pins(2*0.5mm)
 IP degree ※ No letter means IP65 / FP: IP67
 Applicable accessory M12-16F



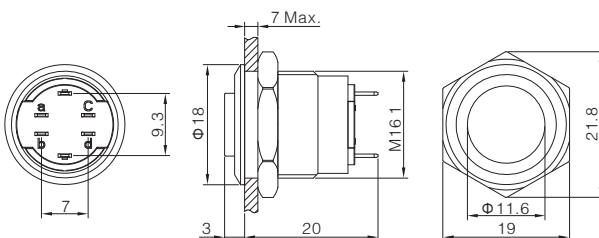
Ring-illuminated
ONPOW6316F-10 ■/E/J/△/▲/S/※

Contact structure 1NO
 Operation type ■ Z: Latching / No letter means momentary
 LED color △ R G Y B W
 LED voltage ▲ 6V / 12V~24V
 Shell material Stainless steel
 Tail configuration Terminal pins(2*0.5mm)
 IP degree ※ No letter means IP65 / FP: IP67
 Applicable accessory M12-16F



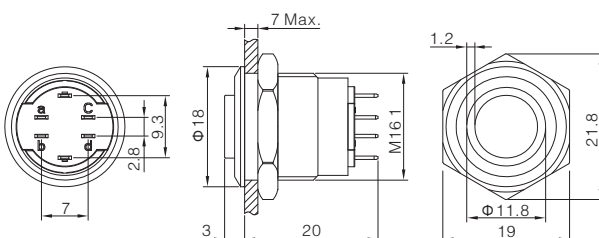
High Round
ONPOW6316H-10 ■/J/S/※

Contact structure 1NO
 Operation type ■ Z: Latching / No letter means momentary
 Shell material Stainless steel
 Tail configuration Terminal pins(2*0.5mm)
 IP degree ※ No letter means IP65 / FP: IP67
 Applicable accessory M12-16H



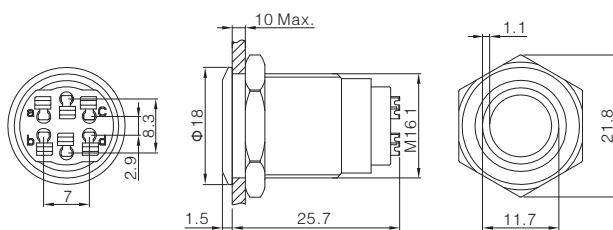
High Head Ring-illuminated
ONPOW6316H-10 ■/E/J/△/▲/S/※

Contact structure 1NO
 Operation type ■ Z: Latching / No letter means momentary
 LED color △ R G Y B W
 LED voltage ▲ 6V / 12V~24V
 Shell material Stainless steel
 Tail configuration Terminal pins(2*0.5mm)
 IP degree ※ No letter means IP65 / FP: IP67
 Applicable accessory M12-16H



Ring-illuminated
ONPOW6316F-10 ■/J/S/※

Contact structure 1NO
 Operation type ■ Z: Latching / No letter means momentary
 LED color △ R G Y B W
 LED voltage ▲ 6V / 12V~24V
 Shell material Stainless steel
 Tail configuration Quick-connect type socket
 IP degree ※ No letter means IP65 / FP: IP67
 Applicable accessory M12-16F



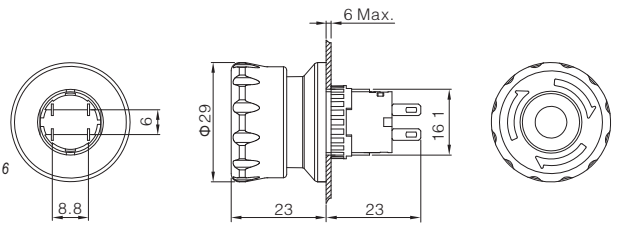
16mm Sealing cover
M12-16F



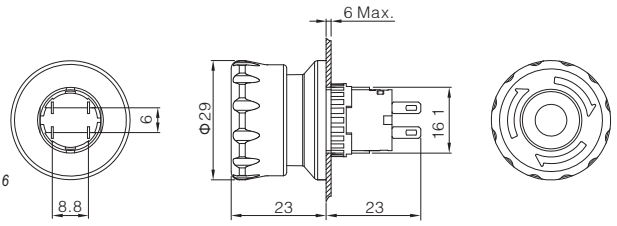
16mm Sealing cover
M12-16H



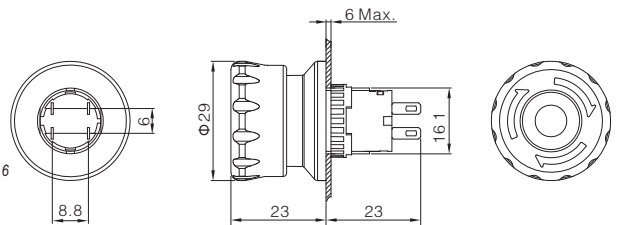
Contact structure 1NC/2NC/1NO1NC
 Shell material PA
 Tail configuration Terminal pins(2*0.5mm)
 IP degree※ No letter means IP65
 Applicable accessory Warning Ring S10-1650/Protective cover T34-16



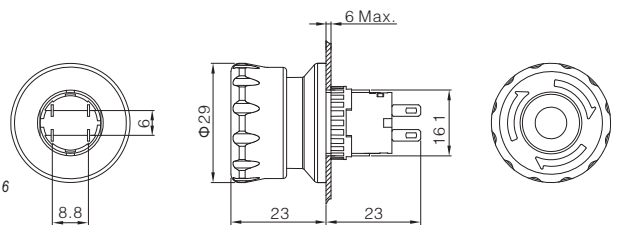
Contact structure 1NC
 LED color △ R G Y B W
 Shell material PA
 Tail configuration Terminal pins(2*0.5mm)
 IP degree※ No letter means IP65
 Applicable accessory Warning Ring S10-1650/Protective cover T34-16



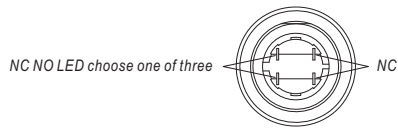
Contact structure 1NC/2NC/1NO1NC
 Shell material PA
 Tail configuration Terminal pins(2*0.5mm)
 IP degree※ No letter means IP65
 Applicable accessory Warning Ring S10-1650/Protective cover T34-16



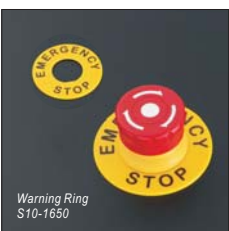
Contact structure 1NC
 LED color △ R G Y B W
 Shell material PA
 Tail configuration Terminal pins(2*0.5mm)
 IP degree※ No letter means IP65
 Applicable accessory Warning Ring S10-1650/Protective cover T34-16



Emergency Stop Pin Description



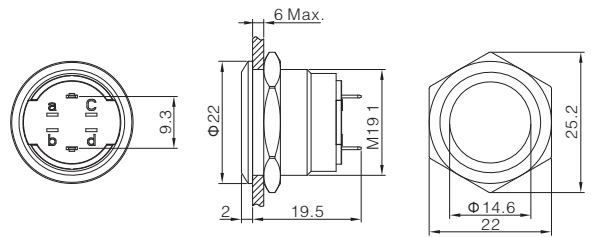
Emergency stop button defaults to a set of NC switches,
 the other two pins can be selected NC, NO, LED,
 Due to structural reasons, it is not recommended to leave it blank





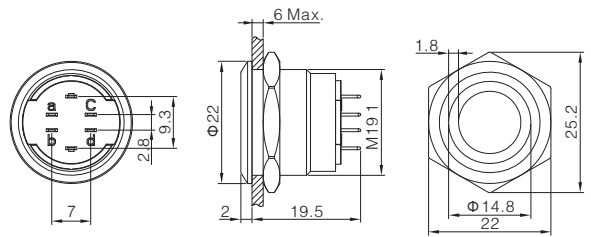
Flat Round
ONPOW6319F-10 ■ / J / S / ※

Contact structure 1NO
 Operation type ■ Z: Latching / No letter means momentary
 Shell material Stainless steel
 Tail configuration Terminal pins (2*0.5mm)
 IP degree ※ No letter means IP65 / FP: IP67
 Applicable accessory M12-19F



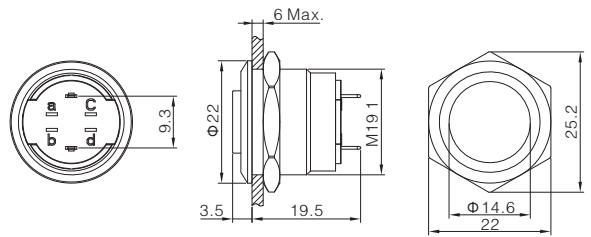
Ring-illuminated
ONPOW6319F-10 ■ E / J / Δ / ▲ / S / ※

Contact structure 1NO
 Operation type ■ Z: Latching / No letter means momentary
 LED color Δ R G Y B W
 LED voltage ▲ 6V / 12V-24V
 Shell material Stainless steel
 Tail configuration Terminal pins (2*0.5mm)
 IP degree ※ No letter means IP65 / FP: IP67
 Applicable accessory M12-19F



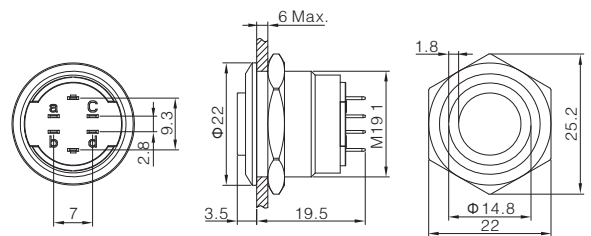
High Round
ONPOW6319H-10 ■ / J / S / ※

Contact structure 1NO
 Operation type ■ Z: Latching / No letter means momentary
 Shell material Stainless steel
 Tail configuration Terminal pins (2*0.5mm)
 IP degree ※ No letter means IP65 / FP: IP67
 Applicable accessory M12-19H



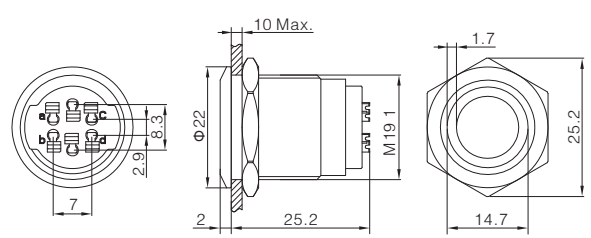
High Head Ring-illuminated
ONPOW6319H-10 ■ E / J / Δ / ▲ / S / ※

Contact structure 1NO
 Operation type ■ Z: Latching / No letter means momentary
 LED color Δ R G Y B W
 LED voltage ▲ 6V / 12V-24V
 Shell material Stainless steel
 Tail configuration Terminal pins (2*0.5mm)
 IP degree ※ No letter means IP65 / FP: IP67
 Applicable accessory M12-19H



Ring-illuminated
ONPOW6319F-10 ■ E / J / Δ / ▲ / S / ※

Contact structure 1NO
 Operation type ■ Z: Latching / No letter means momentary
 LED color Δ R G Y B W
 LED voltage ▲ 6V / 12V-24V
 Shell material Stainless steel
 Tail configuration Quick-connect type socket
 IP degree ※ No letter means IP65 / FP: IP67
 Applicable accessory M12-19F



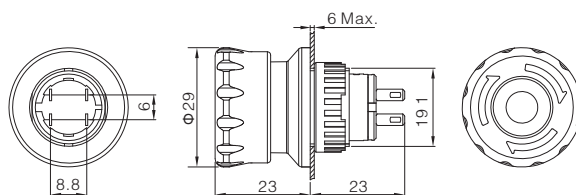
19mm Sealing cover
M12-19F

19mm Sealing cover
M12-19H



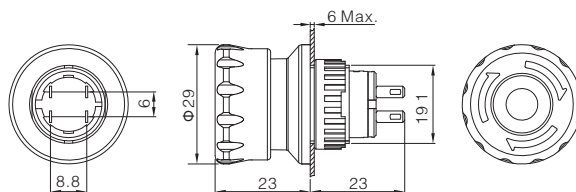
Emergency stop (plastic shell)
ONPOW6319-□TS/J/PA/※

Contact structure 1NC/2NC/1NO1NC
Shell material PA
Tail configuration Terminal pins(2*0.5mm)
IP degree※ No letter means IP65
Applicable accessory Warning Ring S10-1950/Protective cover T34-19



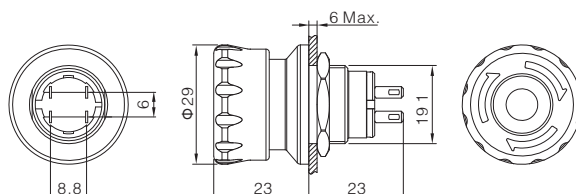
Emergency stop (plastic shell)
ONPOW6319-01TS/J/PA/※

Contact structure 1NC
LED color Δ R G Y B W
Shell material PA
Tail configuration Terminal pins(2*0.5mm)
IP degree※ No letter means IP65
Applicable accessory Warning Ring S10-1950/Protective cover T34-19



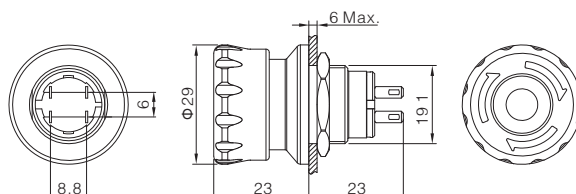
Emergency stop (Aluminium alloy shell)
ONPOW6319-□TS/J/※

Contact structure 1NC/2NC/1NO1NC
Shell material PA
Tail configuration Terminal pins(2*0.5mm)
IP degree※ No letter means IP65
Applicable accessory Warning Ring S10-1950/Protective cover T34-19



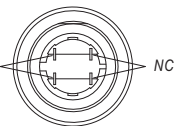
Emergency stop (Aluminium alloy shell)
ONPOW6319-01TS/J/※

Contact structure 1NC
LED color Δ R G Y B W
Shell material PA
Tail configuration Terminal pins(2*0.5mm)
IP degree※ No letter means IP65
Applicable accessory Warning Ring S10-1950/Protective cover T34-19

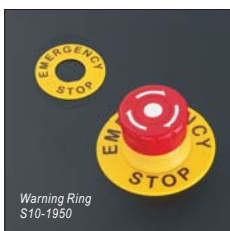


Emergency Stop Pin Description

NC NO LED choose one of three



Emergency stop button defaults to a set of NC switches,
the other two pins can be selected NC, NO, LED,
Due to structural reasons, it is not recommended to leave it blank



Warning Ring
S10-1950

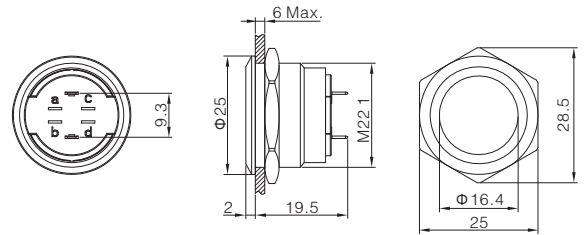


Protective cover
M34-19



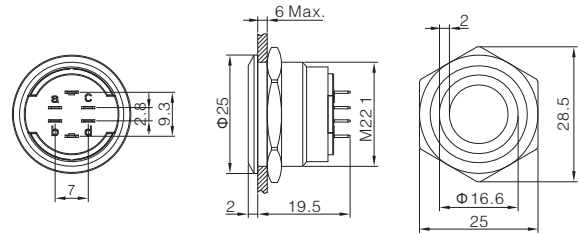
Flat Round
ONPOW6322F-10 ■ / J / S / ※

Contact structure 1NO
 Operation type ■ Z: Latching / No letter means momentary
 Shell material Stainless steel
 Tail configuration Terminal pins (2*0.5mm)
 IP degree ※ No letter means IP65 / FP: IP67
 Applicable accessory M12-22F



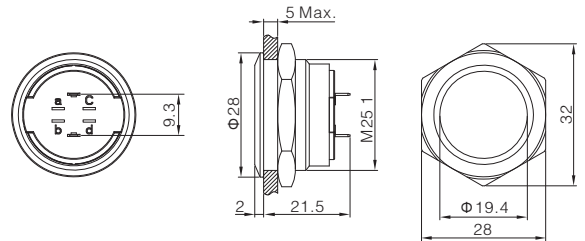
Ring-illuminated
ONPOW6322F-10 ■ / E / J / Δ / ▲ / S / ※

Contact structure 1NO
 Operation type ■ Z: Latching / No letter means momentary
 LED color Δ R G Y B W
 LED voltage ▲ 6V / 12V-24V
 Shell material Stainless steel
 Tail configuration Terminal pins (2*0.5mm)
 IP degree ※ No letter means IP65 / FP: IP67
 Applicable accessory M12-22F



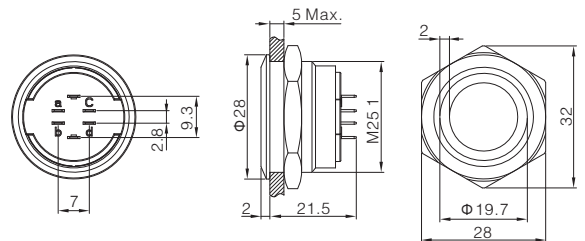
Flat Round
ONPOW6325F-10 ■ / J / S / ※

Contact structure 1NO
 Operation type ■ Z: Latching / No letter means momentary
 Shell material Stainless steel
 Tail configuration Terminal pins (2*0.5mm)
 IP degree ※ No letter means IP65 / FP: IP67
 Applicable accessory M12-25F



Ring-illuminated
ONPOW6325F-10 ■ / E / J / Δ / ▲ / S / ※

Contact structure 1NO
 Operation type ■ Z: Latching / No letter means momentary
 LED color Δ R G Y B W
 LED voltage ▲ 6V / 12V-24V
 Shell material Stainless steel
 Tail configuration Terminal pins (2*0.5mm)
 IP degree ※ No letter means IP65 / FP: IP67
 Applicable accessory M12-25F



22mm Sealing cover
M12-22F



22mm Sealing cover
M12-22H



25mm Sealing cover
M12-25F

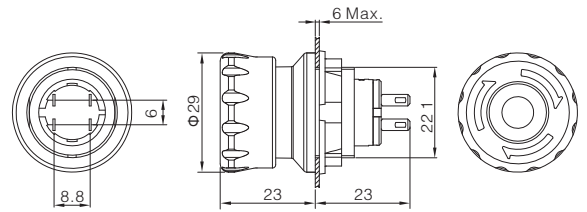


25mm Sealing cover
M12-25H



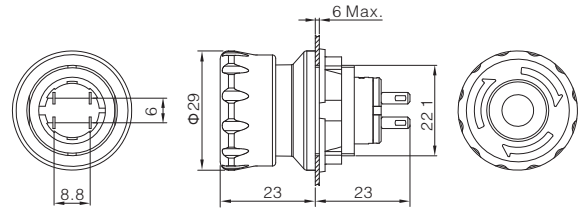
Emergency stop (plastic shell)
ONPOW6322-□TS/J/PA/※

Contact structure 1NC/2NC/1NO1NC
Shell material PA
Tail configuration Terminal pins(2*0.5mm)
IP degree※ No letter means IP65
Applicable accessory Warning Ring S10-2250/Protective cover T16



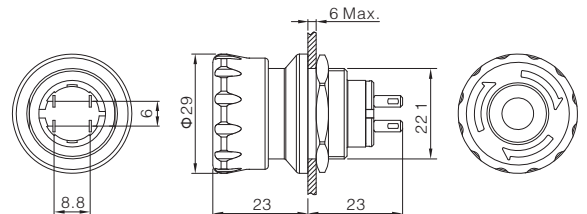
Emergency stop (plastic shell)
ONPOW6322-01TS/J/PA/※

Contact structure 1NC
LED color Δ R G Y B W
Shell material PA
Tail configuration Terminal pins(2*0.5mm)
IP degree※ No letter means IP65
Applicable accessory Warning Ring S10-2250/Protective cover T16



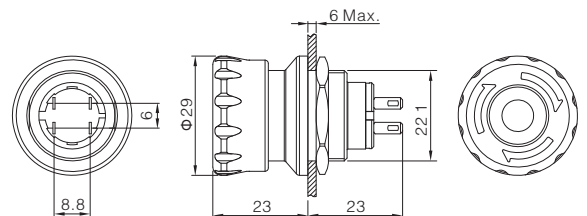
Emergency stop (Aluminium alloy shell)
ONPOW6322-□TS/J/※

Contact structure 1NC/2NC/1NO1NC
Shell material PA
Tail configuration Terminal pins(2*0.5mm)
IP degree※ No letter means IP65
Applicable accessory Warning Ring S10-2250/Protective cover T16



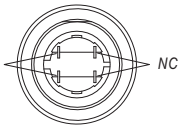
Emergency stop (Aluminium alloy shell)
ONPOW6322-01TS/J/※

Contact structure 1NC
LED color Δ R G Y B W
Shell material PA
Tail configuration Terminal pins(2*0.5mm)
IP degree※ No letter means IP65
Applicable accessory Warning Ring S10-2250/Protective cover T16

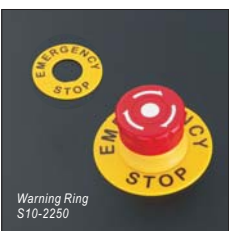


Emergency Stop Pin Description

NC NO LED choose one of three



Emergency stop button defaults to a set of NC switches,
the other two pins can be selected NC, NO, LED,
Due to structural reasons, it is not recommended to leave it blank



Warning Ring
S10-2250



Protective cover
T16