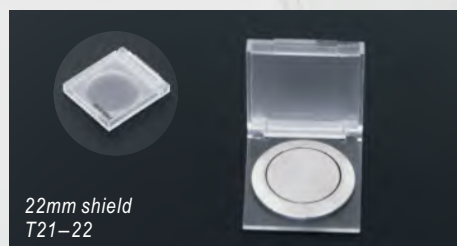
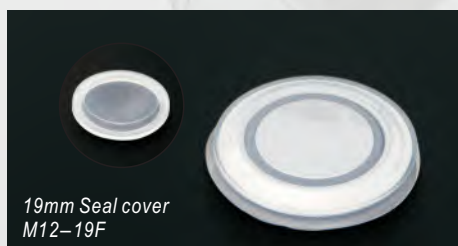


ONPOW61 Series

- ⊙ Mounting hole diameter: $\Phi 16, \Phi 19, \Phi 22, \Phi 25\text{mm}$.
- ⊙ Switch characteristics: fast-acting / single knife double-throw.
- ⊙ Product features: The series is a three-color light structure, configuration options are abundant
The whole series of synchronous quick-connect sockets with buckle bit more solid
- ⊙ Protection grade: IP65/IP67.



ONPOW61 Series model description

ONPOW61 ☆ F-□ ■ ◇ / △ / ▲ / ○ / ※

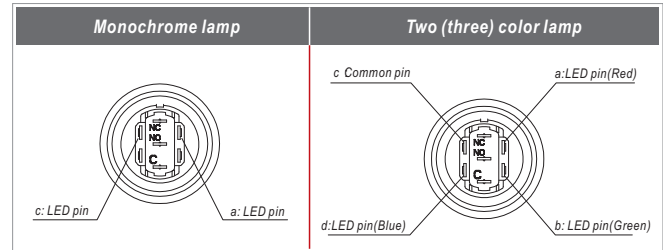
Symbol	Symbol name	Specify
☆	Panel cutout dimension	16 Φ16mm / 19: Φ19mm / 22: Φ22mm / 25: Φ25mm
□	Contact structure	11: 1NO1NC / 22: 2NO2NC (For 22 and 25mm only) / No letter means indicator
■	Operation type	Z: Latching / No letter means Momentary
◇	Lamp type	E: ○ Ring / ET: ⊙ Ring+ power sign / No letter means without lamp
	Lamp color	R: Red / G: Green / Y: Yellow / B: Blue / W: White
	Lamp voltage	6V / 12V / 24V / 110V / 220V Other voltage can be customized
	Shell material	S: stainless steel / A: Aluminium alloy (black) to be customized
※	IP Degree	No letter means IP65 / FP: IP67

Note: please carefully read the specific description of the product and select the corresponding code in the table according to different symbols.

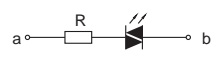
Performance Characteristic

Operating temperature	-25 ~ + 55 (no freezing) keep the air flowing around illuminated push button
Operation Humidity	45~85%RH(no condensation)
Contact Resistor	50mΩ
Insulation Resistor	100MΩ 500VDC)
Maximum withstand voltage	1500V,50Hz,1min
Vibration Resistance	50Hz, Amplitude 1.2mm
Solder Heat Resistance	320 (or 40W soldering iron)no more than 3 seconds
Switch rating	1 A 220 VAC
Switching type	C(Single-break fast-motion changeover contact)
Mechanical Life	Momentary button 1000K cycles, latching button 500K cycles
Electrical Life	50K cycles
Panel Thickness	1~7mm
Torque	around 0.6Nm
Actuator material	stainless steel / Aluminium alloy (black) to be customized
Body material	stainless steel / Aluminium alloy (black) to be customized
Base material	PA
Operation Pressure	around 2.5N
Operation Travel	around 3mm
Terminal Type	Pin terminal(2.8×0.5mm)
Protecting level	IP65 / IP67 (K09)

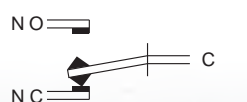

Lamp bead pin description



Lamp ratings

LED Life	Rated Current	Voltage fluctuation	Lamp Circuit Diagram
40000 hours	24V about 15mA 110V about 2mA	DC: ±0% AC: ±20%	 Using AC/DCLED lamp, the terminals have no difference of anode and cathode.

Switching Operation

Type	Diagram	Sign
C		

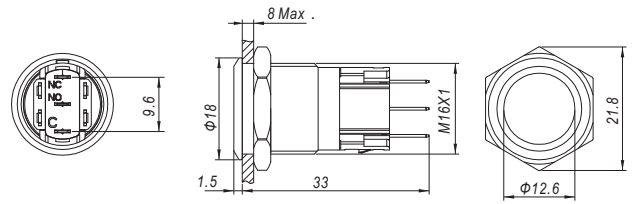
Note: Using three terminals, single-break and quick-motion contact.





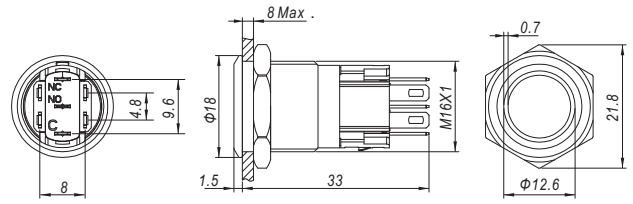
ONPOW6116F-11 ■/S/※

Contact structure 1NO1NC
Operation type No letter means momentary / Z(latching)
Shell material Stainless steel
Degree of protection No letter means IP65 / FP: IP67
Applicable accessory M12-16F Sealing cover / Quick connect socket M36-11



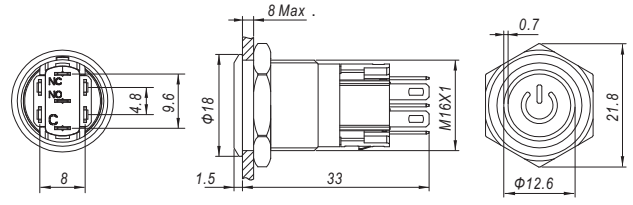
ONPOW6116F-11 ■E/△/▲/S/※

Contact structure 1NO1NC
Operation type No letter means momentary / Z(latching)
Lamp color R G Y B W
Lamp voltage 6V/12V/24V/110V/220V
Shell material Stainless steel
Degree of protection No letter means IP65/FP: IP67
Applicable accessory M12-16F Sealing cover / Quick connect socket M36-11D



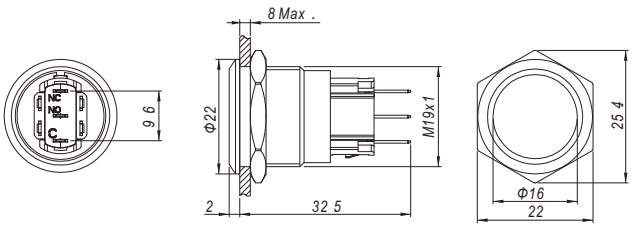
ONPOW6116F-11 ■E/△/▲/S/※

Contact structure 1NO1NC
Operation type No letter means momentary / Z(latching)
Lamp color R G Y B W
Lamp voltage 6V/12V/24V/110V/220V
Shell material Stainless steel
Degree of protection No letter means IP65/FP: IP67
Applicable accessory M12-16F Sealing cover / Quick connect socket M36-11D



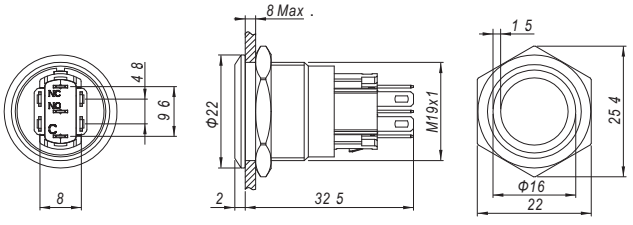
ONPOW6119F-11 ■/S/※

Contact structure 1NO1NC
Operation type No letter means momentary / Z(latching)
Shell material Stainless steel
Degree of protection No letter means IP65/FP: IP67
Applicable accessory M12-19F Sealing cover / Quick connect socket M36-11



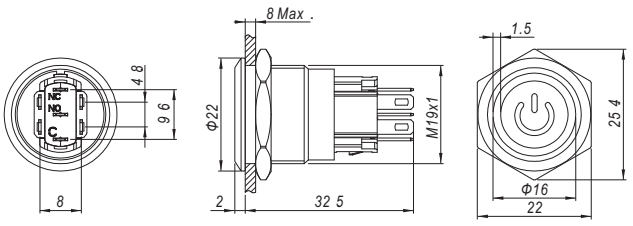
ONPOW6119F-11 ■E/△/▲/S/※

Contact structure 1NO1NC
Operation type No letter means momentary / Z(latching)
Lamp color R G Y B W
Lamp voltage 6V/12V/24V/110V/220V
Shell material Stainless steel
Degree of protection No letter means IP65/FP: IP67
Applicable accessory M12-19F Sealing cover / Quick connect socket M36-11D



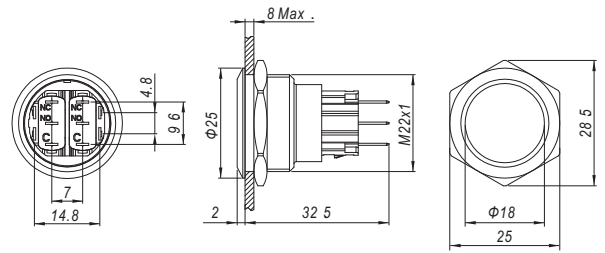
ONPOW6119F-11 ■E/△/▲/S/※

Contact structure 1NO1NC
Operation type No letter means momentary / Z(latching)
Lamp color R G Y B W
Lamp voltage 6V/12V/24V/110V/220V
Shell material Stainless steel
Degree of protection No letter means IP65/FP: IP67
Applicable accessory M12-19F Sealing cover / Quick connect socket M36-11D

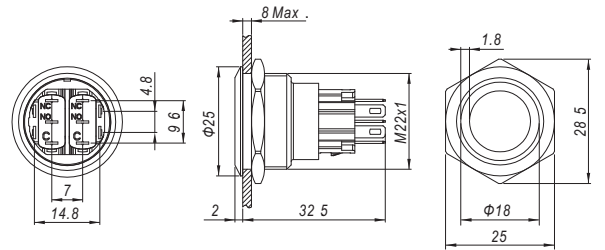




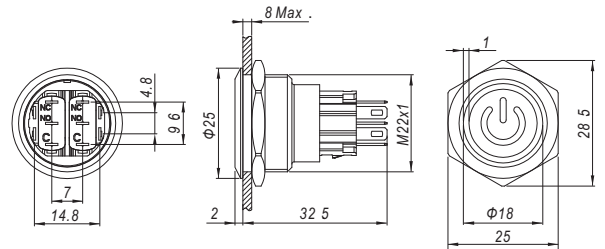
Contact structure 11: 1NO1NC/22: 2NO2NC
Operation type No letter means momentary / Z(latching)
Shell material Stainless steel
Degree of protection No letter means IP65/FP: IP67
Applicable accessory M12-22F Sealing cover /
 Quick connect socket M36-22



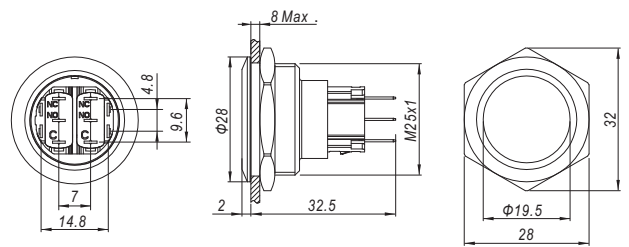
Contact structure 11: 1NO1NC/22: 2NO2NC
Operation type No letter means momentary / Z(latching)
Lamp color R G Y B W
Lamp voltage 6V/12V/24V/110V/220V
Shell material Stainless steel
Degree of protection No letter means IP65/FP: IP67
Applicable accessory M12-22F Sealing cover /
 Quick connect socket M36-22D



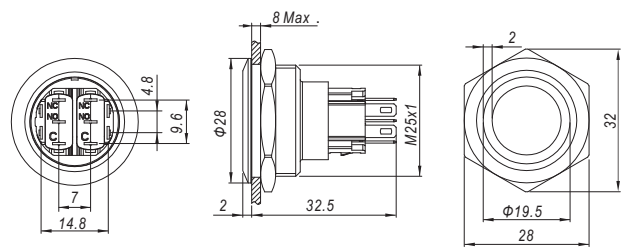
Contact structure 11: 1NO1NC/22: 2NO2NC
Operation type No letter means momentary / Z(latching)
Lamp color R G Y B W
Lamp voltage 6V/12V/24V/110V/220V
Shell material Stainless steel
Degree of protection No letter means IP65/FP: IP67
Applicable accessory M12-22F Sealing cover /
 Quick connect socket M36-22D



Contact structure 11: 1NO1NC/22: 2NO2NC
Operation type No letter means momentary / Z(latching)
Shell material Stainless steel
Degree of protection No letter means IP65/FP: IP67
Applicable accessory M12-25F Sealing cover /
 Quick connect socket M36-22



Contact structure 11: 1NO1NC/22: 2NO2NC
Operation type No letter means momentary / Z(latching)
Lamp color R G Y B W
Lamp voltage 6V/12V/24V/110V/220V
Shell material Stainless steel
Degree of protection No letter means IP65/FP: IP67
Applicable accessory M12-25F Sealing cover /
 Quick connect socket M36-22D



Contact structure 11: 1NO1NC/22: 2NO2NC
Operation type No letter means momentary / Z(latching)
Lamp color R G Y B W
Lamp voltage 6V/12V/24V/110V/220V
Shell material Stainless steel
Degree of protection No letter means IP65/FP: IP67
Applicable accessory M12-25F Sealing cover /
 Quick connect socket M36-22D

