



For more info, please contact us



**SUZHOU HUNTEC INT'L TRADING CO., LTD.**

Add.: 36 zijing street, Mudu Town, Wuzhong District, Suzhou,  
Jiangsu Province, China  
Factory: Jiangxi Hunttec Electrical Technology Co., Ltd.  
Add.: 1829th Yangguang Avenue, Xinyu, Jiangxi Province, China

Email: [info@cnhunttec.com](mailto:info@cnhunttec.com)

Tel: +86-0512-65577928

Website: [www.cnhunttec.com](http://www.cnhunttec.com)

[www.chikucontact.com](http://www.chikucontact.com)



China's leading supplier of electrical  
**CONNECTION** solutions



[www.cnhunttec.com](http://www.cnhunttec.com)  
[www.chikucontact.com](http://www.chikucontact.com)





- We are committed to keeping China's electric connection technology in step with the world
- Create better return on investment and experience for global customers

**Brand:** Huntec, under the brand name “**CHIKU**”, has grown into a full-service supply chain electrical connection manufacturing company since its inception in **2003**.

**Company:** HUNTEC Suzhou is located in Suzhou, Jiangsu Province, which is the overseas marketing centre of HUNTEC Group, dedicated to expanding and managing the international market.

**Factory:** Yangguang Avenue, High-tech Development Zone, Xinyu, Jiangxi.

**Scale:** Covering an area of 100 acres, **50,000** square meters of workshops have been built.

**Employee:** More than **600** employees, of which R&D and engineering: **25%**.

**Service Network:** Shanghai, Jiangxi, Suzhou, Beijing, Shenzhen, Dongguan, Nanjing etc.

**Design & Manufacturing:** Full chain production of design, mold design and manufacturing, stamping, turning, injection molding, assembly and testing with independent intellectual property rights.

**Certificates & Patents:** National high-tech enterprise, provincial scientific research center. **CNAS** accredited Certified ISO9001/14001/45001 systems, **TUV, UL, CE, CQC, ATEX** and other certifications.  
More than **40** invention patents, more than **120** utility model patents.

## COMPANY INTRODUCTION





## R&D and manufacture by ourselves



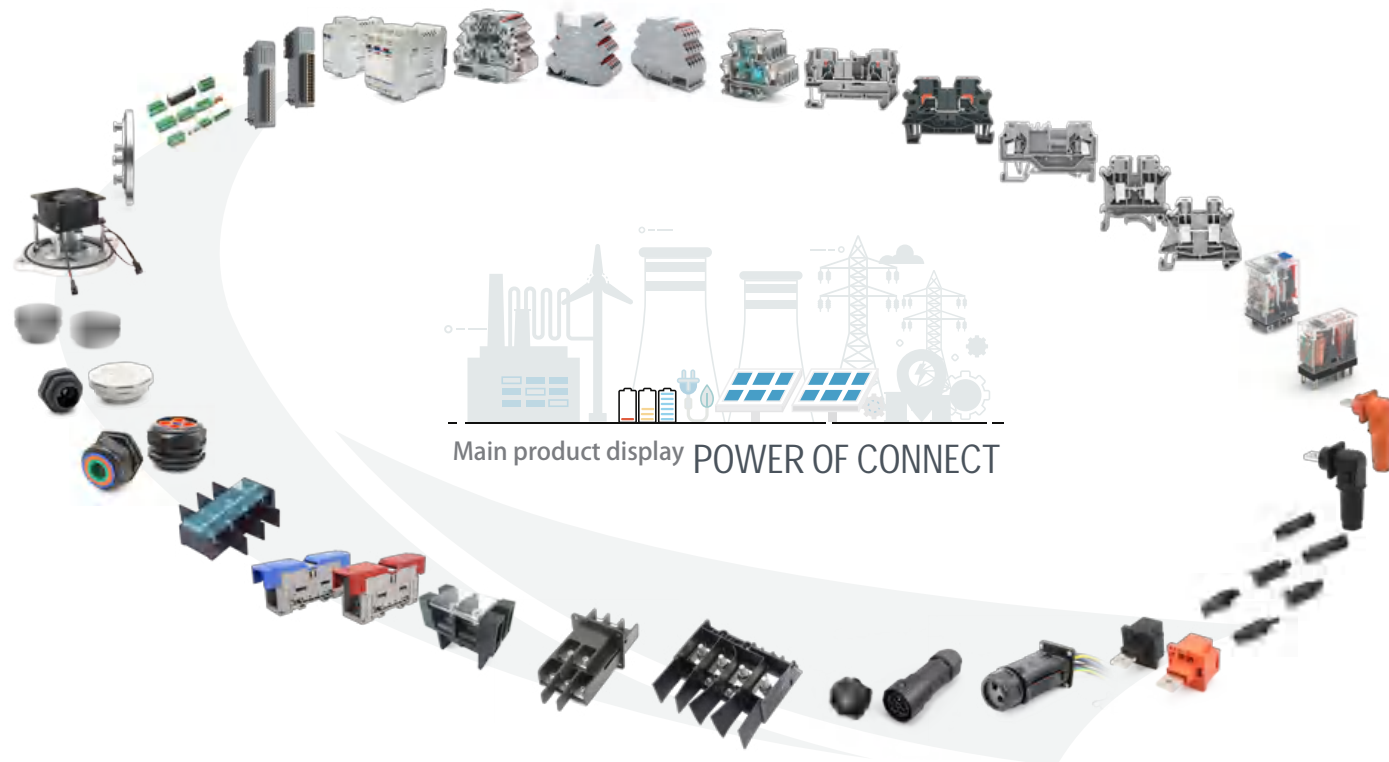
Huntec Electric is committed to researching, developing, designing and manufacturing electrical connectors, providing products with stable performance and strong competitiveness for global system integrators and machinery manufacturers.





All products cover the entire field

Certificates



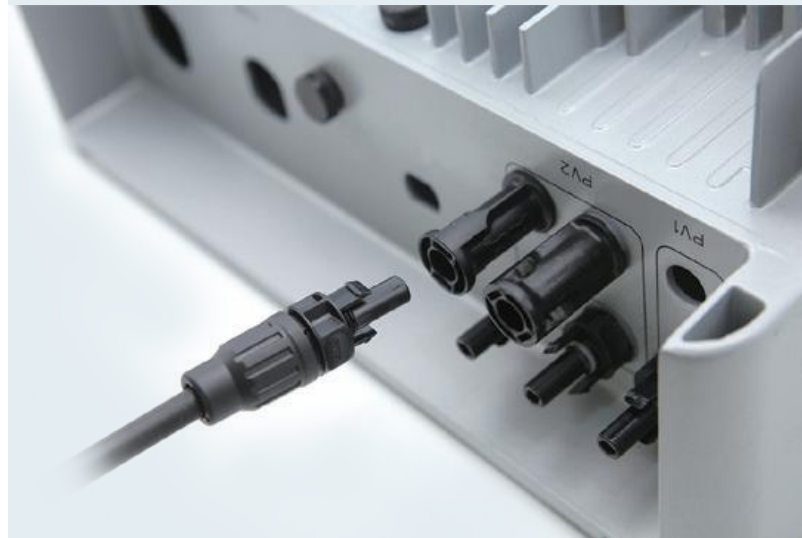
Main product display POWER OF CONNECT



## OEM/ODM

Huntec Electric is committed to researching, developing, designing and manufacturing electrical connectors, Provide products with stable performance and strong competitiveness for global system integrators and machinery manufacturers.

"One-stop" electrical connection solution.

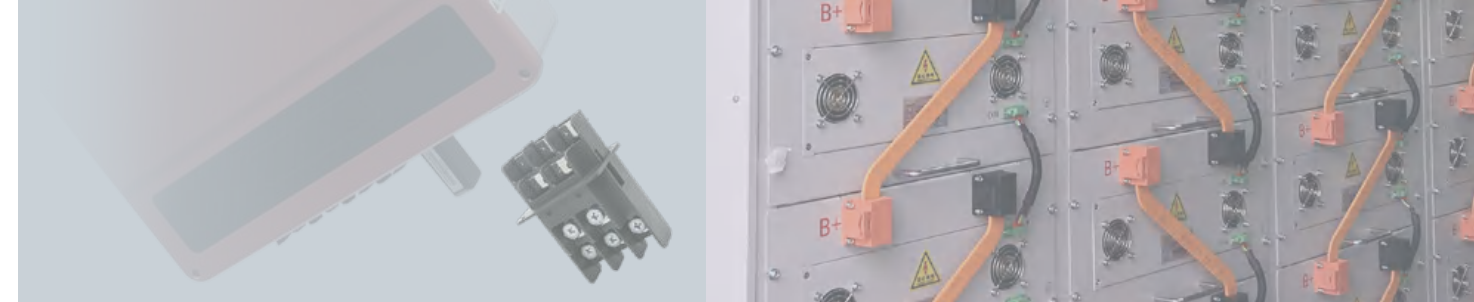


## PV Photovoltaic DC Connector

The DC connector (DC connector) of the ground photovoltaic system is mainly used in the electrical connection of photovoltaic module junction boxes, photovoltaic inverters, energy storage equipment, photovoltaic combiner boxes, and photovoltaic power station arrays.

## Photovoltaic AC Connector

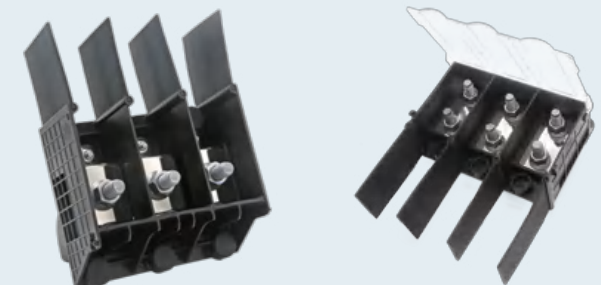
RBH100-... The AC connector, mainly used for the connection of AC input and output on photovoltaic low-power inverters. Through this product, the wiring inside and outside the cabinet can be separated, and it has its own IP protection level, which can effectively protect the inside of the cabinet components.



## RBH High current panel-through terminals

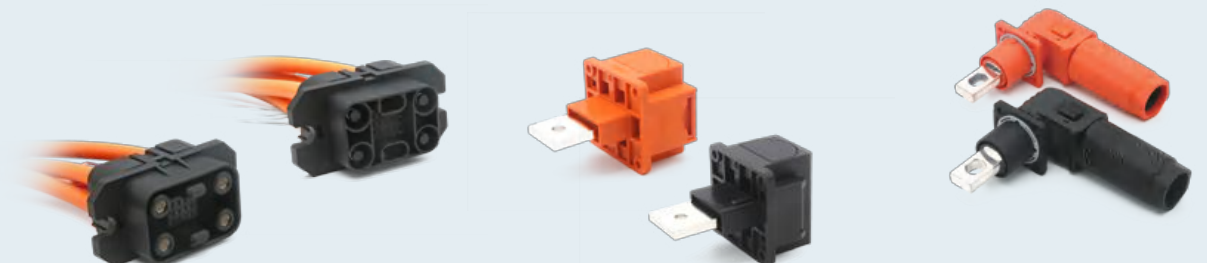
It can be used for power connection with in the PV inverter.

- Novel structure, reasonable design and reliable performance
- High current, high voltage
- IP67 protection level
- Compatible with copper and aluminum wire to meet global usage scenarios



## RES-P Pole connector for energy storage

RES-P series mainly used for pole connection for photovoltaic energy storage, battery packs and so on



## Waterproof RJ45

Signal connection for inverters & energy storage cabinets, The wiring harness can be customized



## RCJ-250A Busbar connector for energy storage system

Fast and reliable electrical connection is achieved by elastic crimping of sockets



## Solutions for photovoltaic new energy

### Nylon waterproof air vent plug

- Fully automatic production line to ensure product consistency and stability
- 100% air permeability is fully inspected to ensure the quality of the perfect experience of the end customer
- Integral, ultrasonic welding, more firm
- Each product has an independent serial number to ensure the traceability of after-sales service



### Metal waterproof air vent plug

- Material are available: copper, aluminum, stainless steel
- 100% air permeability is fully inspected to ensure the quality of the perfect experience of the end customer
- Customized available



### Burst-proof air vent plug

Except for waterproof and breathable function, when the internal pressure of the sealed box rises to the limit due to abnormal conditions, our products can connect the inside with the outside directly, which can quickly release pressure and heat to prevent the sealed box from exploding.



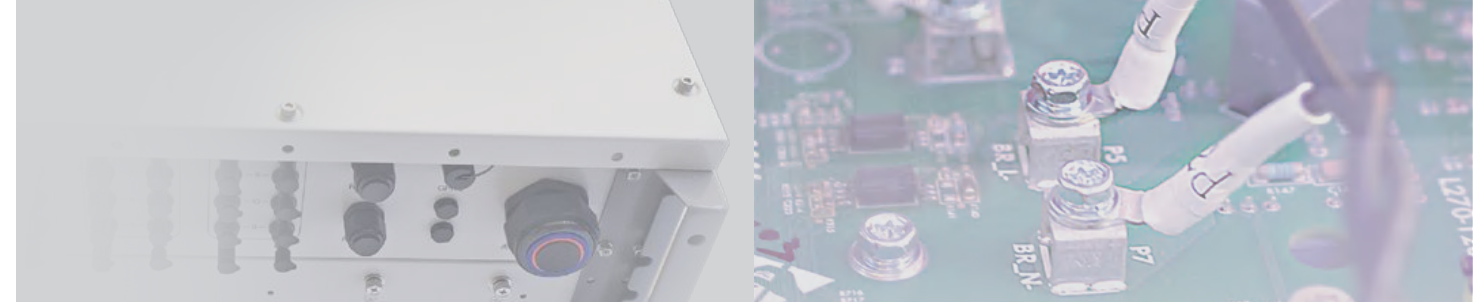
### Nylon waterproof cable glands

- Double thread, smooth installation, fool - proof
- The surface of the nut is designed as a bright surface, which is convenient for cleaning and reduces the dust accumulation of bacteria and pollutants
- Applicable to medical, food, machinery, photovoltaic, automation equipment and other industries



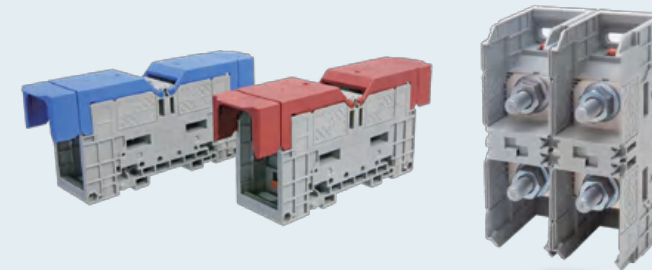
### Metal waterproof cable glands

- Pressing nut fool-proofing, ensure tension, high protection grade
- Automatic alignment thread design, good shockproof, air tightness
- Shielding spring helical structure, easy installation, good shielding effect
- All silica gel integrated structure, flame retardant silica gel, aging resistance



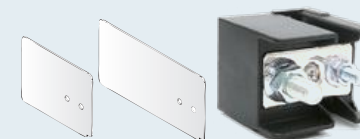
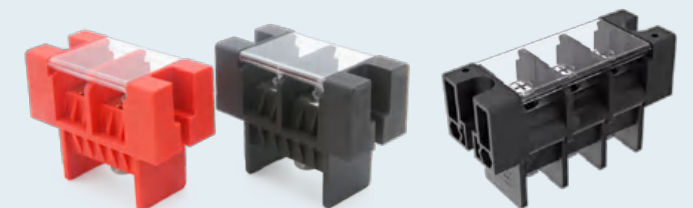
### RFF Twin stud terminal

- Equipped with TO type end, firm and reliable connection
- Hinged protective cover is optional for safer use



### RBH Feed-through terminal block

- Simple structure and convenient installation
- With TO type end, it is firm and reliable
- Equipped with dust-proof cover and PVC white marking strip, anti-arc spacer optional



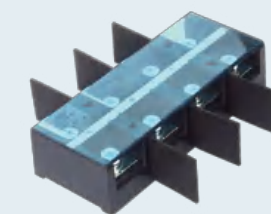
### RSC... High current terminal block

RSC300A open type high current terminal with simple design, visual wiring, quick and easy installation.



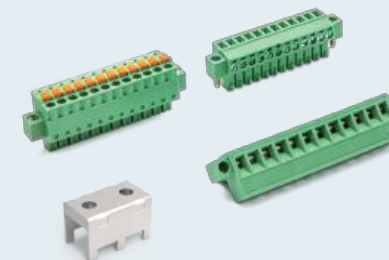
### RTC Open terminal block

- Simple structure and convenient installation
- With TO type end, it is firm and reliable
- Equipped with dust-proof cover and PVC white marking strip, anti-arc spacer optional



### PCB Terminal series

- Flexibility, variety of connection technologies such as screws and springs are optional
- Variety of stitch lengths and number of positions are available for a wide range of applications
- Provide fixed and plug-in connectors with multiple connection methods
- such as 2 to 24 positions screws or springs. Excellent material, high reliability and stability
- Applying in signal or power transmission in various industrial application environments





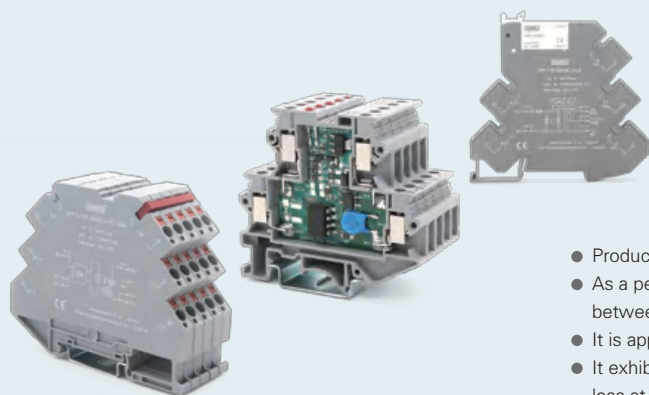
## RTP-S-I/RSI Isolated conversion/interface module series products

- Reinforce high-level insulation for both input and output, as well as ensure high-precision signal transmission
- Simultaneously, it eliminates signal interference, realizing maximum complete transmission of signals
- Guarantee the precision and consistency that are essential for industrial control systems



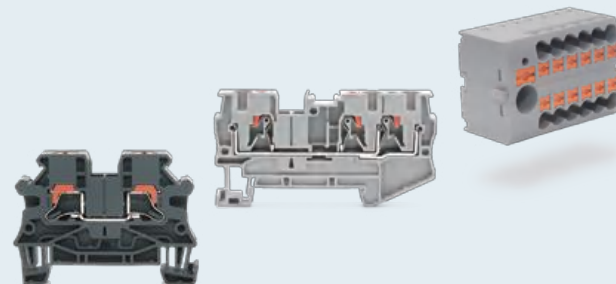
## RTP/RUG Optocoupler relay series

- Products provide perfect reliable isolation of control units from sensors and actuators
- As a peripheral of process control and an interface element that facilitates the link between the control signal and the regulating device
- It is applicable to a wide range of voltages and power levels
- It exhibits high insulation voltage, elevated switching frequency, and minimal signal loss at the control terminal



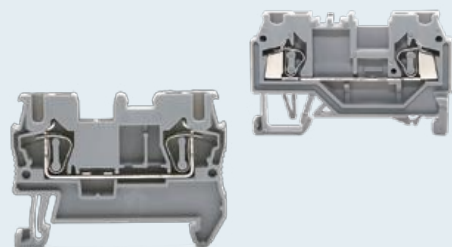
## RPI /RPV Push-in spring terminal blocks

- Adopt push-in technology, it is without special tools and saving time in installation
- Color-coded pull button is to enforce safe wiring operation



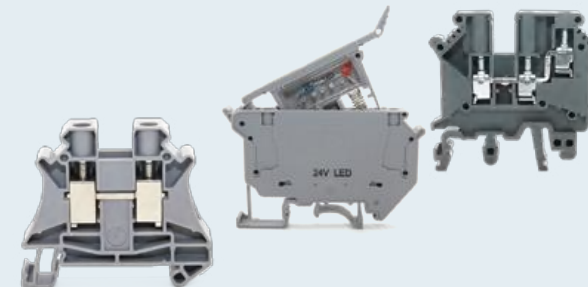
## RNS/RST Spring cage terminal blocks

- Wires can be connected without pretreatment to realize quick installation
- Small opening force and large clamping force, not damage the wire The terminal
- Good anti-vibration, gas sealing and stability
- Compacted miniature spring cage terminal blocks



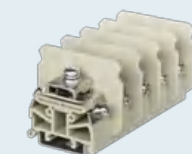
## RUK/RUT/RTB Universal screw terminal block series

- Multi-wires connection saves time and space
- Different sections terminal blocks using unified accessories designed saving cost
- The bridge and Mark components are standardized and provide convenience



## RDT Unipolar distribution box series

- Transparent appearance facilitates easy observation of reliable connections
- Multiple distribution boxes can be connected in series using jumpers

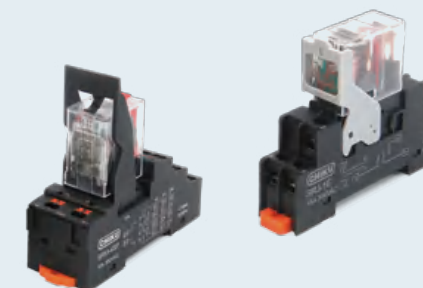


## RMJ Small bus bar terminal block



## ARJ/ARL/ARM Compact power relays

- Transparent housing, visible contact status
- With motion indicator window
- DC coil, optional: diode
- AC coil, optional: RC filter circuit
- AC: red Led indicator, DC: Green Led indicator
- Red and blue test bars to distinguish between AC and DC coil types



## Terminal block module series

- Quick interface for quick connection
- Status indicator make easy to maintain and debug
- Dedicated servo terminal block, easy to connect PLC and servo system in series
- Compact relay module to achieve the best installation space
- Innovative installation and release structure



## RP1... Screen terminal block

It is suitable for relay protection panel, power automation in relay protection system





## Solutions for industrial control and power



### Pushbutton switch

- Compact Size: Small and compact design for easy installation in limited spaces.
- Actuation Force and Travel: Balanced actuation force and travel distance for comfortable and durable operation.
- Contact Materials: High-conductivity metals like silver or gold for low-resistance and wear resistant contacts.

### Cam switch

- Source Selection: Allows safe transition between primary and backup power sources
- Automatic/Manual Operation: Can switch automatically upon power outage or manually as per user preference
- Preventive Parallelism: Ensures only one power source is active, avoiding electrical hazards



### RPS-C1 Rail power supply

- Ultra-slim design, powerful and space-saving
- High EMC, high dielectric strength and low interference for demanding applications
- Low power consumption, low self-heating, high energy efficiency and long service life

### RPS-C5 Switching power supply

- Built-in EMI filter, low ripple noise
- Short circuit, overload, over-current protection
- Constant current output ensures stable power supply, high efficiency and low operating temperature



### I/O Modules

- A wide range of I/O modules, function modules, bus couplers and controllers are available
- for maximum system flexibility
- Narrow frame design of I/O modules with a wide range of optional channels saves space in the control cabinet
- Line feed modules enable line feeds without the need for an additional Bus Coupler



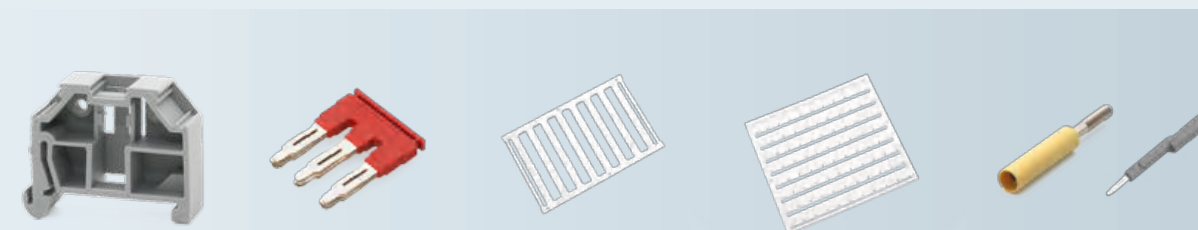
▲ On site installation, high protection IP67



### Pre-insulated terminal series

- Use high-quality brass/copper to ensure electrical conductivity
- Insulated ends and connectors are crimped and firmly connected to the wires, and the shape is beautiful
- Full range of products and application, covering for all electrical connection fields

## Accessories of terminal blocks



More products and solutions...