

DC small DC 7KW portable charging station

user 's manual



Huizhou Olink Technology Co.,Ltd

Factory Add
FLAT/RM 01, 7&8/F, 27-28 BLDG ZhongNan Hi-Tech Electronic Innovation
Park, 27 Li Cheng Industrial Road, ShuiKou HuiZhou, GuangDong, 516005 China

Please read this manual carefully and keep it properly before using the product.

CATALOGUE

一. Product Description	2
二. Product Features	3
三. product mix	4
四. usage method	5
五. Installation and maintenance	6~7
六. Fault handling	8
七. Quality Assurance Card	9

Product Description

Product parameters

Product Name	7KW portable charging station
Rated input voltage	AC 110~250V
Input current	16A/32A
Rated output power	7KW
Protection function	Protection against overvoltage, undervoltage, overcurrent, short circuit, leakage, etc
Protection level	IP54
Charging interface	GB/T 20234.2-2015
Charging cable length	Standard configuration of 3 meters (customizable)
work environment	Altitude: ≤ 2000m, temperature: -20 ° C~50 ° C
External dimensions	475mm*120mm*304mm(Length * Width * Height)
Number of charging guns	1 piece
working temperature	-30 ° C to 55 ° C
humidity	5% -95% RH (no condensation)
communication protocol	OCPP 1.6 / OCPP 2.0
Support gun head	GB/T
Design standards	GB/T 18487.1

Product Features

security

- Equipped with unique safety mechanisms such as pre charging protection, main circuit safety detection, and remote diagnostic management;
- Having basic protection measures such as lightning protection, overvoltage, overcurrent, short circuit, and overheating;
- Comprehensive charging protection functions and mechanisms effectively ensure the safety of personnel and vehicles, and guarantee charging operations Safe and reliable.

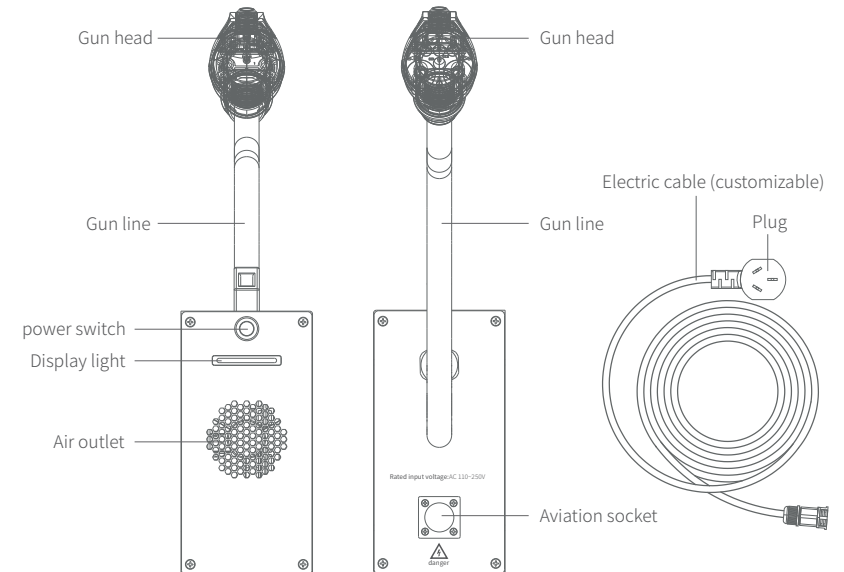
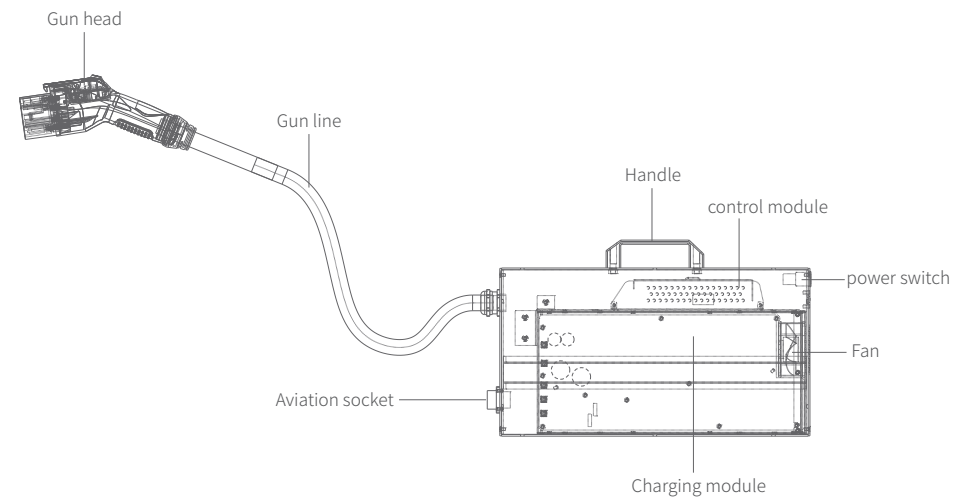
intelligence

- Intelligent compatibility with both new and old national standard vehicles.

reliable

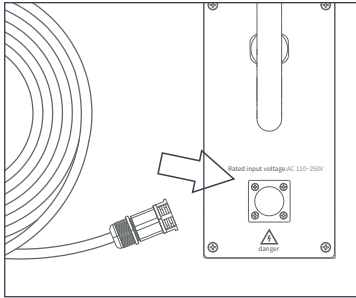
- Independently design hardware and software for each layer, with high consistency, compatibility, and stability within the system;
- The performance of voltage stabilization accuracy, current stabilization accuracy, ripple factor, standby power consumption, etc. is better than the industry average level;
- The system has high reliability and can be reliably charged in various environments.

product mix

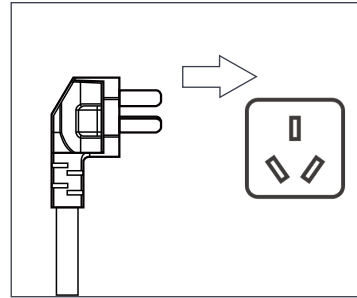


Internal structure diagram of the product

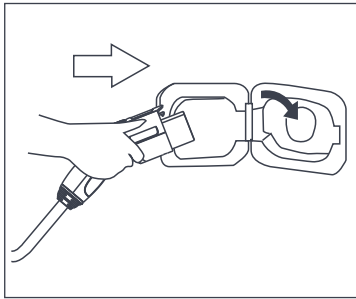
usage method



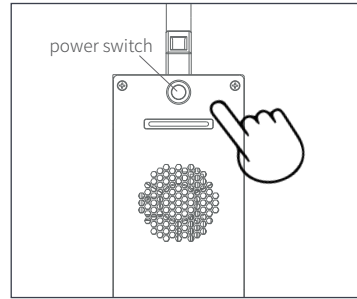
1. Plug in the input plug



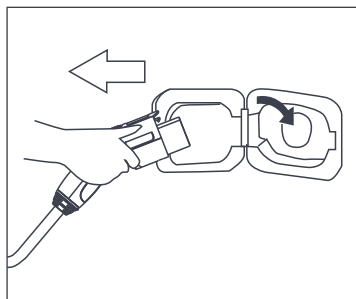
2. Plug in the power plug



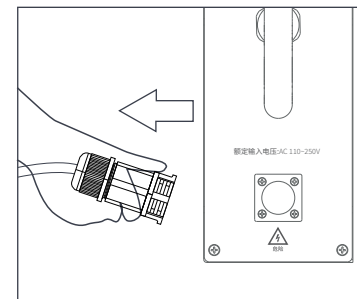
3. Insert the charging gun head into the vehicle body



4. Click on the power button of the machine to turn on the monitor



5. After charging is complete, click "Shut Down" to end the charging process. Unplug the charging plug.



6. Unplug the input plug

Arrival inspection

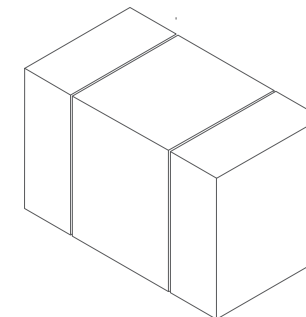
- After the charging station arrives, confirm whether the packaging is damaged, whether the labels are complete and correct. If there are any abnormalities, please inform the carrier immediately and take photos.
- Check whether the product accessories and accompanying documents are complete, and properly store the accessories and documents;
- Visually ensure that the charging station is free from any abnormal conditions such as collision, scratches, cracks, dents, rust, damage, paint peeling, etc;
- Check the charging gun for any abnormal conditions such as pressure damage, rust, damage, skewed pins, loose connections, etc;
- Sign for documents, record the situation, and promptly save, scan, distribute or transfer documents to related parties.

During the installation and maintenance process

- Live working is strictly prohibited;
- It is strictly prohibited to dismantle charging stations and internal components without authorization;
- When operating a charging station, it is essential to ensure personal safety and take appropriate protective measures;
- When wiring cables, the order of "PE line -> neutral line -> phase line" should be followed. When disconnecting cables, the opposite order should be followed;
- All assignments must strictly comply with relevant safety regulations and standards.

Remove packaging

Use an art knife to remove the packaging, confirm if the packaging is damaged, if the labels are complete and correct. If there are any abnormalities, please inform the carrier immediately, and take photos for evidence. You can sign and indicate it first, and immediately contact the manufacturer to discuss the handling.



- Cut off the straps on the outer box with a craft knife;
- Remove other internal protective materials such as cardboard boxes, plastic PE protective film, EPE protective pads, etc.



Ensure that the main circuit breaker and control circuit breaker of the charging station are both in the disconnected state.



Damage to the charging station during transportation after delivery is not covered by the warranty.

Disclaimers

Charging stations must be operated and used under specified conditions, including but not limited to accidents or damages caused by the following situations, which our company will not be responsible for

Related Responsibilities:

- All damages to charging stations and other equipment caused by human factors;
- Malfunctions and damages caused by failure to use according to the requirements of this manual;
- Normal use, wear and tear, aging, etc. of equipment;
- Disassembling, repairing, or modifying products without the consent of our company;
- Damage caused by other uncontrollable forces such as floods, fires, lightning strikes, typhoons, earthquakes, and abnormal voltages.

Charging module replacement

- In general, it is prohibited to remove the charging module at will. Only when the charging module malfunctions must it be replaced or replaced The charging module can only be plugged in and out during the renovation and upgrade process.

Maintenance guidance for charging stations

The content of this chapter is a recommended reference guide for monthly or quarterly inspections. To ensure the reliable operation of charging stations, it is necessary to ensure that Ensure the quality of daily maintenance and inspection of charging stations.

Temperature and humidity

- Testing standards: temperature range of -5 ° C~40 ° C, relative humidity of 20%~85%;
- Testing tool: temperature and humidity meter;
- Detection method: The hygrometer measures relative humidity, and attention should be paid to keeping the water and gas collection unit clean and pollution-free during measurement.

Air duct and dust accumulation

- Testing standard: The module fan duct and cabinet duct are unobstructed and free of dust accumulation;
- Testing tools: brushes, etc;
- Testing method: Disassemble, clean, and wash the fan, baffle, dust net, etc., air dry them, and reinstall them in their original positions.

noise

- Testing standard: The charging module fan runs without any abnormal sound.

Internal connection

- detection standard: socket connection is good; There is no local overheating or aging phenomenon in the connecting cable

input voltage

- Testing standard: The AC input line voltage must be between AC 110~250V
- Testing tool: multimeter.

Alarm Log

- Testing standard: Read alarm records from the monitoring system records, check and clean them as needed.

Fault handling

Serial number	Fault description	processing method
1	The power switch cannot be turned on after multiple operations	○ Contact after-sales service
2	The fault indicator light is on	○ Contact after-sales service

Quality Assurance Card

There is a dedicated after-sales service organization for charging, composed of professional technicians, including 24-hour telephone technical guidance services On site training for service and after-sales service engineers, equipment maintenance services, etc. The company has established comprehensive after-sales service standards and strict regulations The after-sales service assessment system aims to gradually improve after-sales service.

After sales service card

full name: _____ Telephone: _____

Email: _____ Address: _____

First installation and debugging time: _____

matters needing attention

◉ If there are any issues with the product, please contact customer service as soon as possible.

Service Hotline:4000-585-888

