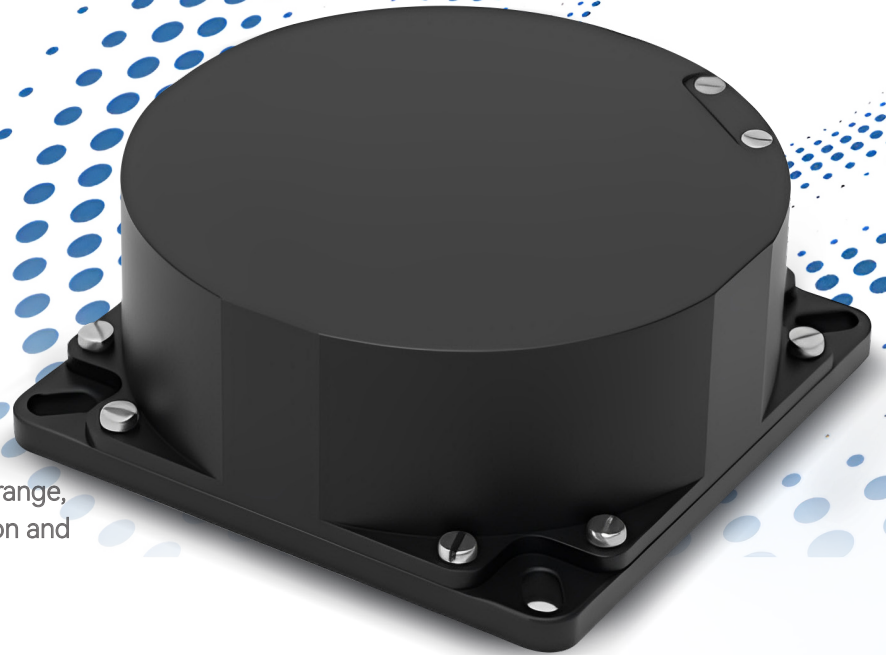


BSD70

FIBER OPTIC GYROSCOPE

- Digital closed loop mode,
Bias stability: 0.02°/h~0.2°/h
- Small size: 70mm×70mm×32.5mm,
Light weight: ≤210g
- High precision, simple structure, wide dynamic range,
short start-up time, strong resistance to vibration and shock.



APPLICATIONS



Servo tracking, Medium-precision INS, Platform stability
High-speed rail track detection, Optoelectronic pods, SOTM, USV

PERFORMANCE

Parameters	BSD70A	BSD70B	BSD70C	BSD70D
Input Range	± 1000 °/s	± 1000 °/s	± 1000 °/s	± 1000 °/s
Bias Stability	≤ 0.02 °/h	≤ 0.03 °/h	≤ 0.05 °/h	≤ 0.1 °/h
Bias Repeatability	≤ 0.02 °/h	≤ 0.03 °/h	≤ 0.05 °/h	≤ 0.1 °/h
Random Walk Coefficient	≤ 0.002 ° / √ h	≤ 0.003 ° / √ h	≤ 0.005 ° / √ h	≤ 0.01 ° / √ h
Scale Factor Non-linearity	≤ 10 ppm	≤ 15 ppm	≤ 20 ppm	≤ 50 ppm
Scaling Factor Repeatability	≤ 10 ppm	≤ 15 ppm	≤ 20 ppm	≤ 50 ppm
Scale Factor Asymmetry	≤ 10 ppm	≤ 15 ppm	≤ 20 ppm	≤ 50 ppm
Startup Time	≤ 1s			
Bandwidth	>200 HZ			
Power Supply	±5V (Single power supply -5 , +5 available)			
Power	≤ 2.5 W			
Operating Temperature	- 40 ~ 65°C			
Storage temperature	- 50 ~ 80 °C			
Vibration	20 ~ 2000 Hz , 0.06 g ² /Hz			
Shock	30 g, 11ms			
Data Refresh Date	200 ~ 2000 Hz			
Baud Rate	115200 ~ 921600 bps			
Output Mode	Broadcast (default) / Triggered (customized)			
Interface	RS-422			
Connector	J30J-15TJL			
Dimensions	70×70×32 mm			
Weight	280 g			