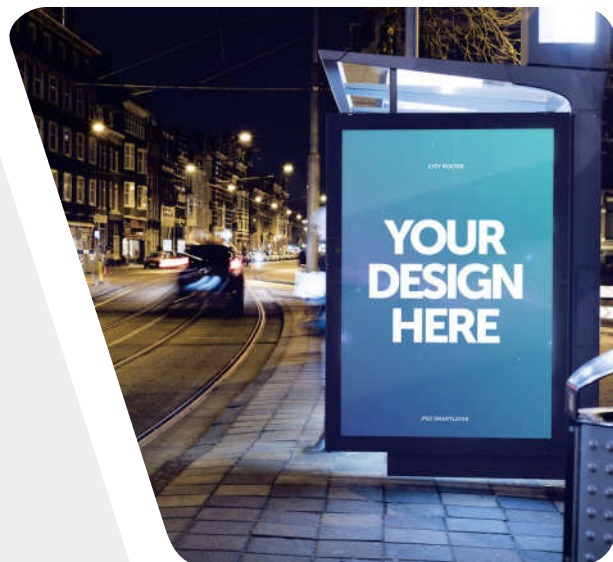
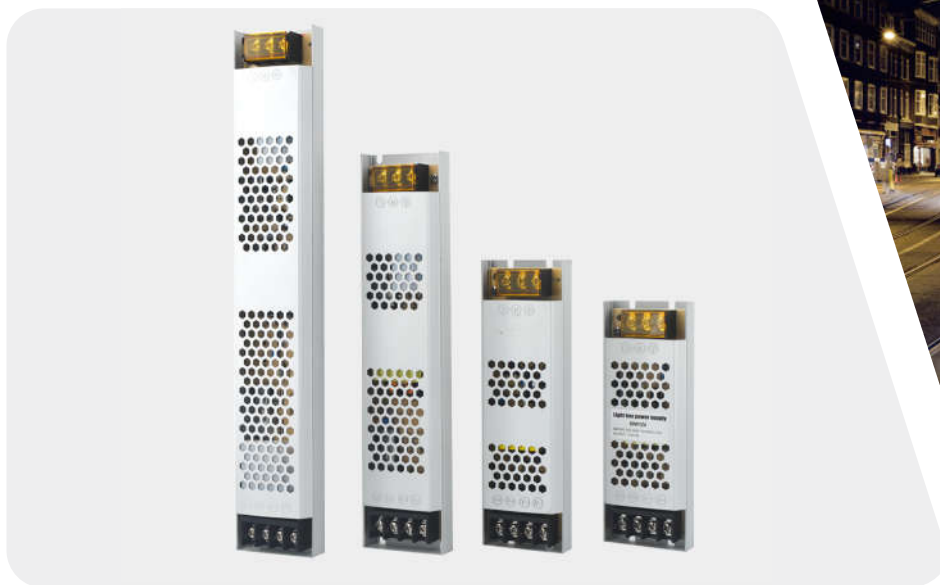


# DX SLIM LIGHTING BOX SERIES

12V/24V 60W- 400W



\*LED Strip Lights, Commercial Lighting, Neon and Accent Lighting, LED Signs and Lightboxes, Smart Home Lighting

## FEATURE

- ◎ Two years warranty
- ◎ 100% Load burn-in test
- ◎ Built-in EMI filter
- ◎ Output over-voltage, over-current and short-circuit protection
- ◎ Ultra slim design, suitable narrow install
- ◎ Low output ripple and noise
- ◎ Average no trouble working >20,000 hours

## PRODUCT PARAMETERS



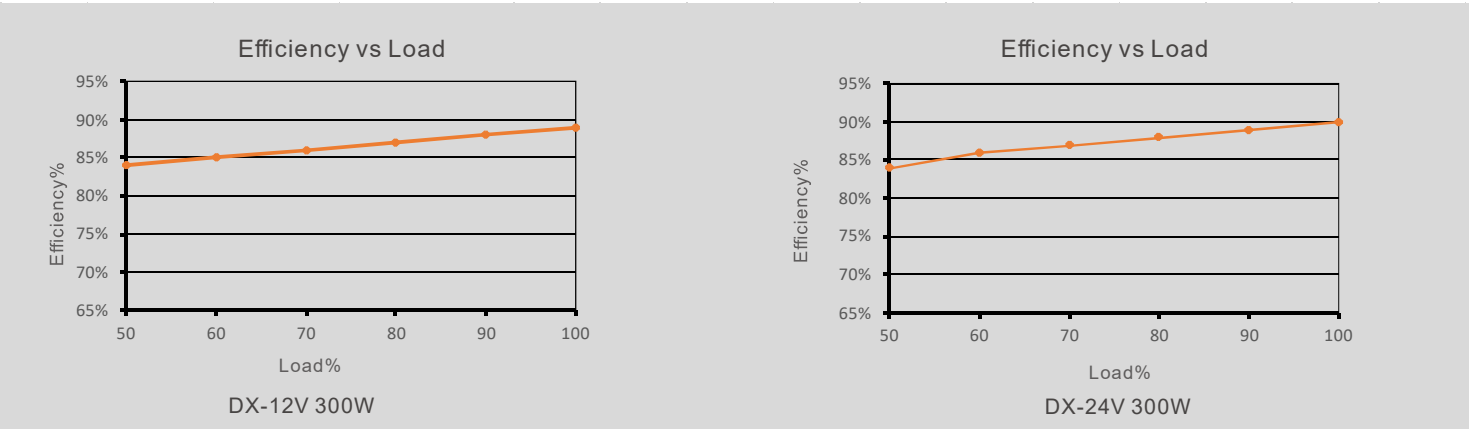
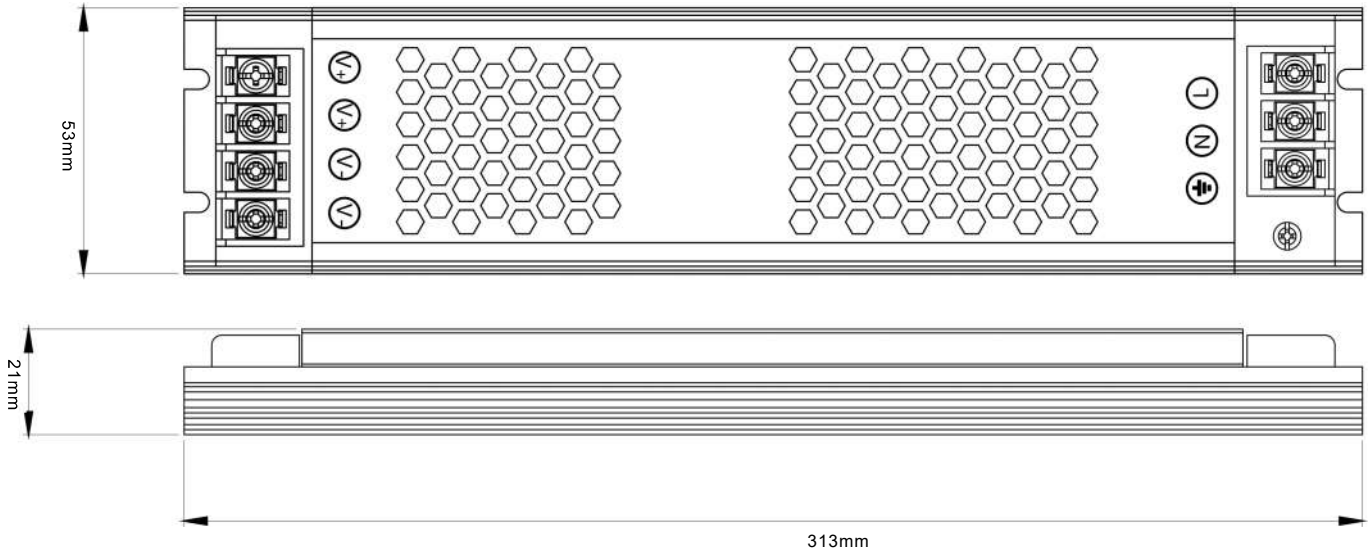
| Model         | Pout | Vin         | Vout      | Iout        | Effi | IP   | Size(mm)  | Pcs/Ctn |
|---------------|------|-------------|-----------|-------------|------|------|-----------|---------|
| DX-60-12      | 60W  | 200-240V AC | DC12V/24V | 5.0A/2.5A   | 89%  | IP20 | 148*53*21 | 85      |
| DX-100-12     | 100W | 200-240V AC | DC12V/24V | 8.3A/4.1A   | 89%  | IP20 | 172*53*21 | 85      |
| DX-150-12     | 150W | 200-240V AC | DC12V/24V | 12.5A/6.25A | 85%  | IP20 | 234*53*18 | 78      |
| DX-200-12     | 200W | 200-240V AC | DC12V/24V | 16.7A/8.3A  | 85%  | IP20 | 313*53*21 | 60      |
| DX-300-12 FAN | 300W | 200-240V AC | DC12V/24V | 25.0A/12.5A | 85%  | IP20 | 313*53*21 | 60      |
| DX-400-12 FAN | 400W | 200-240V AC | DC12V/24V | 33.0A/16.7A | 85%  | IP20 | 313*53*21 | 60      |

**Order now**  
[www.mijiled.en.alibaba.com](http://www.mijiled.en.alibaba.com)

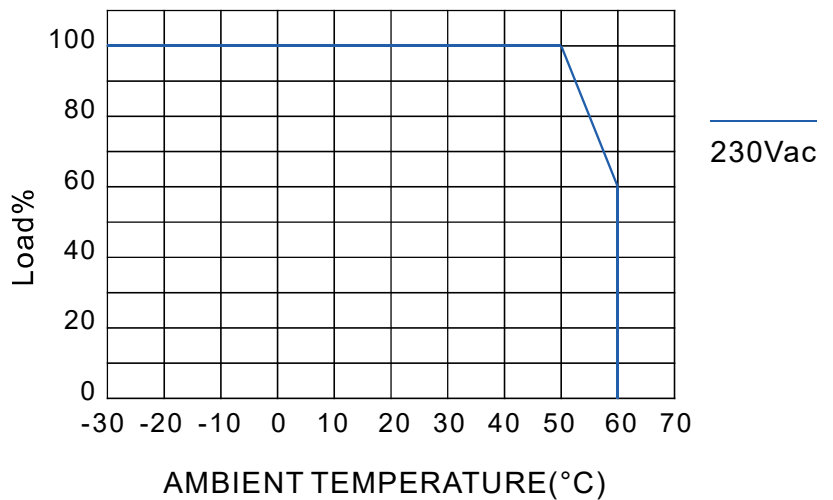
# DX SLIM LIGHTING BOX SERIES

| Model      |   | DX-200W 12V   | DX-200W 24V |
|------------|---|---|-------------|
| OUTPUT     | DC voltage  | 12V   | 24V         |
|            | Rated current   | 16.7A   | 8.3A        |
|            | Cuttent range   | 0-16.7A   | 0-8.3A      |
|            | Rated output power  | 200W  | 200W        |
|            | Ripples and noise   | ≤200mVp-p   | ≤300mVp-p   |
|            | Output current range  | 11.5-12.5V  | 23-25V      |
|            | Precision of output voltage regulation  | ±0.5%   | ±0.5%       |
|            | Rate of lenear adjustment   | ±0.5%   | ±0.5%       |
|            | Load adjustment rate  | ±0.5%   | ±0.5%       |
|            | The startup time  | ≤2s/230VAC  |             |
| INPUT      | Keep time   | 10ms/230VAC   |             |
|            | Voltage range   | 176-264VAC  |             |
|            | Frequency range   | 50Hz  |             |
|            | Power factor  | PF≥0.6/230VAC   |             |
|            | Efficiency  | ≥89%  | ≥91%        |
|            | Alternating current   | 3.4A/230VAC   |             |
|            | Surge current   | 50A/230VAC  |             |
|            | Leakage current   | <5mA/230VAC   |             |
| PROTECTION | Overload  | 110%-140%: rated 110%-140% of the total power input<br>protection mode:Auto recovery mode.the system automatically recovers when abnormal load conditions are removed |             |
|            | Short circuit   | protection mode:Auto recovery mode.the system automatically recovers when abnormal load conditions are removed  |             |
|            | Over voltage  | protection mode:self-recovery mode,automatic recovery when the overvoltage is removed   |             |
|            | Over temperature  | protection mode:self-recovery mode,automatically recover when the temperature drops   |             |
| ENVIRONMEN | working temperature   | -35~+50°C   |             |
|            | working humidity  | 20-90% RH   |             |
|            | storage temperature;humidity  | -30~+85°C; 10~95% RH  |             |
|            | temperature coefficient   | ±0.1%/°C(0-35°C)  |             |
|            | resistance to vibration   | 10-500Hz, 3G 10min. / 1 cycle, 60 min. each axes  |             |
| SAFETY&EMC | safety norms  | EN60950 , GB4943.1 -2011  |             |
|            | withstand voltage   | I/P-O/P:1.5KVAC I/P-FG:1.5KVAC O/P-FG:0.5KVAC   |             |
|            | insulation impedance  | I/P-O/P, I/P-FG, O/P-FG:100M Ohms / 500VDC / 25°C / 70% RH  |             |
|            | EMC   | --  |             |
| other      | protection grade  | IP20  |             |
|            | MTBF  | ≥30khour 25°C   |             |
|            | power supply size   | L313*W53*H21mm  |             |
|            | power supply weight   | 305g  |             |
| NOTE       | 1.Unless otherwise specified , all specification are measured at an input of 230VAC,rarted negative cut,and ambient temperature of 25°C   |   |             |
|            | 2.Ripple and noise measurement method:the measured end is connected in parallel with a 0.1uF+10uF capacitor,the oscilloscope is set to 20MHZ bandwidth,and the probe is tested with cap off and full load at 25°C |   |             |
|            | 3.Accuracy :includes setting error , linear adjustment rate and load adjustment rate .  |   |             |
|            | 4. The output power is reduced when the input voltage is less than 200VAC.  |   |             |

**DX-200W 12V**



**Temperature load curve**



**Packaging Information**

|             |                    |
|-------------|--------------------|
| DIMENSION   | 313*53*21(LxWxH)   |
| PACKING     | 319*56*24(LxWxH)   |
| PCS/CTN     | 60pcs              |
| CARTON SIZE | 510*320*245(LxWxH) |
| WEIGHT      | 305g±10g/PCS       |