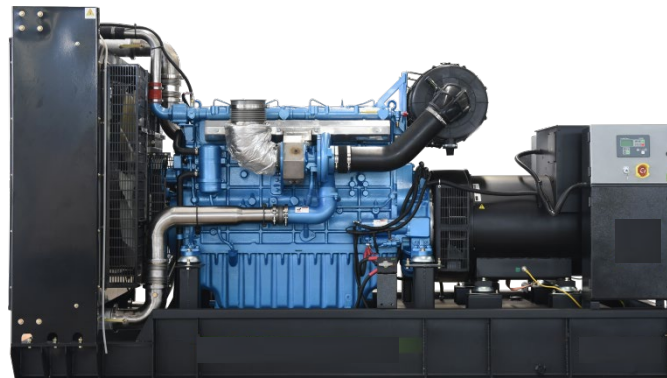


MODEL: HC-BD700 400V | 1500rpm | 50Hz



<b>ESP</b> Standby Power	<b>688 kVA</b>	<b>PRP</b> Prime Power	<b>625 kVA</b>
<b>ENGINE</b>	Baudouin	<b>ALTERNATOR</b>	STAMFORD
	6M33G715/5		S5L1D-E41

### GENERAL FEATURES

Engine: Baudouin 6M33G715/5	Alternator: single bearing, IP23, insulation class H
40°C radiator, fans are driven by belt, with safety guard	Dry type air filter, fuel filter & oil filter
Vibration damper	Standard control panel
24V charging alternator	Exhaust bellows, elbows, flange & muffler
Lead-acid batteries, rack and cables	User manual

MODEL: HC-BD700

400V | 1500rpm | 50Hz

## GENERATOR RATINGS

Voltage	Hz	Phase	PF (COS $\Phi$ )	Standby Amps	Standby Ratings (kW / kVA)	Prime Ratings (kW / kVA)
440/254	50	3	0.8	902	550kW/688kVA	500kW/625kVA
415/240	50	3	0.8	956	550kW/688kVA	500kW/625kVA
400/230	50	3	0.8	992	550kW/688kVA	500kW/625kVA
380/220	50	3	0.8	1045	550kW/688kVA	500kW/625kVA

**Prime Power (PRP):** Prime power is available for an unlimited number of annual hours in variable load application, in accordance with GB/T2820 (eqv ISO 8528) ; A 10% overload capability is available for a period of 1 hour within a 12-hour period of operation.

**Standby Power Rating (ESP):** The standby power rating is applicable for supplying emergency power for the duration of a utility power interruption. No overload, utility parallel or negotiated outage operation capability is available at this rating.

## SALES PROMISES

HiChai Power provides a full line of brand new and high quality products. Each and every unit is strictly factory tested.

Warranty is according to our standard conditions: One year after installation or 1000 running hours (accumulated), whichever comes first.

Service and parts are available from HiChai Power or distributors in your location.

MODEL: HC-BD700

400V | 1500rpm | 50Hz

## ENGINE SPECIFICATION

Manufacturer / Model	Baudouin 6M33G715/5
Air intake system	Turbo, intercooling
Fuel system	Mechanical pump
Cylinder arrangement	6 cylinders in line
Displacement	19.6 L
Bore and stroke	150×185 mm
Compression ratio	15:1
Rated speed	1500rpm
Max. Standby power at rated speed	633KW
Governor type	Electronic

## Exhaust System

Exhaust gas flow	140.7 m <sup>3</sup> /min
Exhaust temperature	550°C
Max back pressure	7.5 kPa

## Air Intake System

Max intake restriction	6.5 kPa
Combustion air flow	44 m <sup>3</sup> /min
Air flow required for radiator	783 m <sup>3</sup> /min

Comprehensive Solutions For

**POWER GENERATION**

MODEL: HC-BD700

400V | 1500rpm | 50Hz

**Fuel System**

Fuel consumption @ 100% (Prime Power) Load	199 g/kWh	130 L/h
Fuel consumption @ 75% (Prime Power) Load	195 g/kWh	97 L/h
Fuel consumption @ 50% (Prime Power) Load	196 g/kWh	67 L/h

**Oil System**

Total oil capacity	64L
Oil consumption ratio based on fuel consumption data	$\leq 0.3 \%$
Oil sump capacity	36~61L

**Cooling System**

Coolant capacity	159L
Max water temperature	105°C

MODEL: HC-BD700

400V | 1500rpm | 50Hz

## ALTERNATOR SPECIFICATION

Industrial alternators meet the requirements of the relevant parts of the BS5000, VDE 0530, NEMA MG1-22, IEC34, CSA 22.2-100 and AS1359.

### Alternator Data

Number of Phase	3
Connecting Type	3 Phase and 4 Wires, Y type connecting
Number of Bearing	1
Power Factor	0.8
Protection Class	IP23
Altitude	≤1000m
Exciter Type	Brushless exciting
Insulation Class/Temperature Rise	H/H
Telephone Influence Factor (TIF)	< 50
THF	< 2%
Alternator Capacity	625kVA
Alternator Efficiency	94.8%

MODEL: HC-BD700

400V | 1500rpm | 50Hz

## GENERATING SET DATA

Related range of voltage setting	$\geq \pm 5\%$
Steady-state voltage deviation	$\leq \pm 1\%$
Transient voltage deviation (100 % sudden power decrease)	$\leq +25\%$
Transient voltage deviation (sudden power increase)	$\leq -20\%$
Voltage recovery time (100 % sudden power decrease)	$\leq 6S$
Voltage recovery time (sudden power increase)	$\leq 6S$
Related range of frequency setting	0-5% adjustable
Steady-state frequency band	$\leq 1.5\%$
Transient frequency deviation (100 % sudden power decrease)	$\leq +12\%$
Transient frequency deviation (sudden power increase)	$\leq -10\%$
Frequency recovery time (100 % sudden power decrease)	$\leq 5S$
Frequency recovery time (sudden power increase)	$\leq 5S$

## STANDARD FEATURES

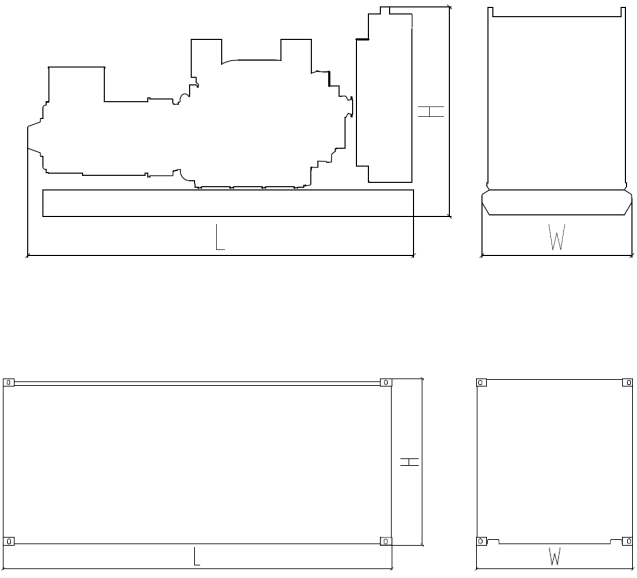
Standard auto control system	Exhaust system (including until muffler)	Documents
Oil drain valve	Starting batteries (maintenance-free & watering-free) with connective wires	MCCB

MODEL: HC-BD700 400V | 1500rpm | 50Hz

## OPTIONS

Daily fuel tank	Rainproof type	Remote control panel
Alternator heater	Soundproof type	Paralleling system
Spare parts	Trailer type	Switch box
Automatic transfer switch		

## DIMENSIONS & WEIGHT



<b>Standard Configuration (open type)</b>
Overall Dimensions: 3800×1640×2050 mm
Weight: 5280 kg
<b>Soundproof Type</b>
Overall Dimensions: 5530×1860×2550 mm
Weight: 7380 kg

*Specifications are subject to change without notice.*