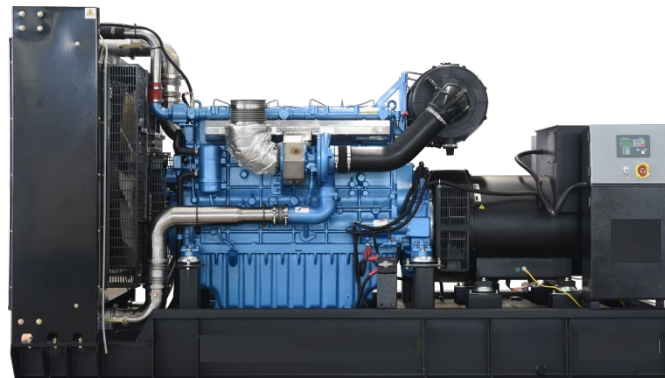


MODEL: HC-BD660 400V | 1500rpm | 50Hz



ESP Standby Power	660 kVA	PRP Prime Power	600 kVA
ENGINE	Baudouin	ALTERNATOR	STAMFORD
	8M21G6D3/5		S5L1D-E41

GENERAL FEATURES

Engine: Baudouin 8M21G6D3/5	Alternator: single bearing, IP23, insulation class H
40°C radiator, fans are driven by belt, with safety guard	Dry type air filter, fuel filter & oil filter
Vibration damper	Standard control panel
24V charging alternator	Exhaust bellows, elbows, flange & muffler
Lead-acid batteries, rack and cables	User manual

MODEL: HC-BD660

400V | 1500rpm | 50Hz

GENERATOR RATINGS

Voltage	Hz	Phase	PF (COS Φ)	Standby Amps	Standby Ratings (kW / kVA)	Prime Ratings (kW / kVA)
440/254	50	3	0.8	866	528kW/660kVA	480kW/600kVA
415/240	50	3	0.8	918	528kW/660kVA	480kW/600kVA
400/230	50	3	0.8	953	528kW/660kVA	480kW/600kVA
380/220	50	3	0.8	1003	528kW/660kVA	480kW/600kVA

Prime Power (PRP): Prime power is available for an unlimited number of annual hours in variable load application, in accordance with GB/T2820 (eqv ISO 8528) ; A 10% overload capability is available for a period of 1 hour within a 12-hour period of operation.

Standby Power Rating (ESP): The standby power rating is applicable for supplying emergency power for the duration of a utility power interruption. No overload, utility parallel or negotiated outage operation capability is available at this rating.

SALES PROMISES

HiChai Power provides a full line of brand new and high quality products. Each and every unit is strictly factory tested.

Warranty is according to our standard conditions: One year after installation or 1000 running hours (accumulated), whichever comes first.

Service and parts are available from HiChai Power or distributors in your location.

MODEL: HC-BD660

400V | 1500rpm | 50Hz

ENGINE SPECIFICATION

Manufacturer / Model	Baudouin 8M21G6D3/5
Air intake system	Turbo, intercooling
Fuel system	High Pressure Common Rail
Cylinder arrangement	8 cylinders in V
Displacement	16.72 L
Bore and stroke	127×165 mm
Compression ratio	15:1
Rated speed	1500rpm
Max. Standby power at rated speed	615KW
Governor type	ECU

Exhaust System

Exhaust gas flow	137 m ³ /min
Exhaust temperature	600°C
Max back pressure	7.5 kPa

Air Intake System

Max intake restriction	6.5 kPa
Combustion air flow	38 m ³ /min
Air flow required for radiator	800 m ³ /min

MODEL: HC-BD660

400V | 1500rpm | 50Hz

Fuel System

Fuel consumption @ 100% (Prime Power) Load	203 g/kWh	128 L/h
Fuel consumption @ 75% (Prime Power) Load	204 g/kWh	98 L/h
Fuel consumption @ 50% (Prime Power) Load	209 g/kWh	69 L/h

Oil System

Total oil capacity	45L
Oil consumption ratio based on fuel consumption data	≤ 0.2%
Oil sump capacity	37~44L

Cooling System

Coolant capacity	101L
Max water temperature	103°C

MODEL: HC-BD660

400V | 1500rpm | 50Hz

ALTERNATOR SPECIFICATION

Industrial alternators meet the requirements of the relevant parts of the BS5000, VDE 0530, NEMA MG1-22, IEC34, CSA 22.2-100 and AS1359.

Alternator Data

Number of Phase	3
Connecting Type	3 Phase and 4 Wires, Y type connecting
Number of Bearing	1
Power Factor	0.8
Protection Class	IP23
Altitude	≤1000m
Exciter Type	Brushless exciting
Insulation Class/Temperature Rise	H/H
Telephone Influence Factor (TIF)	< 50
THF	< 2%
Alternator Capacity	610kVA
Alternator Efficiency	94.9%

MODEL: HC-BD660

400V | 1500rpm | 50Hz

GENERATING SET DATA

Related range of voltage setting	$\geq \pm 5\%$
Steady-state voltage deviation	$\leq \pm 1\%$
Transient voltage deviation (100 % sudden power decrease)	$\leq +20\%$
Transient voltage deviation (sudden power increase)	$\leq -15\%$
Voltage recovery time (100 % sudden power decrease)	$\leq 4S$
Voltage recovery time (sudden power increase)	$\leq 4S$
Related range of frequency setting	0-5% adjustable
Steady-state frequency band	$\leq 0.5\%$
Transient frequency deviation (100 % sudden power decrease)	$\leq +10\%$
Transient frequency deviation (sudden power increase)	$\leq -7\%$
Frequency recovery time (100 % sudden power decrease)	$\leq 3S$
Frequency recovery time (sudden power increase)	$\leq 3S$

STANDARD FEATURES

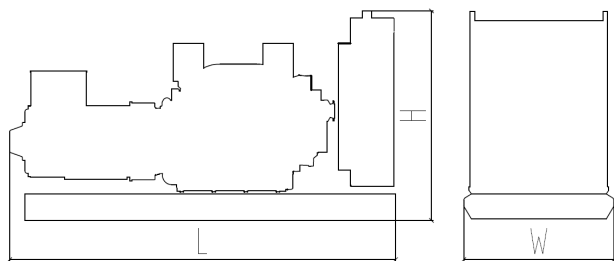
Standard auto control system	Exhaust system (including until muffler)	Documents
Oil drain valve	Starting batteries (maintenance-free & watering-free) with connective wires	MCCB

MODEL: HC-BD660 400V | 1500rpm | 50Hz

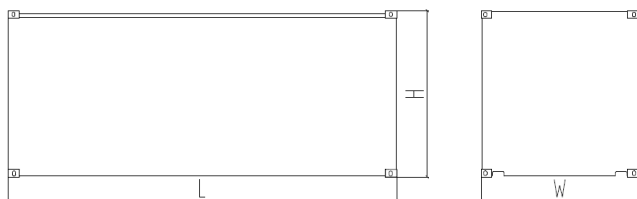
OPTIONS

Daily fuel tank	Rainproof type	Remote control panel
Alternator heater	Soundproof type	Paralleling system
Spare parts	Trailer type	Switch box
Automatic transfer switch		

DIMENSIONS & WEIGHT



Standard Configuration (open type)
Overall Dimensions: 3210×1360×1950 mm
Weight: 4200 kg



Soundproof Type
Overall Dimensions: 5030×1860×2550 mm
Weight: 6150 kg

Specifications are subject to change without notice.