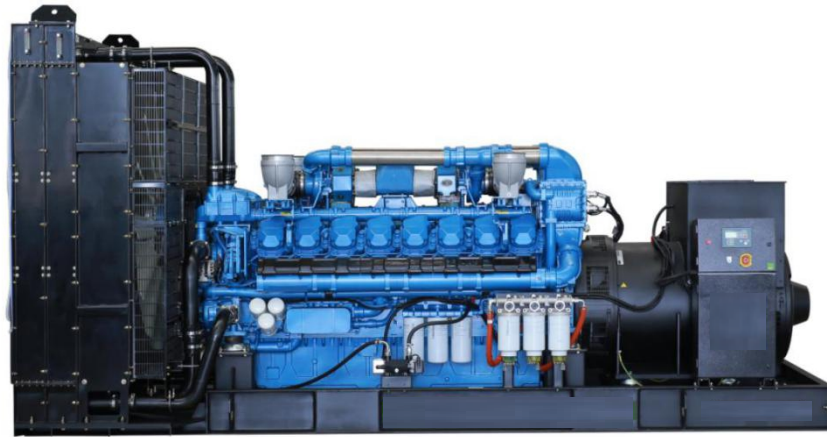


**MODEL: HC-BD1900-60**

**440V | 1800rpm | 60Hz**



<b>ESP</b> Standby Power	<b>1900kVA</b>	<b>PRP</b> Prime Power	<b>1750kVA</b>
<b>ENGINE</b>	<b>Baudouin</b>	<b>ALTERNATOR</b>	<b>STAMFORD</b>
	<b>16M33G1500/6</b>		<b>PI734C1</b>

## GENERAL FEATURES

Engine: Baudouin 16M33G1500/6

Alternator: single bearing, IP23, insulation class H

40°C radiator, fans are driven by belt, with safety guard

Dry type air filter, fuel filter & oil filter

Vibration damper

Standard control panel

24V charging alternator

Exhaust bellows, elbows, flange & muffler

Lead-acid batteries, rack and cables

User manual

**MODEL: HC-BD1900-60****440V | 1800rpm | 60Hz****GENERATOR RATINGS**

Voltage	Hz	Phase	PF ( COS $\Phi$ )	Standby Amps	Standby Ratings (kW / kVA)	Prime Ratings (kW / kVA)
480/277	60	3	0.8	2285	1520kW/1900kVA	1400kW/1750kVA
460/266	60	3	0.8	2385	1520kW/1900kVA	1400kW/1750kVA
440/254	60	3	0.8	2493	1520kW/1900kVA	1400kW/1750kVA
416/240	60	3	0.8	2637	1520kW/1900kVA	1400kW/1750kVA

Prime Power (PRP): Prime power is available for an unlimited number of annual hours in variable load application, in accordance with GB/T2820 ( eqv ISO 8528 ) ; A 10% overload capability is available for a period of 1 hour within a 12-hour period of operation.

Standby Power Rating (ESP): The standby power rating is applicable for supplying emergency power for the duration of a utility power interruption. No overload, utility parallel or negotiated outage operation capability is available at this rating.

**SALES PROMISES**

HiChai Power provides a full line of brand new and high quality products. Each and every unit is strictly factory tested.

Warranty is according to our standard conditions: One year after installation or 1000 running hours (accumulated), whichever comes first.

Service and parts are available from HiChai Power or distributors in your location.

**MODEL: HC-BD1900-60****440V | 1800rpm | 60Hz****ENGINE SPECIFICATION**

Manufacturer / Model	Baudouin 16M33G1500/6
----------------------	-----------------------

Air intake system	Turbocharged and Aftercooled
-------------------	------------------------------

Fuel system	High Pressure Common Rail
-------------	---------------------------

Cylinder arrangement	16 in V
----------------------	---------

Displacement	52.3L
--------------	-------

Bore and stroke	150 × 185 mm
-----------------	--------------

Compression ratio	15
-------------------	----

Rated speed	1800rpm
-------------	---------

Max. Standby power at rated speed	1680kW
-----------------------------------	--------

Governor type	ECU
---------------	-----

**Exhaust System**

Exhaust gas flow	384.8 m <sup>3</sup> /min
------------------	---------------------------

Exhaust temperature	550°C
---------------------	-------

Max back pressure	7.5kPa
-------------------	--------

**Air Intake System**

Max intake restriction	5kPa
------------------------	------

Combustion air flow	128 m <sup>3</sup> /min
---------------------	-------------------------

Air flow required for radiator	2340 m <sup>3</sup> /min
--------------------------------	--------------------------

Comprehensive Solutions For

**POWER GENERATION**

**MODEL: HC-BD1900-60****440V | 1800rpm | 60Hz****Fuel System**

Fuel consumption @ 100% (Prime Power) Load	197.3g/kWh	356.4L/h
Fuel consumption @ 75% (Prime Power) Load	194.1g/kWh	267.7L/h
Fuel consumption @ 50% (Prime Power) Load	201.3g/kWh	190.9L/h

**Oil System**

Total oil capacity	175L
Oil sump capacity	114-171L
Oil fuel consumption ratio based on engine fuel consumption data	$\leq 0.3\%$

**Cooling System**

Coolant capacity	542L
Max water temperature	103°C

**MODEL: HC-BD1900-60****440V | 1800rpm | 60Hz**

## ALTERNATOR SPECIFICATION

Industrial alternators meet the requirements of the relevant parts of the BS5000, VDE 0530, NEMA MG1-22, IEC34, CSA 22.2-100 and AS1359.

### Alternator Data

Number of Phase	3
Connecting Type	3 Phase and 4 Wires, Y type connecting
Number of Bearing	1
Power Factor	0.8
Protection Class	IP23
Altitude	≤1000m
Exciter Type	Brushless exciting
Insulation Class/Temperature Rise	H/H
Telephone Influence Factor (TIF)	< 50
THF	< 2%
Alternator Capacity	1815kVA
Alternator Efficiency	95.2%

**MODEL: HC-BD1900-60**

**440V | 1800rpm | 60Hz**

## GENERATING SET DATA

Related range of voltage setting	$\geq \pm 5\%$
Steady-state voltage deviation	$\leq \pm 1\%$
Transient voltage deviation (100 % sudden power decrease)	$\leq +20\%$
Transient voltage deviation (sudden power increase)	$\leq -15\%$
Voltage recovery time (100 % sudden power decrease)	$\leq 4S$
Voltage recovery time (sudden power increase)	$\leq 4S$
Related range of frequency setting	0-5% adjustable
Steady-state frequency band	$\leq 0.5\%$
Transient frequency deviation (100 % sudden power decrease)	$\leq +10\%$
Transient frequency deviation (sudden power increase)	$\leq -7\%$
Frequency recovery time (100 % sudden power decrease)	$\leq 3S$
Frequency recovery time (sudden power increase)	$\leq 3S$

## STANDARD FEATURES

Standard auto control system	Exhaust system (including until muffler)	Documents
Oil drain valve	Starting batteries (maintenance-free & watering-free) with connective wires	

**MODEL: HC-BD1900-60**

**440V | 1800rpm | 60Hz**

**OPTIONS**

Daily fuel tank	Rainproof type	Remote control panel
Alternator heater	Soundproof type	Paralleling system
Spare parts	Trailer type	Switch box
Automatic transfer switch		

**DIMENSIONS & WEIGHT**



**Standard Configuration (open type)**

Overall Dimensions: 4750×2200×2430 mm

Weight: 9500 kg



**Soundproof Type (standard 40'ft HQ container)**

Overall Dimensions: 12192×2438×2896 mm

Weight: 19500 kg

*Specifications are subject to change without notice.*