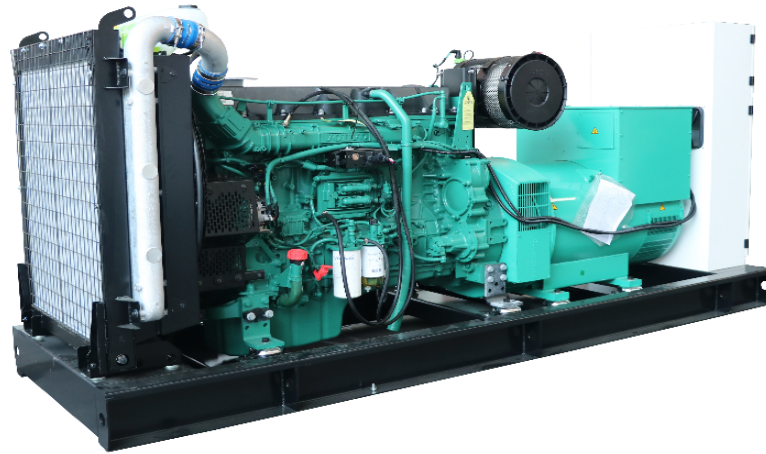


MODEL: H C -500GF

400V | 1500rpm | 50Hz



ESP Standby Power	688 kVA	PRP Prime Power	625 kVA
ENGINE	VOLVO TWD1643GE	ALTERNATOR	MECC ALTE ECO 40-1.5L

GENERAL FEATURES

Engine: VOLVO TWD1643GE	Alternator: single bearing, IP23, insulation class H
55°C radiator, fans are driven by belt, with safety guard	Dry type air filter, fuel filter & oil filter
Vibration damper	Standard control panel
24V charging alternator	Exhaust bellows, elbows, flange & muffler
Lead-acid batteries, rack and cables	User manual

MODEL: H C -500GF**400V | 1500rpm | 50Hz****GENERATOR RATINGS**

Voltage	Hz	Phase	PF (COS Φ)	Standby Amps	Standby Ratings (kW / kVA)	Prime Ratings (kW / kVA)
440/254	50	3	0.8	902	550/688	500/625
415/240	50	3	0.8	956	550/688	500/625
400/230	50	3	0.8	992	550/688	500/625
380/220	50	3	0.8	1044	550/688	500/625

Prime Power (PRP): Prime power is available for an unlimited number of annual hours in variable load application, in accordance with GB/T2820 (eqv ISO8528) ; A 10% overload capability is available for a period of 1 hour within a 12-hour period of operation.

Standby Power Rating (ESP): The standby power rating is applicable for supplying emergency power for the duration of a utility power interruption. No overload, utility parallel or negotiated outage operation capability is available at this rating.

SALES PROMISES

Baifa Power provides a full line of brand new and high quality products. Each and every unit is strictly factory tested.

Warranty is according to our standard conditions: 15 months from the date BAIFA sold to the first buyer or one year after installation or 1000 running hours (accumulated), whichever comes first.

Service and parts are available from Baifa Power or distributors in your location.

Comprehensive Solutions For

POWER GENERATION

MODEL: H C -500GF**400V | 1500rpm | 50Hz****ENGINE SPECIFICATION**

Manufacturer / Model	VOLVO/TWD1643GE
Air intake system	Turbocharged, Water/Air inter cooling
Fuel system	Elec. Injection, Elec. Fuel System
Cylinder arrangement	6 in line
Displacement	16.12L
Bore and stroke	144*165 (mm)
Compression ratio	16.5
Rated speed	1500rpm
Max. Standby power at rated speed	596KW/811HP (with fan)
Governor type	EMS2

Exhaust System

Exhaust gas flow	111.8 m ³ / min
Exhaust temperature	463°C
Max back pressure	10 kPa

Air Intake System

Max intake restriction	5 kPa
Combustion air flow	47 m ³ /min
Air flow required for radiator	780 m ³ /min

Comprehensive Solutions For

POWER GENERATION

MODEL: H C -500GF**400V | 1500rpm | 50Hz****Fuel System**

Fuel consumption @ 100% (Prime Power) Load	199 g/kWh	123 L/h
Fuel consumption @ 75% (Prime Power) Load	196 g/kWh	91 L/h
Fuel consumption @ 50% (Prime Power) Load	196 g/kWh	61 L/h

Oil System

Total oil capacity	48L
Oil consumption	0.11L/h
Oil sump capacity	32~42L

Cooling System

Coolant capacity	166 L
Max water temperature	103°C

MODEL: H C -500GF

400V | 1500rpm | 50Hz

ALTERNATOR SPECIFICATION

Alternator Data

Number of Phase	3
Connecting Type	3 Phase and 4 Wires, Y type connecting
Number of Bearing	1
Power Factor	0.8
Protection Class	IP23
Altitude	≤1000m
Exciter Type	Brushless exciting
Insulation Class/Temperature Rise	H/H
Telephone Influence Factor (TIF)	< 50
THF	< 2%
Alternator Capacity	625kVA
Alternator Efficiency	95.0%

MODEL: H C -500GF

400V | 1500rpm | 50Hz

GENERATING SET DATA

Related range of voltage setting	$\geq \pm 5\%$
Steady-state voltage deviation	$\leq \pm 1\%$
Transient voltage deviation (100 % sudden power decrease)	$\leq +20\%$
Transient voltage deviation (sudden power increase)	$\leq -15\%$
Voltage recovery time (100 % sudden power decrease)	$\leq 4S$
Voltage recovery time (sudden power increase)	$\leq 4S$
Related range of frequency setting	0-5% adjustable
Steady-state frequency band	$\leq 0.5\%$
Transient frequency deviation (100 % sudden power decrease)	$\leq +10\%$
Transient frequency deviation (sudden power increase)	$\leq -7\%$
Frequency recovery time (100 % sudden power decrease)	$\leq 3S$
Frequency recovery time (sudden power increase)	$\leq 3S$

STANDARD FEATURES

Standard auto control system	Exhaust system(including until muffler)	Documents
Oil drain valve	Starting batteries (maintenance-free & watering-free) with connective wires	Special coolant

MCCB

MODEL: H C -500GF

400V | 1500rpm | 50Hz

OPTIONS

Daily fuel tank	Rainproof type	Remote control panel
Alternator heater	Soundproof type	Paralleling system
Spare parts	Trailer type	Switch box
Automatic transfer switch		

DIMENSIONS & WEIGHT



Standard Configuration (open type)
Overall Dimensions: 3350×1400×2050 mm
Weight: 4050 kg
Standard Configuration (with base fuel tank)
Overall Dimensions: 3350×1400×2050 mm
Weight: 4350 kg
Soundproof Type
Overall Dimensions: 5030×1660×2550 mm
Weight: 6060 kg

Specifications are subject to change without notice.