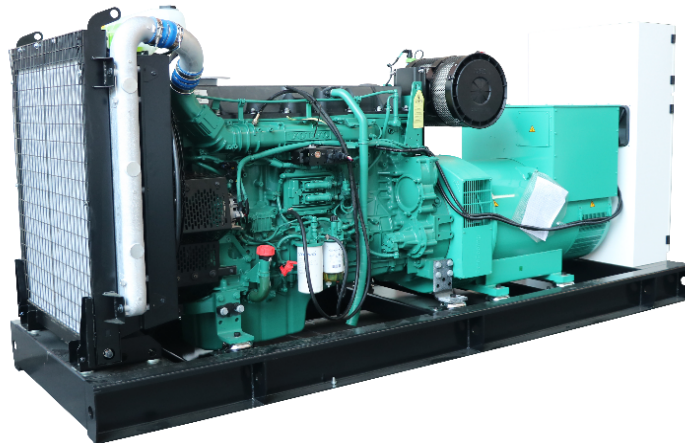


**MODEL: H C -320GF**

**400V | 1500rpm | 50Hz**



<b>ESP</b> Standby Power	<b>450 kVA</b>	<b>PRP</b> Prime Power	<b>410 kVA</b>
<b>ENGINE</b>	<b>VOLVO</b>	<b>ALTERNATOR</b>	<b>STAMFORD</b>
	<b>TAD1344GE</b>		<b>S4L1D-F41</b>

## GENERAL FEATURES

Engine: VOLVO TAD1344GE

Alternator: single bearing, IP23, insulation class H

55°C radiator, fans are driven by belt, with safety guard

Dry type air filter, fuel filter & oil filter

Vibration damper

Standard control panel

24V charging alternator

Exhaust bellows, elbows, flange & muffler

Lead-acid batteries, rack and cables

User manual

**MODEL: H C -320GF**

**400V | 1500rpm | 50Hz**

## GENERATOR RATINGS

Voltage	Hz	Phase	PF ( COSΦ )	Standby Amps	Standby Ratings (kW / kVA)	Prime Ratings ( kW / kVA)
440/254	50	3	0.8	590	360/450	328/410
415/240	50	3	0.8	626	360/450	328/410
400/230	50	3	0.8	650	360/450	328/410
380/220	50	3	0.8	684	360/450	328/410

**Prime Power (PRP):** Prime power is available for an unlimited number of annual hours in variable load application, in accordance with GB/T2820 (eqv ISO8528) ; A 10% overload capability is available for a period of 1 hour within a 12-hour period of operation.

**Standby Power Rating (ESP):** The standby power rating is applicable for supplying emergency power for the duration of a utility power interruption. No overload, utility parallel or negotiated outage operation capability is available at this rating.

## SALES PROMISES

Baifa Power provides a full line of brand new and high quality products. Each and every unit is strictly factory tested.

Warranty is according to our standard conditions: 15 months from the date BAIFA sold to the first buyer or one year after installation or 1000 running hours (accumulated), whichever comes first.

Service and parts are available from Baifa Power or distributors in your location.

**MODEL: H C -320GF****400V | 1500rpm | 50Hz****ENGINE SPECIFICATION**

Manufacturer / Model	VOLVO/TAD1344GE
Air intake system	Turbocharged, Air/Air inter cooling
Fuel system	Elec. Injection, Elec. Fuel System
Cylinder arrangement	6 in line
Displacement	12.78 L
Bore and stroke	131*158 (mm)
Compression ratio	18.1
Rated speed	1500rpm
Max. Standby power at rated speed	389KW/529HP (with fan)
Governor type	EMS2

**Exhaust System**

Exhaust gas flow	67.5 m <sup>3</sup> / min
Exhaust temperature	465°C
Max back pressure	10 kPa

**Air Intake System**

Max intake restriction	5 kPa
Combustion air flow	28 m <sup>3</sup> /min
Air flow required for radiator	348 m <sup>3</sup> /min

Comprehensive Solutions For

**POWER GENERATION**

**MODEL: H C -320GF**

**400V | 1500rpm | 50Hz**

**Fuel System**

Fuel consumption @ 100% (Prime Power) Load	194 g/kWh	80.3 L/h
Fuel consumption @ 75% (Prime Power) Load	197 g/kWh	60.5 L/h
Fuel consumption @ 50% (Prime Power) Load	200 g/kWh	41 L/h

**Oil System**

Total oil capacity	36L
Oil consumption	0.04L/h
Oil sump capacity	19~30L

**Cooling System**

Coolant capacity	44 L
Max water temperature	107°C

**MODEL: H C -320GF****400V | 1500rpm | 50Hz**

## ALTERNATOR SPECIFICATION

Industrial alternators meet the requirements of the relevant parts of the BS5000, VDE 0530, NEMA MG1-22, IEC34, CSA 22.2-100 and AS1359.

### Alternator Data

Number of Phase	3
Connecting Type	3 Phase and 4 Wires, Y type connecting
Number of Bearing	1
Power Factor	0.8
Protection Class	IP23
Altitude	≤1000m
Exciter Type	Brushless exciting
Insulation Class/Temperature Rise	H/H
Telephone Influence Factor (TIF)	< 50
THF	< 2%
Alternator Capacity	415kVA
Alternator Efficiency	93.2%

**MODEL: H C -320GF****400V | 1500rpm | 50Hz****GENERATING SET DATA**

Related range of voltage setting	$\geq \pm 5\%$
Steady-state voltage deviation	$\leq \pm 1\%$
Transient voltage deviation (100 % sudden power decrease)	$\leq +20\%$
Transient voltage deviation (sudden power increase)	$\leq -15\%$
Voltage recovery time (100 % sudden power decrease)	$\leq 4S$
Voltage recovery time (sudden power increase)	$\leq 4S$
Related range of frequency setting	0-5% adjustable
Steady-state frequency band	$\leq 0.5\%$
Transient frequency deviation (100 % sudden power decrease)	$\leq +10\%$
Transient frequency deviation (sudden power increase)	$\leq -7\%$
Frequency recovery time (100 % sudden power decrease)	$\leq 3S$
Frequency recovery time (sudden power increase)	$\leq 3S$

**STANDARD FEATURES**

Standard auto control system	Exhaust system( including until muffler)	Documents
Oil drain valve	Starting batteries ( maintenance-free & watering-free) with connective wires	Special coolant

MCCB

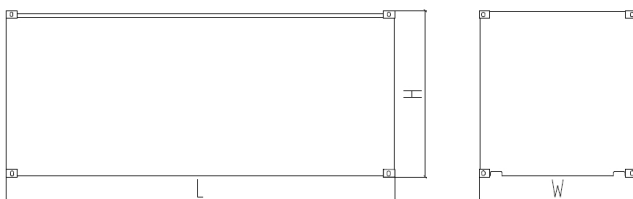
**MODEL: H C -320GF**

**400V | 1500rpm | 50Hz**

**OPTIONS**

Daily fuel tank	Rainproof type	Remote control panel
Alternator heater	Soundproof type	Paralleling system
Spare parts	Trailer type	Switch box
Automatic transfer switch		

**DIMENSIONS & WEIGHT**



<b>Standard Configuration (open type)</b>
Overall Dimensions: 3150×1200×1830 mm
Weight: 3000 kg
<b>Standard Configuration (with base fuel tank)</b>
Overall Dimensions: 3150×1200×1830 mm
Weight: 3100 kg
<b>Soundproof Type</b>
Overall Dimensions: 4090×1460×2150 mm
Weight: 4400 kg

*Specifications are subject to change without notice.*