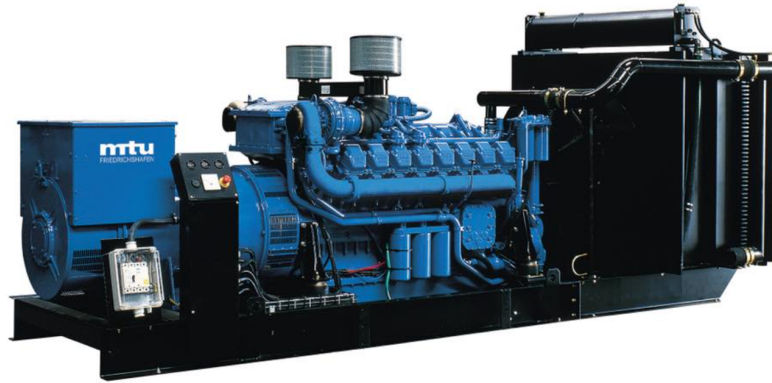


MODEL: HC-2750GF2-G14S

440V | 1800rpm | 60Hz



ESP Standby Power	3125kVA	PRP Prime Power	2813kVA
ENGINE	MTU 20V4000G14S	ALTERNATOR	MECC ALTE EC046-2L

GENERAL FEATURES

Engine: MTU 20V4000G14S

Alternator: single bearing, IP23, insulation class H

40°C radiator, fans are driven by motor, with safety guard

Dry type air filter, fuel filter & oil filter

Vibration damper

Standard control panel

24V charging alternator

Exhaust bellows, elbows, flange & muffler

Lead-acid batteries, rack and cables

User manual

MODEL: HC-2750GF2-G14S**440V | 1800rpm | 60Hz****GENERATOR RATINGS**

Voltage	Hz	Phase	PF (COS Φ)	Standby Amps	Standby Ratings (kW / kVA)	Prime Ratings (kW / kVA)
480/277	60	3	0.8	3759	2500kW/3125kVA	2250kW/2813kVA
460/266	60	3	0.8	3922	2500kW/3125kVA	2250kW/2813kVA
440/254	60	3	0.8	4101	2500kW/3125kVA	2250kW/2813kVA
416/240	60	3	0.8	4337	2500kW/3125kVA	2250kW/2813kVA

Prime Power (PRP): Prime power is available for an unlimited number of annual hours in variable load application, in accordance with GB/T2820 (eqv ISO 8528) ; A 10% overload capability is available for a period of 1 hour within a 12-hour period of operation.

Standby Power Rating (ESP): The standby power rating is applicable for supplying emergency power for the duration of a utility power interruption. No overload, utility parallel or negotiated outage operation capability is available at this rating.

SALES PROMISES

Baifa Power provides a full line of brand new and high quality products. Each and every unit is strictly factory tested.

Warranty is according to our standard conditions: 15 months from the date BAIFA sold to the first buyer or one year after installation or 1000 running hours (accumulated), whichever comes first.

Service and parts are available from Baifa Power or distributors in your location.

MODEL: HC-2750GF2-G14S**440V | 1800rpm | 60Hz****ENGINE SPECIFICATION**

Manufacturer / Model	MTU 20V4000G14S
----------------------	-----------------

Air intake system	Turbocharged, water/air intercooling
-------------------	--------------------------------------

Fuel system	Electronic Fuel Injection System
-------------	----------------------------------

Cylinder arrangement	20 in V
----------------------	---------

Displacement	95.4L
--------------	-------

Bore and stroke	170×210 mm
-----------------	------------

Compression ratio	16.4
-------------------	------

Rated speed	1800rpm
-------------	---------

Max. Standby power at rated speed	2739kW
-----------------------------------	--------

Governor type	ADEC
---------------	------

Exhaust System

Exhaust gas flow	552 m ³ /min
------------------	-------------------------

Exhaust temperature	495°C
---------------------	-------

Max back pressure	8.5kPa
-------------------	--------

Air Intake System

Max intake restriction	5kPa
------------------------	------

Combustion air flow	225 m ³ /min
---------------------	-------------------------

Air flow required for radiator	3000 m ³ /min
--------------------------------	--------------------------

Comprehensive Solutions For

POWER GENERATION

MODEL: HC-2750GF2-G14S**440V | 1800rpm | 60Hz****Fuel System**

Fuel consumption @ 100% (Prime Power) Load	195g/kWh	555L/h
Fuel consumption @ 75% (Prime Power) Load	199g/kWh	430L/h
Fuel consumption @ 50% (Prime Power) Load	212g/kWh	315L/h

Oil System

Total oil capacity	390L
Oil consumption	0.3% of Fuel Consumption
Oil sump capacity	268-340L

Cooling System

Coolant capacity	547L
Max water temperature	102°C

MODEL: HC-2750GF2-G14S

440V | 1800rpm | 60Hz

ALTERNATOR SPECIFICATION

Alternator Data

Number of Phase	3
Connecting Type	3 Phase and 4 Wires, Y type connecting
Number of Bearing	1
Power Factor	0.8
Protection Class	IP23
Altitude	≤1000m
Exciter Type	Brushless exciting
Insulation Class/Temperature Rise	H/H
Telephone Influence Factor (TIF)	<50
THF	<2%
Alternator Capacity	2840kVA
Alternator Efficiency	97%

MODEL: HC-2750GF2-G14S**440V | 1800rpm | 60Hz****GENERATING SET DATA**

Related range of voltage setting	$\geq \pm 5\%$
Steady-state voltage deviation	$\leq \pm 1\%$
Transient voltage deviation (100 % sudden power decrease)	$\leq +20\%$
Transient voltage deviation (sudden power increase)	$\leq -15\%$
Voltage recovery time (100 % sudden power decrease)	$\leq 4S$
Voltage recovery time (sudden power increase)	$\leq 4S$
Related range of frequency setting	0-5% adjustable
Steady-state frequency band	$\leq 0.5\%$
Transient frequency deviation (100 % sudden power decrease)	$\leq +10\%$
Transient frequency deviation (sudden power increase)	$\leq -7\%$
Frequency recovery time (100 % sudden power decrease)	$\leq 3S$
Frequency recovery time (sudden power increase)	$\leq 3S$

STANDARD FEATURES

Standard auto control system	Exhaust system (including until muffler)	Documents
Oil drain valve	Starting batteries (maintenance-free & watering-free) with connective wires	Fuel-Water separator
Special coolant		

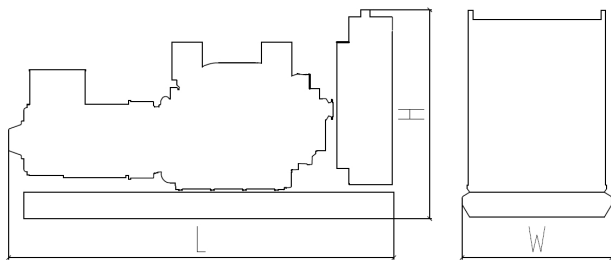
MODEL: HC-2750GF2-G14S

440V | 1800rpm | 60Hz

OPTIONS

Daily fuel tank	Rainproof type	Remote control panel
Alternator heater	Soundproof type	Paralleling system
Spare parts	Trailer type	Switch box
Automatic transfer switch		

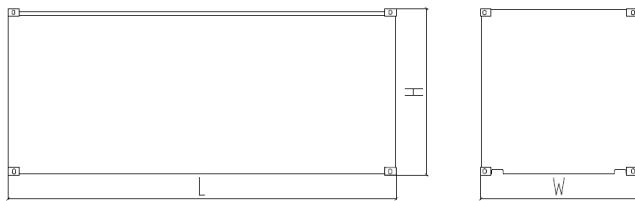
DIMENSIONS & WEIGHT



Standard Configuration (open type)

Overall Dimensions: 7700×2400×2750 mm

Weight: 19200kg



Soundproof Type (standard 40'ft HQ container)

Overall Dimensions: 12192×2438×2896 mm

Weight: 29200kg

Specifications are subject to change without notice.