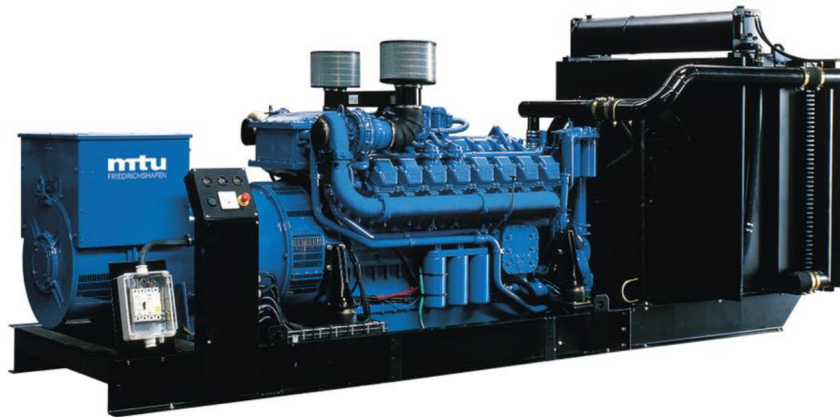


MODEL: HC-2500GF2-G24S

440V | 1800rpm | 60Hz



ESP Standby Power	2750kVA	PRP Prime Power	2500kVA
ENGINE	MTU	ALTERNATOR	STAMFORD
	16V4000G24S		PI734G1

GENERAL FEATURES

Engine: MTU 16V4000G24S

Alternator: single bearing, IP23, insulation class H

40°C radiator, fans are driven by motor, with safety guard

Dry type air filter, fuel filter & oil filter

Vibration damper

Standard control panel

24V charging alternator

Exhaust bellows, elbows, flange & muffler

Lead-acid batteries, rack and cables

User manual

MODEL: HC-2500GF2-G24S

440V | 1800rpm | 60Hz

GENERATOR RATINGS

Voltage	Hz	Phase	PF (COSΦ)	Standby Amps	Standby Ratings (kW / kVA)	Prime Ratings (kW / kVA)
480/277	60	3	0.8	3308	2200kW/2750kVA	2000kW/2500kVA
460/266	60	3	0.8	3452	2200kW/2750kVA	2000kW/2500kVA
440/254	60	3	0.8	3609	2200kW/2750kVA	2000kW/2500kVA
416/240	60	3	0.8	3817	2200kW/2750kVA	2000kW/2500kVA

Prime Power (PRP): Prime power is available for an unlimited number of annual hours in variable load application, in accordance with GB/T2820 (eqv ISO 8528) ; A 10% overload capability is available for a period of 1 hour within a 12-hour period of operation.

Standby Power Rating (ESP): The standby power rating is applicable for supplying emergency power for the duration of a utility power interruption. No overload, utility parallel or negotiated outage operation capability is available at this rating.

SALES PROMISES

Baifa Power provides a full line of brand new and high quality products. Each and every unit is strictly factory tested.

Warranty is according to our standard conditions: 15 months from the date BAIFA sold to the first buyer or one year after installation or 1000 running hours (accumulated), whichever comes first.

Service and parts are available from Baifa Power or distributors in your location.

MODEL: HC-2500GF2-G24S**440V | 1800rpm | 60Hz**

ENGINE SPECIFICATION

Manufacturer / Model	MTU 16V4000G24S
----------------------	-----------------

Air intake system	Turbocharged, water/air intercooling
-------------------	--------------------------------------

Fuel system	Electronic Fuel Injection System
-------------	----------------------------------

Cylinder arrangement	16 in V
----------------------	---------

Displacement	76.3L
--------------	-------

Bore and stroke	170×210 mm
-----------------	------------

Compression ratio	16.4
-------------------	------

Rated speed	1800rpm
-------------	---------

Max. Standby power at rated speed	2508kW
-----------------------------------	--------

Governor type	ADEC
---------------	------

Exhaust System

Exhaust gas flow	504 m ³ /min
------------------	-------------------------

Exhaust temperature	505°C
---------------------	-------

Max back pressure	8.5kPa
-------------------	--------

Air Intake System

Max intake restriction	5kPa
------------------------	------

Combustion air flow	192 m ³ /min
---------------------	-------------------------

Air flow required for radiator	2340 m ³ /min
--------------------------------	--------------------------

Comprehensive Solutions For

POWER GENERATION

MODEL: HC-2500GF2-G24S**440V | 1800rpm | 60Hz****Fuel System**

Fuel consumption @ 100% (Prime Power) Load	200g/kWh	508L/h
Fuel consumption @ 75% (Prime Power) Load	198g/kWh	380L/h
Fuel consumption @ 50% (Prime Power) Load	207g/kWh	271L/h

Oil System

Total oil capacity	300L
Oil consumption	0.3% of Fuel Consumption
Oil sump capacity	210-240L

Cooling System

Coolant capacity	507L
Max water temperature	102°C

MODEL: HC-2500GF2-G24S**440V | 1800rpm | 60Hz**

ALTERNATOR SPECIFICATION

Industrial alternators meet the requirements of the relevant parts of the BS5000, VDE 0530, NEMA MG1-22, IEC34, CSA 22.2-100 and AS1359.

Alternator Data

Number of Phase	3
Connecting Type	3 Phase and 4 Wires, Y type connecting
Number of Bearing	1
Power Factor	0.8
Protection Class	IP23
Altitude	≤1000m
Exciter Type	Brushless exciting
Insulation Class/Temperature Rise	H/H
Telephone Influence Factor (TIF)	< 50
THF	< 2%
Alternator Capacity	2535kVA
Alternator Efficiency	96.0%

MODEL: HC-2500GF2-G24S**440V | 1800rpm | 60Hz****GENERATING SET DATA**

Related range of voltage setting	$\geq \pm 5\%$
Steady-state voltage deviation	$\leq \pm 1\%$
Transient voltage deviation (100 % sudden power decrease)	$\leq +20\%$
Transient voltage deviation (sudden power increase)	$\leq -15\%$
Voltage recovery time (100 % sudden power decrease)	$\leq 4S$
Voltage recovery time (sudden power increase)	$\leq 4S$
Related range of frequency setting	0-5% adjustable
Steady-state frequency band	$\leq 0.5\%$
Transient frequency deviation (100 % sudden power decrease)	$\leq +10\%$
Transient frequency deviation (sudden power increase)	$\leq -7\%$
Frequency recovery time (100 % sudden power decrease)	$\leq 3S$
Frequency recovery time (sudden power increase)	$\leq 3S$

STANDARD FEATURES

Standard auto control system	Exhaust system (including until muffler)	Documents
Oil drain valve	Starting batteries (maintenance-free & watering-free) with connective wires	Fuel-Water separator
Special coolant		

MODEL: HC-2500GF2-G24S

440V | 1800rpm | 60Hz

OPTIONS

Daily fuel tank	Rainproof type	Remote control panel
Alternator heater	Soundproof type	Paralleling system
Spare parts	Trailer type	Switch box
Automatic transfer switch		

DIMENSIONS & WEIGHT



Standard Configuration (open type)

Overall Dimensions: 6900×2350×2600 mm

Weight: 16600kg



Soundproof Type (standard 40'ft HQ container)

Overall Dimensions: 12192×2438×2896 mm

Weight: 26600kg

Specifications are subject to change without notice.