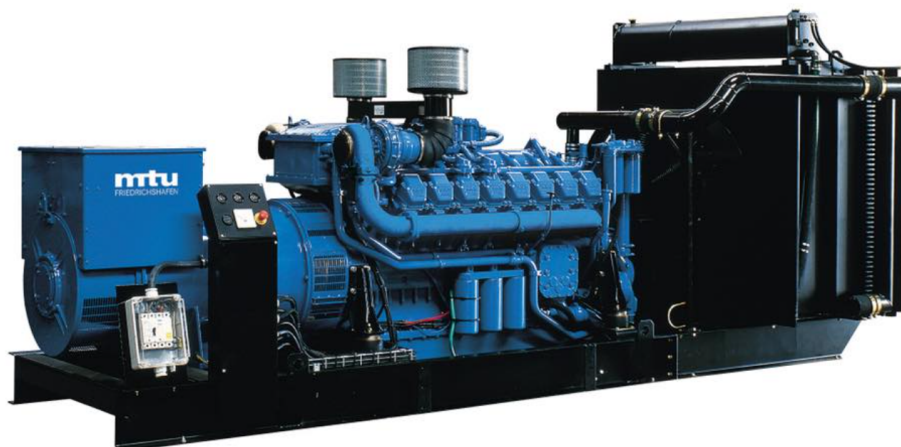


MODEL: HC-2250GF2-G43

440V | 1800rpm | 60Hz



ESP Standby Power	2500kVA	PRP Prime Power	2275kVA
ENGINE	MTU	ALTERNATOR	STAMFORD
	16V4000G43S		PI734F1

GENERAL FEATURES

Engine: MTU 16V4000G43S	Alternator: single bearing, IP23, insulation class H
40°C radiator, fans are driven by motor, with safety guard	Dry type air filter, fuel filter & oil filter
Vibration damper	Standard control panel
24V charging alternator	Exhaust bellows, elbows, flange & muffler
Lead-acid batteries, rack and cables	User manual

MODEL: HC-2250GF2-G43

440V | 1800rpm | 60Hz

GENERATOR RATINGS

Voltage	Hz	Phase	PF (COSΦ)	Standby Amps	Standby Ratings (kW / kVA)	Prime Ratings (kW / kVA)
480/277	60	3	0.8	3007	2000kW/2500kVA	1820kW/2275kVA
460/266	60	3	0.8	3138	2000kW/2500kVA	1820kW/2275kVA
440/254	60	3	0.8	3280	2000kW/2500kVA	1820kW/2275kVA
416/240	60	3	0.8	3470	2000kW/2500kVA	1820kW/2275kVA

Prime Power (PRP): Prime power is available for an unlimited number of annual hours in variable load application, in accordance with GB/T2820 (eqv ISO 8528) ; A 10% overload capability is available for a period of 1 hour within a 12-hour period of operation.

Standby Power Rating (ESP): The standby power rating is applicable for supplying emergency power for the duration of a utility power interruption. No overload, utility parallel or negotiated outage operation capability is available at this rating.

SALES PROMISES

Baifa Power provides a full line of brand new and high quality products. Each and every unit is strictly factory tested.

Warranty is according to our standard conditions: 15 months from the date BAIFA sold to the first buyer or one year after installation or 1000 running hours (accumulated), whichever comes first.

Service and parts are available from Baifa Power or distributors in your location.

MODEL: HC-2250GF2-G43**440V | 1800rpm | 60Hz****ENGINE SPECIFICATION**

Manufacturer / Model	MTU 16V4000G43S
----------------------	-----------------

Air intake system	Turbocharged, water/air intercooling
-------------------	--------------------------------------

Fuel system	Electronic Fuel Injection System
-------------	----------------------------------

Cylinder arrangement	16 in V
----------------------	---------

Displacement	76.3L
--------------	-------

Bore and stroke	170×210 mm
-----------------	------------

Compression ratio	16.4
-------------------	------

Rated speed	1800rpm
-------------	---------

Max. Standby power at rated speed	2222kW
-----------------------------------	--------

Governor type	ADEC
---------------	------

Exhaust System

Exhaust gas flow	456 m ³ /min
------------------	-------------------------

Exhaust temperature	465°C
---------------------	-------

Max back pressure	8.5kPa
-------------------	--------

Air Intake System

Max intake restriction	5kPa
------------------------	------

Combustion air flow	186 m ³ /min
---------------------	-------------------------

Air flow required for radiator	2340 m ³ /min
--------------------------------	--------------------------

Comprehensive Solutions For

POWER GENERATION

MODEL: HC-2250GF2-G43

440V | 1800rpm | 60Hz

Fuel System

Fuel consumption @ 100% (Prime Power) Load	200g/kWh	464L/h
Fuel consumption @ 75% (Prime Power) Load	203g/kWh	356L/h
Fuel consumption @ 50% (Prime Power) Load	215g/kWh	258L/h

Oil System

Total oil capacity	300L
Oil consumption	0.3% of Fuel Consumption
Oil sump capacity	210-240L

Cooling System

Coolant capacity	507L
Max water temperature	102°C

MODEL: HC-2250GF2-G43**440V | 1800rpm | 60Hz**

ALTERNATOR SPECIFICATION

Industrial alternators meet the requirements of the relevant parts of the BS5000, VDE 0530, NEMA MG1-22, IEC34, CSA 22.2-100 and AS1359.

Alternator Data

Number of Phase	3
Connecting Type	3 Phase and 4 Wires, Y type connecting
Number of Bearing	1
Power Factor	0.8
Protection Class	IP23
Altitude	≤1000m
Exciter Type	Brushless exciting
Insulation Class/Temperature Rise	H/H
Telephone Influence Factor (TIF)	< 50
THF	< 2%
Alternator Capacity	2500kVA
Alternator Efficiency	95.9%

MODEL: HC-2250GF2-G43**440V | 1800rpm | 60Hz****GENERATING SET DATA**

Related range of voltage setting	$\geq \pm 5\%$
Steady-state voltage deviation	$\leq \pm 1\%$
Transient voltage deviation (100 % sudden power decrease)	$\leq +20\%$
Transient voltage deviation (sudden power increase)	$\leq -15\%$
Voltage recovery time (100 % sudden power decrease)	$\leq 4S$
Voltage recovery time (sudden power increase)	$\leq 4S$
Related range of frequency setting	0-5% adjustable
Steady-state frequency band	$\leq 0.5\%$
Transient frequency deviation (100 % sudden power decrease)	$\leq +10\%$
Transient frequency deviation (sudden power increase)	$\leq -7\%$
Frequency recovery time (100 % sudden power decrease)	$\leq 3S$
Frequency recovery time (sudden power increase)	$\leq 3S$

STANDARD FEATURES

Standard auto control system	Exhaust system (including until muffler)	Documents
Oil drain valve	Starting batteries (maintenance-free & watering-free) with connective wires	Fuel-Water separator
Special coolant		

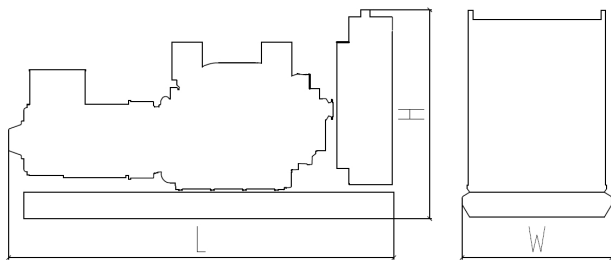
MODEL: HC-2250GF2-G43

440V | 1800rpm | 60Hz

OPTIONS

Daily fuel tank	Rainproof type	Remote control panel
Alternator heater	Soundproof type	Paralleling system
Spare parts	Trailer type	Switch box
Automatic transfer switch		

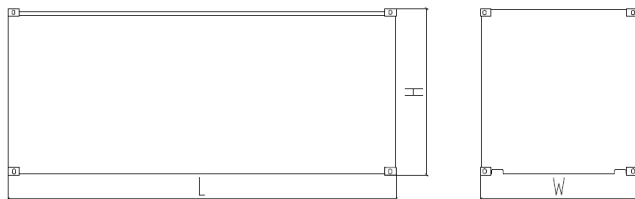
DIMENSIONS & WEIGHT



Standard Configuration (open type)

Overall Dimensions: 6900×2350×2600 mm

Weight: 15800kg



Soundproof Type (standard 40'ft HQ container)

Overall Dimensions: 12192×2438×2896 mm

Weight: 25800kg

Specifications are subject to change without notice.