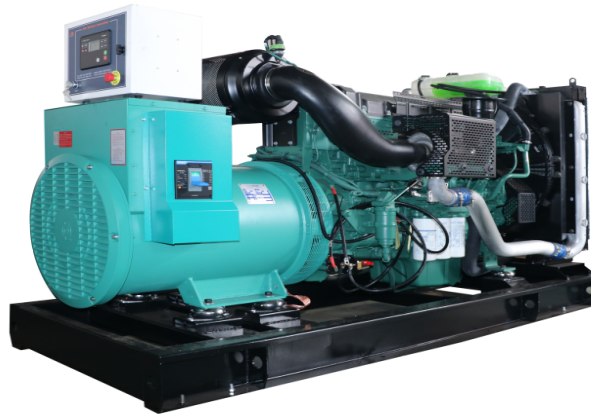


MODEL: HC-220GF2

440V | 1800rpm | 60Hz



ESP Standby Power	248kVA	PRP Prime Power	223kVA
ENGINE	Volvo	ALTERNATOR	STAMFORD
	TAD733GE		UCI274H1

GENERAL FEATURES

Engine: Volvo TAD733GE

Alternator: single bearing, IP23, insulation class H

55°C radiator, fans are driven by belt, with safety guard

Dry type air filter, fuel filter & oil filter

Vibration damper

Standard control panel

24V charging alternator

Exhaust bellows, elbows, flange & muffler

Lead-acid batteries, rack and cables

User manual

MODEL: HC-220GF2**440V | 1800rpm | 60Hz****GENERATOR RATINGS**

Voltage	Hz	Phase	PF (COSΦ)	Standby Amps	Standby Ratings (kW / kVA)	Prime Ratings (kW / kVA)
480/277	60	3	0.8	298	198kW/248kVA	178kW/223kVA
460/266	60	3	0.8	311	198kW/248kVA	178kW/223kVA
440/254	60	3	0.8	325	198kW/248kVA	178kW/223kVA
416/240	60	3	0.8	344	198kW/248kVA	178kW/223kVA

Prime Power (PRP): Prime power is available for an unlimited number of annual hours in variable load application, in accordance with GB/T2820 (eqv ISO 8528) ; A 10% overload capability is available for a period of 1 hour within a 12-hour period of operation.

Standby Power Rating (ESP): The standby power rating is applicable for supplying emergency power for the duration of a utility power interruption. No overload, utility parallel or negotiated outage operation capability is available at this rating.

SALES PROMISES

Baifa Power provides a full line of brand new and high quality products. Each and every unit is strictly factory tested.

Warranty is according to our standard conditions: 15 months from the date BAIFA sold to the first buyer or one year after installation or 1000 running hours (accumulated), whichever comes first.

Service and parts are available from Baifa Power or distributors in your location.

MODEL: HC-220GF2**440V | 1800rpm | 60Hz****ENGINE SPECIFICATION**

Manufacturer / Model	Volvo TAD733GE
Air intake system	Turbocharged, Air/Air inter cooling
Fuel system	Directly Injection Fuel System, Bosch Pump
Cylinder arrangement	6 in line
Displacement	7.15L
Bore and stroke	108×130 mm
Compression ratio	18
Rated speed	1800rpm
Max. Standby power at rated speed	213kW
Governor type	EDC4

Exhaust System

Exhaust gas flow	44.4 m ³ /min
Exhaust temperature	530°C
Max back pressure	7kPa

Air Intake System

Max intake restriction	3.5kPa
Combustion air flow	15.8 m ³ /min
Air flow required for radiator	222 m ³ /min

MODEL: HC-220GF2

440V | 1800rpm | 60Hz

Fuel System

Fuel consumption @ 100% (Prime Power) Load	222g/kWh	53.1L/h
Fuel consumption @ 75% (Prime Power) Load	220g/kWh	40.1L/h
Fuel consumption @ 50% (Prime Power) Load	222g/kWh	28.0L/h

Oil System

Total oil capacity	34L
Oil consumption	0.09L/h
Oil sump capacity	24-31L

Cooling System

Coolant capacity	32L
Max water temperature	105°C

MODEL: HC-220GF2

440V | 1800rpm | 60Hz

ALTERNATOR SPECIFICATION

Industrial alternators meet the requirements of the relevant parts of the BS5000, VDE 0530, NEMA MG1-22, IEC34, CSA 22.2-100 and AS1359.

Alternator Data	
Number of Phase	3
Connecting Type	3 Phase and 4 Wires, Y type connecting
Number of Bearing	1
Power Factor	0.8
Protection Class	IP23
Altitude	≤1000m
Exciter Type	Brushless exciting
Insulation Class/Temperature Rise	H/H
Telephone Influence Factor (TIF)	<50
THF	<2%
Alternator Capacity	245kVA
Alternator Efficiency	93.2%

MODEL: HC-220GF2**440V | 1800rpm | 60Hz****GENERATING SET DATA**

Related range of voltage setting	$\geq \pm 5\%$
Steady-state voltage deviation	$\leq \pm 1\%$
Transient voltage deviation (100 % sudden power decrease)	$\leq +25\%$
Transient voltage deviation (sudden power increase)	$\leq -20\%$
Voltage recovery time (100 % sudden power decrease)	$\leq 6S$
Voltage recovery time (sudden power increase)	$\leq 6S$
Related range of frequency setting	0-5% adjustable
Steady-state frequency band	$\leq 1.5\%$
Transient frequency deviation (100 % sudden power decrease)	$\leq +12\%$
Transient frequency deviation (sudden power increase)	$\leq -10\%$
Frequency recovery time (100 % sudden power decrease)	$\leq 5S$
Frequency recovery time (sudden power increase)	$\leq 5S$

STANDARD FEATURES

Standard auto control system	Exhaust system (including until muffler)	Documents
Oil drain valve	Starting batteries (maintenance-free & watering-free) with connective wires	MCCB

Base fuel tank

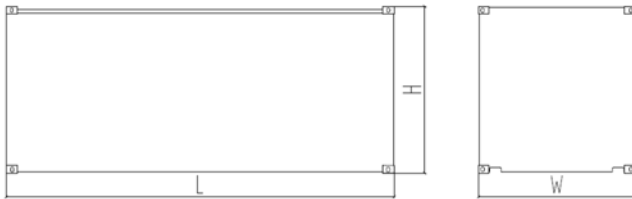
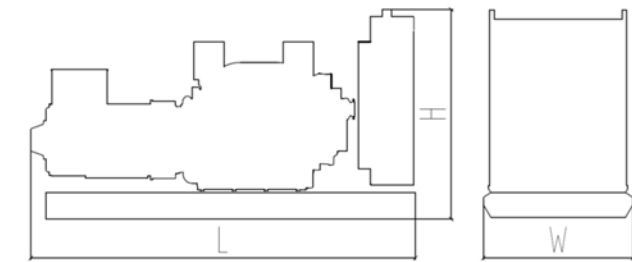
MODEL: HC-220GF2

440V | 1800rpm | 60Hz

OPTIONS

Daily fuel tank	Rainproof type	Remote control panel
Alternator heater	Soundproof type	Paralleling system
Spare parts	Trailer type	Switch box
Automatic transfer switch		

DIMENSIONS & WEIGHT



Standard Configuration (open type)

Overall Dimensions: 2660×1050×1610 mm

Weight: 1820 kg

Soundproof Type

Overall Dimensions: 3590×1310×2050 mm

Weight: 2700 kg

Specifications are subject to change without notice.