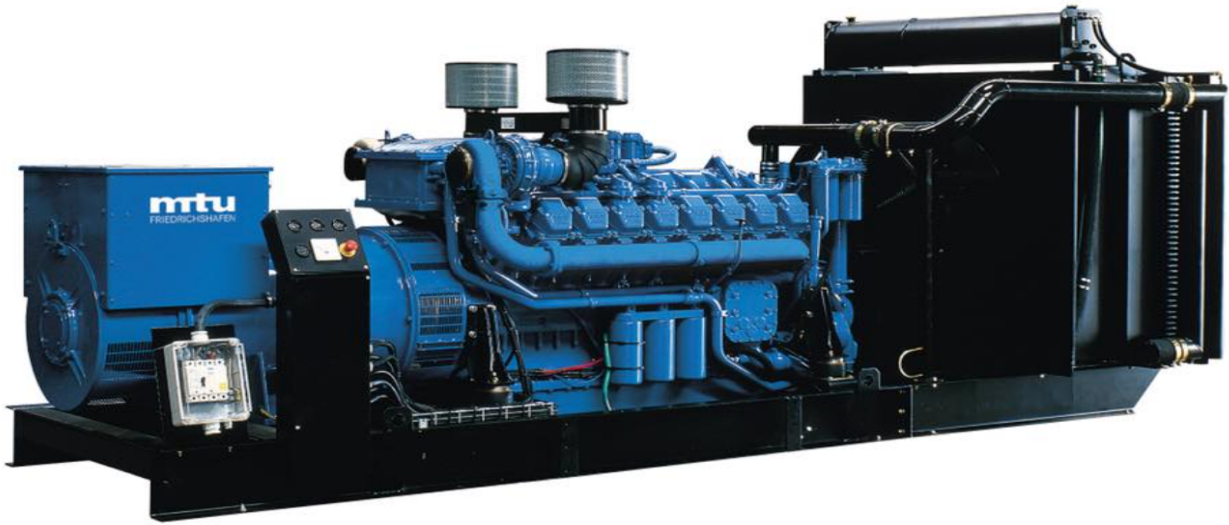


MODEL: H C -2000GF

400V | 1500rpm | 50Hz



ESP Standby Power	2750 kVA	PRP Prime Power	2500 kVA
ENGINE	MTU	ALTERNATOR	STAMFORD
	20V4000G23		S7L1D-J4

GENERAL FEATURES

Engine: MTU 20V4000G23	Alternator: single bearing, IP23, insulation class H
40°C radiator, fans are driven by motor, with safety guard	Dry type air filter, fuel filter & oil filter
Vibration damper	Standard control panel
24V charging alternator	Exhaust bellows, elbows, flange & muffler
Lead-acid batteries, rack and cables	User manual
Permanent Magnet Generator (PMG)	

MODEL: H C -2000GF

400V | 1500rpm | 50Hz

GENERATOR RATINGS

Voltage	Hz	Phase	PF (COSΦ)	Standby Amps	Standby Ratings (kW / kVA)	Prime Ratings (kW / kVA)
440/254	50	3	0.8	3609	2200/2750	2000/2500
415/240	50	3	0.8	3826	2200/2750	2000/2500
400/230	50	3	0.8	3969	2200/2750	2000/2500
380/220	50	3	0.8	4178	2200/2750	2000/2500

Prime Power (PRP): Prime power is available for an unlimited number of annual hours in variable load application, in accordance with GB/T2820 (eqv ISO8528) ; A 10% overload capability is available for a period of 1 hour within a 12-hour period of operation.

Standby Power Rating (ESP): The standby power rating is applicable for supplying emergency power for the duration of a utility power interruption. No overload, utility parallel or negotiated outage operation capability is available at this rating.

SALES PROMISES

Baifa Power provides a full line of brand new and high quality products. Each and every unit is strictly factory tested.

Warranty is according to our standard conditions: 15 months from the date BAIFA sold to the first buyer or one year after installation or 1000 running hours (accumulated), whichever comes first.

Service and parts are available from Baifa Power or distributors in your location.

MODEL: H C -2000GF**400V | 1500rpm | 50Hz****ENGINE SPECIFICATION**

Manufacturer / Model	MTU/20V4000G23
----------------------	----------------

Air intake system	Turbocharged, water/air inter cooling
-------------------	---------------------------------------

Fuel system	Electronic Fuel Injection System
-------------	----------------------------------

Cylinder arrangement	20 in V
----------------------	---------

Displacement	95.4L
--------------	-------

Bore and stroke	170×210 mm
-----------------	------------

Compression ratio	16.4:1
-------------------	--------

Rated speed	1500 rpm
-------------	----------

Max. Standby power at rated speed	2420kW (without fan)
-----------------------------------	----------------------

Governor type	ADEC
---------------	------

Exhaust System

Exhaust gas flow	426 m ³ / min
------------------	--------------------------

Exhaust temperature	600 °C
---------------------	--------

Max back pressure	8.5 kPa
-------------------	---------

Air Intake System

Max intake restriction	5 kPa
------------------------	-------

Combustion air flow	156 m ³ /min
---------------------	-------------------------

Air flow required for radiator	2580 m ³ /min
--------------------------------	--------------------------

Comprehensive Solutions For

POWER GENERATION

MODEL: H C -2000GF

400V | 1500rpm | 50Hz

Fuel System

Fuel consumption @ 100% (Prime Power) Load	192 g/kWh	482 L/h
Fuel consumption @ 75% (Prime Power) Load	195 g/kWh	369 L/h
Fuel consumption @ 50% (Prime Power) Load	211 g/kWh	271 L/h

Oil System

Total oil capacity	390 L
Oil consumption	0.3% Fuel Consumption
Oil sump capacity	245~340L

Cooling System

Coolant capacity	550 L
Max water temperature	104°C

MODEL: H C -2000GF**400V | 1500rpm | 50Hz**

ALTERNATOR SPECIFICATION

Industrial alternators meet the requirements of the relevant parts of the BS5000, VDE 0530, NEMA MG1-22, IEC34, CSA 22.2-100 and AS1359.

Alternator Data

Number of Phase	3
Connecting Type	3 Phase and 4 Wires, "Y" type connecting
Number of Bearing	1
Power Factor	0.8
Protection Class	IP23
Altitude	≤1000m
Exciter Type	Brushless, PMG exciting
Insulation Class/Temperature Rise	H/H
Telephone Influence Factor (TIF)	< 50
THF	< 2%
Alternator Capacity	2500 kVA
Alternator Efficiency	96.3%

MODEL: H C -2000GF**400V | 1500rpm | 50Hz****GENERATING SET DATA**

Related range of voltage setting	$\geq \pm 5\%$
Steady-state voltage deviation	$\leq \pm 1\%$
Transient voltage deviation (100 % sudden power decrease)	$\leq +20\%$
Transient voltage deviation (sudden power increase)	$\leq -15\%$
Voltage recovery time (100 % sudden power decrease)	$\leq 4S$
Voltage recovery time (sudden power increase)	$\leq 4S$
Related range of frequency setting	0-5% adjustable
Steady-state frequency band	$\leq 0.5\%$
Transient frequency deviation (100 % sudden power decrease)	$\leq +10\%$
Transient frequency deviation (sudden power increase)	$\leq -7\%$
Frequency recovery time (100 % sudden power decrease)	$\leq 3S$
Frequency recovery time (sudden power increase)	$\leq 3S$

STANDARD FEATURES

Comap standard auto control system	Exhaust system(including until muffler)	Documents
Oil drain valve	Starting batteries (maintenance-free & watering-free) with connective wires	Fuel-Water separator
Permanent magnet generator (PMG)	Special coolant	

MODEL: H C -2000GF

400V | 1500rpm | 50Hz

OPTIONS

Daily fuel tank	Rainproof type	Remote control panel
Alternator heater	Soundproof type	Paralleling system
Spare parts	Trailer type	Switch box
Automatic transfer switch		

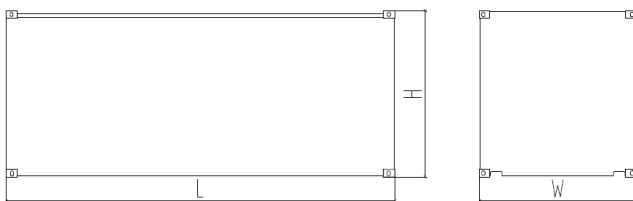
DIMENSIONS & WEIGHT



Standard Configuration (open type)

Overall Dimensions: 7700×2400×2750 mm

Weight: 19200 kg



Soundproof Type (standard 40'ft HQ container)

Overall Dimensions: 12192×2438×2896mm

Weight: 29200kg

Specifications are subject to change without notice.