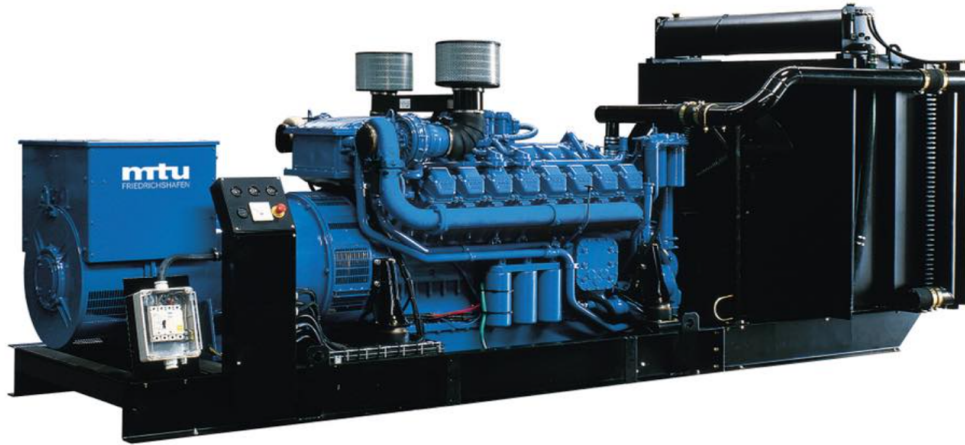


MODEL: HC-1880GF

400V | 1500rpm | 50Hz



ESP Standby Power	2500 kVA	PRP Prime Power	2275 kVA
ENGINE	MTU	ALTERNATOR	STAMFORD
	16V4000G63F		S7L1D-J4

GENERAL FEATURES

Engine: MTU 16V4000G63F	Alternator: single bearing, IP23, insulation class H
40°C radiator, fans are driven by motor, with safety guard	Dry type air filter, fuel filter & oil filter
Vibration damper	Standard control panel
24V charging alternator	Exhaust bellows, elbows, flange & muffler
Lead-acid batteries, rack and cables	User manual
Permanent Magnet Generator (PMG)	

MODEL: HC-1880GF**400V | 1500rpm | 50Hz****GENERATOR RATINGS**

Voltage	Hz	Phase	PF (COS Φ)	Standby Amps	Standby Ratings (kW / kVA)	Prime Ratings (kW / kVA)
440/254	50	3	0.8	3280	2000/2500	1820/2275
415/240	50	3	0.8	3478	2000/2500	1820/2275
400/230	50	3	0.8	3609	2000/2500	1820/2275
380/220	50	3	0.8	3798	2000/2500	1820/2275

Prime Power (PRP): Prime power is available for an unlimited number of annual hours in variable load application, in accordance with GB/T2820 (eqv ISO8528) ; A 10% overload capability is available for a period of 1 hour within a 12-hour period of operation.

Standby Power Rating (ESP): The standby power rating is applicable for supplying emergency power for the duration of a utility power interruption. No overload, utility parallel or negotiated outage operation capability is available at this rating.

SALES PROMISES

Baifa Power provides a full line of brand new and high quality products. Each and every unit is strictly factory tested.

Warranty is according to our standard conditions: 15 months from the date BAIFA sold to the first buyer or one year after installation or 1000 running hours (accumulated), whichever comes first.

Service and parts are available from Baifa Power or distributors in your location.

MODEL: HC-1880GF

400V | 1500rpm | 50Hz

ENGINE SPECIFICATION

Manufacturer / Model	MTU/16V4000G63F
Air intake system	Turbocharged, water/air inter cooling
Fuel system	Electronic Fuel Injection System
Cylinder arrangement	16 in V
Displacement	76.3L
Bore and stroke	170×210 mm
Compression ratio	16.4:1
Rated speed	1500 rpm
Max. Standby power at rated speed	2162kW (without fan)
Governor type	ADEC

Exhaust System

Exhaust gas flow	396 m ³ / min
Exhaust temperature	490 °C
Max back pressure	8.5 kPa

Air Intake System

Max intake restriction	5 kPa
Combustion air flow	156 m ³ /min
Air flow required for radiator	2160 m ³ /min

MODEL: HC-1880GF**400V | 1500rpm | 50Hz****Fuel System**

Fuel consumption @ 100% (Prime Power) Load	189 g/kWh	432 L/h
Fuel consumption @ 75% (Prime Power) Load	191 g/kWh	330 L/h
Fuel consumption @ 50% (Prime Power) Load	201 g/kWh	236 L/h

Oil System

Total oil capacity	300 L
Oil consumption	0.3% Fuel Consumption
Oil sump capacity	210~240L

Cooling System

Coolant capacity	500 L
Max water temperature	104°C

MODEL: HC-1880GF**400V | 1500rpm | 50Hz**

ALTERNATOR SPECIFICATION

Industrial alternators meet the requirements of the relevant parts of the BS5000, VDE 0530, NEMA MG1-22, IEC34, CSA 22.2-100 and AS1359.

Alternator Data

Number of Phase	3
Connecting Type	3 Phase and 4 Wires, "Y" type connecting
Number of Bearing	1
Power Factor	0.8
Protection Class	IP23
Altitude	≤1000m
Exciter Type	Brushless, PMG exciting
Insulation Class/Temperature Rise	H/H
Telephone Influence Factor (TIF)	<50
THF	<2%
Alternator Capacity	2500 kVA
Alternator Efficiency	96.3%

MODEL: HC-1880GF**400V | 1500rpm | 50Hz****GENERATING SET DATA**

Related range of voltage setting	$\geq \pm 5\%$
Steady-state voltage deviation	$\leq \pm 1\%$
Transient voltage deviation (100 % sudden power decrease)	$\leq +20\%$
Transient voltage deviation (sudden power increase)	$\leq -15\%$
Voltage recovery time (100 % sudden power decrease)	$\leq 4S$
Voltage recovery time (sudden power increase)	$\leq 4S$
Related range of frequency setting	0-5% adjustable
Steady-state frequency band	$\leq 0.5\%$
Transient frequency deviation (100 % sudden power decrease)	$\leq +10\%$
Transient frequency deviation (sudden power increase)	$\leq -7\%$
Frequency recovery time (100 % sudden power decrease)	$\leq 3S$
Frequency recovery time (sudden power increase)	$\leq 3S$

STANDARD FEATURES

Standard auto control system	Exhaust system (including until muffler)	Documents
Oil drain valve	Starting batteries (maintenance-free & watering-free) with connective wires	Fuel-Water separator

Special coolant

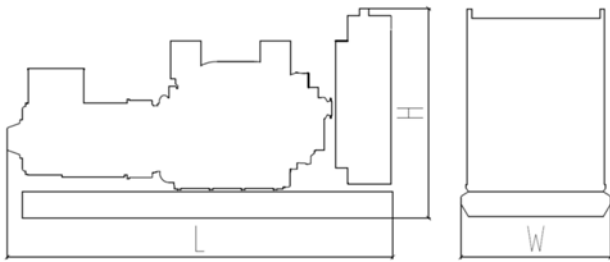
MODEL: HC-1880GF

400V | 1500rpm | 50Hz

OPTIONS

Daily fuel tank	Rainproof type	Remote control panel
Alternator heater	Soundproof type	Paralleling system
Spare parts	Trailer type	Switch box
Automatic transfer switch		

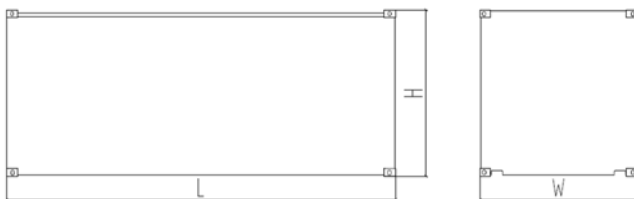
DIMENSIONS & WEIGHT



Standard Configuration (open type)

Overall Dimensions: 6900×2350×2600 mm

Weight: 16600 kg



Soundproof Type (standard 40'ft HQ container)

Overall Dimensions: 12192×2438×2896mm

Weight: 26600kg

Specifications are subject to change without notice.