

# EVEREST90



# Introduction »

EVEREST90 is engineered for inspection of DN90–DN300 pipelines, ideal for sewer and stormwater systems with narrow access.

Its lightweight design, weighing under 6kg, makes it easy to transport and deploy. Built from corrosion-resistant stainless steel and aerospace-grade aluminum, it delivers IP68 industrial protection, including 10m waterproofing and explosion resistance.

The quick-release wheel system allows fast, tool-free wheel changes to adapt to different pipe sizes on-site. With steering function and smooth navigation through slopes, bends, EVEREST90 ensures stable performance. Cruise control and a built-in positioning locator support accurate underground navigation.

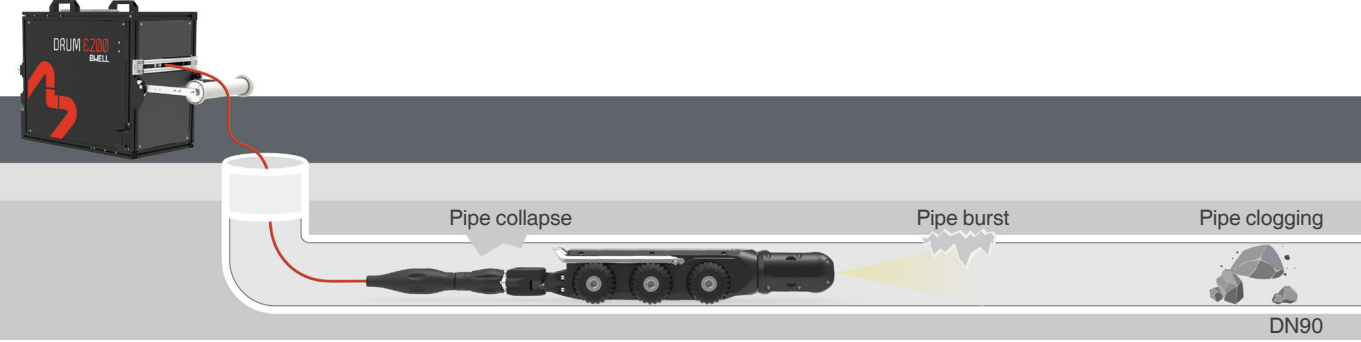
Compatible with EVEREST150 and EVEREST200 cable drums (120m and 200m), the system offers cross-product flexibility. Existing users can add the crawler without purchasing a new cable drum, which is a more cost-effective solution. The battery-powered reel supports up to

10 hours of continuous operation.

Control is available via wireless tablet, or with IVC and PSC, enabling flexible or centralized management. Operators can adjust crawler movement, cable rewinding, and camera settings in real-time. Built-in image measurement tools support water level, crack width, and deformation analysis. With VISONIC software, the system offers defect coding and structured reporting, compliant with NASSCO PACP, WRC, and EN 13508-2. Reports can be exported as PDF or data files, making data transfer and project documentation seamless.

EVEREST90 completes the EVEREST product line by covering small-diameter pipeline needs. It is designed to handle daily inspection tasks across multiple scenarios—a compact yet capable choice at a cost-effective price point.

# Applications »

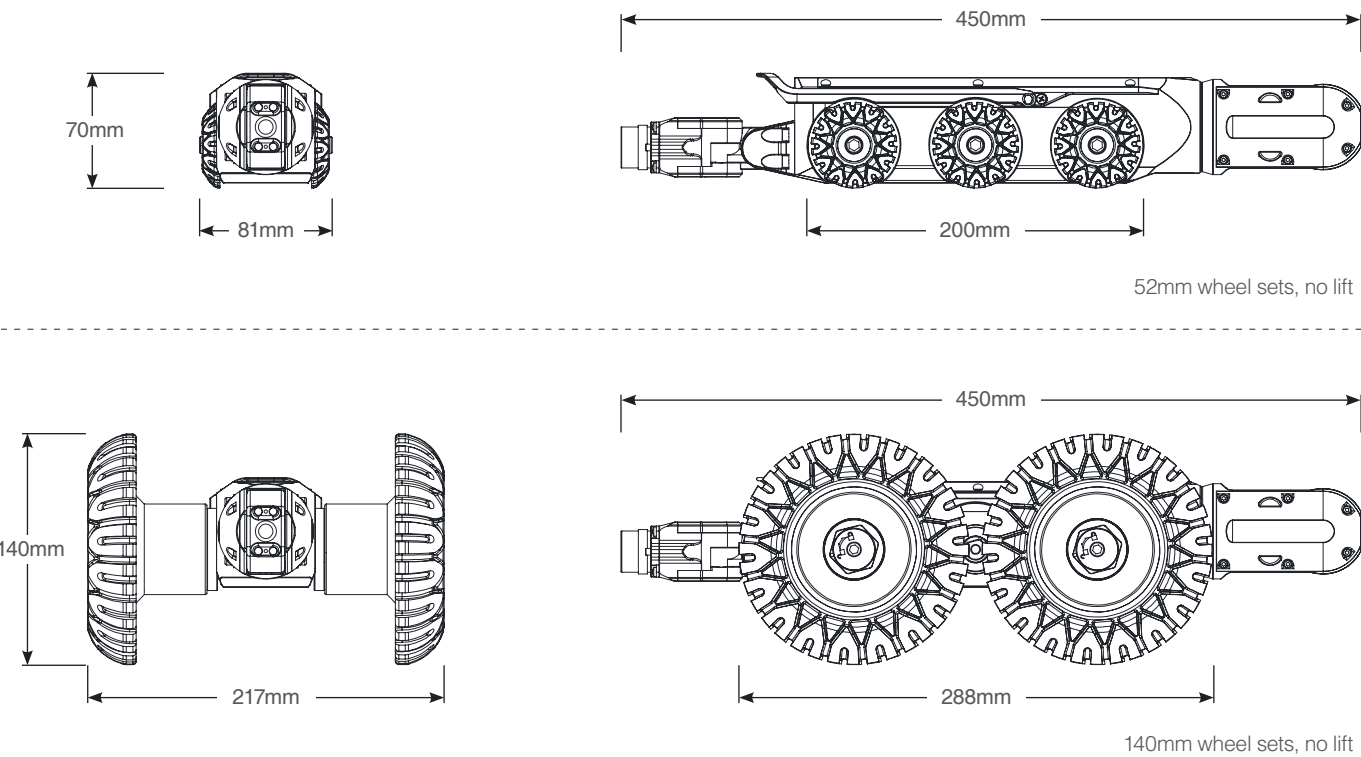


# Features »



# Dimensions »

Wheel sets: 52mm / 88mm / 125Cmm / 140mm



# Specifications >>



Crawler

Deployment range	DN90-DN300	
Dimensions (LxWxH)	Crawler (without wheel and camera)	352.5x64.6x66.6mm
	CAM A55+52mm wheel sets (no lift)	450x80.6x69.6mm (for DN100-DN150)
	CAM A55+140mm wheel sets (no lift)	450x216.6x140mm (for DN250-DN300)
Weight	approx.5.52kg	
Permissible ambient temperature	-20°C~60°C	
Protection class	IP68	
Steering function	Dual motor differential design, 360° steering	
Drive	6-wheel driven	
Attitude display	In-built inclination sensor and overturn protection; control interface displays real-time left and right roll angles, front and rear pitch angles, and camera rotation angles	
Direction function	Forward, backward, steering, automatic cruise	
Inclination	Max.35° (concrete floor)	
Power supply	Cable drum	
Rear camera	Camera resolution	Full HD; 1920×1080P; 2.0 Megapixels
	Defog function	×
	Rear light	2 white power LEDs



Camera (CAM E55)

Front camera	Camera resolution	Full HD; 1920×1080P; 2.0 Megapixels
	Digital zoom	4x
	Min. focus distance	3.3cm
	Light sensitivity (lux)	0.1 Lux
	Pan & Tilt	360° endless rotation, ±135° tilt one-click reset
	Dual point parallel laser	✓
	Low-beam light	4 white power LEDs
	High-beam light	×
	Defog function	×



Cable Drum (DRUM E200)

Dimensions	720×695×435mm
Weight	approx.64kg (excl. battery)
Motor-driven	✓
Cable length	200m motorized; Optional: 120m
Cable tension	250kg
Meter counter	✓
Power supply	Battery, 10h; power cord (optional)
Protection class	IP68
Cable level wind assembly	✓
Emergency stop switch	✓



Control Unit

Dimensions	11 inch
Weight	approx.480g (excl. pad case)
Operating system	Android
Display resolution	1920×1200P
Display information	date, time, tractor position angle, inclination, distance, inspection video, text input, overturn alert and tractor control
Data storage	128G
Connections	wireless
Data transmission	Wi-Fi

**Bwell Technology Co.,Ltd**



+852 9602 1801



info@bwell-int.com



www.bwell-int.com



10F,Block A,Building No.9,Baoneng Sci-Tech Park,Qingxiang Road Longhua District,Shenzhen,China 518100