

EVEREST200



Introduction »

EVEREST200 is a high-performance inspection crawler system engineered for pipelines with diameters ranging from DN200 to DN1000. Designed to meet the demanding requirements of sewer mains, stormwater drains, and water conveyance culverts, it combines mechanical strength, intelligent control, and visual precision to handle a wide range of underground inspection tasks.

At its core, the system features a 6-wheel drive platform, powered by dual independent motors that provide robust traction and precise maneuverability. With a maximum climbing ability of 35°, EVEREST200 can easily overcome obstacles, navigate pipe joints, and maintain stability in steep or uneven terrain. To suit diverse pipe environments, the crawler offers five types of interchangeable wheels, allowing quick adaptation to conditions such as slippery pipe walls, water presence, heavy silt, or sediment buildup.

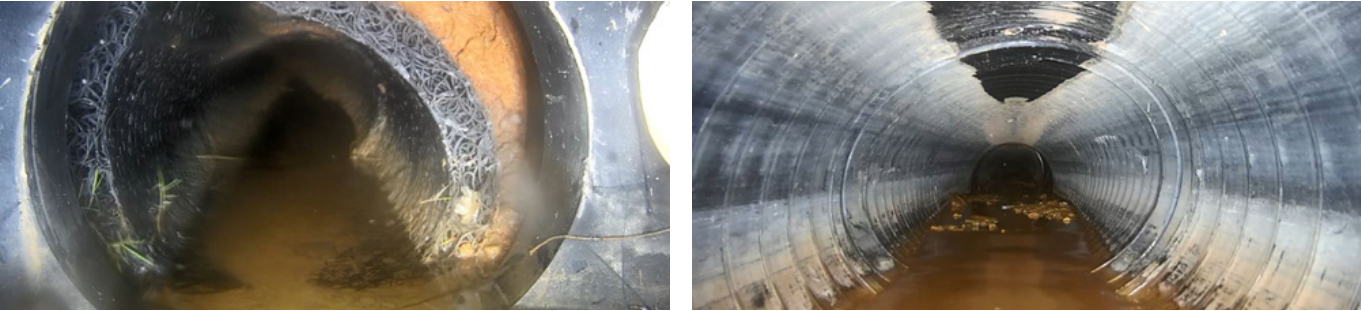
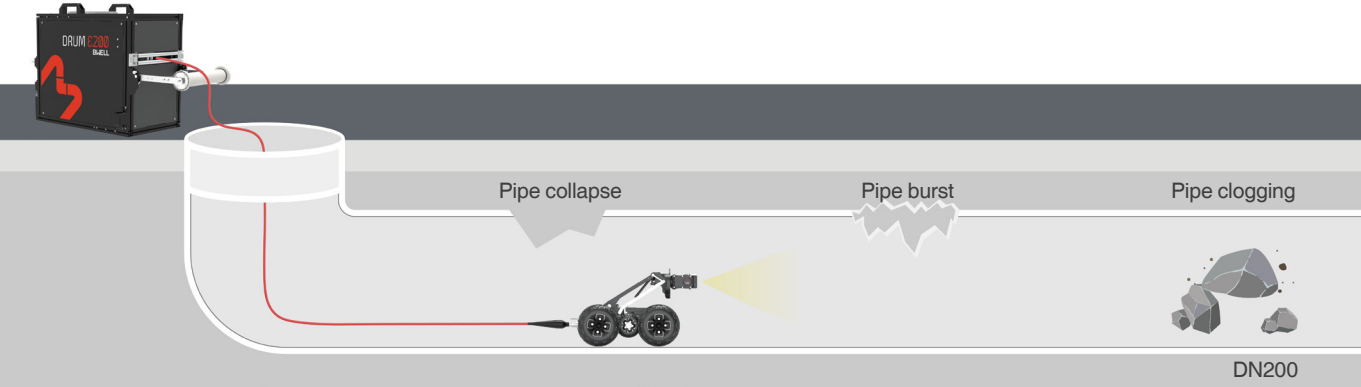
The standard CAM E120 camera delivers Full HD (1920×1080) resolution and supports 360° endless rotation and ±150° tilt, ensuring full visual coverage. For tasks requiring enhanced image clarity, an upgrade to a 4.0-megapixel version is available.

EVEREST200 supports both 120m and 200m motorized cable drums, allowing flexible configuration based on project length and site constraints. Control is handled through a wireless tablet, ensuring operational flexibility and mobility on-site. The system is also compatible with IVC and PSC control consoles, supporting centralized or advanced multi-device coordination.

Powered by VISONIC software, the system enables structured defect coding, automated video captioning, and professional report generation. It supports both real-time analysis and post-processing, facilitating end-to-end project data management. The system complies with international inspection standards such as NASSCO PACP, WRC, and EN 13508-2, ensuring data consistency and global interoperability.

Reliable, flexible, and built for performance, EVEREST200 is an essential tool for professional pipeline inspection teams operating in complex underground conditions.

Applications »



Deformation captured in DN300 pipeline.

Features »

Compatible Camera

Standard for 2.0 Megapixels, Optional for CAM E120 with 4.0 Megapixels and CAM E55.

Optional Modules

Gas detection, 2D and 3D laser measurement, infrared temperature monitoring, reinforced lighting module etc.

Strong Mobility

Steering function and max inclination 35°.

PTZ

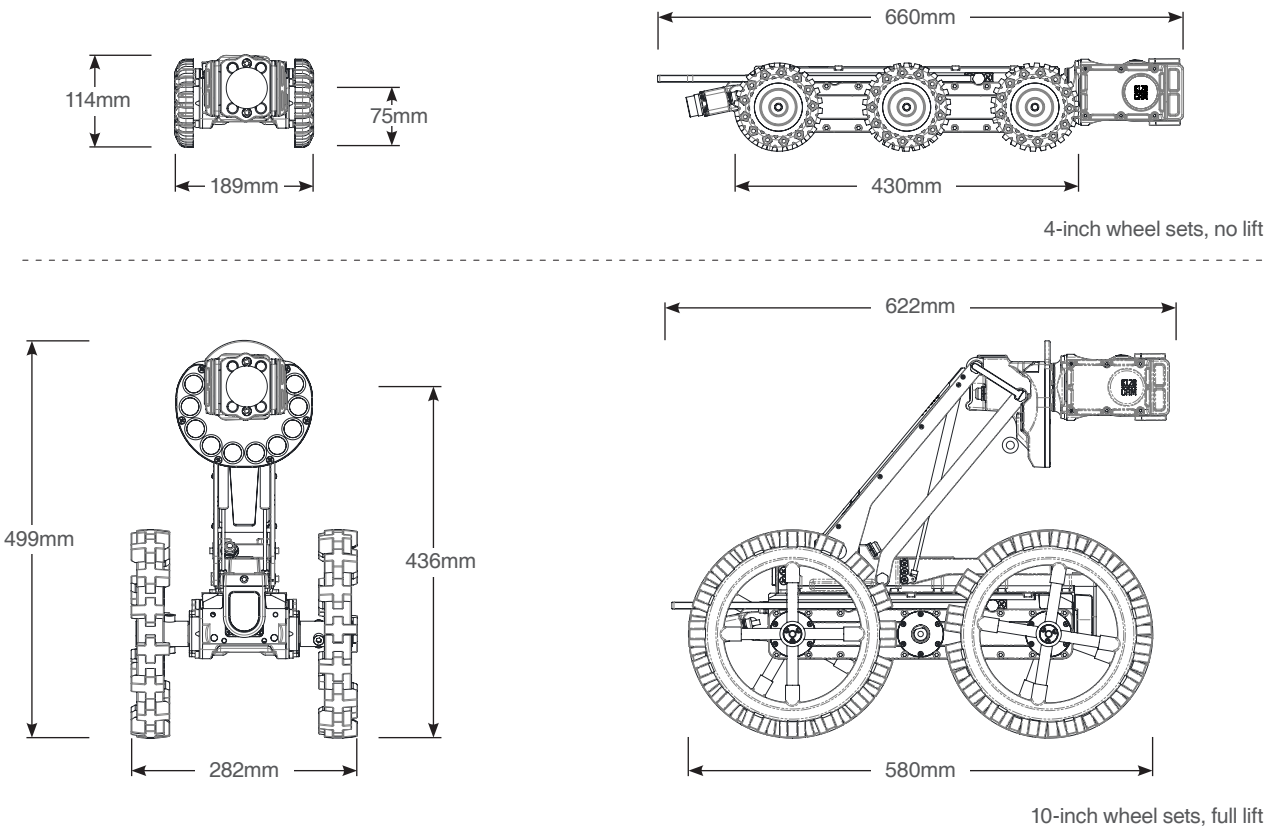
360° endless rotation, ±180° tilt, 10x optical zoom.

Extended Reach

Support 120m and 200m cable drum.

Dimensions »

Wheel sets: 4/5/6/9/10-inch



10-inch wheel sets, full lift

Specifications >>



Crawler

Deployment range	DN200-DN1000
Dimensions	808×189×114mm (4-inch wheel sets, no lift) 808×212×434mm (5-inch wheel sets, full lift) 808×315×444mm (6-inch wheel sets, full lift) 808×420×481mm (9-inch wheel sets, full lift) 808×340×499mm (10-inch wheel sets, full lift)
Weight	approx. 19.45kg (with 6 5-inch wheel sets)
Steering function	✓
Drive	6-wheel driven
Inclination	35°
Inclination sensor	✓
Temperature sensor	✓
Attitude sensor	✓
Overturn protection	✓
Lift	in-built
Protection class	IP68
Permissible ambient temperature	-20°C~60°C
Wheel sets	standard: 4 inch, 5 inch, 6 inch, 9 inch, 10 inch
Rear camera	Full HD, 1920×1080P, 2.0 Megapixels 2 white power LEDs



Camera (CAM E120)

Pan & Tilt	360° endless rotation, ±180° tilt, one-click reset
Front camera resolution	Full HD, 1920×1080P 2.0 Megapixels
Optical zoom	10x
Min focus distance	0.1m
Light sensitivity (lux)	0.05 Lux
Lighting	4 white power LEDs
Defog	✓
Optional	CAM E120-4.0 Megapixels, CAM E55



Cable Drum (DRUM E200)

Dimensions	720×695×435mm
Weight	approx. 64kg (excl. battery)
Motor-driven	✓
Cable length	200m motorized; Optional: 120m
Cable tension	250kg
Meter counter	✓
Power supply	Battery, 10h; power cord (optional)
Protection class	IP68
Cable level wind assembly	✓
Emergency stop switch	✓



Control Unit

Dimensions	11 inch
Weight	approx. 480g (excl. pad case)
Operating system	Android
Display resolution	1920×1200P
Display information	date, time, tractor position angle, inclination, distance, inspection video, text input, overturn alert and tractor control
Data storage	128G
Connections	wireless
Data transmission	Wi-Fi

Bwell Technology Co.,Ltd



+852 9602 1801



info@bwell-int.com



www.bwell-int.com



10F,Block A,Building No.9,Baoneng Sci-Tech Park,Qingxiang Road Longhua District,Shenzhen,China 518100