

ALPS90



Introduction »

ALPS90 is a compact, high-performance CCTV inspection crawler tailored for small-diameter pipelines ranging from DN90 to DN300. It is an ideal solution for municipal and industrial underground inspection tasks such as sewer mains, water transmission pipes, and cable troughs.

Built with a reinforced stainless steel chassis and abrasion-resistant wheels, the ALPS90 ensures long-term durability and stable performance over extended distances. It is also equipped with a quick-lock wheel system, which allows tool-free wheel changes with multiple wheel sizes available to match varying pipe diameters.

The system features 360° in-place rotation and smooth navigation through slopes, bends, and uneven ground. It supports automated cruise control and is equipped with a positioning transmitter, allowing

precise location tracking. The system is equipped with 300m cable drum, with 600m as an option for long-distance operations.

Operators can quickly adjust crawler speed, cable rewind, and camera settings through our control system, which supports tablet control, IVC, and PSC to suit different jobsite needs. This system also supports image-based measurement capabilities, including water level, crack width, deformation rate.

The reporting system is compatible with VISONIC software, supporting real-time defect coding and structured output. It enables users to generate reports in compliance with multiple international standards such as NASSCO PACP, WRC and EN 13508-2, with results available in print-ready PDF or exportable formats.

Features »

Extended Reach

Support 300m and 600m cable drum for long-distance inspection.

Locator Frequency

512Hz for accurate positioning.

PTZ

360° endless rotation, ±135° tilt, 4x digital zoom.

Strong Mobility

6-wheel driven, dual-motor delivers superior power.

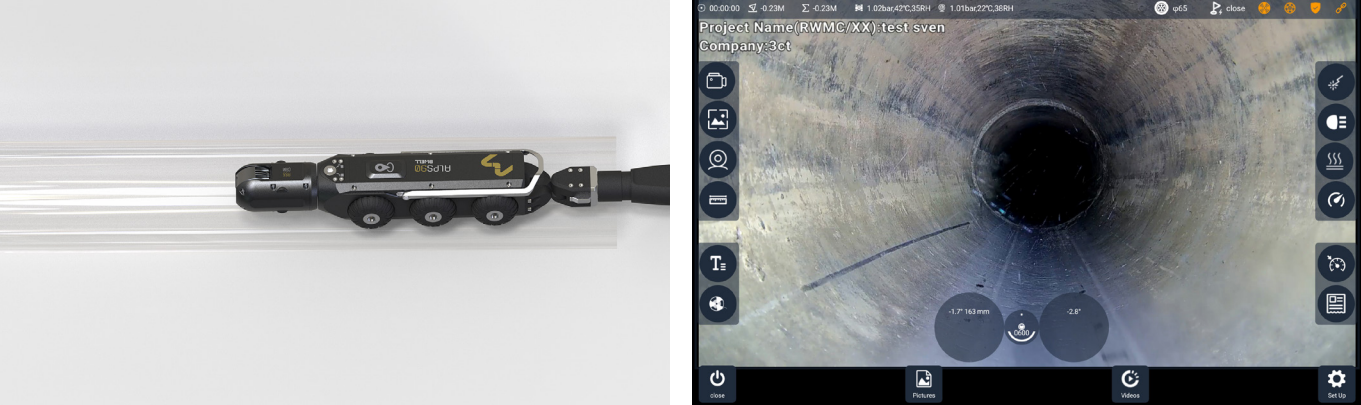
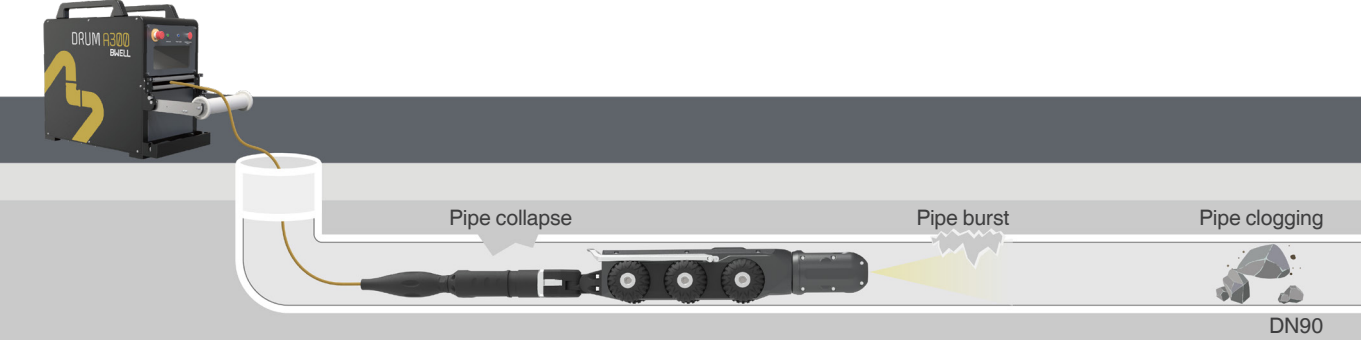
Integrated Design

All-in-one body for stable performance in confined and complex environments.

FHD Precision Imaging

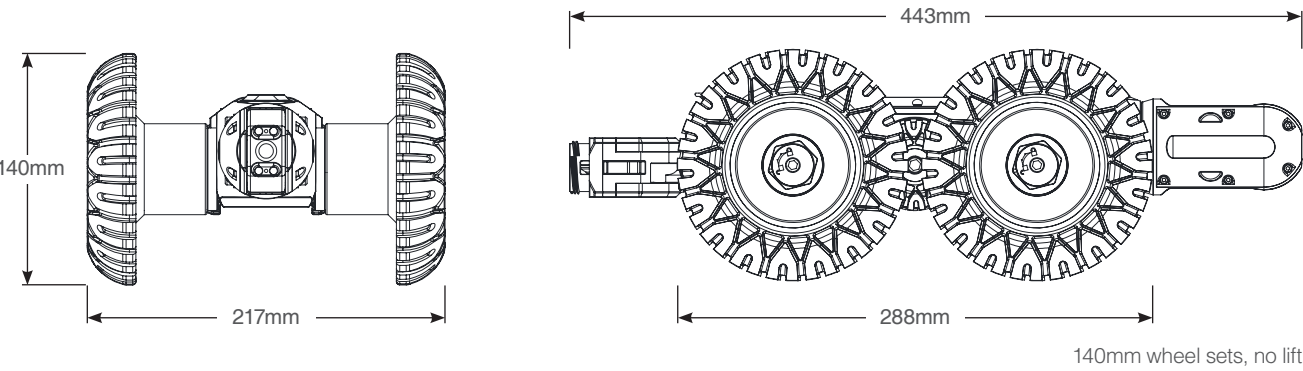
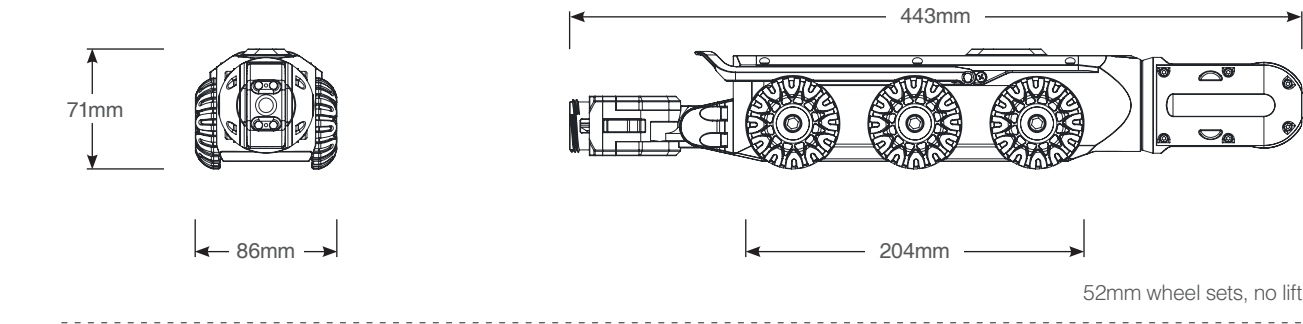
2.0 Megapixels with 3.3cm min focus distance, and laser measurement for detailed inspection.

Applications »



Dimensions »

Wheel sets: 52mm / 88mm / 125Cmm / 140mm



Specifications >>



Crawler

Deployment range	DN90-DN300	
Dimensions (LxWxH)	Crawler (without wheel and camera)	346x64.6x68mm
	CAM A55+52mm wheel sets (no lift)	444x80.6x71mm (for DN100-DN150)
	CAM A55+140mm wheel sets (no lift)	444x216.6x140mm (for DN250-DN300)
Weight	approx.5.52kg	
Permissible ambient temperature	-20°C~60°C	
Protection class	IP68	
Steering function	Dual motor differential design,360° steering	
Drive	6-wheel driven	
Attitude display	In-built inclination sensor and overturn protection; control interface displays real-time left and right roll angles, front and rear pitch angles, and camera rotation angles	
Direction function	Forward, backward, steering, automatic cruise	
Pipeline positioning function	In-built	
Inclination	Max.35° (concrete floor)	
Locator frequency	512Hz; 640Hz; 33kHz	
Power supply	Cable drum	
Rear camera	Camera resolution	Full HD; 1920×1080P; 2.0 Megapixels
	Defog function	×
	Rear light	2 white power LEDs



Camera (CAM A55)

Front camera	Camera resolution	Full HD; 1920×1080P; 2.0 Megapixels
	Digital zoom	4x
	Min. focus distance	3.3cm
	Light sensitivity (lux)	0.1 Lux
	Pan & Tilt	360° endless rotation, ±135° tilt; one-click reset
	Dual point parallel laser	✓
	Low-beam light	4 white power LEDs
	High-beam light	×
	Defog function	×



Cable Drum (DRUM A300)

Dimensions	705x365x600mm
Weight	70.5kg
Protection class	IP65
Cable length	300m motorized; Optional: 600m
Cable material	Outer layer TPU, inner Kevlar tension-resistant layer; Cable tension: 300kg; Waterproof, oil-resistant, wear-resistant, acid and alkali-resistant, corrosion-resistant
Cable protection	With manhole cover roller
Meter counter	✓, Accuracy: ±0.5m
Operating system	Power switch, emergency stop switch



Control Unit

Control unit	PSC
Dimensions(LxWxH)	360x210x86mm
Operating instructions	Two joystick controls, using a dual joystick operation method. Each joystick is equipped with a button function, and is also paired with 8 quick control buttons.
Operating system	Android
Video format / picture format	MPEG4/H.264/JPEG or PNG (selectable)
Internal memory	128G+1T
Optional	IVC, wireless tablet

Bwell Technology Co.,Ltd

+852 9602 1801

info@bwell-int.com

www.bwell-int.com

10F,Block A,Building No.9,Baoneng Sci-Tech Park,Qingxiang Road Longhua District,Shenzhen,China 518100