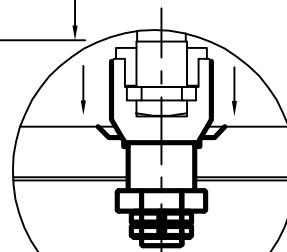
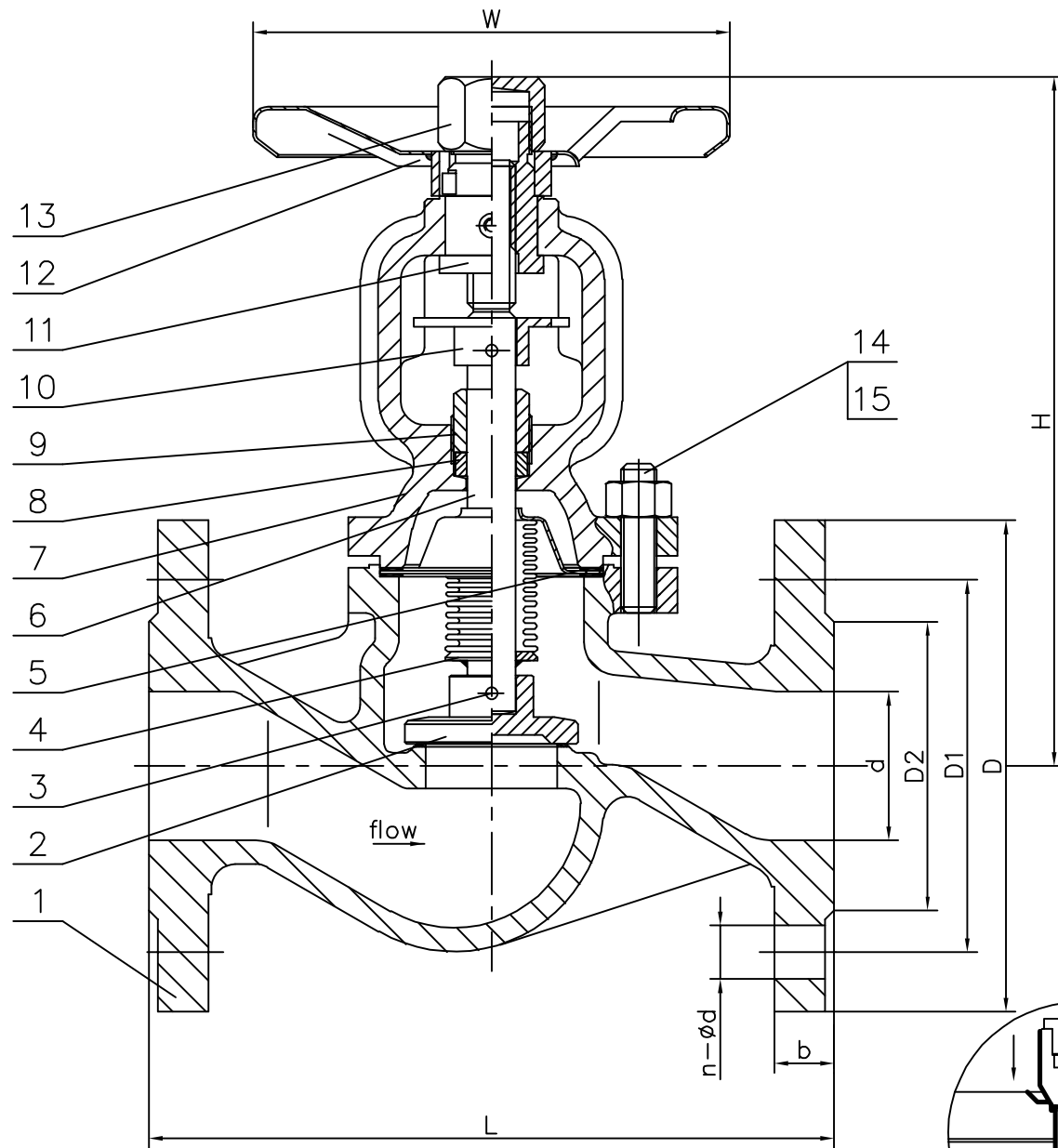




DIN BELLOWS SEALED GLOBE VALVES PN16/25/40



Double Disc(DN>250)

Nominal Diameter	Main Dimension (mm)								
	d	D	D1	D2	b	n-φd	L(F1)	H	W
15	15	95	65	45	16	4-φ14	130	192	120
20	20	105	75	58	18	4-φ14	150	192	120
25	25	115	85	68	18	4-φ14	160	202	140
32	32	140	100	78	18	4-φ18	180	202	140
40	40	150	110	88	18	4-φ18	200	226	160
50	50	165	125	102	20	4-φ18	230	230	180
65	65	185	145	122	18	4-φ18	290	245	180
80	80	200	160	138	20	8-φ18	310	270	200
100	100	220	180	158	20	8-φ18	350	345	250
125	125	250	210	188	22	8-φ18	400	382	300
150	150	285	240	212	22	8-φ22	480	434	300
200	200	340	295	268	24	12-φ22	600	545	400
250	250	405	355	320	26	12-φ26	730	724	520
300	300	460	410	378	28	12-φ26	850	810	520

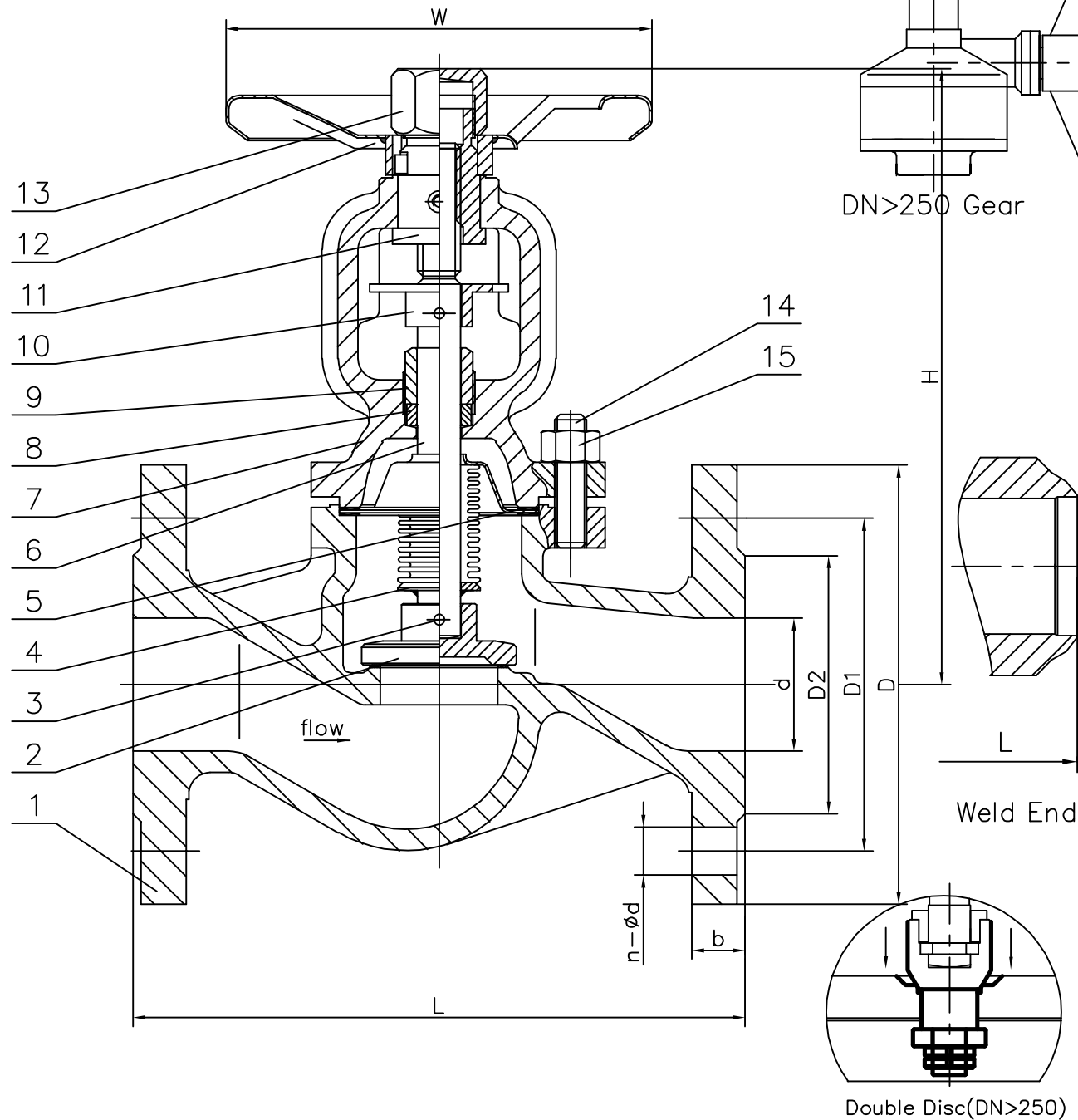
15	Bonnet Nut	ASTM A194 2H
14	Bonnet bolt	ASTM A193 B7
13	Handwheel Nut	Carbon Steel
12	Hand Wheel	Carbon Steel
11	Stem Nut	Copper Alloy
10	Stop Plank	Carbon Steel
9	Gland	Carbon Steel
8	Stem Packing	Graphite
7	Bonnet	ASTM A216 WCB
6	Stem	ASTM A182 F6a
5	Gasket	Graphite+SS
4	Bellows	SS304
3	Disc Pin	ASTM A276 420
2	Disc	ASTM A105+13Cr
1	Body	A216 WCB+13Cr
NO	PART NAME	MATERIAL

BELLOW GLOBE VALVES PN16bar

Design and Manufacture	DIN 3356
Face to Face Dimensions	DIN 3202 F1
Flanger Ends Dimensions	DIN 2543
Pressure Test	DIN 3230



DIN BELLOWS SEALED GLOBE VALVES PN16/25/40



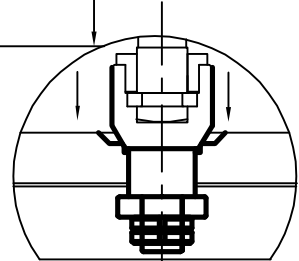
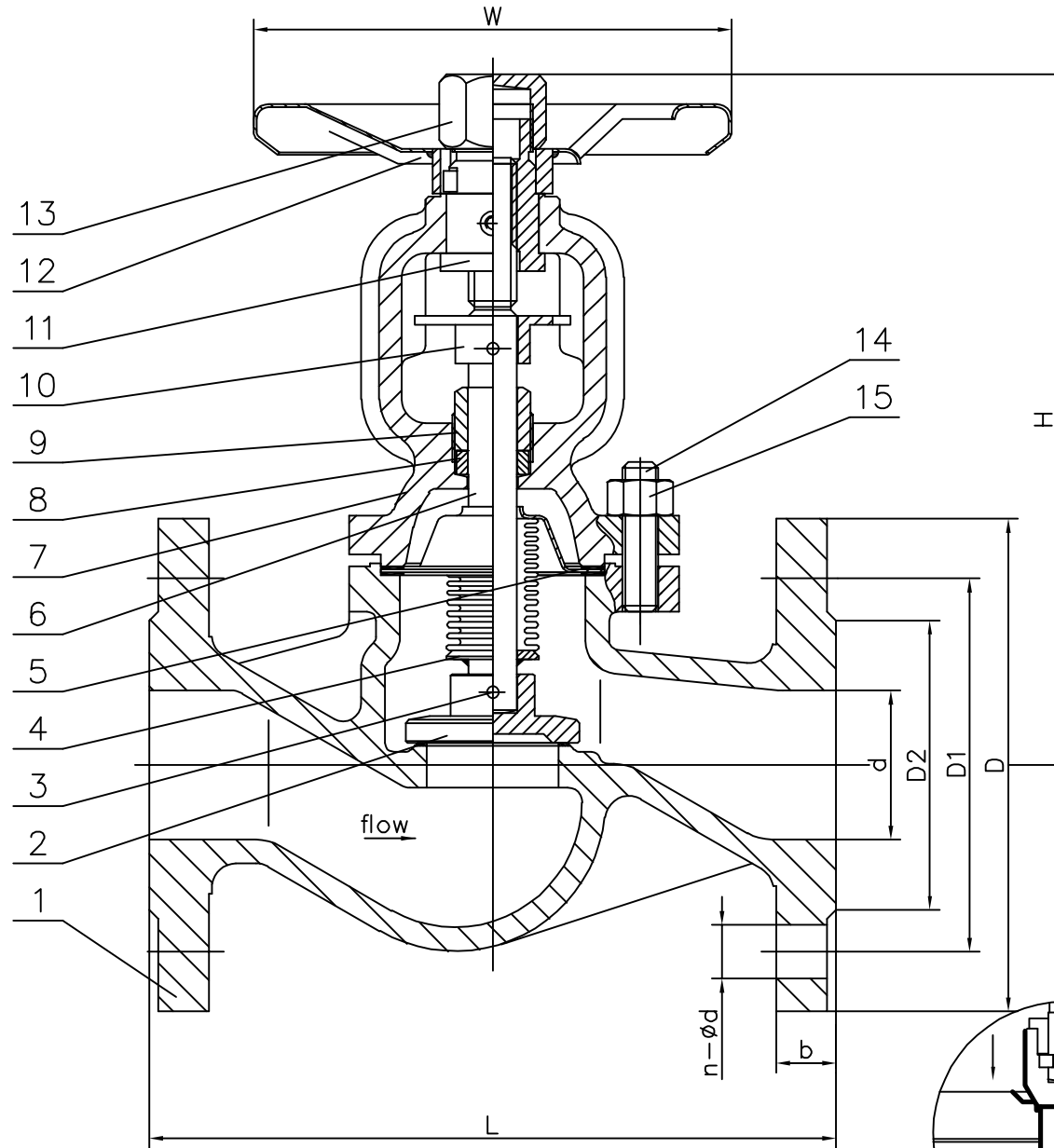
Nominal Diameter	Main Dimension (mm)									
	mm	d	D	D1	D2	b	n-φd	L(F1)	H	W
15	15	95	65	45	16	4-φ14	130	192	120	
20	20	105	75	58	18	4-φ14	150	192	120	
25	25	115	85	68	18	4-φ14	160	202	140	
32	32	140	100	78	18	4-φ18	180	202	140	
40	40	150	110	88	18	4-φ18	200	226	160	
50	50	165	125	102	20	4-φ18	230	230	180	
65	65	185	145	122	22	8-φ18	290	245	180	
80	80	200	160	138	24	8-φ18	310	270	200	
100	100	235	190	162	24	8-φ22	350	345	250	
125	125	270	220	188	26	8-φ26	400	382	300	
150	150	300	250	218	28	8-φ26	480	434	300	
200	200	360	310	278	30	12-φ26	600	545	400	
250	250	425	370	335	32	12-φ30	730	724	520	
300	300	485	430	395	34	16-φ30	850			
400	400	620	550	505	40	16-φ36	1100			
450	450	670	600	555	42	20-φ36	1200			
500	500	730	660	615	44	20-φ36	1250			

15	Bonnet Nut	ASTM A194 2H
14	Bonnet bolt	ASTM A193 B7
13	Handwheel Nut	Carbon Steel
12	Hand Wheel	Carbon Steel
11	Stem Nut	Copper Alloy
10	Stop Plank	Carbon Steel
9	Gland	Carbon Steel
8	Stem Packing	Graphite
7	Bonnet	ASTM A216 WCB
6	Stem	ASTM A182 F6a
5	Gasket	Graphite+SS
4	Bellows	SS304
3	Disc Pin	ASTM A276 420
2	Disc	ASTM A105+13Cr
1	Body	A216 WCB+13Cr
NO	PART NAME	MATERIAL

BELLOW GLOBE VALVES PN2.5Mpa	
Design and Manufacture	DIN 3356
Face to Face Dimensions	DIN 3202 F1
Flanger Ends Dimensions	DIN 2544
Pressure Test	DIN 3230



DIN BELLOWS SEALED GLOBE VALVES PN16/25/40



Double Disc(DN>200)

Nominal Diameter	Main Dimension (mm)								
	d	D	D1	D2	b	n-φd	L(F1)	H	W
15	15	95	65	45	16	4-φ14	130	192	120
20	20	105	75	58	18	4-φ14	150	192	120
25	25	115	85	68	18	4-φ14	160	202	140
32	32	140	100	78	18	4-φ18	180	202	140
40	40	150	110	88	18	4-φ18	200	226	160
50	50	165	125	102	20	4-φ18	230	230	180
65	65	185	145	122	22	8-φ18	290	245	180
80	80	200	160	138	24	8-φ18	310	270	250
100	100	235	190	162	24	8-φ22	350	345	300
125	125	270	220	188	26	8-φ26	400	382	350
150	150	300	250	218	28	8-φ26	480	434	350
200	200	375	320	285	34	12-φ30	600	545	450
250	250	450	385	345	38	12-φ33	730	724	520
300	300	515	450	410	42	16-φ33	850	810	520

15	Bonnet Nut	ASTM A194 2H
14	Bonnet bolt	ASTM A193 B7
13	Handwheel Nut	Carbon Steel
12	Hand Wheel	Carbon Steel
11	Stem Nut	Copper Alloy
10	Stop Plank	Carbon Steel
9	Gland	Carbon Steel
8	Stem Packing	Graphite
7	Bonnet	ASTM A216 WCB
6	Stem	ASTM A182 F6a
5	Gasket	Graphite+SS
4	Bellows	SS304
3	Disc Pin	ASTM A276 420
2	Disc	ASTM A105+13Cr
1	Body	A216 WCB+13Cr
NO	PART NAME	MATERIAL

BELLOW GLOBE VALVES PN40bar

Design and Manufacture	DIN 3356
Face to Face Dimensions	DIN 3202 F1
Flanger Ends Dimensions	DIN 2545
Pressure Test	DIN 3230