



SPECIFICATION FOR APPROVAL

CUSTOMER :

PRODUCT NAME: Centralized management power controller

PRODUCT MODEL: TSD-PWR350-DC1248

BRAND : TST (OEM/ODM)

DATE : 2024 / 06 / 26

DRAWING			CUSTOMER APPROVE
DESIGNED	CHECKED	APPROVED	
VANNE	YOUTRONG	Mark	
DATE	2024 / 06 / 26		Please return the visa after confirmation, thank you!

Shenzhen Tstone Technology Co.,Ltd

Mobile: 13640991523

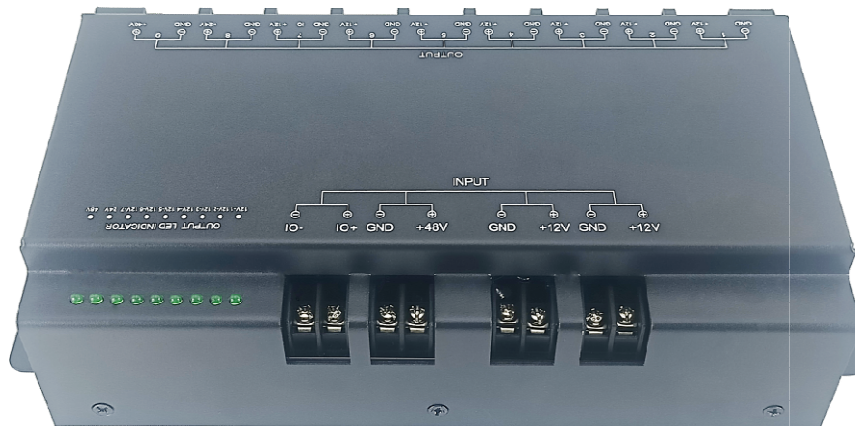
http: www.tstpoe.com

Add: Room 903, Building B-14C, First Industrial Zone, Baihua Community, Guangming
Street, Guangming District, Shenzhen, China



PRODUCT: Centralized management power controller

MODEL: TSD-PWR350-DC1248



Product Introduction

The TSD-PWR350-DC1248 is a power controller that supports simultaneous operation of multiple external devices by distributing voltage. It accepts DC 9-48V or DC 48V input and can output voltages in three modes: DC 12V 3A, DC 24V 3A, and DC 48V 3A. The maximum output power is 350W, and it supports I/O control.

The TSD-PWR350-DC1248 centralized management power controller can provide the required operating voltage to different external devices through voltage distribution, supporting up to 9 devices operating simultaneously. It is primarily used in commercial, industrial, and public service applications.

Product Description

The interface configuration of the TSD-PWR350-DC1248 is as follows:

Input ports (7.62mm fence-type terminal block): DC 12V*2, IO control *1, DC 48V *1;

Output ports (7.62mm fence-type terminal block): DC 12V 3A*7 +DC 24V 3A*1 +DC 48V 3A*1.



Dimensions: The main body measures 210 * 126 * 57.5 mm. With the mounting lug, the overall dimensions are 243 * 126 * 57.5 mm. Control function: It supports IO control. Product appearance: It features a matte-black hard metal shell. An aluminum heat-dissipation plate is installed inside the product. There are heat-dissipation holes on the left, right, and bottom sides to ensure good heat-dissipation performance. The product uses 7.62 barrier terminal block, which not only have good insulation and isolation functions but also facilitate user connections. Indicator lights: 9 green LED indicator lights to indicate the port output status.

The TSD-PWR350-DC1248 centralized power controller has a maximum output power of 350W. It can output 7 channels of DC 12V power, among which one channel can be controlled via IO. Through the IO input, the working status of one output channel can be controlled in real-time, meeting various user needs.

In addition, it can also output one channel of DC 24V and one channel of DC 48V power, enabling multiple high-power devices with different voltage requirements to work simultaneously.

The TSD-PWR350-DC1248 centralized power controller can be applied in various scenarios where multiple devices need to work simultaneously, effectively solving the problem of complex wiring. The EMC (Electromagnetic Compatibility) parameters of the internal circuit of the controller meet the requirements of IEC 61000-4-2/3/4/5/6 standards. The device is equipped with protection functions against lightning strikes, short-circuits, overloads, and high temperatures. The product has obtained certifications such as CE, FCC, and RoHS, and is selling well in many countries and regions around the world.

Product Features

- Input: Wide - voltage DC 9- 48V / DC 48V
- Output: DC 12V 3A × 7 + DC 24V 3A × 1 + DC 48V 3A × 1
- Maximum output power: 350W
- Equipped with an aluminum heat - sink plate
- Supports the simultaneous operation of 9 devices
- 4KV surge protection
- Over-heat protection, over-voltage protection, overload protection, and short-circuit protection
- Matte black hard metal shell



- 7.62 barrier terminal blocks
- Green LED indicator lights × 9
- Supports IO control
- EMC complies with the requirements of IEC 61000 - 4 - 2/3/4/5/6 standards
- Uses high-precision electronic components from well-known brands, ensuring stable performance.
- High-frequency low-impedance electrolytic capacitors are adopted to effectively reduce high-frequency losses and heat generation in the circuit.
- High-power high-conductivity low-impedance transistors are used, which have stable performance and low heat generation.
- The PCB is made of high-temperature-resistant environmentally friendly materials.

Specifications

Product parameter table	
Product Name	Centralized management power controller
Product Model	TSD-PWR350-DC1248
PoE Standard	/
Input Voltage	DC9-48V / DC 48V
Output	DC12V 3A *7 + DC 24V 3A *1+DC 48V 3A*1
Conversion Efficiency	≥85%
Power Mode	DC power supply
Conversion Mode	Non-isolated
Data Rate	/
Transmission Distance	/
Surge Protection	4KV
Circuit Protection	over-heat protection, over-voltage protection overload protection, short-circuit protection
LED Indicator	Green LED Indicator*9:indicate the port output status
Interface	Input port (7.62 barrier terminal block): DC 12V * 2+IO control * 1+ DC 48V * 1

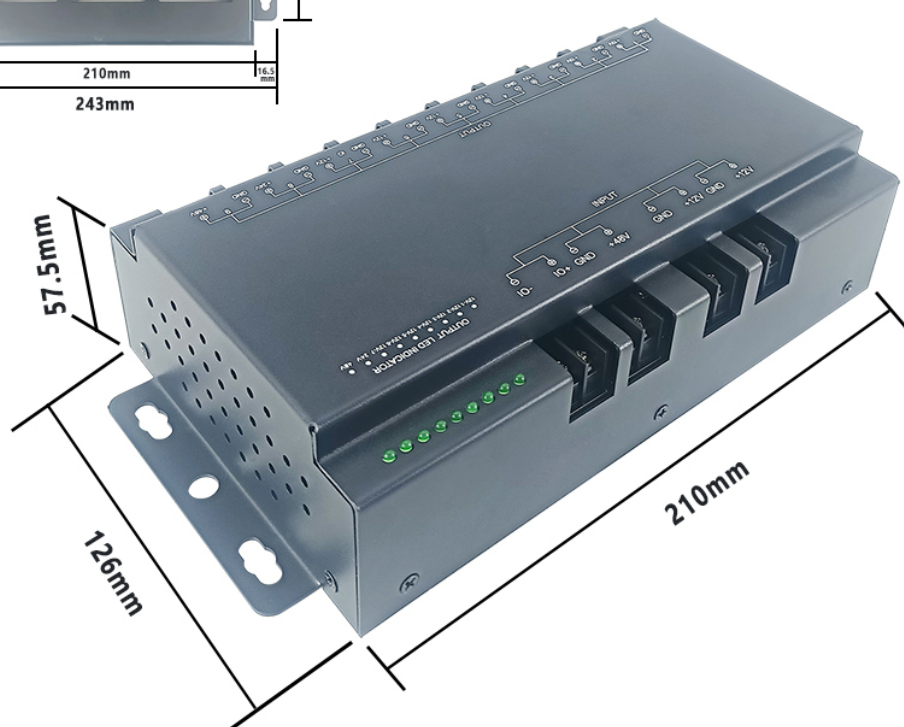
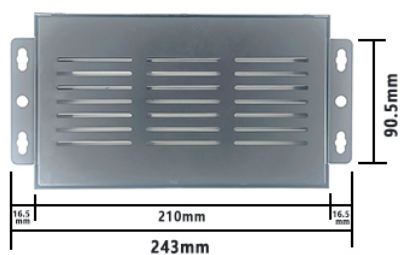


	Output port (7.62 barrier terminal block): DC 12V 3A * 7+DC 24V 3A * 1+DC 48V 3A * 1
Function	/
Material	Hard metal shell
Color	Matte black
Accessories	/
EMC	IEC 61000-4-2/3/4/5/6
Temperature	-30~65°C For Operating -40~85°C For Storage
Humidity	RH95% MAX (Non-condensation)
Weight	N.W: 1422g
Dimension	243 *126 *57.5mm
Package	Anti-static pearl cotton + paper box

Product Applications

The TSD-PWR350-DC1248 centralized management power controller is mainly used for outdoor equipment such as street lights. It can support multiple devices like cameras, speakers, pole-mounted screens and wireless bridges on street lights to work simultaneously, effectively enhancing the safety and management efficiency of the equipment. The controller also provides IO functions for users, enabling them to flexibly control the output status of the equipment. In addition, this product is being increasingly used in other industrial, commercial or educational fields. The advantages of the TSD-PWR350-DC1248, such as being simple and flexible, low-cost and high-efficiency, have won the favor of more and more customers at home and abroad.

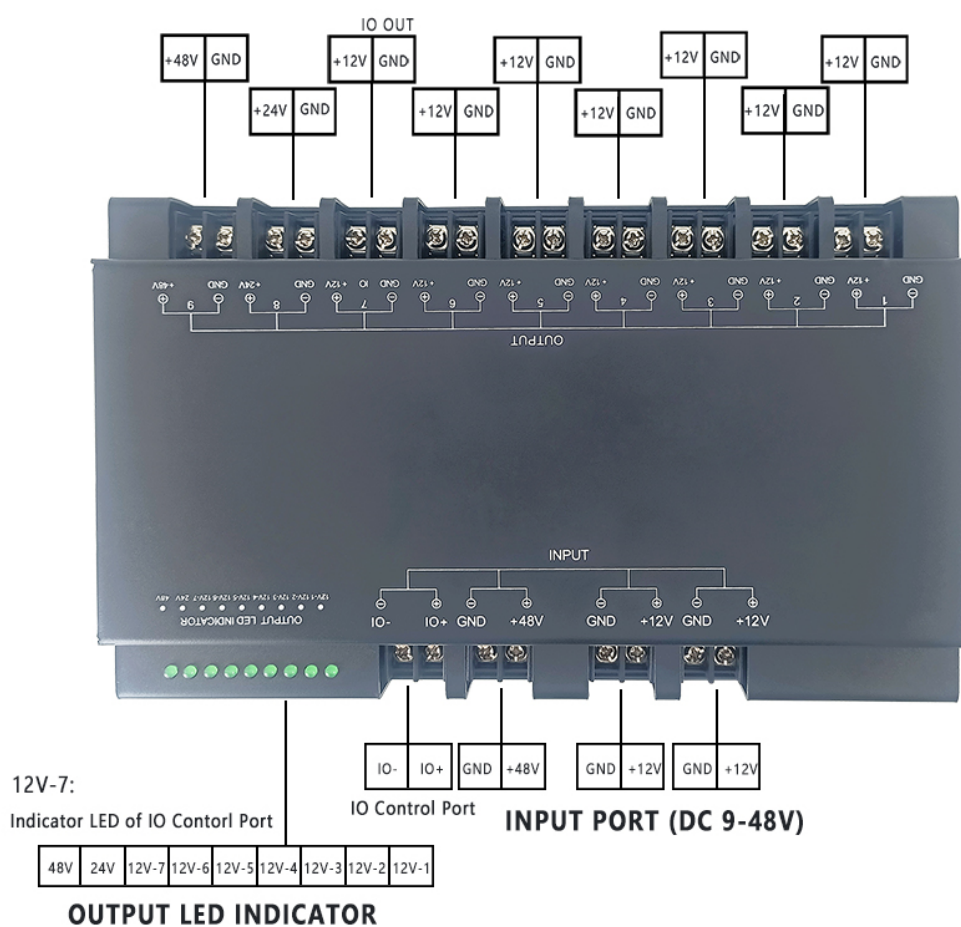
Dimensions



Interface Definition



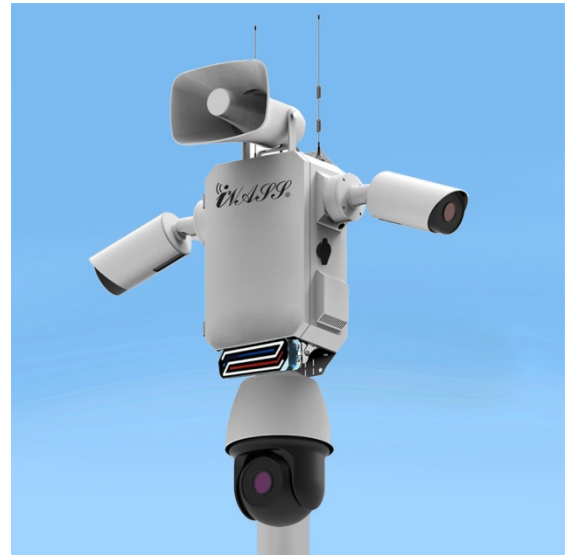
OUTPUT PORT: DC 12V 3A*7+DC 24V 3A*1+DC 48V 3A*1 350W



Application Scenarios



Intelligent urban lamppost



Multi - device power supply system

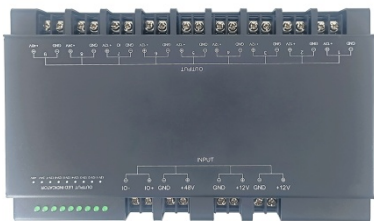


Solar centralized power supply system

Product Topology Diagram



Product Detail



Product Package



Package Size: 263*140*72 mm(L*W*H)

MPQ: 1 PCS

N.W: 1422 g

G.W: 1520 g