



Tiktok



Youtube



Website

**Office address**

Room 608, Building 1 Zhonghui International Mansion, Huicheng District, Huizhou, Guangdong Province, China

**Factory address(USA)**

BSL NEW ENERGY(USA) TECHNOLOGY CO.,LTD  
Address:1036 Jacobson Road. Garland,TX 75042  
E-Mail: sales@bslbattery.us  
Tel.+(571)412-2485

**Office address(European)**

BSL New Energy Technology European B.V.A  
ddress: Jollemanhof 221019GW Amsterdam

**Factory address**

Building 2, Area D, Qunyi Intelligent Manufacturing Industrial Park, Tonghu Ecological Intelligence Zone, Zhongkai, Huizhou, Guangdong, China

Key contact: Sales Department:  
**+86-752-2819-469**

E-mail:  
**inquiry@bsl-battery.com**

Website:  
**www.lithium-battery-factory.com**

# LiFePO4 Batteries For ELECTRIC CONSTRUCTION EQUIPMENT

Support your equipments the ultimate power upgrade with  
BSLBATT® Lithium-ion Batteries.



**www.lithium-battery-factory.com**

©2025 BSLBATT. All rights reserved BSLBATT. ISO and UL are property of the international organization for Standardization and Underwriters Laboratories respectively. Subject to revisions without prior notice.E.&OE.

Business Card Binding Position



# CORPORATE HISTORY

## 2011

Establishment WISDOM INDUSTRIAL POWER CO., LIMITED

Now known as BSL NEW ENERGY (HONGKONG) CO., LIMITED

## 2014

The Energy Storage Battery Division is growing rapidly, with product voltages extending to 48V/51.2V and an increasing range of applications.

Volume shipments of lithium batteries are also growing for the telecom sector and UPS.

## 2021

Established Huizhou BSL New Energy Technology Co., Ltd.

Launched the Huizhou lithium battery manufacturing and production line.

Our products are exported to more than 50 countries, and our quality and service are widely recognized.

## 2024

Established a new automated and modern factory in Huizhou, with an annual production capacity of 2 GWh. Established a factory in Maanshan, Anhui, with an annual production capacity of 1 GWh.

Launched a full range of industrial and commercial energy storage products. Established a warehouse and office in Mexico.

Angel round financing.

## 2012

HUIZHOU WISDOM POWER TECHNOLOGY CO., LTD.

The lead-acid battery business was further expanded, and foreign trade sales exceeded 100 million yuan.

## 2018

Established a lithium battery factory in Dongguan, China, with a production area of 6,000 square meters.

Launched the first rack-mounted and wall-mounted battery models for home energy storage, with over 7,000 units sold overseas.

The first generation of power battery modules has been developed, and the lithium power business unit is growing rapidly.

## 2022

A 2,000-square-foot warehouse and office were established in Dallas, Texas, USA.

Our products have passed UL 1973, UL 2580, IEC, Australia CEC, and other international certifications.

## 2025

Expected sales to reach 700 million RMB. Established Japanese branch and office.

Get certificate of Specialized, Refined, Differentiated, and Innovative Enterprise. Sales are expected to reach 100 million USD. IPO on the New Third Board.

## 2013

First lithium battery factory in Anhui, China. Lithium batteries shipped in bulk, 12V/24V for lead-acid replacement.

Forklift lithium battery--aqueous battery technology.

## 2020

Became the leading ESS brand in South Africa.

The second generation of ESS modules has been developed.

Became the #3 China lithium battery brand to be listed by Victron.

## 2023

Over 90,000 solar batteries have been installed in residential properties worldwide.

Over 10,000 power batteries are currently in operation worldwide.

We have surpassed \$68 million in sales revenue. A European office and warehouse have been opened.

Obtained high-tech enterprise certification.

## 2026

Go public on the Beijing Stock Exchange.

Sales are expected to reach 150 million USD.

Deploy 160 dealers.

Global employees increase to more than 400.

**113+**  
Countries

Global Deliveries

**UL2580**

The First Company In China To Obtain Certification

**18197**

Motive Power Lithium Batteries Deployed Worldwide

**13+**  
Years Lithium Experience

**6.2%**  
Continuous R&D Investment

**3** GWH+  
Delivered Capacity

**Top 5**  
China Motive Power Lithium Battery Supplier

**Electric Construction Equipment**

Preferred Chinese lithium battery supplier

**141+**

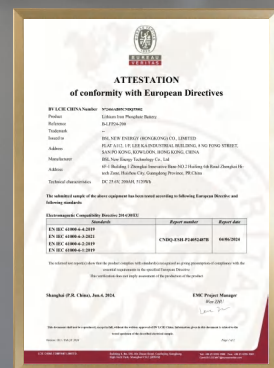
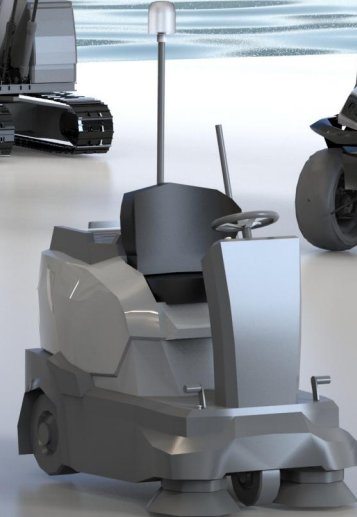
Self-developed Patents





# LIFEPO4 BATTERIES INDUSTRY LEADER

Power Up for Motive & Stationary Applications



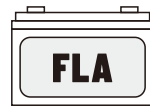


## Latest Technology. Huge Growth For Your Business

Switching from lead-acid batteries to lithium-ion batteries is simple, cost-effective, and will increase your fleet productivity and keep your personnel safe.



### COST FACTOR



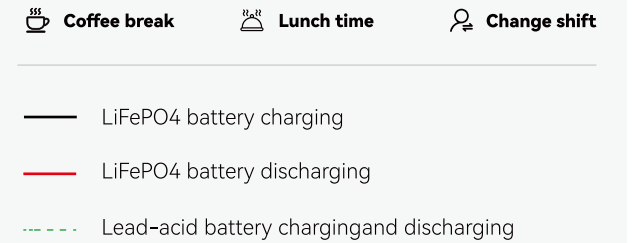
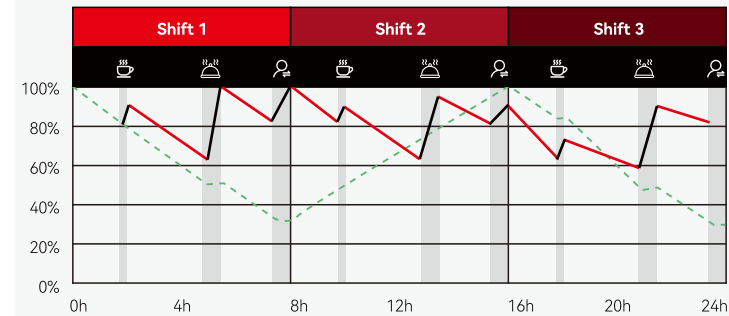
	FLA	AGM	GEL	BSLBATT
PURCHASE COST	\$	\$ \$	\$ \$ +	\$ \$ \$
INSTALLATION COST	\$	\$	\$	\$
MAINTENANCE COST	\$ \$ \$	\$	\$	...
CHARGING COST	\$ \$ \$ \$ \$	\$ \$ \$ \$ \$	\$ \$ \$ \$ \$	\$ \$
REPLACEMENT COST	\$ \$ \$ \$ \$	\$ \$ \$ \$ \$ +	\$ \$ \$ \$ \$	...
REPLACEMENT LABOR	\$ \$ \$	\$ \$ \$ \$	\$ \$ \$	...
OF REPLACEMENTS	█ █ █ █ █	█ █ █ █ █ █ █ █ █	█ █ █ █ █	...
CYCLE LIFE	↻ ↻ ↻	↻ ↻	↻ ↻ ↻	↻ ↻ ↻ ↻ ↻ +
TOTAL COST OVER LIFE	\$ \$ \$ \$ \$	\$ \$ \$ \$ \$ +	\$ \$ \$ \$ \$	\$ \$

## Charge At Any Time To Improve Efficiency

- Reduces the need for each charge.
- No need to frequently replace time-consuming batteries.
- Eliminates the risk of battery replacement accidents.
- Opportunistic charging during breaks, lunch, and shifts. Charge at any time when the device is not in use.

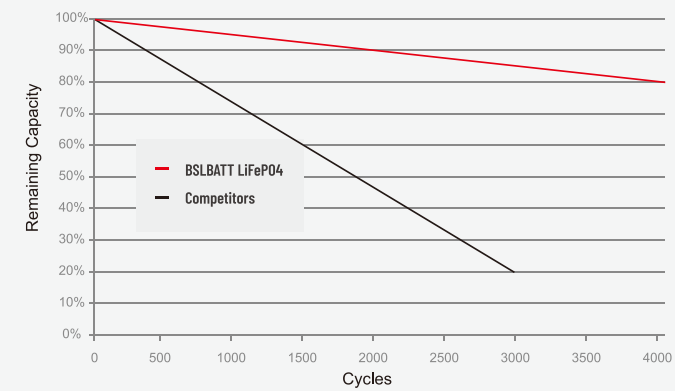


Typical charge and discharge of LiFePO4 batteries for 3 shifts



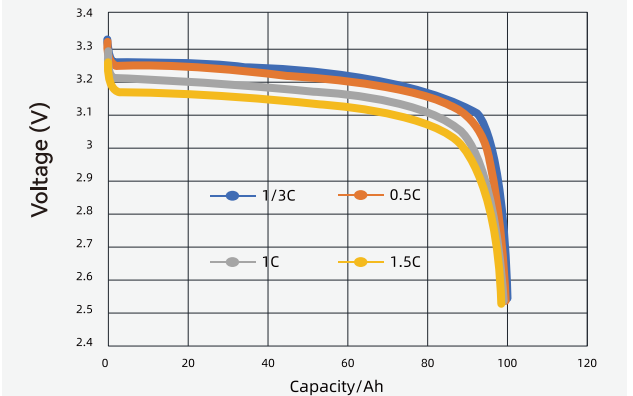
### CYCLE LIFE VS. DEPTH OF DISCHARGE (DOD) AT 80% DISCHARGE 1C/CHARGE 0.5C @ 25°C (77°F)

Based on published data from competitors



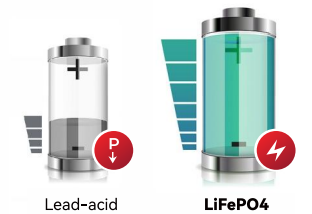
### DISCHARGE CURRENT: 1/3C / 0.5C / 1C / 1.5C

100Ah-Discharge Rate@25°C



## Consistent Power

- LiFePO4 batteries provide consistent power without loss of efficiency even at the end of a shift.



## Say goodbye to the need for dedicated charging rooms and frequent battery replacement

- Reduce the cost of frequent lead-acid battery replacement
- Eliminate storage space and extra maintenance time.
- No pollution, no need to add water, no odor, quiet and comfortable charging.







# WHY CHOOSE

BSLBATT LiFePO4 Battery



## Safe And Efficient

EVE and REPT LiFePO4 batteries are used, with high discharge rates, greater power and stable performance, and no voltage drop at the end of the cycle. Improves work efficiency. Reduces unplanned downtime and maximizes uptime.



## Fire Extinguishing System

Built-in fire extinguishing system for fire prevention (optional)



## Battery Protection

IP65-rated electrical components are fully enclosed to prevent dust and water intrusion to adapt to different construction site environments



## Long Life

The battery is designed to last up to 12 years and can withstand more than 4,500 deep charges and discharges



## Automotive-Grade Process

Automotive-grade shockproof process to cope with various complex road conditions



## Warranty

8-year/12,000-hour warranty



## Heating System

Normal charging and discharging can be achieved in extreme weather (optional)



## Zero Maintenance

Zero maintenance, no frequent battery replacement. Reduce battery maintenance labor costs. Reduce operating costs and risk of personal injury.



## Fast Charging

4 times faster than lead-acid batteries

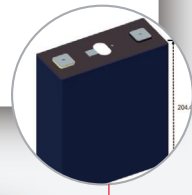
# BSLBATT®





BSLBATT's Electric Construction Equipment lithium batteries use LiFePO4 cells. Our cell has a cycle life of 3500-4500 times. In addition, some of our cells have a cycle life of more than 6000 times.

**Long Life Span, high To 6000 Times**



Battery capacity is one of the important performance indicators to measure battery performance. The actual capacity of our battery under certain conditions (discharge rate, temperature, termination voltage, etc.)  $\geq 100\%$  \*Nominal

**Discharge Capacity  $\geq 100\%$  \*nominal**



Our A cell is a cell that has no abnormality within the range of technical parameters that meet the national standard or above in all aspects.

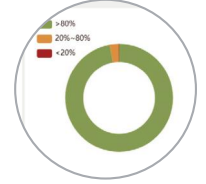
**Brand New Class A Cells**



High-performance 32-bit processor and high-precision front-end sampling chip, multiple hard core technologies improve cell consistency management and estimation accuracy.

Our BMS provides remote real-time online monitoring of batteries.

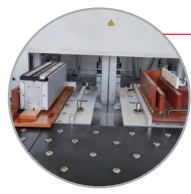
**Remote Intelligent BMS**



We use high-quality aluminum bus bars, use laser welding to seamlessly and perfectly weld the aluminum bus bar and the lug of the cell. As well as the use of aluminum alloy and steel frames, which greatly improves the strength and stiffness of the battery pack.

Therefore, our modules are more able to withstand the harsh working environment, charge, and discharge expansion.

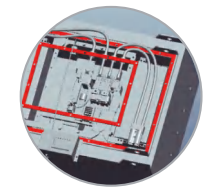
**Reliable Module Welding**



Our battery uses a waterproof sealing ring that prevents moisture from passing through.

The battery case is a battery pack that is effectively protected and can prevent potentially harmful substances from damaging the battery.

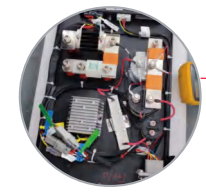
**Waterproof Structure**



PDU integrates BMS main control, charging module, DC module, etc. our PDU has more vehicle functional modules, which are more integrated in function and more mature in structure.

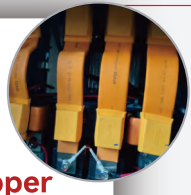
The PDU configuration is flexible, and we can customize and develop it according to the customer requirements, which can meet the needs of different customers and models.

**Integrated PDU**



Our Bus bars are customized based on different configurations, it is flexible to operate, reliable and the lowest cost.

**Flexible Copper Busbar**



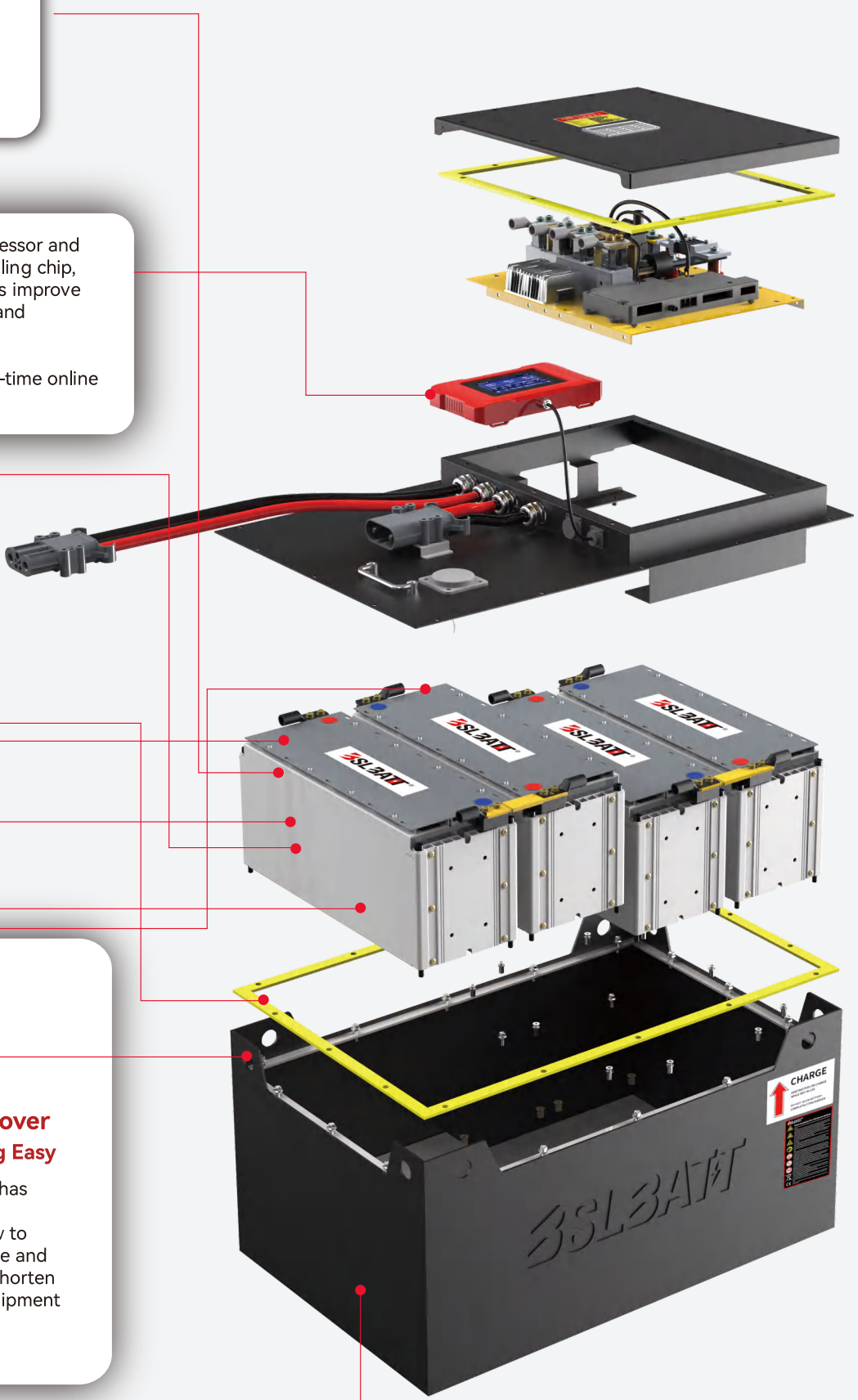
Battery upper cover has specially designed a maintenance window to facilitate maintenance and inspection, so as to shorten the downtime of equipment maintenance.

**Maintenance Cover Makes Maintaining Easy**



Safety is the magic weapon to ensure the smooth completion of our careers, and safety is vital to us. The battery is fully insulated and protected, and flame retardant materials are used.

**Safety Material Insulated and protected with flame retardant materials**





# LiFePO4 Electric Construction Equipment Battery Components

## Superior Power & Optimal Performance

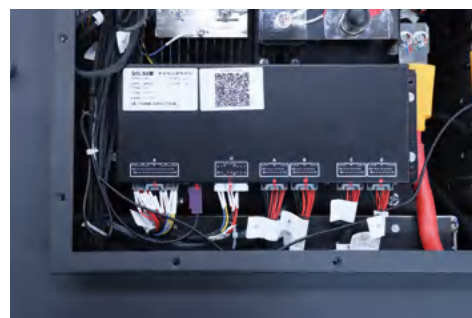
The latest 4.3 inch magnetic screen



### Battery Management System (BMS)

The built-in BMS is equipped with automotive-grade components assuring safety, top quality and high energy density to provide a fully optimized solution for demanding industrial applications.

BMS software ensures the battery provides peak performance when in operation, delivers longer run time between charges, maximizes the total battery lifespan and to communicate well between the charger, battery and users.



### The BMS can offer:

#### All-time Cell Balancing and Battery Management.

Through intelligent balancing strategy, the BMS can always maintain the consistency of the cells and realize the balance between individual cells.

#### Battery Real-time Monitoring and Communication Through CAN.

Monitoring cell voltage, electric current and battery temperature so that any movement outside the normal range disconnects the cell or the entire battery.

#### Fault Alarm and Safety Protection.

When the battery is less than 10%, it will beep to prompt for charging, over/under voltage, low/over temperature, over current or other faults will prompt to make the battery safe. Safety always comes first.

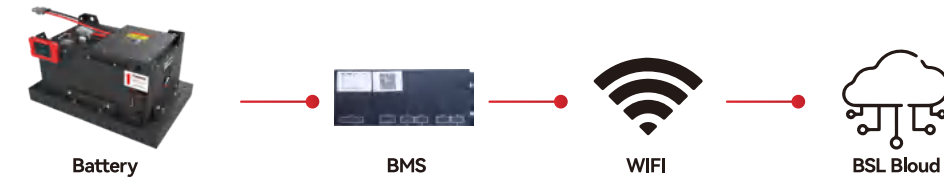
## BSL Cloud platform

Create fleets.  
Monitor each of your batteries:

### CLOUD-BASED TELEMATICS AND ASSET MANAGEMENT

Keep your fleets running around the clock with intelligent fleet management

Track usage patterns and diagnose issues remotely for real-time monitoring, maximum efficiency and operator safety—BSL BMS will notify you before an issue occurs. View battery performance and data, monitor fleet activity, and generate real-time metrics from the web portal.



### WORKFLOW

### BENEFITS

- View/share real-time data
- Diagnose issues remotely
- Manage maintenance costs
- Impact energy usage and savings
- Optimize operator safety
- Improve productivity
- Eliminate unplanned downtime
- Avoid unexpected breakdowns
- Monitor equipment allocation
- Real-time alerts
- Optional GPS tracking capability

### ADVANTAGES

- Real-time fleet monitoring
- Performance metrics and data reports
- Generate custom alerts to notify multiple users
- Aggregate data to identify over/under utilized batteries
- Optimize operator practices
- Password-protected account
- Custom user permissions and functionality
- Saves 1 month of full debug data locally
- Wi-Fi/Cellular/Bluetooth compatibility





# Multiple Charging Ways

## More Versatility and Flexibility

- Mobile Container DC charging
- DC Fast Charging
- Tow Charging



## Charging System

- |                             |                          |                           |                          |                             |                            |
|-----------------------------|--------------------------|---------------------------|--------------------------|-----------------------------|----------------------------|
|                             |                          |                           |                          |                             |                            |
| Over Voltage Protection     | Under Voltage Protection | Over Current Protection   | Short Circuit Protection | Over Temperature Protection | Low Temperature Protection |
|                             |                          |                           |                          |                             |                            |
| Reverse Polarity Protection | Overcharge Protection    | Cell Balancing Protection | Charging Time Protection | Leakage Protection          | Automatic Power Off        |

# Technical Specifications

- Battery Cell: Lithium Iron Phosphate (LiFePO4)
- Rated Voltage: <1,000V
- Rated Capacity: 15 Ah ~ 840 Ah
- Cycle Life: More Than 3,500 Times
- Operating Temperature: -20°C~60°C
- Protection Level: IP65



< 1000V

Best Standard Customized Batteries for Electric Construction Equipment

