

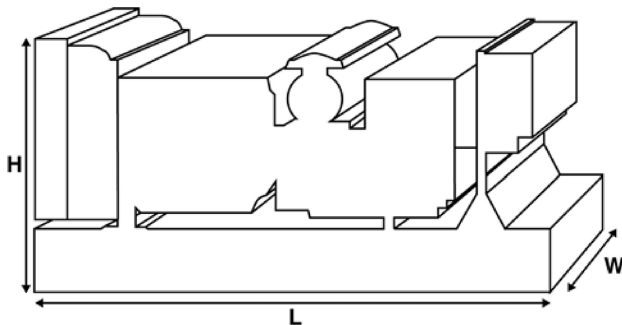
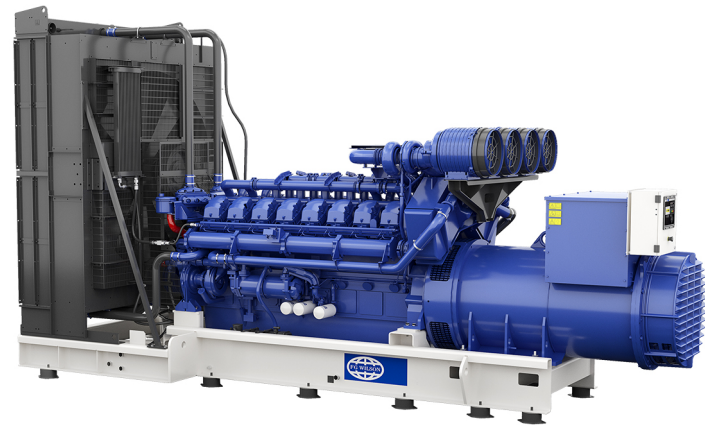


# P2500-1P

## Output Ratings

Voltage, Frequency		Prime	
400/230V, 50 Hz	kVA	2500	
	kW	2000	
	kVA		
	kW		

Please refer to the output ratings technical data section for specific generator set outputs per voltage.



## Dimensions and Weights (est)

Length	mm	6938
Width	mm	2184
Height	mm	2900
Weight (Dry)	kg	13478
Weight (Wet)	kg	13878

Ratings in accordance with ISO 8528, ISO 3046, IEC 60034, BS5000 and NEMA MG-1.22.  
Generator set pictured may include optional accessories.

## Prime Rating

These ratings are applicable for supplying continuous electrical power (at variable load as defined in ISO 8528-1) in lieu of commercially purchased power. There is no limitation to the annual hours of operation

## Standard Reference Conditions

Note: Standard reference conditions 25°C (77°F) Air Inlet Temp, 100m (328 ft) A.S.L. 30% relative humidity.  
Fuel consumption data at full load with diesel fuel with specific gravity of 0.85 and conforming to BS2869: 1998, Class A2.

FG Wilson offer a range of optional features to allow you to tailor our generator sets to meet your power needs.  
Options available include:

- Upgrade to CE Certification
- A wide range of Sound Attenuated Enclosures
- A variety of generator set control and synchronising panels
- Additional alarms and shutdowns
- A selection of exhaust silencer noise levels

For further information on all of the standard and optional features accompanying this product please contact your local Dealer or visit:

[www.xindacreation.com](http://www.xindacreation.com)

# P2500-1P



## Ratings and Performance Data

Engine Make	Perkins		
Engine Model:	4016-61TRG3X		
Alternator Make	Leroy Somer		
Alternator Model:	LL9324R		
Control Panel:	DSE7420		
Base Frame:	Heavy Duty Fabricated Steel		
Circuit Breaker Type:	n/a		
Frequency:	50 HZ	60 HZ	
Engine Speed: RPM	rpm	1500	
Fuel Tank Capacity:	litres (US gal)	N/A (N/A)	
Fuel Consumption Prime	litres (US gal)	528.4 (139.6)	
Fuel Consumption	litres (US gal)		

## Engine Technical Data

No. of Cylinders	16		
Alignment	60deg Vee		
Cycle	4 STROKE		
Bore	mm (in)	160 (6.3)	
Stroke	mm (in)	190 (7.5)	
Induction	TURBOCHARGED AIR TO WATER CHARGE COOLED		
Cooling Method	WATER		
Governing Type	ELECTRONIC		
Governing Class	ISO 8528		
Compression Ratio	13.0:1		
Displacement	L (cu. in)	61.1 (3730)	
Moment of Inertia:	kg m <sup>2</sup> (lb/in <sup>2</sup> )	20.72 (70803)	
Voltage	24		
Ground	Negative		
Battery Charger Amps	55		
Engine Weight Dry	kg (lb)	5570 (12280)	
Engine Weight Wet	kg (lb)	5847 (12890)	

## Engine Performance Data

		50 Hz	60 Hz
Engine Speed	rpm	1500	
Gross Engine Power Prime	kW (hp)	2183 (2927.4)	
Gross Engine Power	kW (hp)		
BMEP Prime	kPa (psi)	2857.2 (414.4)	
BMEP	kPa (psi)		

# P2500-1P



## Fuel System

Fuel Filter Type:	Replaceable Element			
Recommended Fuel:	Class A2 Diesel			
Fuel Consumption at	100 % Load	75 % Load	50 % Load	
50 Hz Prime:	l/hr (US gal/hr)	528.4 (139.6)	389.2 (102.8)	266.9 (70.5)

(Based on diesel fuel with a specific gravity of 0.86 and conforming to BS2869 classA2,EN590)

## Air System

		50 Hz	60 Hz
Air Filter Type:	Replaceable Element		
Combustion Air Flow Prime	m <sup>3</sup> /min (cfm)	175 (6180)	
Max. Combustion Air Intake Restriction	kPa	3.7 (14.9)	

## Cooling System

		50 Hz	60 Hz
Cooling System Capacity	l (US gal)	400 (105.7)	
Water Pump Type:	Centrifugal		
Heat Rejected to Water & Lube Oil: Prime	kW (Btu/min)	830 (47201)	
Heat Radiation to Room*: Prime	kW (Btu/min)	236.8 (13467)	
Radiator Fan Load:	kW (hp)	77 (103.3)	
Radiator Cooling Airflow:	m <sup>3</sup> /min (cfm)	2184 (77127)	
External Restriction to Cooling Airflow:	Pa (in H <sub>2</sub> O)	250 (1)	

\*: Heat radiated from engine and alternator  
 Designed to operate in ambient conditions up to 50°C (122°F).  
 Contact your local FG Wilson Dealer for power ratings at specific site conditions.

## Lubrication System

Oil Filter Type:	Spin-On, Full Flow		
Total Oil Capacity:	l (US gal)	238 (62.9)	
Oil Pan Capacity:	l (US gal)	213 (56.3)	
Oil Type:	API CG 15W-40 CH4		
Oil Cooling Method:	WATER		

## Exhaust System

		50 Hz	60 Hz
Maximum Allowable Back Pressure:	kPa (in Hg)	4 (1.2)	
Exhaust Gas Flow: Prime	m <sup>3</sup> /min (cfm)	525 (18540)	
Exhaust Gas Temperature: Prime	°C (°F)	560 (1040)	

# P2500-1P



## Alternator Physical Data

No. of Bearings:	1
Insulation Class:	H
Winding Pitch:	2/3
Winding Code	6S
Wires:	6
Ingress Protection Rating:	IP23
Excitation System:	AREP
AVR Model:	D510

\* dependant on voltage code selected

## Alternator Operating Data

Overspeed: rpm	1800
Voltage Regulation: (Steady state) %	+/- 0.5
Wave Form NEMA = TIF:	50
Wave Form IEC = THF: %	2
Total Harmonic content LL/LN: %	3.5
Radio Interference:	EN61000-6
Radiant Heat: 50 Hz kW	79 (4493)
Radiant Heat: 60 Hz kW	

## Alternator Performance Data 50 Hz:

		415/240 V	400/230 V	380/220 V
Voltage Code				
Motor Starting Capability*	kVA	8870	8266	7491
Short Circuit Capacity	%	300	300	300
Reactances	X <sub>d</sub>	2.848	3.037	3.396
	X' <sub>d</sub>	0.219	0.239	0.259
	X'' <sub>d</sub>	0.107	0.115	0.128

Reactances shown are applicable to prime ratings.

\*Based on 30% voltage dip at 0.4 power factor.

\*\* With optional independant excitation system (PMG / AUX winding)



## P2500-1P

### Dealer Contact Details



信达共创  
CINDA CREATION

#### Beijing Xinda Creation Machinery Equipment Co.Ltd...

Contact person: Aaron shang

Website: [www.xindacreation.com](http://www.xindacreation.com)

Phone : (+86)(0)13911564503

E-mail: [aaron.shang@xindacreation.com](mailto:aaron.shang@xindacreation.com)

### Documentation

Operation and maintenance manual including circuit wiring diagrams.

### Generator Set Standards

The equipment meets the following standards: BS5000, ISO 8528, ISO 3046, IEC 60034, NEMA MG-1.22.

### Warranty

730 – 2500 kVA electric power generation products in Prime applications the warranty period is 12 months from date of start-up, unlimited hours (8760 hours) or 24 months from date of start-up, limited to 6000 hours .

FG Wilson manufactures product in the following locations:

Northern Ireland • Brazil • China • India

With headquarters in Northern Ireland, FG Wilson operates through a Global Dealer Network.

To contact your local Sales Office please visit the FG Wilson website at [www.xindacreation.com](http://www.xindacreation.com).