

Product manual

XDL20-XCD Truck Tail Plate Power Control Box

•  Waterproof IP65 •  Low-battery Alarm •  With Lock Latch •  Integrated design

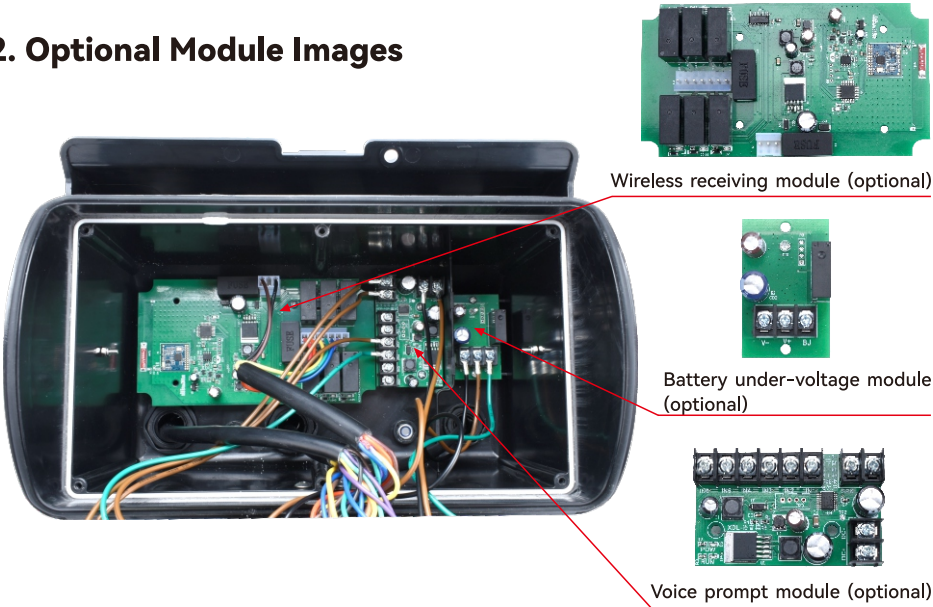


XINDALI INDUSTRIES CO., LTD.

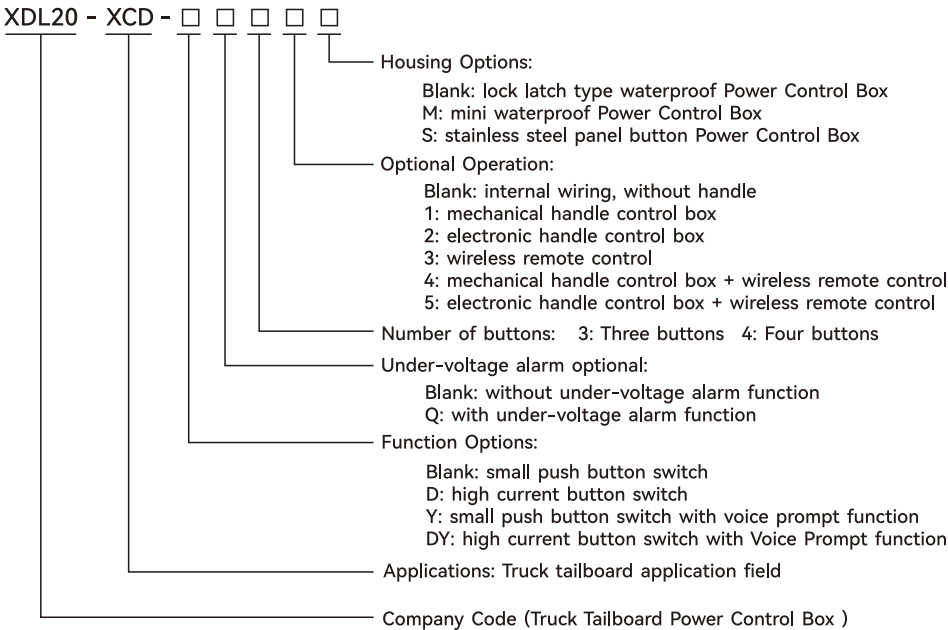
1. Figure



2. Optional Module Images



3. Model and Meaning

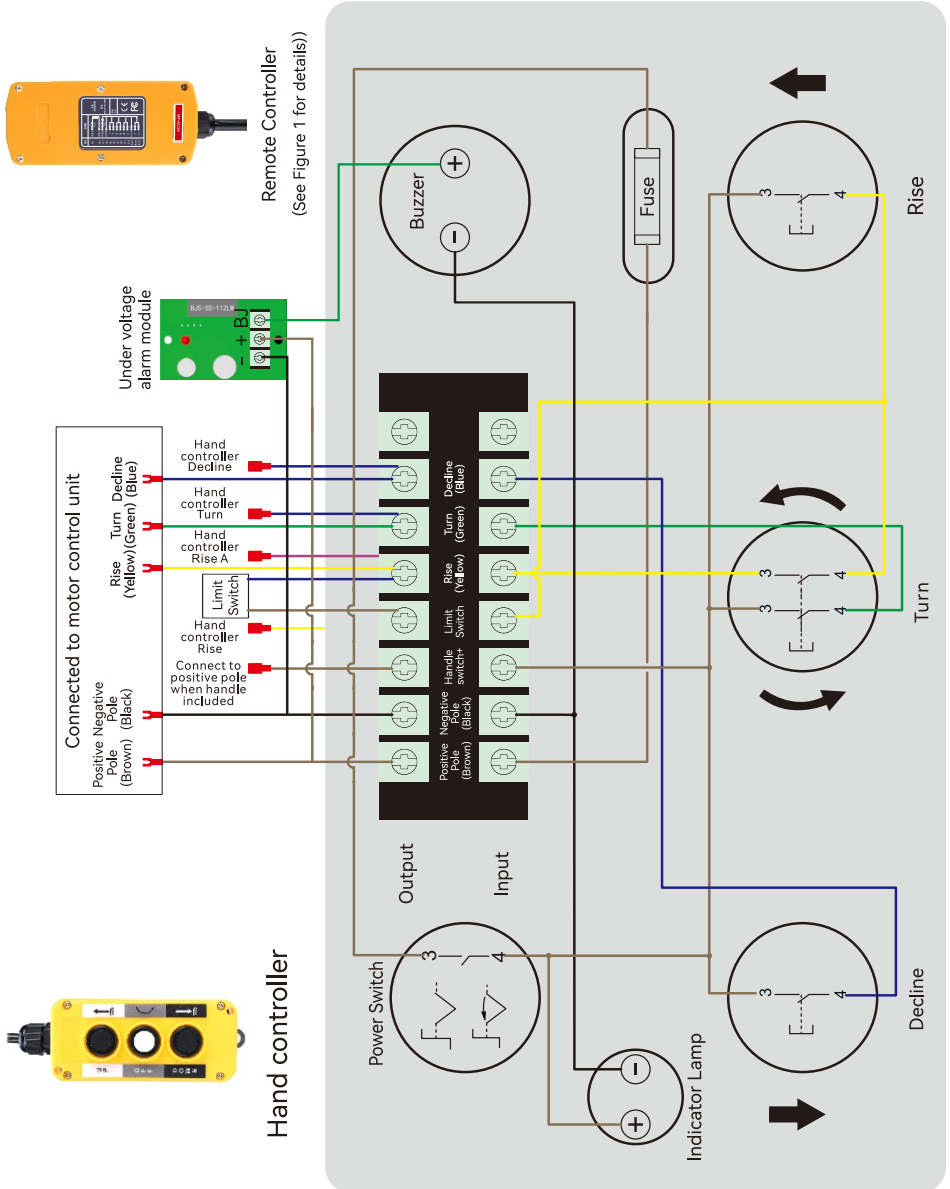


4. Technical Parameters

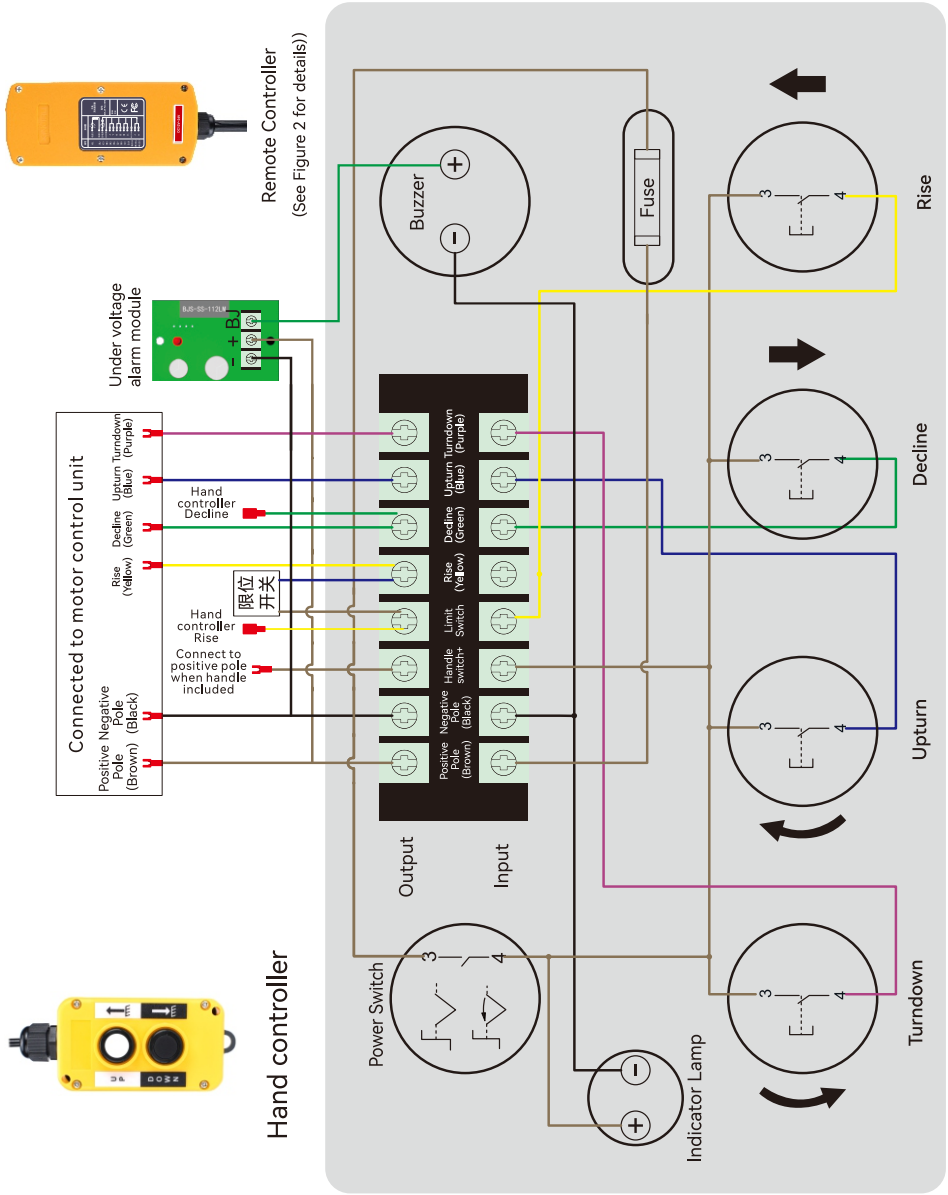
Housing Material	ABS
Protection Level	IP65
Operating Power Supply	Ue:DC12V~24V Ie:5A
Power Consumption	< 2W
Cable Length/Diameter	Signal cable of power unit 3 meters, signal cable of limit switch 1.5 meters, signal cable of handle control box 0.6 meters (customizable)/0.75mm ²
Operating Temperature Range	-35°C~+55°C
Operating Humidity Range	< 90%RH
Air Pressure	86~106KPa
Product Weight	3 holes / 4 holes 2.5kg

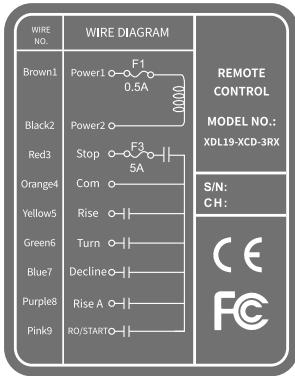
5. Internal Wiring Diagram

3-button Wiring Diagram



4-button Wiring Diagram



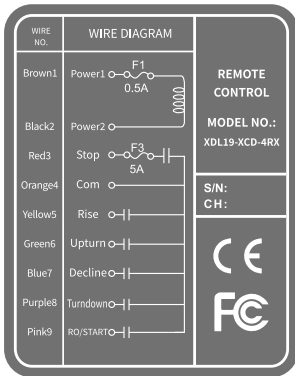


XDL19-XCD-3

1	Brown	Power positive
2	Black	Power negative
4	Orange	Common wire (combine with No. 1 brown wire to connect the positive terminal of power supply)
5	Yellow	Rise
6	Green	Turn
7	Blue	Decline
8	Purple	Rise A (skip limit switch to connect with rise)
9	Pink	Pink Connect to N/C input port (CADRO wiring type)
3	Red	Connect to Rise and Decline(CADRO wiring type)

Notice: Remove the wire connected to the N/C Output port of Liftgate Control Box and connect it with red wire, then connect the pink wire to the N/C Output port.

Figure 1. Remote Controller Wiring Diagram

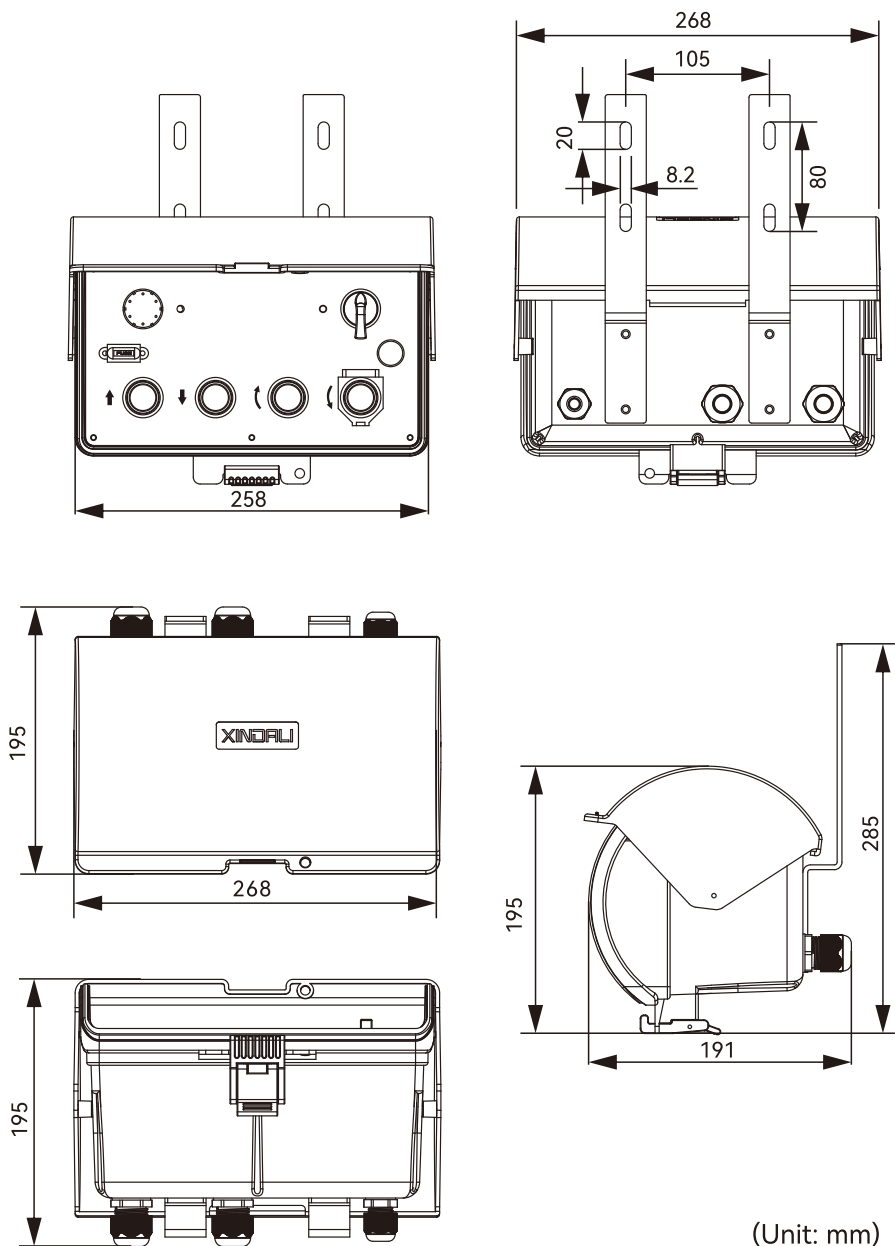


XDL19-XCD-4

1	Brown	Power positive
2	Black	Power negative
3	Red	Main switch (not connected if not always on)
4	Orange	Common wire (combine with No. 1 brown wire to connect the positive terminal of power supply)
5	Yellow	Rise
6	Green	Upturn
7	Blue	Decline
8	Purple	Turndown
9	Pink	Start

Figure 2. Remote Controller Wiring Diagram

6. Dimensions



(Unit: mm)

7.Operation Instructions

7.1 Three-Buttons Power Control Box

- 7.1.1 Tail plate raise operation: press the “rise” button.
- 7.1.2 Tail plate lowering operation: press the “Decline” button.
- 7.1.3 Tail plate flip up operation: Simultaneously press “Rise” and “Turn” buttons.
- 7.1.4 Tail plate flip down operation: Simultaneously press “Decline” and “Turn” buttons.
- 7.1.5 After use please turn off the power switch and close the control box cover.

7.2 Four-Buttons Power Control Box

- 7.2.1 Tail plate raise operation: press the “Rise” button.
- 7.2.2 Tail plate lowering operation: press the “Decline” button.
- 7.2.3 Tail plate flip up operation: press the “Upturn” button.
- 7.2.4 Tail plate flip down operation: press the “Turndown” button,
(this button included with a protective cover to prevent mis-operation).
- 7.2.5 After use please turn off the power switch and close the control box cover.

7.3 Indicator lamp and under-voltage alarm status:

- 7.3.1 When the control box power is on, the power indicator light stays red.
- 7.3.2 Under-voltage alarm module red indicator light on when power on. When Under-voltage situation happens, indicator light flashing and buzzer works.
- 7.3.3 Under-voltage alarm module 12V battery set value and recovery value:
Under-voltage set value $\leq 9.5V \pm 0.1V$, alarm recovery value $\geq 13V \pm 0.1V$.
- 7.3.4 Under-voltage alarm module 24V battery set value and recovery value:
Under-voltage set value $\leq 20V \pm 0.1V$, alarm recovery value $\geq 26V \pm 0.1V$.

7.4 Voice Broadcasting (Voice Function):

- 7.4.1 Offer voice broadcasting customization with company name, such as:
“XINDALI reminds you, liftgate UP, attention please!”
- 7.4.2 General voice broadcastings: “liftgate UP, attention please!”
“liftgate DOWN, attention please!” “liftgate Fold UP, attention please!”
“liftgate Fold Down, attention please!”
- 7.4.3 Offer voice broadcasting for low-battery, “Low-battery, start the truck!”
- 7.4.4 Turn on and off the voice broadcasting: Simultaneously press “Rise” , “Turn” and “Decline” buttons.

8. Warranty Instructions

8.1 Quality Assurance

Xindali guarantees that the product fully complies with the specifications announced before delivery. Proper installation ensures normal operation. However, Xindali does not guarantee that the operation of this product is without interruptions or zero errors.

8.2 Warranty Period

Xindali provides a two-year warranty from the date of delivery, ensuring that customers will not have any product problems within two years. If there is any proof of product quality defects during the warranty period, Xindali is willing to repair it. Any in-warranty defective product will be sent to the designated maintenance point for repair and the one-way freight to the maintenance point is at customer expense, and the freight to the customer is at Xindali expense.

8.3 Exception

The above warranty scope does not include damage caused by consumable parts such as casings, fuses, screws, limit switches, button switches, indicator lights, or installation errors, and does not include faults caused by improper use by customers, force majeure, natural disasters, insufficient maintenance, neglect of operating environment specifications, unauthorized changes, incorrect use, or disassembly and structural changes by customers.

Remarks:

- ※※ The above warranty matters have no other express or implied warranty matters.
- ※※ The compensation provided by the warranty is the only compensation for the customer, and our company is not responsible for any direct, indirect, special, accidental or causal damages.

9. Attentions

9.1 General Attentions:

- Only personnel trained in handling such equipment should attempt to disassemble the machine to avoid damage and potential harm.
- This manual is for reference by the using entity; detailed technical issues should be consulted with the manufacturer.
- The machine undergoes rigorous testing before delivery, but should not be used in situations under potential danger or possible losses.
- After use, the power switch should be turned off, and the cover of control box closed.
- If the control box is not used for an extended period, it should be locked to prevent unauthorized operation.

- Cease operation in the event of lightning or interference.
- Warning: Do not operate in conditions where there is water inside to prevent damage to internal circuit boards.
- Turn off the battery power supply and control box power during installation or maintenance.
- The manufacturer reserves the right to modify the content of this manual without prior notice.

9.2 Operator Precautions:

- Users must undergo comprehensive training to familiarize themselves with the operation.
- Users must be in good health, mentally alert, and able to identify and judge the safety of operations.
- Operators should pay attention to the indicator lights on the control box. If the power indicator light is not on, there may be abnormal or faulty conditions, and it should be immediately stopped.
- Users should pay attention to the low-battery alarm buzzer on the control box. If the buzzer beeps for a long time, the battery is undervoltage. At this time, the operation should be stopped and the truck engine should be started to charge the battery.
- Stop operation immediately once serious interference is detected with the equipment.
- Before use, please carefully note the handling of the following emergency situations.

9.3 Installation Precautions:

- Before installation, be sure to turn off the main power supply of the battery.
- When installing the control box, screws must be tightened, and an indoor location should be selected to avoid poor contact or internal water ingress.
- Understand the distribution and functional settings of the control box (including signal output) to avoid incorrect wiring.

9.4 Emergency situation handling:

In case of an emergency, follow these steps and immediately notify the manufacturer.

- Turn off the control box power.
- Turn off the battery power supply.
- Notify the manufacturer and identify the cause.

10. Other Types of Control Boxes



Three-button
power control box
(high current type) **XDL20-XCD-D3**



Four-button
power control box
(high current type) **XDL20-XCD-D4**



Three-button
power control box
(high current with
voice prompt type) **XDL20-XCD-DY3**



Four-button
power control box
(high current with
voice prompt type) **XDL20-XCD-DY4**



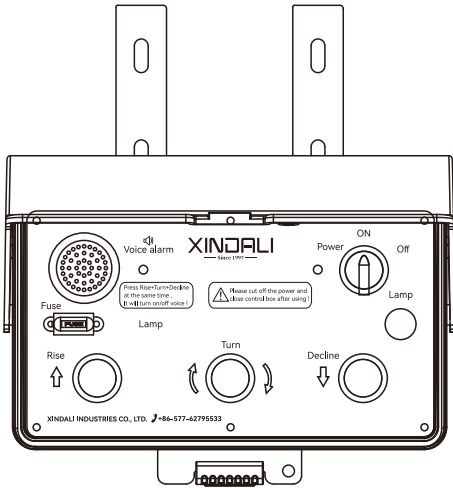
Three-button
power control box
(stainless steel panel type) **XDL20-XCD-3S**



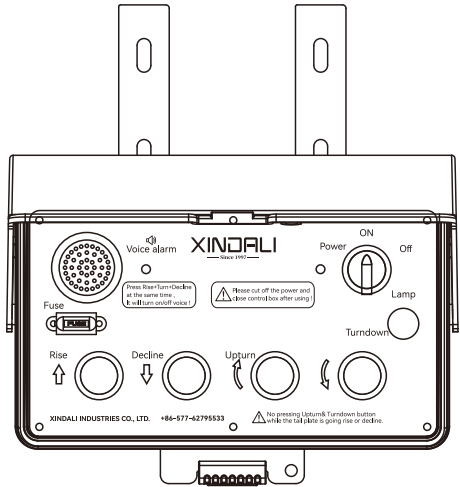
Three-button
power control box
(mini type) **XDL20-XCD-3M**

Customer Service Hotline:

+86-577-62795533



With voice prompt
XDL20-XCD-Y3



With voice prompt
XDL20-XCD-Y4



Scan the code for more
product information

XINDALI INDUSTRIES CO., LTD.

This manual is compiled by the Technical R&D Center of Xindali Industries Co., Ltd. It is only used to showcase the representative products. Xindali reserves the right to make necessary improvements or changes to this manual due to internal changes, upgrades, or the adoption of new production processes, or to correct printing errors and related information. If this causes inconvenience in your inquiries, please contact our technical department directly.

Vol.1.2

© Copyright Xindali Industries Co., Ltd. All Rights Reserved. Printed in China.



www.xindali.com