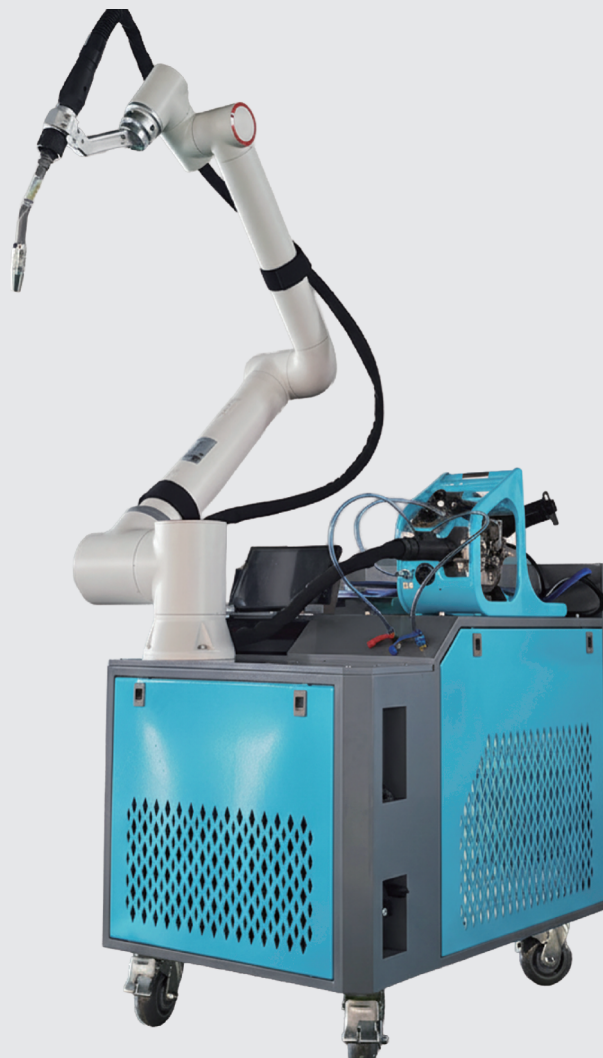


KeyGree

Collaborative Robot



KG-Y系列 协作机器人

Collaborative robot

功能 Function

协作机器人 Collaborative robots.

应用行业 Application

造船、集装箱、工程机械、风电、钢结构等.

Shipbuilding, container manufacturing, construction machinery, wind power, steel structures, etc.

性能特点 Characteristics

● 小型、轻量设计，轻便灵活.

Small size, lightweight design, compact and flexible.

● 方便的移动方式可到达不同的工作现场，具有紧凌的外观和易于移动的特点.

The convenient moving method enables access to different work sites. It features a sleek appearance and is easy to move.

● 焊接功能包含：直线、圆凯、段焊、多层多道及外部联动轴匹配.

The welding functions include: straight line welding, circular arc welding, segmented welding, multi-layer multi-pass welding, and external linkage axis matching.

● 配备直观的用户界面，可视化显示焊接参数、工件信息和操作选项.

Equipped with an intuitive user interface, it provides visual display of welding parameters, workpiece information and operation options.

● 操作员可以通过这个界面轻松控制机器人的动作和焊接过程.

Operators can easily control the robot's movements and the welding process through this interface.

● 提高产品外观质量，焊缝美观，提升市场竞争力.

Improve the appearance quality of the product, make the welds attractive, and enhance market competitiveness.



●配有先进的自动化控制系统，操作简单、可10秒实现编程起弧焊接，能够执行焊接任务而无需人工干预。

Equipped with an advanced automated control system, the operation is simple. It can achieve programmed arc welding in just 10 seconds and can perform welding tasks without the need for human intervention.

●可根据预定的焊接路径和参数自主完成工作。

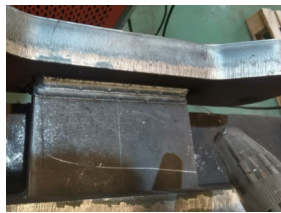
It can independently complete the work according to the pre-determined welding path and parameters.

●机器人通过先进的传感技术，采用人工拖动确定焊接点位，使机器人能够准确地记录定位焊接位置完成轨迹编程。

The robot, through advanced sensing technology, uses manual dragging to determine the welding point position, enabling the robot to accurately record the positioning of the welding location and complete the trajectory programming.

●用以解决焊工劳动强度，加快作业速度，提高工作质量，降低人力成本及风险。

To address the issue of welders' labor intensity, accelerate the operation speed, improve work quality, reduce labor costs and risks.



标准配置 Standard configuration	可选配件 Optional Accessory
机器人本体 Robot body	冷却水箱 Cooling water tank
推车 Garden cart	
MIG-500P 脉冲电源 MIG-500P pulse power supply	磁铁 Magnet
气冷焊枪 Air-cool welding gun	
人机交互平板电脑 Human computer interactive tablet computer	水冷焊枪 Water cooled welding gun

技术参数 Technology parameter

型号 Item	KG Y620-3	KG Y920-5	KG Y1400-10
机器人本体 Main unit of robot	1. 六轴协作机器人 Six axis collaborative robot	1. 六轴协作机器人 Six axis collaboratrye robot	1. 六轴协作机器人 Six axis collaborativg robot
	2. 负载 Load:3Kg	2. 负载 Load:5Kg	2. 负载 Load:10Kg
	3. 机器人重复定位精度 Robot repetitive positioning accuracy: ± 0.02mm	3. 机器人重复定位精度 Robot repetitive positioning accuracy: ±0.02mm	3. 机器人重复定位精度 Robot rapatitlve positioning accuracy: ± 0.05mm
	4. 最大工作范围 Max.range:622mm	4. 最大工作范围 Max.range:992mm	4. 最大工作范围 Max.range:1400mm
	5. 磁吸固定，可脱离移动车 Magnetic fixing, can be apart from trolley	5. 磁吸固定，可脱离移动车 Magnetic fixing, can ba apart from trolley	5. 本体重量 Body weight: 40kg
	6. 本体重量 Body weight:15kg	6. 本体重量 Body weight:20.6kg	
机器人控制器 Robot controller	标配有线 Standard configuration wired, 可选配无线 Wireless optional		
人机交互系统 Interface			
焊接工艺软件 Welding technology software	1. 全中文界面 Chinese interface 2. 独立开发 Independent development 3. 丰富焊接工艺包 Abundant welding technology kit 4. 操作简单 Easy operation		
焊接电源	350A/500A 可达 Optional		
Welding power source	标配空冷 Standard configuration air cooing. 选配水冷 Water cooling aptional		
外置送丝机 External wire feeder			
便携式移动车 Portable trolley (可选配 Optional)	外形尺寸宽 Dimenslons and Width:600mm 升降高度、长度可根据实际需求设计 The lifting height and length can be designed according to actual needs		

KG-Y系列 协作机器人

Collaborative robot

功能 Function

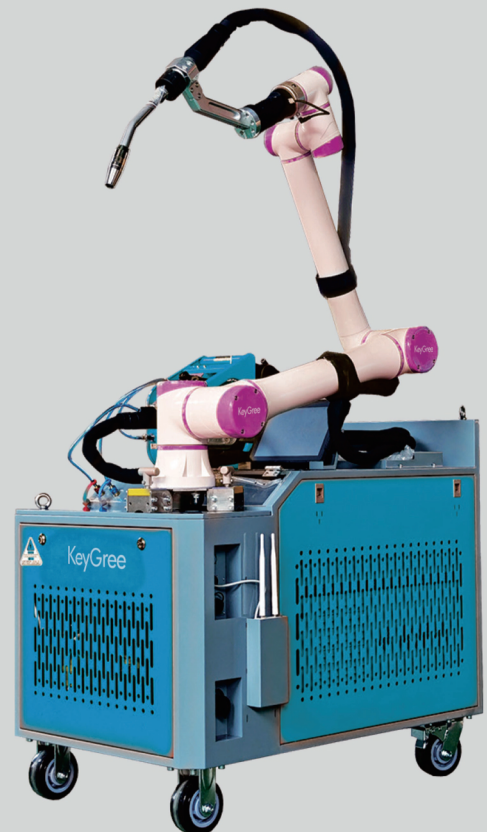
协作机器人 Collaborative robots.

应用行业 Application

造船、集装箱、工程机械、风电、钢结构等。
Shipbuilding, container manufacturing, construction machinery, wind power, steel structures, etc.

性能特点 Characteristics

- 操作简单，适合非专业人员。
The operation is simple and suitable for non-professionals.
- 常现焊缝10秒可以实现起弧焊接。
The weld seam often appears and arc welding can be achieved within 10 seconds.
- 焊接质量和外观好，同行竞争力强。
High welding quality and excellent appearance, strong competitiveness among peers.
- 降低企业成本，机器人焊接时，焊工可以同时焊接其他不方便的位置，相当于多一个焊工。
Reduce enterprise costs. When using robot welding, the welder can simultaneously perform welding at other inconvenient positions, which is equivalent to having an additional welder.
- 适合大型工件，不方便移动的工作件，多品类，少批量。
Suitable for large-sized workpieces, those that are difficult to move, various types, and small batches.
- 灵活移动方便，适用性强。
Flexible movement is convenient and highly applicable.
- 人机结合是未来方向，解决目前焊工招工难问题。
The integration of humans and machines is the future trend, which can solve the current problem of difficulty in recruiting welders.
- 价格低廉，成本回收快。
Low price, quick cost recovery.





标准配置 Standard configuration	可选配件 Optional accessory
机器人本体 Robot body	冷却水箱 Cooling water tank
推车 Garden cart	
MIG-500P 脉冲电源 MIG-500P pulse power supply	磁铁 Magnet
气冷焊枪 Air-cool welding gun	
人机交互平板电脑 Human computer interactive tablet computer	水冷焊枪 Water cooled welding gun

技术参数 Technology parameter

型号 Model	KG917-G6a	KG1300-G4a	KG1500-G9a	KG1800-GBL
机械臂自重 Weight	21kg	36kg	37kg	68kg
额定负载 Rated load	6kg	12kg	9kg	20kg
工作半径 Working radius	917mm	1300mm	1500mm	1800mm
焊接电源 Welding source	350A/500A 气保焊机 MIG WELDER			
自由度 Freedom	6个旋转自由度 6 rotational degrees of freedom			
末端最大速度 Max. speed at the end	3m/s	3m/s	3m/s	4m/s
重复定位精度 Repeat positioning accuracy	±0.02mm	±0.03mm	±0.05mm	±0.05mm
安装方式 Installation	任意角度安装 Any angle installation			
额定功率 Rated Power	260W	550W	550W	1500W
材料 Material	铝合金 Aluminum Alloy			
工作环境温度 Surrounding temperature	-5°C-55°C			
工作环境湿度 Humidity	5%-90%RH, 无凝露 No condensation			
IP等级 IP level	IP65			
噪声 Noise	≤60dB			