

# SHAREMAY

Shantou Sharemay Plastic Mould Industry Co.,Ltd



WEBSITE



ALIBABA

# SHAREMAY

Shantou Sharemay Plastic Mould Industry Co.,Ltd

## PRODUCT CATALOGUE



WEBSITE



ALIBABA

# INTRODUCTION OUR COMPANY

**SHANTOU SHAREMAY PLASTIC MOULD INDUSTRY CO.,LTD**  
**10.68 MILLION YUAN OF REGISTERED CAPITAL**

PRODUCTS INCLUDE LUNCH BOXES, FRESH CONTAINERS,  
AIRTIGHT JARS, WATER KETTLES, KITCHEN WARES AND ETC.

**25**  
ACRES  
STANDARD  
WORKSHOP  
BUILDING SIZE

**14**  
YEARS  
PROFESSIONAL  
PRODUCTION OF  
PLASTIC PRODUCTS

**5000**  
TONS  
THE ANNUAL  
PRODUCTION  
CAPACITY

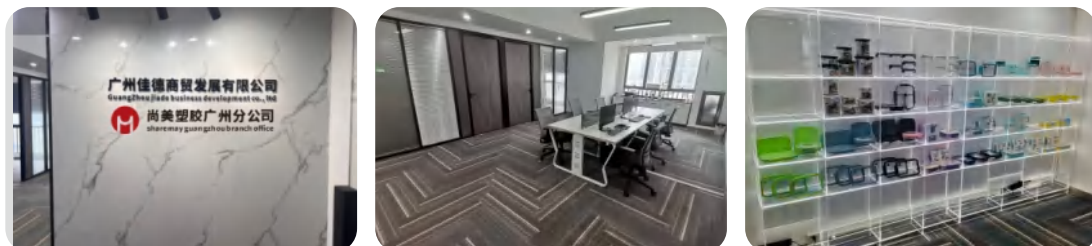
**120**  
STAFFS

**77**  
PATENT

SHANTOU SHAREMAY IS A PLASTIC MOLD AND PLASTIC  
HOUSEWARE MANUFACTURER SINCE THE ESTABLISHMENT IN 1982.  
THE BUSINESS HAS COVERED IN DOZENS OF COUNTRIES AND  
REGIONS SUCH AS EUROPE,THE U.S.,SOUTH AMERICA,THE MIDDLE  
EAST AND SOUTHEAST ASIA.WE ARE INSISTING ON THE PRINCIPLE  
OF QUALITY FIRST,REPUTATION FIRST ,OUR FACTORY IS  
DEDICATED TO PROVIDING SINCERE SERVICE FOR ALL THE OLD  
AND NEW CLIENTS.WELCOME ALL THE CUSTOMERS TO CONTACT  
US FOR BUSINESS AND COOPERATION.AND WE ARE EXPECTING TO  
ACHIEVE A BRIGHTER FUTURE TOGETHER WITH YOU.



IN 2025, WE OPENED SHAREMAY BRANCH IN  
GUANGZHOU.THE ESTABLISHMENT OF GUANGZHOU  
COMPANY CAN MAKE US CLOSER TO CUSTOMERS.CONDUCTIVE  
TO BUSINESS DEVELOPMENT.



## OUR PROCESS



**SPECIAL  
DESIGN**



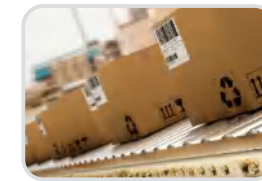
**LAYOUT DESIGN  
AND MAKE A  
PROOF**



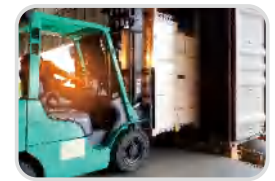
**MOLD  
PRODUCTION**



**COMPLETE  
ON TIME**



**PACKAGING**



**SHIPMENTS**

## CERTIFICATION TESTING



**PASS ISO9001 INTERNATIONAL  
QUALITY MANAGEMENT SYSTEM**



**PASS BSCI**



**THE UNITED STATES  
FDA FOOD DETECTION**



LFGB (EU) No 10/2011 DGCCRF



# TRITAN<sup>™</sup> FROM EASTMAN

## ENVIRONMENTALLY FRIENDLY MATERIALS

1

### MATERNAL AND INFANT-GRADE SAFETY MATERIALS ELIMINATE HEALTH CONCERNS

Tritan<sup>™</sup> copolyester eliminates endocrine disruptors like BPA and BPS at the source. Certified by international authorities including the U.S. FDA and EU EFSA for food contact, it's safe for direct contact with infant and toddler food. Even when holding acidic juices or hot soups ( $\leq 110^{\circ}\text{C}$ ), it won't release harmful substances—ensuring peace of mind with every meal.

2

### CRYSTAL-CLEAR TRANSPARENCY FOR BOTH APPETITE APPEAL AND VISUAL ELEGANCE

With ultra-high clarity—over 90% light transmission and under 1% haze—the colors and textures of food inside are instantly visible. Whether it's the vibrant hues of fresh-cut fruit, the crisp freshness of salads, or the tempting sheen of cooked dishes, everything is vividly showcased to enhance mealtime enjoyment.

3

### MILITARY-GRADE IMPACT RESISTANCE DURABILITY BEYOND EXPECTATIONS

Impact strength of 650-980J/m far surpasses ordinary plastic containers. Withstands drops from tabletops without shattering, leaving no sharp edges. Dual buffers for temperature and corrosion resistance, suitable for diverse scenarios.

- Wide temperature range: Withstands temperatures from  $-10^{\circ}\text{C}$  (freezing) to  $110^{\circ}\text{C}$  (dishwasher-safe), allowing direct use for hot meals, chilled fruits, or sterilization in disinfection cabinets
- Chemical resistance: Resists daily chemicals like detergents, cooking oils, and vinegar. No odor retention over time, eliminating common plastic discoloration and yellowing

4

### ECO-FRIENDLY AND SUSTAINABLE REDUCING THE BURDEN ON OUR PLANET

Select models utilize Tritan Renew recycled material, employing molecular recycling technology to reduce reliance on fossil-based raw materials and cut carbon emissions by 62%. With a lifespan 3-5 times longer than conventional plastic lunch boxes, these products minimize single-use tableware consumption and promote a green lifestyle.

5

### SAFETY & HEALTH

Tritan material is BPA-free, ensuring safe storage of hot foods even when heated at high temperatures.

6

### HIGH TRANSPARENCY

Crystal clear like glass, yet lighter and more shatter-resistant than glass.

7

### TEMPERATURE RESISTANT

Microwave and dishwasher safe, effortlessly handles both hot and cold foods.

8

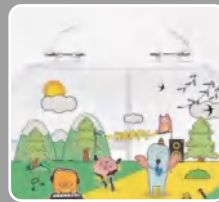
### LIGHTWEIGHT & DURABLE

Perfect for daily commutes, student lunches, and fitness meals. Choosing a Tritan lunchbox means embracing a lifestyle that prioritizes both health and quality. Enjoy every meal with peace of mind and comfort!





# SNACK BOX



HANDLE DESIGN



ECO-FRIENDLY MATERIALS



860  
ML

**NO.6359**  
LUNCH BOX

QUANTITY: 36pcs  
SIZE: 21.2X16.6X5.15cm  
MEAS: 51 X 43 X 32.5cm

# LUNCH BOX



## WATER BOTTLE



HANDLE HOLE DESIGN  
EASY TO CARRY



UPDATED AIRTIGHT  
SILICONE CIRCLE IT IS  
OVERTURN LEAKAGE PROOF



PUSH-PULL AND UP-DOWN  
TO OPERATE THAT MORE  
PORTABLE AND HYGIENIC

## WATER BOTTLE



FLIPPING BUCKLE  
DIRECTING DESIGN



ONE CLIP WITH TWO USAGES  
CAN USE WITH STRAW



SILICONE SEALED RING  
LEAKPROOF



290  
ML

**NO.7601**  
WATER BOTTLE

QUANTITY: 48pcs  
SIZE: 7.7X4.7X18cm  
MEAS: 38.5X33X35cm



400  
ML

**NO.7602**  
WATER BOTTLE

QUANTITY: 48pcs  
SIZE: 8.5X8.6X15.1cm  
MEAS: 38X38X52cm



FOUR-SIDES  
LOCKING BUCKLE



SILICONE SEALED  
RING LEAKPROOF



ECO-FRIENDLY  
MATERIALS



SILICONE  
AIR BUTTON



730  
ML

**NO.6360**  
LUNCH BOX

QUANTITY: 48pcs  
SIZE: 18.8X13.8X6.3cm  
MEAS: 56.5X38.5X40cm

1000  
ML

**NO.6361**  
LUNCH BOX

QUANTITY: 36pcs  
SIZE: 21.7X15.7X6.3cm  
MEAS: 47.8X44X40cm



# SALAD BOWL



FOUR-SIDES  
LOCKING BUCKLE



SILICONE SEALED  
RING LEAKPROOF



ECO-FRIENDLY  
MATERIALS

WITH REUSABLE  
ICE PACK



**1230 ML NO.6368**  
SALAD BOWL

QUANTITY: 36pcs  
SIZE: 17.3X17.3X11.2cm  
MEAS: 37.5X56 X55cm



**1230 ML NO.6369**  
SALAD BOWL

QUANTITY: 36pcs  
SIZE: 17.3X17.3X10cm  
MEAS: 53X53X41.5cm

# LUNCH BOX



SILICONE  
AIR BUTTON



FOUR-SIDES  
LOCKING BUCKLE  
SILICONE SEALED  
RING LEAKPROOF



ECO-FRIENDLY  
MATERIALS



**1150 ML NO.6364**  
LUNCH BOX

QUANTITY: 48pcs  
SIZE: 23.2X17.25X6.3cm  
MEAS: 53X47X39.5cm



**1150 ML NO.6365**  
LUNCH BOX

QUANTITY: 36pcs  
SIZE: 23.2X17.25X6.3cm  
MEAS: 53X47X39.5cm



# LUNCH BOX



FOUR-SIDES  
LOCKING BUCKLE



SILICONE SEALED  
RING LEAKPROOF



ECO-FRIENDLY  
MATERIALS



SILICONE  
AIR BUTTON



840  
ML

**NO.6370Y**

**SALAD BOWL**

QUANTITY: 36pcs

SIZE: 21.6X15.6X5.4cm

MEAS: 48X44X34cm

1100  
ML

**NO.6371Y**

**SALAD BOWL**

QUANTITY: 36pcs

SIZE: 21.6X15.6X6.3cm

MEAS: 48X44X39.5cm

1280  
ML

**NO.6372Y**

**SALAD BOWL**

QUANTITY: 36pcs

SIZE: 21.6X15.6X7.4cm

MEAS: 48X44X46cm

# LUNCH BOX



FOUR-SIDES  
LOCKING BUCKLE



SILICONE SEALED  
RING LEAKPROOF



ECO-FRIENDLY  
MATERIALS



840  
ML

**NO.6373**

**SALAD BOWL**

QUANTITY: 48pcs

SIZE: 21.5X15.5X4.8cm

MEAS: 47.5X43.5X40cm

1100  
ML

**NO.6374**

**SALAD BOWL**

QUANTITY: 48pcs

SIZE: 21.5X15.5X5.9cm

MEAS: 47.5X43.5X48cm

1280  
ML

**NO.6375**

**SALAD BOWL**

QUANTITY: 48pcs

SIZE: 21.5X15.5X6.9cm

MEAS: 47.5X43.5X56.5cm



# STAINLESS STEEL LUNCH BOX



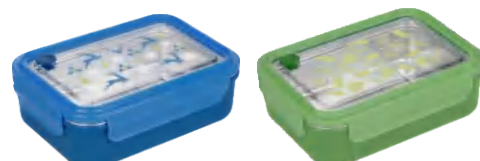
SUS304  
STAINLESS STEEL



**800 ML** **NO.6016**  
STAINLESS STEEL LUNCH BOX  
QUANTITY: 36pcs  
SIZE: 19X13.7X6.8cm  
MEAS: 56X28X42.5cm



**500 ML** **NO.6019**  
STAINLESS STEEL LUNCH BOX  
QUANTITY: 36pcs  
SIZE: 18.8X13.9X5.8cm  
MEAS: 60.5X30.5X39cm



**1100 ML** **NO.6017**  
STAINLESS STEEL LUNCH BOX  
QUANTITY: 24pcs  
SIZE: 21.3X15.4X7.3cm  
MEAS: 43X31X44.5cm



**1300 ML** **NO.6020**  
STAINLESS STEEL LUNCH BOX  
QUANTITY: 24pcs  
SIZE: 18.8X13.9X9.4cm  
MEAS: 57X27.5X38cm



**720 ML** **NO.6023**  
STAINLESS STEEL LUNCH BOX  
QUANTITY: 48pcs  
SIZE: 15.4X14.9X7.1cm  
MEAS: 60X30.5X43cm



**510 ML** **NO.6057**  
STAINLESS STEEL FOOD CONTAINER  
QUANTITY: 96pcs  
SIZE: 14.1X11.4X6.4cm  
MEAS: 56X33X53cm



**1450 ML** **NO.6059**  
STAINLESS STEEL FOOD CONTAINER  
QUANTITY: 48pcs  
SIZE: 19.1X16.1X7.9cm  
MEAS: 63.5X37.5X49cm



**1100 ML** **NO.6024**  
STAINLESS STEEL LUNCH BOX  
QUANTITY: 36pcs  
SIZE: 17X16.4X8.1cm  
MEAS: 49.5X33X50cm



**880 ML** **NO.6058**  
STAINLESS STEEL FOOD CONTAINER  
QUANTITY: 60pcs  
SIZE: 16.6X13.6X7.1cm  
MEAS: 53.5X49X37cm



**3 SETS** **NO.6061**  
NO.6057+6058+6059  
QUANTITY: 20pcs  
SIZE: 19.1X16.1X7.9cm  
MEAS: 39.2X33.2X42cm



SUS304  
STAINLESS STEEL

## PORTABLE TABLEWARE



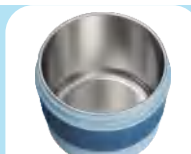
**2 SETS** **NO.6094**  
STRAW PORTABLE  
STAINLESS STEEL TABLEWARE SET  
QUANTITY: 60pcs  
SIZE: 20.6X6.4X4.1cm  
MEAS: 42.5X33X27cm



**3 SETS** **NO.6099**  
STAINLESS STEEL SPOON  
FORK AND CHOPSTICKS SET  
QUANTITY: 72pcs  
SIZE: 11.5X4.9X3.4cm  
MEAS: 34.5X25X26cm



# STAINLESS STEEL LUNCH BOX



SUS304  
STAINLESS STEEL



**450 ML** **NO.6030**  
SOUP BOWL

QUANTITY: 60pcs  
SIZE: 11.2X10.6X9.7cm  
MEAS: 54X34.5X41cm



**1650 ML** **NO.6021**  
STAINLESS STEEL LUNCH BOX

QUANTITY: 24pcs  
SIZE: 19.5X14.4X10cm  
MEAS: 58X29X42cm



STAINLESS STEEL  
LUNCH BOX



SUS304  
STAINLESS STEEL



**480 ML** **NO.6031**  
STAINLESS STEEL LUNCH BOX

QUANTITY: 60pcs  
SIZE: 10.7X10.7X9.4cm  
MEAS: 44X33.5X48.5cm

# STAINLESS STEEL LUNCH BOX



ROTATING LOCKING  
DESIGN



SUS304  
STAINLESS STEEL



**650 ML** **NO.6085**  
STAINLESS STEEL LUNCH BOX

QUANTITY: 54pcs  
SIZE: 17.7X14X6.7cm  
MEAS: 54X43X42.5cm



**1300 ML** **NO.6086**  
STAINLESS STEEL LUNCH BOX

QUANTITY: 24pcs  
SIZE: 17.7X14X14.1cm  
MEAS: 43X36.5X58.5cm



**1950 ML** **NO.6087**  
STAINLESS STEEL LUNCH BOX

QUANTITY: 18pcs  
SIZE: 17.7X14X21.5cm  
MEAS: 54X43X45.5cm





**SUS304  
STAINLESS STEEL**



**1000 ML NO.6047**  
**STAINLESS STEEL LUNCH BOX**  
QUANTITY: 24pcs  
SIZE: 20.1X5.3X25.3cm  
MEAS: 51.5X41.5X34cm



**1500 ML NO.6048**  
**STAINLESS STEEL LUNCH BOX**  
QUANTITY: 16pcs  
SIZE: 23.7X5.3X30cm  
MEAS: 48.5X31X45cm



**1000 ML NO.6049**  
**STAINLESS STEEL LUNCH BOX**  
QUANTITY: 30pcs  
SIZE: 21X16.8X5.4cm  
MEAS: 51.5X22X56cm



**WITH 3  
STAINLESS STEEL  
BOWLS**



**BOWL  
WITH HANDLE  
ANTI-SCALD**



**DOUBLE-SIDES  
LOCKING  
BUCKLES**



**HANDLE  
DESIGN**



**1800 ML NO.6046**  
**STAINLESS STEEL LUNCH BOX**  
QUANTITY: 12pcs  
SIZE: 19X17.2X24cm  
MEAS: 52.5X39X50cm



# BENTO BOX



INDIVIDUAL SEALING



1100 ML

**NO.6204**

BENTO BOX

QUANTITY: 48pcs  
SIZE: 22.9X16.4X6cm  
MEAS: 50.5X47X48.5cm



1600 ML

**NO.6205**

BENTO BOX

QUANTITY: 48pcs  
SIZE: 22.9X16.4X7.5cm  
MEAS: 50.5X47X60.5cm



1700 ML

**NO.6206**

BENTO BOX

QUANTITY: 36pcs  
SIZE: 25.3X18.3X7cm  
MEAS: 56X51X42.5cm



2300 ML

**NO.6207**

BENTO BOX

QUANTITY: 36pcs  
SIZE: 25.3X18.3X8.5cm  
MEAS: 55.5X51X52cm



1000 ML

**NO.6208**

BENTO BOX

QUANTITY: 48pcs  
SIZE: 22.8X16.4X5.4cm  
MEAS: 50.5X46.5X44.5cm



1300 ML

**NO.6209**

BENTO BOX

QUANTITY: 48pcs  
SIZE: 22.8X16.4X6.8cm  
MEAS: 50.5X46.5X 55.5cm

# LUNCH BOX



INDIVIDUAL SEALING,  
AVOIDING FOOD MIXING



1100 ML

**NO.6248**

LUNCH BOX

QUANTITY: 60pcs  
SIZE: 22.6X16.1X5.6cm  
MEAS: 67X32X57.5cm

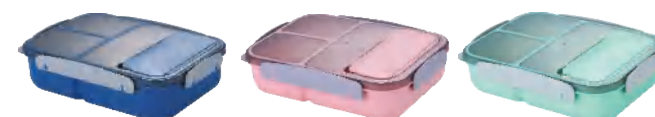


1600 ML

**NO.6249**

LUNCH BOX

QUANTITY: 48pcs  
SIZE: 22.6X16.1X7cm  
MEAS: 67X32X57.5cm



1700 ML

**NO.6250**

LUNCH BOX

QUANTITY: 36pcs  
SIZE: 25X18X6.6cm  
MEAS: 50X36X61cm



2300 ML

**NO.6251**

LUNCH BOX

QUANTITY: 36pcs  
SIZE: 25X18X8.1cm  
MEAS: 53.5X50X50cm



1000 ML

**NO.6252**

LUNCH BOX

QUANTITY: 48pcs  
SIZE: 22.6X16.1X5.1cm  
MEAS: 68.5X33X42.5cm



1300 ML

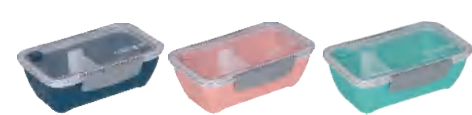
**NO.6253**

LUNCH BOX

QUANTITY: 48pcs  
SIZE: 22.6X16.1X6.5cm  
MEAS: 67X32X53.5cm



# TWO LAYERS STACKABLE PLASTIC LUNCH BOX



600 ML

**NO.6235**  
PLASTIC LUNCH BOX

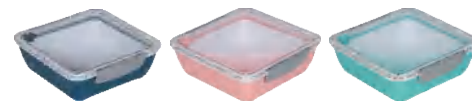
QUANTITY: 72pcs  
SIZE: 19.2X12X6.3cm  
MEAS: 55X43.5X39.5cm



1200 ML

**NO.6236**  
LUNCH BOX

QUANTITY: 60pcs  
SIZE: 19.2X12X7cm  
MEAS: 57X48.5X37.5cm



1200 ML

**NO.6237**  
PLASTIC LUNCH BOX

QUANTITY: 48pcs  
SIZE: 19.4X18.7X6.3cm  
MEAS: 53X38X52.5cm



1750 ML

**NO.6241**  
PLASTIC LUNCH BOX

QUANTITY: 36pcs  
SIZE: 19.4X18.7X8.5cm  
MEAS: 56X36.5X53.5cm



1250 ML

**NO.6217**  
PLASTIC LUNCH BOX

QUANTITY: 54pcs  
SIZE: 21.5X15.6X7.4cm  
MEAS: 64.5X46.5X44.5cm



880 ML

**NO.6216**  
PLASTIC LUNCH BOX

QUANTITY: 72pcs  
SIZE: 18.7X13.8X6.9cm  
MEAS: 56.5X41.5X55cm

# LUNCH BOX



1100 ML

**NO.6290**  
LUNCH BOX

QUANTITY: 42pcs  
SIZE: 20.7X16.5X7.4cm  
MEAS: 50.5X42.5X54cm



1700 ML

**NO.6291**  
LUNCH BOX

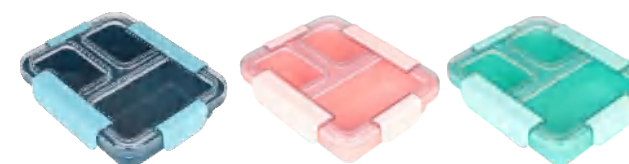
QUANTITY: 32pcs  
SIZE: 20.8X16.6X9.1cm  
MEAS: 42.5X34.5X38.5cm



1000 ML

**NO.6349**  
LUNCH BOX

QUANTITY: 36pcs  
SIZE: 21X16.8X5.4cm  
MEAS: 51.5X43X35cm



1300 ML

**NO.6347**  
LUNCH BOX

QUANTITY: 32pcs  
SIZE: 25.1X20X6.2cm  
MEAS: 51.5X41X52cm



# AIRTIGHT FOOD JAR



**TRANSPARENT  
AS BODY**



**DOUBLE LOCKING  
BUCKLE DESIGN**



**SILICONE SEALED  
RING. LEAKPROOF**



**STACKABLE  
GROOVE DESIGN**



**230  
ML** **NO.6509**  
AIRTIGHT FOOD JAR  
QUANTITY: 128pcs  
SIZE: 10.5X8.6X6.4cm  
MEAS: 42X33.5X53cm



**390  
ML** **NO.6510**  
AIRTIGHT FOOD JAR  
QUANTITY: 96pcs  
SIZE: 10.5X8.6X9.5cm  
MEAS: 40X33.5X58.5cm



**850  
ML** **N.6511**  
AIRTIGHT FOOD JAR  
QUANTITY: 72pcs  
SIZE: 10.5X8.6X18.9cm  
MEAS: 49X39X58.5cm

# AIRTIGHT FOOD JAR



YOU CAN POP IT  
OPEN WITH A SLIGHT LIFT



**300  
ML** **NO.6564**  
AIRTIGHT FOOD JAR  
QUANTITY: 120pcs  
SIZE: 10.6X9.6X6.5cm  
MEAS: 47X31.5X54cm



**500  
ML** **NO.6565**  
AIRTIGHT FOOD JAR  
QUANTITY: 100pcs  
SIZE: 10.6X9.6X9.7cm  
MEAS: 47X41.5X50cm



**700  
ML** **NO.6566**  
AIRTIGHT FOOD JAR  
QUANTITY: 75pcs  
SIZE: 10.6X9.6X12.7cm  
MEAS: 51.5X47X40cm



**660  
ML** **NO.6561**  
AIRTIGHT FOOD JAR  
QUANTITY: 100pcs  
SIZE: 13.2X12.1X7.9cm  
MEAS: 61X51X42cm



**1100  
ML** **NO.6562**  
AIRTIGHT FOOD JAR  
QUANTITY: 80pcs  
SIZE: 13.2X12.1X11.8cm  
MEAS: 61X51X48.5cm



**1500  
ML** **NO.6563**  
AIRTIGHT FOOD JAR  
QUANTITY: 60pcs  
SIZE: 13.2X12.1X15.6cm  
MEAS: 61X51X48.5cm



# LUNCH BOX



900  
ML

**NO.6211**

LUNCH BOX

QUANTITY: 48pcs  
SIZE: 18.6X11.5X7cm  
MEAS: 48X38.5X44cm



860  
ML

**NO.6212**

LUNCH BOX

QUANTITY: 48pcs  
SIZE: 18.6X11.5X7cm  
MEAS: 48X38.5X44cm

# SALAD BOX



2000  
ML

**NO.6224**

SALAD BOX

QUANTITY: 48pcs  
SIZE: 22X16X6.1cm  
MEAS: 48.5X44.5X49cm



1450  
ML

**NO.6223**

SALAD BOX

QUANTITY: 64pcs  
SIZE: 16X16X6.1cm  
MEAS: 64X32.5X49cm

# SPORTS BOTTLE



600  
ML

**NO.6704**

SPORTS BOTTLE

QUANTITY: 105pcs  
SIZE: 9.1X9.1X15.9cm  
MEAS: 59.5X43.5X49.5cm



850  
ML

**NO.6705**

SPORTS BOTTLE

QUANTITY: 60pcs  
SIZE: 9.1X9.1X22cm  
MEAS: 51.5X43.5X45.5cm



770  
ML

**NO.6728**

SPORTS BOTTLE

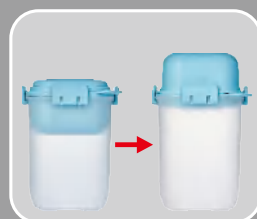
QUANTITY: 60pcs  
SIZE: 9.8X9.8X22.8cm  
MEAS: 59X49X47cm



# GLACIER SALAD CUP



DOUBLE LAYERS  
DESIGN



FLIP FUNCTION



FOUR-SIDES LOCKING  
BUCKLE DESIGN



WITH REUSABLE  
ICE PACK



700  
ML

## NO.6733 GLACIER SALAD CUP

QUANTITY: 80pcs  
SIZE: 8.7X8.7X14cm  
MEAS: 42.5X34X58.5cm



580  
ML

## NO.6734 GLACIER SALAD CUP

QUANTITY: 100pcs  
SIZE: 8.7X8.7X11.5cm  
MEAS: 42X34X60cm

# GLACIER SALAD CUP



ROTATING  
LOCKING



HANDLE  
DESIGN



INTERNAL  
FILTER



WITH REUSABLE  
ICE PACK



650  
ML

## NO.6737 SALAD CUP

QUANTITY: 60pcs  
SIZE: 10X10X12.5cm  
MEAS: 53.5X44.5X46cm



850  
ML

## NO.6738 SALAD CUP

QUANTITY: 40pcs  
SIZE: 10X10X17.7cm  
MEAS: 53.5X44.5X40.5cm