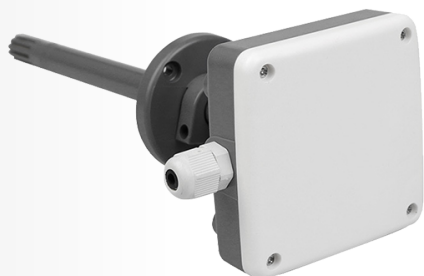


Duct-type temperature and humidity transmitter



Introduction and Description

Integrated sensor and signal converter design. Using dedicated temperature compensation circuits and linearization processing circuits. Reliable sensor performance, long service life, fast response speed.

Applications:

Suitable for temperature and humidity measurement in communication rooms, offices, factories, mines, workshops, warehouses, hospitals, archives, museums, HVAC, building automation and other environments

Features:

- 1 Good appearance, easy installation;
- 2 Accurate measurement, stable output
- 3 Full range humidity temperature compensation;
- 4 Wide range working voltage
- 5 MCU intelligent processing, high anti-interference design

Technical Parameters

Power supply	Current output(4-20mA three-wire) Network output (RS485)	DC24V (15V~36VDC) DC24V (12V~36VDC)
Range	Temperature Humidity	-40 ~100°C range can be customized 0~100%RH
Accuracy	Temperature Humidity	±0.5°C (0-50°C) ±2%RH、±3%RH、±5%RH
Working environment	Temperature Humidity	-20 ~85°C 10—95%RH
Load capacity	Current output type RS485	≤ 500Ω ≤ 1000M
Response time	≤ 15s (Wind speed 1m/s)	
Long term stability	Temperature Humidity	≤ 0.1°C / Year ≤ 1%RH/ Year
Installation method	Air Duct Type	movable flange fixed
External insertion depth	197mm	