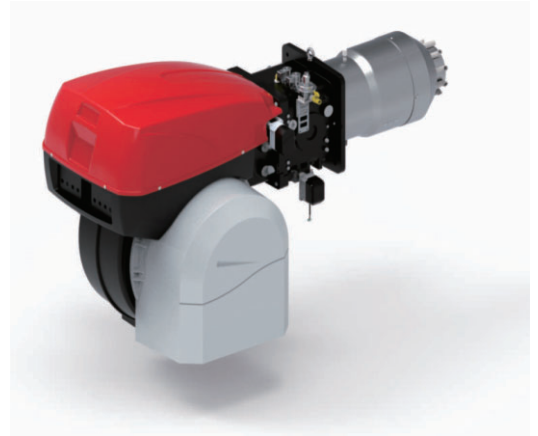


# WS 810-1200/M BLU

## Characteristics

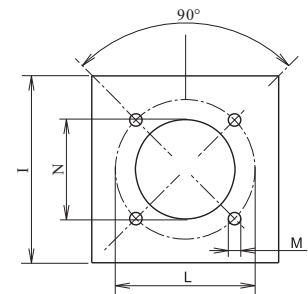
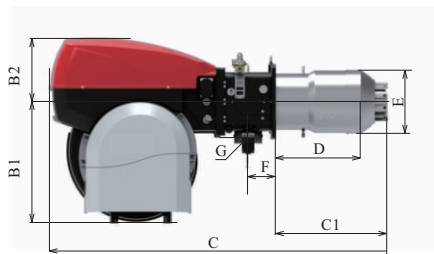
- Modulating operation.
- Complies with EU standard EN676 Class 3, NOx emissions <80mg/kWh.
- Different control system for option.



Power kW	Model	Article No.	Powe supply	Motor power kW	Package size LxPxH(mm)	Weight kg
1200/3500~8000	WS 810/M BLU	101 005 005	230V 50Hz	22	1820x1120x880	250
1100/4000~10100	WS 1000/M BLU	101 005 006	230V 50Hz	22	1820x1120x880	250
1500/5500~11100	WS 1200/M BLU	101 005 007	230V 50Hz	25	1820x1120x880	250

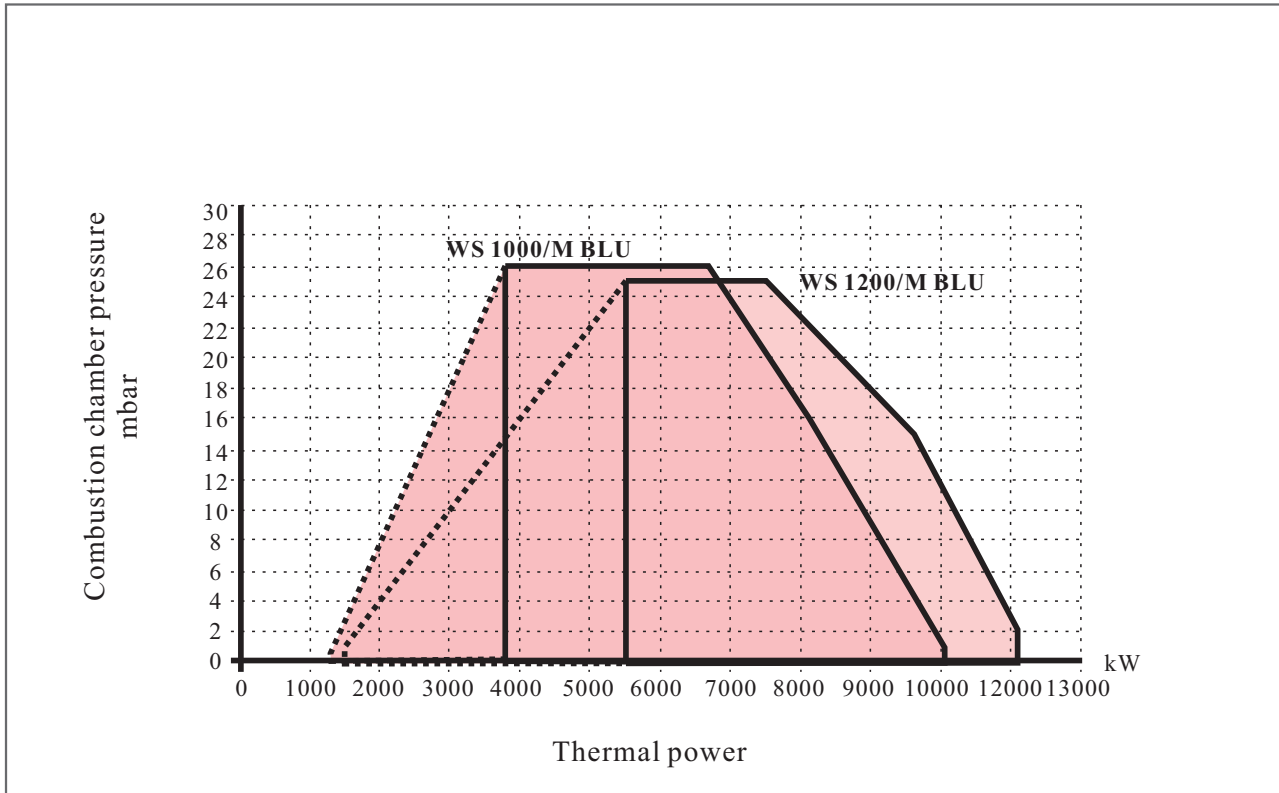
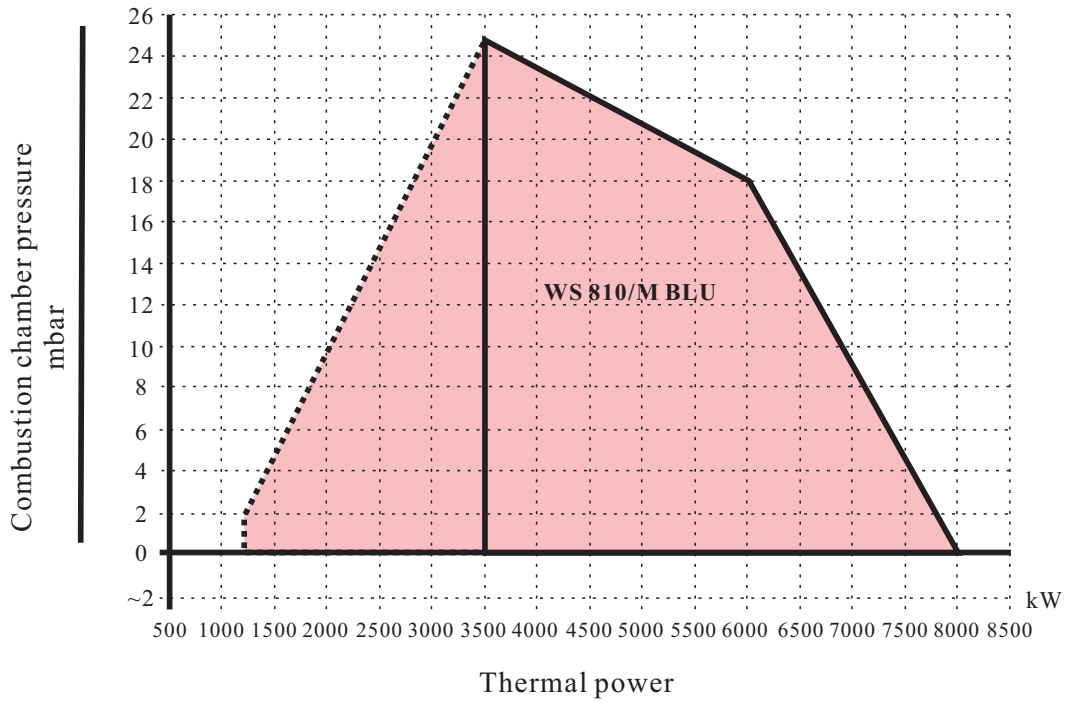
\*60 Hz can be cuscomized

## Size



Model	A1	A2	B1	B2	C	C1	E	F	G	I	L	M	N
	mm	mm	mm	mm	mm	mm	Φmm	mm	mm	mm	Φmm	M	Φmm
WS 810/M BLU	643	644	575	303	1935	574~750	363	181	DN80	500	495	4*M18	380
WS 1000/M BLU	774	975	875	463	2296~2446	657~807	413	200	DN80	548	608	4*M20	420
WS 1200/M BLU	774	975	875	463	2296~2446	657~807	456	200	DN80	548	608	4*M20	470

**Firing Rates**



— Useful firing rates for choosing the burner

- - - Modulation range

Test condition conforming to en676

Temperature: 20°C

Pressure: 1013.5

Mbar altitude: 0 m a.s.l